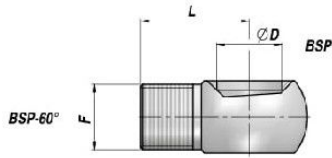


**RV454**

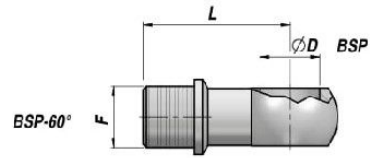
**BANJO FILETE  
THREADED BANJO**



Code Code	ØD BSP	F BSP	L	kg x 100
RV454.0303 <b>NEW!</b>	1/8"	1/8"	24~	2,00
RV454.0404	1/4"	1/4"	25~	2,91
RV454.0604 <b>NEW!</b>	3/8"	1/4"	25~	3,67
RV454.0606	3/8"	3/8"	28~	3,93
RV454.0804 <b>NEW!</b>	1/2"	1/4"	25~	6,50
RV454.0806	1/2"	3/8"	28~	7,00
RV454.0808	1/2"	1/2"	32~	7,60
RV454.1208	3/4"	1/2"	32~	14,40
RV454.1212	3/4"	3/4"	40~	16,80
RV454.1612 <b>NEW!</b>	1"	3/4"	45~	24,21
RV454.1616	1"	1"	44~	31,40

**RV451**

**BANJO FILETE AVEC ARRET  
THREADED BANJO WITH COLLAR**

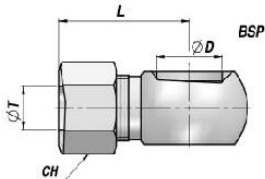


Code Code	ØD BSP	F BSP	L	kg x 100
RV451.0404	1/4"	1/4"	30~	3,60
RV451.0604	3/8"	1/4"	40~	5,40
RV451.0606	3/8"	3/8"	40~	6,50
RV451.0806	1/2"	3/8"	45~	10,10
RV451.0808	1/2"	1/2"	55~	11,60
RV451.1212	3/4"	3/4"	55~	21,60

MATERIEL : ACIER ( SUR DEMANDE : ACIER INOX AISI 316 ) - MATERIAL : STEEL ( ON REQUEST : STAINLESS STEEL AISI 316 )

**RV536**

**BANJO + ECROU ET BAGUE  
BANJO + NUT AND CUTTING RING**

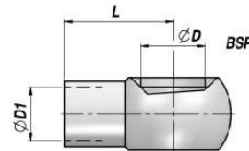


DIN 2353

Code Code	ØD BSP	ØT	L	CH	kg x 100
RV536.0412	1/4"	12	43,5	22	7,00
RV536.0612	3/8"	12	38,5	22	7,00
RV536.0815	1/2"	15	44,5	27	14,00

**RV531**

**BANJO A SOUDER  
WELDABLE BANJO**

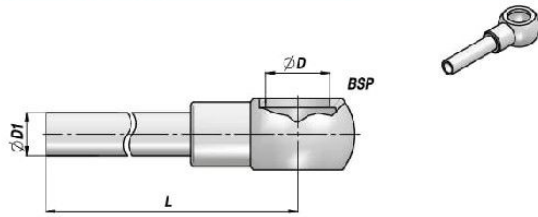


Code Code	ØD BSP	ØD1	L	kg x 100
RV531.0300 <b>NEW!</b>	1/8"	6	19~	1,00
RV531.0408 <b>NEW!</b>	1/4"	8	24~	2,77
RV531.0400	1/4"	10	24~	2,87
RV531.0412 <b>NEW!</b>	1/4"	12	24~	2,80
RV531.0610	3/8"	10	28~	4,36
RV531.0600	3/8"	12	28~	3,81
RV531.0614 <b>NEW!</b>	3/8"	14	28~	3,80
RV531.0812 <b>NEW!</b>	1/2"	12	32~	7,60
RV531.0814	1/2"	14	32~	6,80
RV531.0800	1/2"	15	32~	6,55
RV531.0816 <b>NEW!</b>	1/2"	16	32~	6,27
RV531.1200	3/4"	20	40~	16,87
RV531.1600	1"	25	57~	33,20

MATERIEL : ACIER ( SUR DEMANDE : ACIER INOX AISI 316 ) - MATERIAL : STEEL ( ON REQUEST : STAINLESS STEEL AISI 316 )

BANJO STANDARD  
BANJO WITH WELDED PIPE

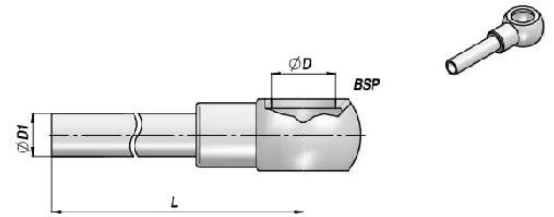
RV535



Code Code	ØD BSP	ØD1	L	kg x 100
RV535.0410	1/4"	10	100	5,50
RV535.0415	1/4"	10	150	7,00
RV535.0420	1/4"	10	200	8,50
RV535.0430	1/4"	10	300	11,50
RV535.0440	1/4"	10	400	14,50
RV535.0460	1/4"	10	600	20,50
RV535.120404	1/4"	12	40	3,60
RV535.120410 <b>NEW!</b>	1/4"	12	100	6,10
RV535.120420	1/4"	12	200	10,70
RV535.120440	1/4"	12	400	18,50
RV535.0603	3/8"	12	40	4,50
RV535.0606	3/8"	12	60	5,50
RV535.0610	3/8"	12	100	7,00

BANJO STANDARD  
BANJO WITH WELDED PIPE

RV535



Code Code	ØD BSP	ØD1	L	kg x 100
RV535.0615	3/8"	12	150	8,50
RV535.0620	3/8"	12	200	11,00
RV535.0630	3/8"	12	300	14,50
RV535.0640	3/8"	12	400	18,50
RV535.0650	3/8"	12	500	22,50
RV535.0660	3/8"	12	600	27,00
RV535.0699	3/8"	12	1000	42,50
RV535.0810	1/2"	15	100	11,50
RV535.0820	1/2"	15	200	16,50
RV535.0830	1/2"	15	300	20,50
RV535.0840	1/2"	15	400	26,50
RV535.0850	1/2"	15	500	32,50
RV535.0899 <b>NEW!</b>	1/2"	15	1000	62,50

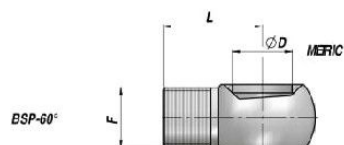
MATERIEL : ACIER ( SUR DEMANDE : ACIER INOX AISI 316 ) - MATERIAL : STEEL ( ON REQUEST : STAINLESS STEEL AISI 316 )

**RV452** BANJO FILETE  
THREADED BANJO



Code Code	ØD BSP	F	L	kg x 100
RV452.0414	1/4"	M14x1.5	25~	2,90
RV452.0614	3/8"	M14x1.5	25~	3,60
RV452.0616	3/8"	M16x1.5	28~	3,90
RV452.0818	1/2"	M18x1.5	30~	7,35
RV452.0822	1/2"	M22x1.5	32~	8,10

**RV452** BANJO FILETE  
THREADED BANJO

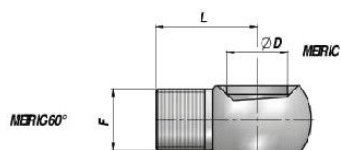


Code Code	ØD	F BSP	L	kg x 100
RV452.1404	14	1/4"	25~	3,00
RV452.1406	14	3/8"	28~	3,70
RV452.1606	16	3/8"	28~	4,00
RV452.1806	18	3/8"	28~	4,70
RV452.1808	18	1/2"	32~	6,00
RV452.2206	22	3/8"	28~	7,50
RV452.2208	22	1/2"	32~	8,00

MATERIEL : ACIER ( SUR DEMANDE : ACIER INOX AISI 316 ) - MATERIAL : STEEL ( ON REQUEST : STAINLESS STEEL AISI 316 )

**RV453**

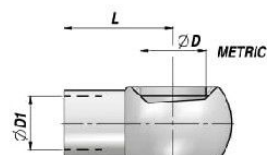
**BANJO FILETE  
THREADED BANJO**



Code Code	ØD	F	L	kg x 100
RV453.1212	12	M12x1,5	20~	2,50
RV453.1414	14	M14x1,5	24~	3,00
RV453.1616	16	M16x1,5	28~	4,20
RV453.1818	18	M18x1,5	32~	6,00
RV453.2020	20	M20x1,5	35~	6,20
RV453.2222	22	M22x1,5	35~	6,40

**RV532**

**BANJO A SOUDER  
WELDABLE BANJO**



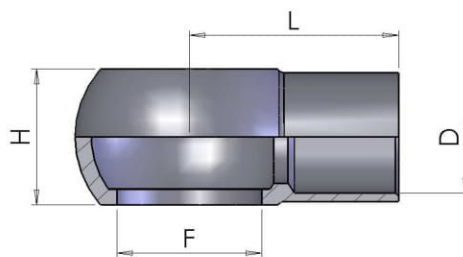
Code Code	ØD	ØD1	L	kg x 100
RV532.1208	12	8	22~	1,75
RV532.1410	14	10	24~	2,00
RV532.1412	14	12	24~	1,90
RV532.1610	16	10	28~	4,00
RV532.1612	16	12	28~	3,54
RV532.1815	18	15	29~	6,00
RV532.2014	20	14	32~	8,53
RV532.2218	22	18	32~	7,50

MATERIEL : ACIER ( SUR DEMANDE : ACIER INOX AISI 316 ) - MATERIAL : STEEL ( ON REQUEST : STAINLESS STEEL AISI 316 )

## Adattatori Miscellanea / Miscellaneous Adaptors

### OL1800 Occhio metrico a saldare

Weldable Metric Banjo Eye

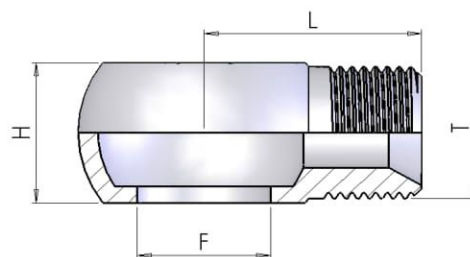


trattamento superficiale: non zincato  
 surface treatment: without zinc plating

part number	Dimensions			
	F	D	L	H
OL1800-01	M8x1	5	15	8
OL1800-02	M10x1	6	17	10
OL1800-03	M12x1,5	8	22	12
OL1800-04	M14x1.5	8	24	14
OL1800-05	M14 x 1.5	10	24	14
OL1800-06	M16x1.5	10	28	18
OL1800-07	M16 x 1.5	12	28	16
OL1800-08	M18 x 1.5	12	29	20
OL1800-09	M18x1.5	14	29	20
OL1800-10	M18 x 1.5	15	29	20
OL1800-11	M20x1.5	12	32	22
OL1800-12	M20x1.5	14	32	22
OL1800-13	M22 x 1.5	16	32	30
OL1800-14	M22x1.5	18	32	22
OL1800-15	M26 x 1.5	20	41	28
OL1800-16	M26x1.5	22	40	29

### OL1950 Occhio filettato metrico

Metric threaded Banjo Eye



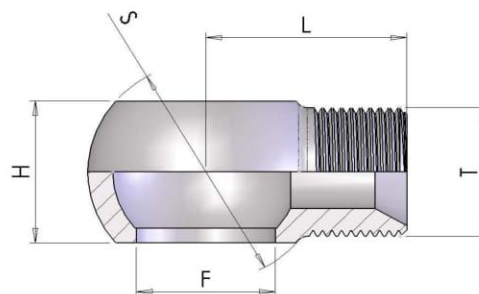
part number	Dimensions			
	F	T	L	H
OL1950-01	M14 x 1.5	M14 x 1.5	24	14
OL1950-02	M18 x 1.5	M18 x 1.5	30	20
OL1950-03	M22 x 1.5	M22 x 1.5	36	22



## Adattatori Miscellanea / Miscellaneous Adaptors

### OL2000 Occhio filettato Gas

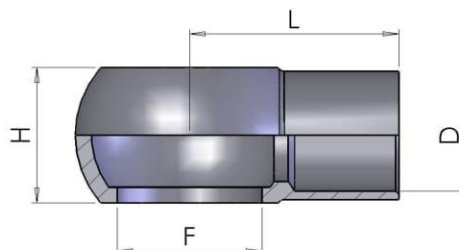
BSP threaded Banjo Eye



part number	Dimensions				
	F	T	L	H	S
OL2000-01	1/4	1/4-19	24	14,5	24
OL2000-02	3/8	1/4-19	26	17,0	28
OL2000-03	3/8	3/8-19	28	17,0	28
OL2000-04	3/8	1/2-14	28	22,0	28
OL2000-05	1/2	3/8-19	30	22,0	36
OL2000-06	1/2	1/2-14	32	22,0	36
OL2000-07	3/4	1/2-14	47	29,0	45
OL2000-08	3/4	3/4-11	38	29,0	45
OL2000-09	1	3/4-11	45	28,0	58
OL2000-10	1	1-11.5	51	38,0	58

### OL1900 Occhio a saldare Gas

Weldable BSP Banjo Eye



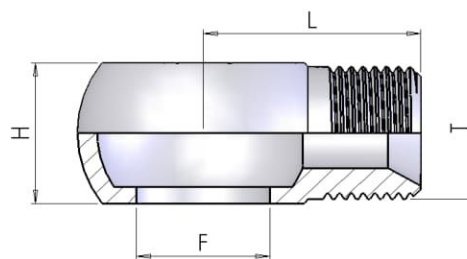
**trattamento superficiale:** non zincato  
**surface treatment:** without zinc plating

part number	Dimensions			
	F	D	L	H
OL1900-01	1/4-13.5	6	23	15,0
OL1900-02	1/4-13.5	8	23	15,0
OL1900-03	1/4-13.5	10	23	15,0
OL1900-04	1/4-13.5	12	24	15,0
OL1900-05	3/8-16.7	10	28	17,0
OL1900-06	3/8-16.7	12	28	17,0
OL1900-07	1/2-21	15	32	22,0
OL1900-08	1/2-21	16	32	22,0
OL1900-09	3/4-26.5	20	41	29,0
OL1900-10	3/4-26.5	22	40	29,0
OL1900-11	1-33.3	27	50	38,0

## Adattatori Miscellanea / Miscellaneous Adaptors

### OL1850 Occhio GAS filettato metrico

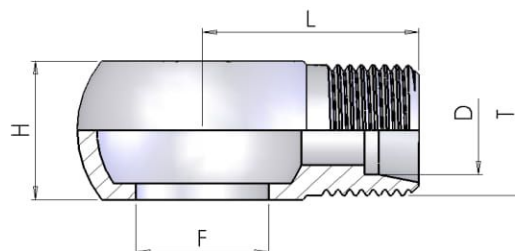
Threaded Banjo Eye



part number	Dimensions			
	F	T	L	H
OL1850-01	1/4	M14 x 1.5	24	14
OL1850-02	3/8	M18 x 1.5	26	18

### OL2050 Occhio filettato cono 24°

Threaded Banjo Eye 24° cone



part number	Dimensions				
	F	T	D	L	H
OL2050-01	3/8	M18 x 1.5	12	26	17
OL2050-02	3/8	M22 x 1.5	15	38	17
OL2050-03	1/2	M18 x 1.5	12	38	22
OL2050-04	1/2	M22 x 1.5	15	38	22