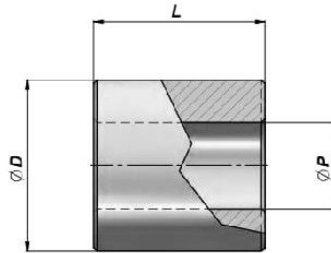


CBX



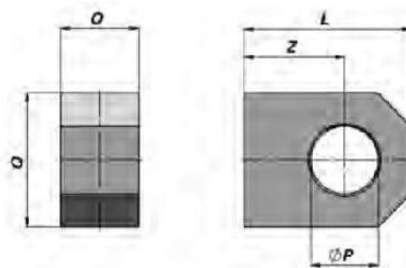
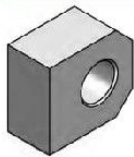
Code Code	ØP	ØD	L	kg
CBX016035030	16.20	35	30	0,18
CBX020040040	20.25	40	40	0,29
CBX025050050	25.25	50	50	0,56
CBX030060060	30.25	60	60	0,97

MATERIEL : AISI 316 INOX

MATERIAL : AISI 316 STAINLESS STEEL

COFX

CHAPE MALE INOX  
STAINLESS STEEL MALE CLEVIS



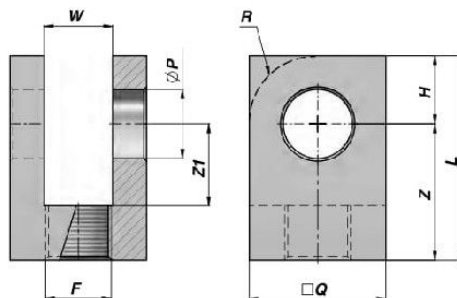
Code Code	ØP	Ø	Q	Z	L	kg
COFX0200000	20.25	25	45	30	50	0,35

MATERIEL : AISI 316 INOX

MATERIAL : AISI 316 STAINLESS STEEL

CFFX

CHAPE FEMELLE TARAUEE INOX  
STAINLESS STEEL THREADED FORK



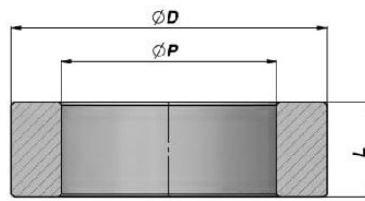
Code Code	ØP	L	Z	Z1	H	Q	W	F	kg
CFFX0161615	16.20	55	39	24	16	35	16	M16x1.5	0,30
CFFX0202015	20.25	65	45	30	20	40	20	M20x1.5	0,40
CFFX0252420	25.25	75	50	30	25	50	25	M24x2	0,75

MATERIEL : AISI 316 INOX

MATERIAL : AISI 316 STAINLESS STEEL

BAGUE A SOUDER INOX POUR ROTULE "GE TGR"  
STAINLESS STEEL WELD-RING FOR "GE TGR" BALL-JOINT

CAGEX



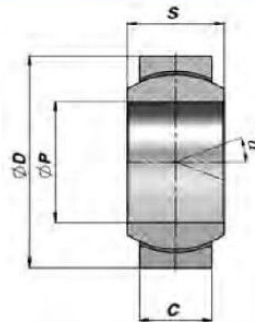
Code Code	Per For	ØD	L	ØP	kg
CAGEX050035	GE ø20	50	14	35	0,11
CAGEX069042	GE ø25	69	19	42	0,35
CAGEX075047	GE ø30	75	20	47	0,41
CAGEX094062	GE ø40	94	26	62	0,79

MATERIEL : AISI 316 INOX

MATERIAL : AISI 316 STAINLESS STEEL

ROTULE RADIALE SANS ENTRETIEN  
MAINTENANCE FREE RADIAL BALL-JOINT

GE TGR



Code Code	ØP	ØD	S	C	α	FC	kg
CGE0003603	20	35	16	12	9	41.5	0,06
CGE0003604	25	42	20	16	7	68.0	0,12
CGE0003605	30	47	22	18	6	88.0	0,16
CGE0003607	40	62	28	22	7	140.0	0,32

FC = CHARGE DYN. MAXI - MAX DYNAMIC LOAD

ACCOUPLLEMENT - COUPLING : ACIER/PTFE - STEEL/PTFE

MATERIEL : INOX AISI420

- ISO 12240-1 SERIE G

MATERIAL : STAINLESS STEEL AISI420

- ISO 12240-1 SERIE G