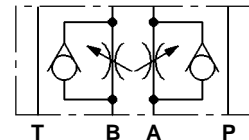


# LC1M VF

## Valvole modulari di controllo portata *Modular flow regulator valves*



### CARATTERISTICHE TECNICHE

Grandezza: NG6 ISO 4401 - 03 CETOP RP121 H-03 (CETOP 3)

Portata massima: 50 l/min

Pressione massima d'esercizio: 310 bar

### TECHNICAL CHARACTERISTICS

Size: NG6 ISO 4401 - 03 CETOP RP121 H-03 (CETOP 3)

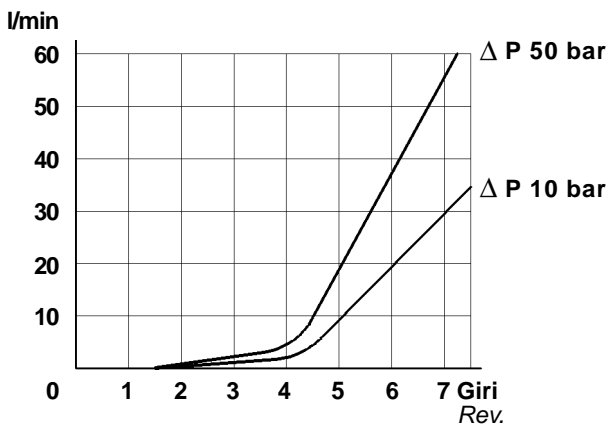
Max flow: 50 l/min

Max operating pressure: 310 bar

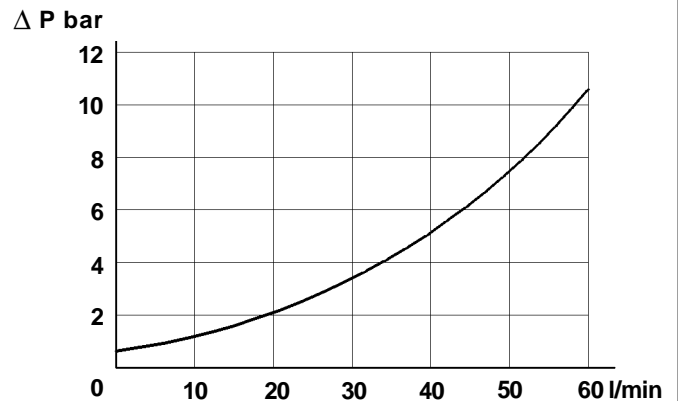
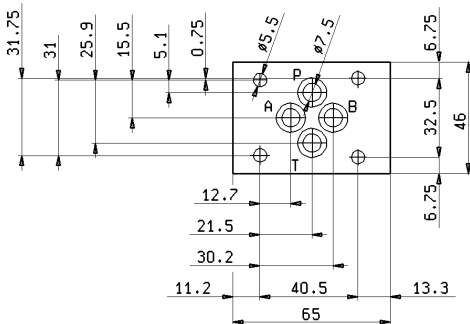
<b>01AB</b>  T B A P	<b>010A</b>  T B A P	<b>010B</b>  T B A P	<b>02AB</b>  T B A P	<b>020A</b>  T B A P
<b>020B</b>  T B A P	<b>0B0A</b>  T B A P	<b>0B0B</b>  T B A P	<b>0B0P</b>  T B A P	<p>V = 01 Regolazione in ritorno <i>Meter-Out flow</i></p> <p>V = 02 Regolazione in mandata <i>Meter-In flow</i></p> <p>V = 0B Bidirezionale <i>Bidirectional</i></p>

**CARATTERISTICHE TECNICHE • TECHNICAL FEATURES**

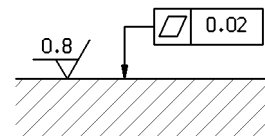
**Variazione di portata in funzione dei giri del volantino e della pressione**  
*Pressure drop depending on knob revolutions and on pressure*



**Caduta di pressione nel senso del flusso libero**  
*Pressure drop in the free flow direction*


**GRANDEZZA • SIZE : NG6 ISO 4401-03 CETOP RP 121 H03 (CETOP 3)**


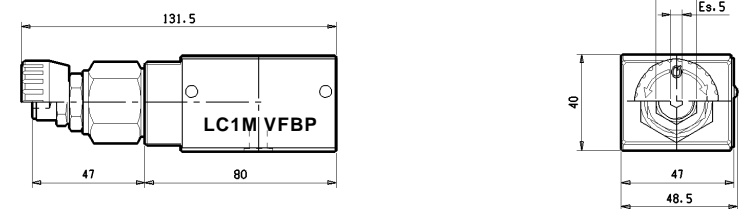
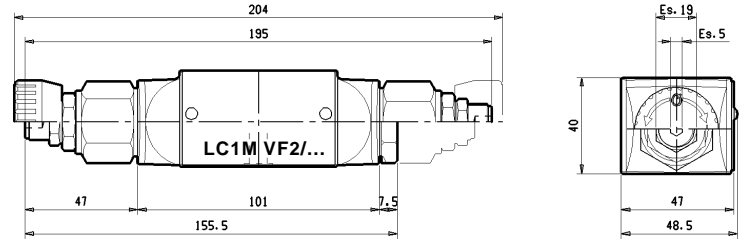
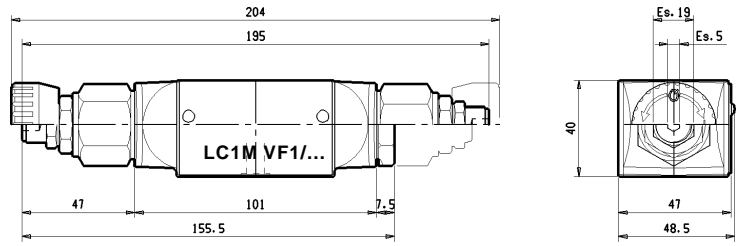
**Qualità superficie di attacco**  
*Mounting plane quality*



**DIMENSIONI DI INGOMBRO • OVER-ALL DIMENSIONS**

**K** = Valvola con regolazione a volantino  
*Knob adjustment*

**S** = Valvola con regolazione a chiave  
*Screw adjustment*



Peso Weight	
LC1M VF1/AB	1,35 kg
LC1M VF2/AB	1,35 kg
LC1M VF1/A-B	1,22 kg
LC1M VF2/A-B	1,22 kg
LC1M VFB/P	1,22 kg

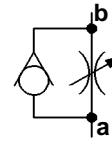
**X VALVOLA A CARTUCCIA • CARTRIDGE VALVE**

**S** = Valvola con regolazione a chiave  
*Screw adjustment*

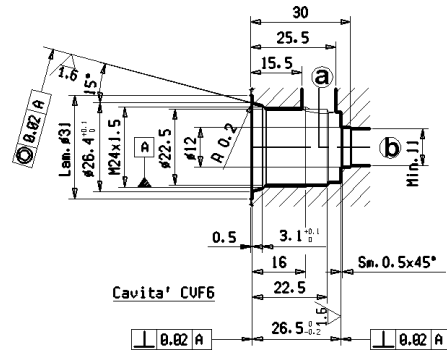
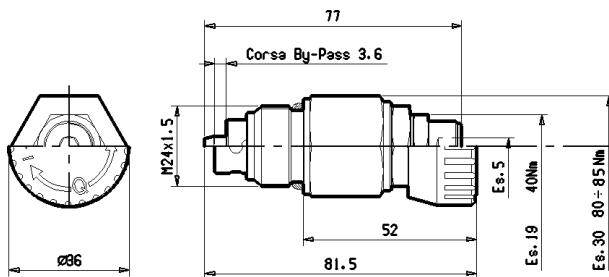
**K** = Valvola con regolazione a volantino  
*Knob adjustment*

**CVF6**

Valvola unidirezionale  
*Uni-directional valve*



Valvola bidirezionale  
*Bi-directional valve*



Tipo Type	Regolazione a volantino Knob adjustment	Regolazione a vite Screw adjustment	Portata Max. Max. flow l/min	Diametro nominale di passaggio Ø Size mm	Numero di giri del volantino Knob revolutions number n°	Cavità Cavity n°	Peso Weight kg
CVF6	<b>2K</b>	<b>2S</b>	50	6.5	7,5	14	0,130

**CODICE DI ORDINAZIONE • ORDERING CODE**

**L 6 1 5 1 V W X 0 0 Z**

<b>V</b>	MODELLO MODEL
<b>01</b>	MODELLO 01 MODEL 01
<b>02</b>	MODELLO 02 MODEL 02
<b>0B</b>	MODELLO 0B MODEL 0B

<b>W</b>	TIPI DI VALVOLE VALVES TYPE
<b>AB</b>	LC1M-VF_/AB
<b>0A</b>	LC1M-VF_/A
<b>0B</b>	LC1M-VF_/B
<b>0P</b>	LC1M-VF_/P

<b>X</b>	REGOLAZIONE ADJUSTMENT
--	VEDI SOPRA SEE ABOVE

<b>Z</b>	VERSIONE VERSION
<b>00</b>	STANDARD STANDARD
<b>0V</b>	GUARNIZIONI IN VITON SEALS IN VITON