

LC1M VR

Valvole modulari di ritegno semplici e pilotate

Modular direct and pilot operated check valves



CARATTERISTICHE TECNICHE

Grandezza: NG6 ISO 4401 - 03 CETOP RP121 H-03 (CETOP 3)

Portata massima: 60 l/min

Pressione massima d'esercizio: 310 bar

Rapporto di pilotaggio: 4:1

TECHNICAL CHARACTERISTICS

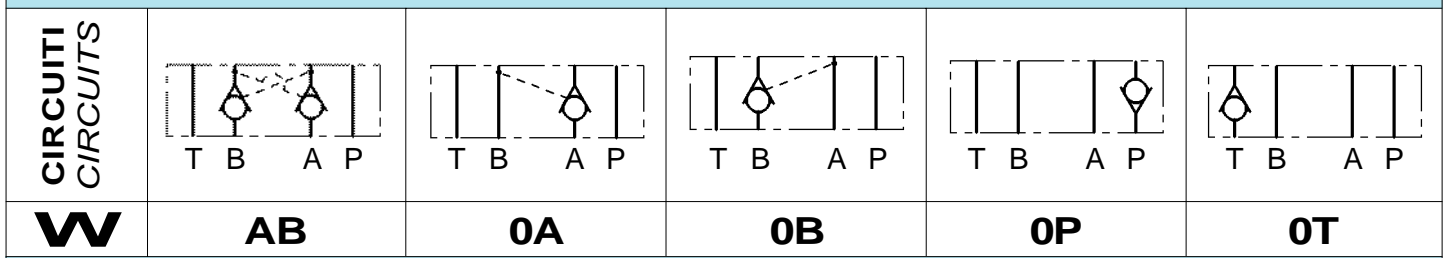
Size: NG6 ISO 4401 - 03 CETOP RP121 H-03 (CETOP 3)

Max flow: 60 l/min

Max operating pressure: 310 bar

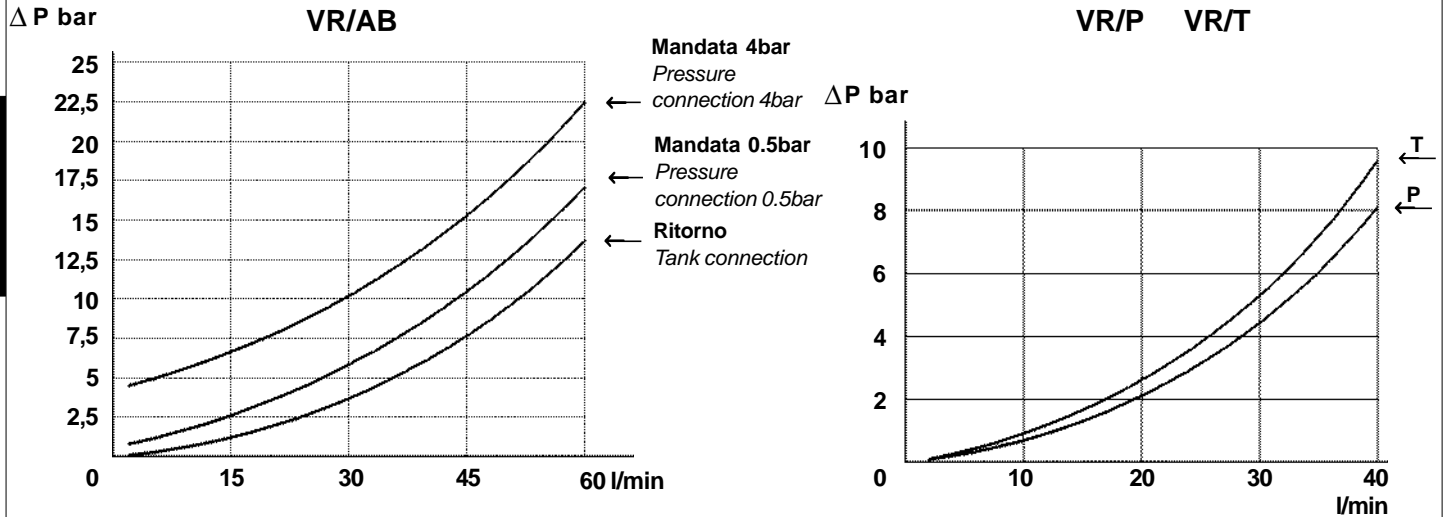
Pilot ratio: 4:1

TIPI DI VALVOLE • VALVES TYPES

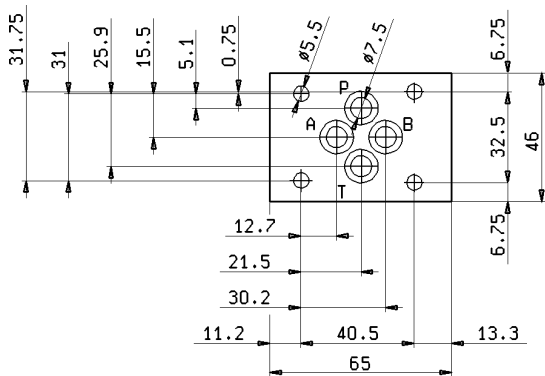


CARATTERISTICHE TECNICHE • TECHNICAL FEATURES

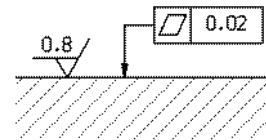
Cadute di pressione
Pressure drop diagrams



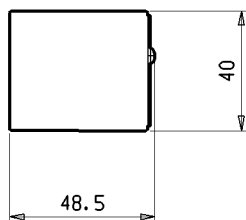
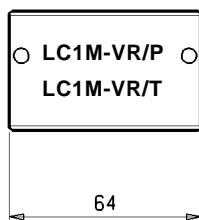
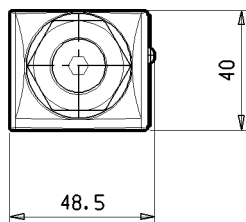
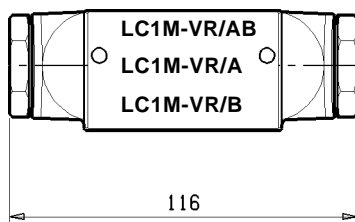
GRANDEZZA • SIZE : NG6 ISO 4401-03 CETOP RP 121 H03 (CETOP 3)



Qualità superficie di attacco
Mounting plane quality

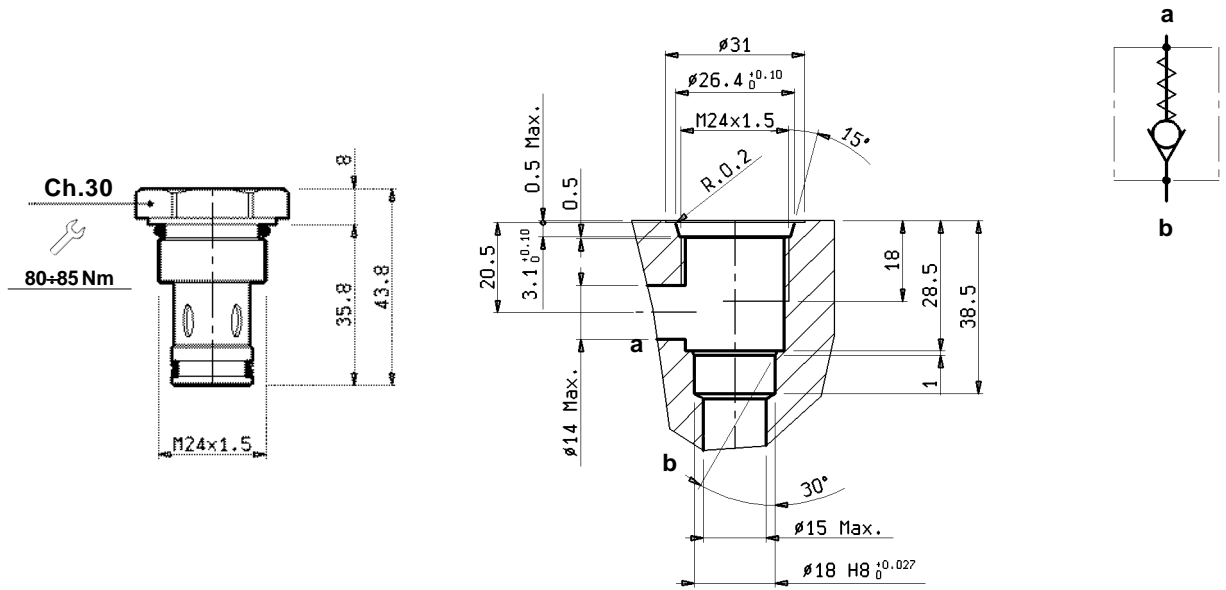


DIMENSIONI DI INGOMBRO • OVER-ALL DIMENSIONS



Peso Weight	
LC1M-VR/AB	1.07 kg
LC1M-VR/A	1.06 kg
LC1M-VR/B	1.06 kg
LC1M-VR/P	0.75 kg
LC1M-VR/T	0.75 kg

VALVOLA UNIDIREZIONALE A CARTUCCIA • UNI-DIRECTIONAL CARTRIDGE VALVE



Tipo <i>Type</i>	Diam. nominale di passaggio <i>Ø Size</i> mm	Portata Max. <i>Max. flow</i> l/min	Pressione Max. <i>Max. pressure</i> bar	Pressione di apertura <i>Cracking pressure</i> bar	Cavità <i>Cavity</i> n°	Peso <i>Weight</i> kg
VU 6	8	60	350	0,5	15	0,110
VU 6/4	8	60	350	4	15	0,110

CARATTERISTICHE TECNICHE • TECHNICAL FEATURES

Diagramma caduta di pressione della cartuccia

Cartridge pressure drop diagram

