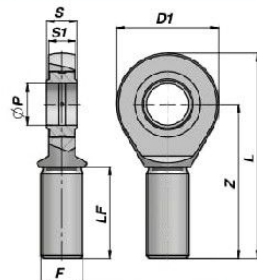


**TABLEAU COMPARATIF ROTULES "GE"  
CROSS REFERENCE SPHERICAL PLAIN BEARINGS**

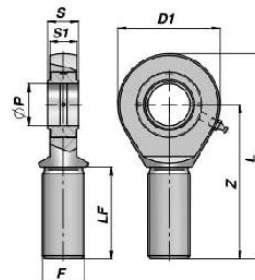
CONTARINI	SKF	INA	International Reference
CSTS ... C	SC ... ES	GK ... DO	-
CSTS ... N	SCF ... EF	GF ... DO	-
CSTSCE ... N	-	-	-
CSTAPR ... CE	SIQG ... ES	GIHNRK ... LO	-
CSTAPR ... U	SIR ... ES	GIHRK ... DO	-
CSTAPR ... N	-	-	-
CSTAPR ... UGAS	-	-	-
CSTAPR ... S	SIJ ... ES	-	-
CSTFE ... DO / ... DO2RS	SI ... E (6÷12) - SI ... ES (15÷30) - SIA ... ES-2RS (35÷80)	GAR ... DO / GAR ... DO-2RS	-
CSTFI ... DO / ... DO2RS	SA ... E (6÷12) - SA ... ES (15÷30) - SAA ... ES-2RS (35÷80)	GIR ... DO / GIR ... DO-2RS	-
CSTFE ... UK / ... UK2RS	SA ... C - SAA ... TXE-2LS	GAR ... UK / GAR ... UK-2RS	-
CSTFI ... UK / ... UK2RS	SI ... C - SIA ... TXE-2LS	GIR ... UK / GIR ... UK-2RS	-
CSTFE ... PB	SAKAC ... M	GAKR ... PB	-
CSTFI ... PB	SIKAC ... M	GIKR ... PB	-
CSTFE ... PW	SAKB ... F	GAKR ... PW	-
CSTFI ... PW	SIKB ... F	GIKR ... PW	-

EMBOUT A ROTULE  
BALL-JOINT END WITH GREASE NIPPLE

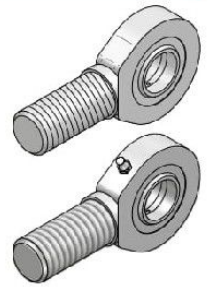
CSTFE...DO



TFE 6-20 DO/DO2RS



TFE 25-80 DO/DO2RS



Code Code Type DO	Code Code Type DO...2RS	ØP	Z	S	D1	S1	L	F	LF min	FC (kN)	kg
*CSTFE906DO		6	36	6	21	4.3	46.5	M6x1	18	3.4	0,01
*CSTFE908DO		8	42	8	24	6.0	54.0	M8x1.25	22	5.5	0,03
*CSTFE910DO		10	48	9	29	7.0	62.5	M10x1.5	27	8.1	0,05
*CSTFE912DO		12	54	10	34	8.0	71.0	M12x1.75	30	10.8	0,08
**CSTFE915DO		15	63	12	40	10.0	83.0	M14x2	34	17.0	0,14
**CSTFE917DO	**CSTFE917D2	17	69	14	46	11.0	92.0	M16x2	36	21.2	0,19
**CSTFE920DO	**CSTFE920D2	20	78	16	53	13.0	104.5	M20x1.5	43	30.0	0,31
CSTFE925DO	CSTFE925D2	25	94	20	64	17.0	126.0	M24x2	53	48.0	0,56
CSTFE930DO	CSTFE930D2	30	110	22	73	19.0	146.5	M30x2	65	62.0	0,89
CSTFE935DO	CSTFE935D2	35	140	25	82	21.0	181.0	M36x3	82	80.0	1,40
CSTFE940DO	CSTFE940D2	40	150	28	92	23.0	196.0	M39x3	86	100.0	1,80
CSTFE945DO	CSTFE945D2	45	163	32	102	27.0	218.0	M42x3	94	127.0	2,60
CSTFE950DO	CSTFE950D2	50	185	35	112	30.0	241.0	M45x3	106	156.0	3,40
CSTFE960DO	CSTFE960D2	60	210	44	135	38.0	277.5	M52x3	115	245.0	5,90
CSTFE970DO	CSTFE970D2	70	235	49	160	42.0	315.0	M56x4	125	315.0	8,20
CSTFE980DO	CSTFE980D2	80	270	55	180	47.0	360.0	M64x4	140	400.0	13,10

FC = CHARGE DYN. MAXI - MAX DYNAMIC LOAD

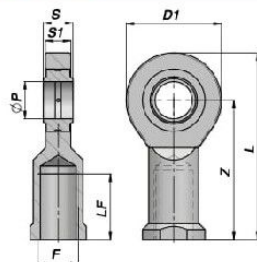
\* = SANS GRAISSEUR - WITHOUT GREASE NIPPLE

\*\* = GRAISSAGE PAR TROU - LUBRICATING HOLE IN THE HEAD

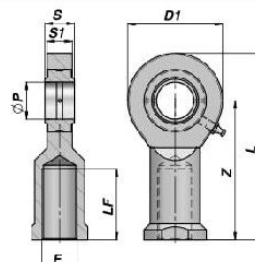
MATERIEL : ACIER ISO 12240-4 SERIE E TYPE M - MATERIAL : STEEL ISO 12240-4 SERIES E TYPE M

EMBOUT A ROTULE  
BALL-JOINT END WITH GREASE NIPPLE

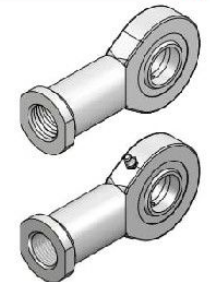
CSTFI...DO



TFI 6-20 DO/DO2RS



TFI 25-80 DO/DO2RS



Code Code Type DO	Code Code Type DO...2RS	ØP	Z	S	D1	S1	L	F	LF min	FC (kN)	kg
*CSTFI806DO		6	30	6	21	4.3	40.5	M6x1	11	3.4	0,02
*CSTFI808DO		8	36	8	24	6.0	48.0	M8x1.25	15	5.5	0,04
*CSTFI810DO		10	43	9	29	7.0	57.5	M10x1.5	20	8.1	0,06
*CSTFI812DO		12	50	10	34	8.0	67.0	M12x1.75	24	10.8	0,09
**CSTFI815DO		15	61	12	40	10.0	81.0	M14x2	30	17.0	0,18
**CSTFI817DO	**CSTFI817D2	17	67	14	46	11.0	90.0	M16x2	34	21.2	0,22
**CSTFI820DO	**CSTFI820D2	20	77	16	53	13.0	103.5	M20x1.5	40	30.0	0,35
CSTFI825DO	CSTFI825D2	25	94	20	64	17.0	126.0	M24x2	48	48.0	0,64
CSTFI830DO	CSTFI830D2	30	110	22	73	19.0	146.5	M30x2	56	62.0	0,93
CSTFI835DO	CSTFI835D2	35	125	25	82	21.0	166.0	M36x3	60	80.0	1,30
CSTFI840DO	CSTFI840D2	40	142	28	92	23.0	188.0	M39x3	67	100.0	2,01
CSTFI845DO	CSTFI845D2	45	145	32	102	27.0	196.0	M42x3	65	127.0	2,50
CSTFI850DO	CSTFI850D2	50	160	35	112	30.0	216.0	M45x3	69	156.0	3,50
CSTFI860DO	CSTFI860D2	60	175	44	135	38.0	242.0	M52x3	73	245.0	5,50
CSTFI870DO	CSTFI870D2	70	200	49	160	42.0	280.0	M56x4	80	315.0	8,60
CSTFI880DO	CSTFI880D2	80	230	55	180	47.0	320.0	M64x4	85	400.0	12,00

FC = CHARGE DYN. MAXI - MAX DYNAMIC LOAD

\* = SANS GRAISSEUR - WITHOUT GREASE NIPPLE

\*\* = GRAISSAGE PAR TROU - LUBRICATING HOLE IN THE HEAD

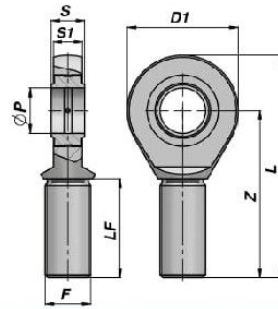
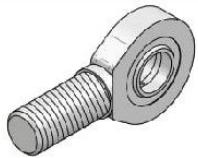
MATERIEL : ACIER ISO 12240-4 SERIE E TYPE F - MATERIAL : STEEL ISO 12240-4 SERIES E TYPE F



**CSTFE..UK**

**NEW!**

**EMBOU A ROTULE SANS LUBRIFICATION  
MAINTENANCE FREE BALL-JOINT**



Code Code Type UK	Code Code Type UK...2RS	ØP	Z	S	D1	S1	L	F	LF min	FC (kN)	kg
CSTF1106UK		6	36	6	21	4.3	46.5	M6x1	18	3.6	0,01
CSTF1108UK		8	42	8	24	6.0	54.0	M8x1.25	22	5.8	0,03
CSTF1110UK		10	48	9	29	7.0	62.5	M10x1.5	27	8.6	0,05
CSTF1112UK		12	54	10	34	8.0	71.0	M12x1.75	30	11.4	0,08
CSTF1115UK		15	63	12	40	10.0	83.0	M14x2	34	17.6	0,14
CSTF1117UK	CSTF1117U2	17	69	14	46	11.0	92.0	M16x2	36	22.4	0,19
CSTF1120UK	CSTF1120U2	20	78	16	53	13.0	104.5	M20x1.5	43	31.5	0,31
CSTF1125UK	CSTF1125U2	25	94	20	64	17.0	126.0	M24x2	53	51.0	0,56
CSTF1130UK	CSTF1130U2	30	110	22	73	19.0	146.5	M30x2	65	65.5	0,89
	CSTF1135U2	35	140	25	82	21.0	181.0	M36x3	82	112.0	1,40
	CSTF1140U2	40	150	28	92	23.0	196.0	M39x3	86	140.0	1,80
	CSTF1145U2	45	163	32	102	27.0	218.0	M42x3	94	180.0	2,60
	CSTF1150U2	50	185	35	112	30.0	241.0	M45x3	106	220.0	3,40
	CSTF1160U2	60	210	44	135	38.0	277.5	M52x3	115	345.0	5,90
	CSTF1170U2	70	235	49	160	42.0	315.0	M56x4	125	440.0	8,20
	CSTF1180U2	80	270	55	180	47.0	360.0	M64x4	140	570.0	12,00

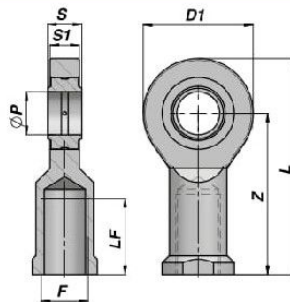
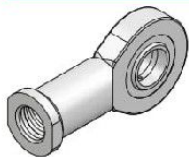
FC = CHARGE DYN. MAXI - MAX DYNAMIC LOAD

MATERIEL : ACIER ISO 12240-4 SERIE E TYPE M  
MATERIAL : STEEL ISO 12240-4 SERIES E TYPE M

**CSTFI..UK**

**NEW!**

**EMBOU A ROTULE SANS LUBRIFICATION  
MAINTENANCE FREE BALL-JOINT**



Code Code Type UK	Code Code Type UK...2RS	ØP	Z	S	D1	S1	L	F	LF min	FC (kN)	kg
CSTF1006UK		6	30	6	21	4.3	40.5	M6x1	11	3.6	0,02
CSTF1008UK		8	36	8	24	6.0	48.0	M8x1.25	15	5.8	0,04
CSTF1010UK		10	43	9	29	7.0	57.5	M10x1.5	20	8.6	0,06
CSTF1012UK		12	50	10	34	8.0	67.0	M12x1.75	24	11.4	0,09
CSTF1015UK		15	61	12	40	10.0	81.0	M14x2	30	17.6	0,18
CSTF1017UK	CSTF1017U2	17	67	14	46	11.0	90.0	M16x2	34	22.4	0,22
CSTF1020UK	CSTF1020U2	20	77	16	53	13.0	103.5	M20x1.5	40	31.5	0,35
CSTF1025UK	CSTF1025U2	25	94	20	64	17.0	126.0	M24x2	48	51.0	0,64
CSTF1030UK	CSTF1030U2	30	110	22	73	19.0	146.5	M30x2	56	65.5	0,93
	CSTF1035U2	35	125	25	82	21.0	166.0	M36x3	60	112.0	1,30
	CSTF1040U2	40	142	28	92	23.0	188.0	M39x3	67	140.0	2,01
	CSTF1045U2	45	145	32	102	27.0	196.0	M42x3	65	180.0	2,50
	CSTF1050U2	50	160	35	112	30.0	216.0	M45x3	69	220.0	3,50
	CSTF1060U2	60	175	44	135	38.0	242.0	M52x3	73	345.0	5,50
	CSTF1070U2	70	200	49	160	42.0	280.0	M56x4	80	440.0	8,60
	CSTF1080U2	80	230	55	180	47.0	320.0	M64x4	85	570.0	12,00

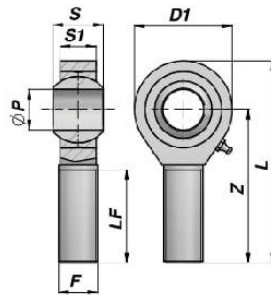
FC = CHARGE DYN. MAXI - MAX DYNAMIC LOAD

MATERIEL : ACIER ISO 12240-4 SERIE E TYPE F  
MATERIAL : STEEL ISO 12240-4 SERIES E TYPE F

**EMBOU A ROTULE**  
**BALL-JOINT END WITH GREASE NIPPLE**

**NEW!**

**CSTFE...PB**



Code Code	ØP	Z	S	D1	S1	L	F	LF min	FC (kN)	kg
CSTF1235PB	5	33	8	16	6.0	41	M5x0.8	20	3.3	0,01
CSTF1236PB	6	36	9	18	6.7	45	M6x1	22	4.3	0,01
CSTF1237PB	8	42	12	22	9.0	53	M8x1.25	25	6.8	0,03
CSTF1238PB	10	48	14	26	10.5	61	M10x1.5	29	10.0	0,08
CSTF1239PB	12	54	16	30	12.0	69	M12x1.75	33	13.0	0,12
CSTF1240PB	14	60	19	34	13.5	77	M14x2	36	17.0	0,14
CSTF1241PB	16	66	21	38	15.0	85	M16x2	40	21.0	0,22
CSTF1242PB	18	72	23	42	16.5	93	M18x1.5	44	26.0	0,32
CSTF1243PB	20	78	25	46	18.0	101	M20x1.5	47	31.0	0,43
CSTF1244PB	22	84	28	50	20.0	109	M22x1.5	51	38.0	0,61
CSTF1245PB	25	94	31	60	22.0	124	M24x2	57	47.0	0,81
CSTF1247PB	28	103	35	66	25.0	136	M27x2	62	59.0	1,20
CSTF1246PB	30	110	37	70	25.0	145	M30x2	66	63.0	1,40

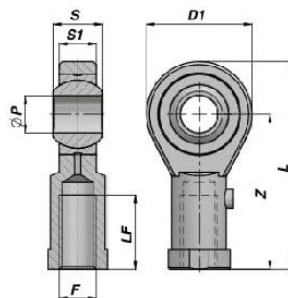
FC = CHARGE DYN. MAXI - MAX DYNAMIC LOAD

MATERIEL : ACIER ISO 12240-4 SERIE K - ISO 6126  
MATERIAL : STEEL ISO 12240-4 SERIES K - ISO 6126

**EMBOU A ROTULE**  
**BALL-JOINT END WITH GREASE NIPPLE**

**NEW!**

**CSTFI...PB**

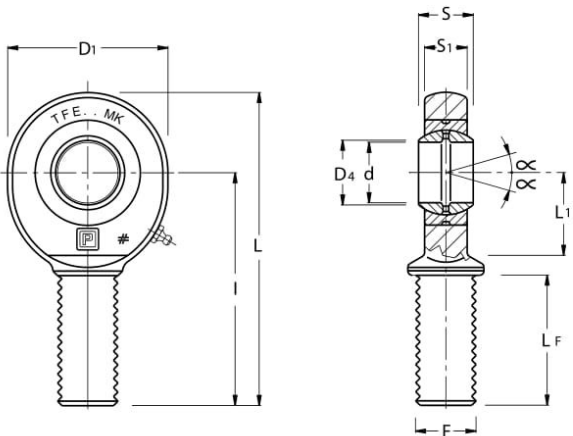


Code Code	ØP	Z	S	D1	S1	L	F	LF min	FC (kN)	kg
CSTF1205PB	5	27	8	16	6.0	35	M5x0.8	14	3.3	0,01
CSTF1206PB	6	30	9	18	6.7	39	M6x1	14	4.3	0,01
CSTF1208PB	8	36	12	22	9.0	47	M8x1.25	17	6.8	0,03
CSTF1210PB	10	43	14	26	10.5	56	M10x1.5	21	10.0	0,08
CSTF1212PB	12	50	16	30	12.0	65	M12x1.75	24	13.0	0,12
CSTF1214PB	14	57	19	34	13.5	74	M14x2	27	17.0	0,14
CSTF1216PB	16	64	21	38	15.0	83	M16x2	33	21.0	0,22
CSTF1218PB	18	71	23	42	16.5	92	M18x1.5	36	26.0	0,32
CSTF1220PB	20	77	25	48	18.0	100	M20x1.5	40	31.0	0,43
CSTF1222PB	22	84	28	50	20.0	109	M22x1.5	43	38.0	0,61
CSTF1225PB	25	94	31	60	22.0	124	M24x2	48	47.0	0,81
CSTF1228PB	28	103	35	66	25.0	136	M27x2	53	59.0	1,20
CSTF1230PB	30	110	37	70	25.0	145	M30x2	56	63.0	1,40

FC = CHARGE DYN. MAXI - MAX DYNAMIC LOAD

MATERIEL : ACIER ISO 12240-4 SERIE K - ISO 6126  
MATERIAL : STEEL ISO 12240-4 SERIES K - ISO 6126





**TFE... MK**  
**TFE... MK MAG.**  
**TFE... MK-2RS**  
**TFE... MK-2RS MAG.**

TERMINALI A SNODO

DIN 648, SERIE E FORMA B - ISO 6126  
 RILUBRIFICABILI

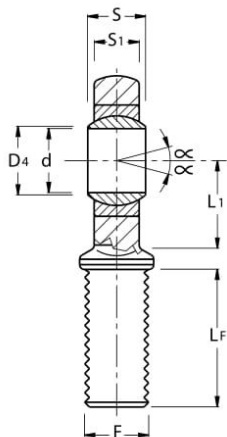
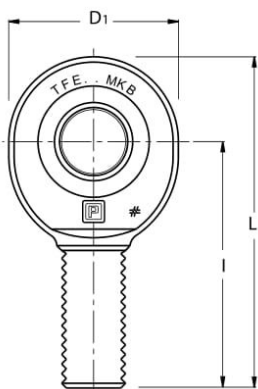
ACCOPPAMENTO: ACCIAIO SU ACCIAIO  
 TERMINALE IN ACCIAIO C45



SIGLA (*)	d	TOLLERANZE		S	D4	I	D1	S1	L	L1	LF	F	FATTORI DI CARICO LIMITE		GIUOCO SNODO RADIALE	ANGOLO DI OSCILLAZIONE $\alpha$	PESO IN Kg.
		d	S										Dinamico $C_c$	Statico $C_o$			
mm.													KN	mm.	gradi		
TFE 6 MK (1)	6	0 ÷ -0.008	0 ÷ -0.12	6	8	36	21	4.3	46.5	12	18	M6X1	3.4	10.2	0.023-0.068	13	0.01
TFE 8 MK (1)	8	0 ÷ -0.008	0 ÷ -0.12	8	10.2	42	24	6	54	14	22	M8X1.25	5.5	16	0.023-0.068	15	0.03
TFE 10 MK (1)	10	0 ÷ -0.008	0 ÷ -0.12	9	13.2	48	29	7	62.5	15	27	M10X1.5	8.1	22	0.023-0.068	12	0.05
TFE 12 MK (1)	12	0 ÷ -0.008	0 ÷ -0.12	10	15	54	34	8	71	19	30	M12X1.75	10.8	30.4	0.023-0.068	11	0.08
TFE 15 MK (2)	15	0 ÷ -0.008	0 ÷ -0.12	12	18.4	63	40	10	83	20	34	M14X2	17	44.8	0.030-0.082	8	0.14
TFE 17 MK (2)	17	0 ÷ -0.008	0 ÷ -0.12	14	20.7	69	46	11	92	23	36	M16X2	21.2	56.5	0.030-0.082	10	0.19
TFE 20 MK (2)	20	0 ÷ -0.010	0 ÷ -0.12	16	24.1	78	53	13	104.5	27.5	43	M20X1.5	30	75.6	0.030-0.082	9	0.31
TFE 25 MK	25	0 ÷ -0.010	0 ÷ -0.12	20	29.3	94	64	17	126	32	53	M24X2	48	88.2	0.037-0.100	7	0.56
TFE 30 MK	30	0 ÷ -0.010	0 ÷ -0.12	22	34.2	110	73	19	146.5	37	65	M30X2	62	119	0.037-0.100	6	0.89
TFE 35 MK-2RS	35	0 ÷ -0.012	0 ÷ -0.12	25	39.7	140	82	21	181	43	82	M36X3	80	159	0.037-0.100	6	1.40
TFE 40 MK-2RS	40	0 ÷ -0.012	0 ÷ -0.12	28	45	150	92	23	196	48	86	M39X3	100	194	0.043-0.120	7	1.80
TFE 45 MK-2RS	45	0 ÷ -0.012	0 ÷ -0.12	32	50.7	163	102	27	218	52	94	M42X3	127	259	0.043-0.120	7	2.60
TFE 50 MK-2RS	50	0 ÷ -0.012	0 ÷ -0.12	35	56	185	112	30	241	60	106	M45X3	156	313	0.043-0.120	6	3.40
TFE 60 MK-2RS	60	0 ÷ -0.015	0 ÷ -0.15	44	66.8	210	135	38	277.5	75	115	M52X3	245	485	0.043-0.120	6	5.90
TFE 70 MK-2RS	70	0 ÷ -0.015	0 ÷ -0.15	49	77.8	235	160	42	315	87	125	M56X4	315	564	0.055-0.142	6	8.20
TFE 80 MK-2RS	80	0 ÷ -0.015	0 ÷ -0.15	55	89.4	270	180	47	360	100	140	M64X4	400	689	0.055-0.142	6	13.10
<b>VERSIONE CON FILETTO MAGGIORATO</b>																	
TFE 40 MK-2RS MAG.	40	0 ÷ -0.012	0 ÷ -0.12	28	45	150	92	23	196	48	86	M42X3	100	180	0.043-0.120	7	1.85
TFE 45 MK-2RS MAG.	45	0 ÷ -0.012	0 ÷ -0.12	32	50.7	163	102	27	218	52	94	M45X3	127	240	0.043-0.120	7	2.66
TFE 50 MK-2RS MAG.	50	0 ÷ -0.012	0 ÷ -0.12	35	56	185	112	30	241	60	106	M52X3	156	290	0.043-0.120	6	4.00
TFE 60 MK-2RS MAG.	60	0 ÷ -0.015	0 ÷ -0.15	44	66.8	210	135	38	277.5	75	115	M60X4	245	450	0.043-0.120	6	6.70
TFE 70 MK-2RS MAG.	70	0 ÷ -0.015	0 ÷ -0.15	49	77.8	235	160	42	315	87	125	M72X4	315	610	0.055-0.142	6	8.38
TFE 80 MK-2RS MAG.	80	0 ÷ -0.015	0 ÷ -0.15	55	89.4	271	180	47	360	100	140	M80X4	400	750	0.055-0.142	6	15.00

(1) NON RILUBRIFICABILE. (2) RILUBRIFICABILE MEDIANTE UN FORO DI LUBRIFICAZIONE SULLA TESTA.

(\*) NEL CASO DI RICHIESTA CON FILETTATURA SINISTRORSA AGGIUNGERE NEL COD. ART. LA LETTERA "L" ES. TFE... - DISPONIBILITA' E PREZZO A RICHIESTA.



## TFE... MKB TFE... T-2RS TFE... T-2RS MAG.

TERMINALI A SNODO

DIN 648, SERIE E - ISO 6126  
ESENTI DA MANUTENZIONE

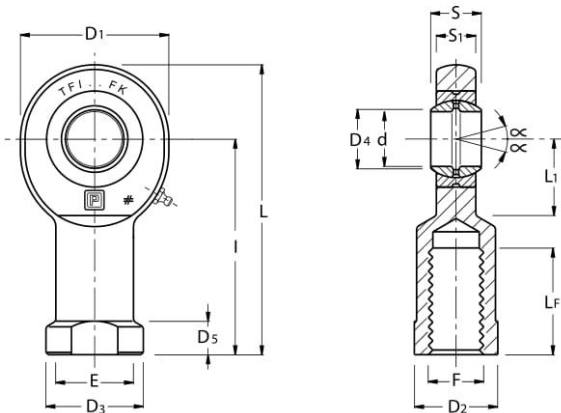
ACCOPIAMENTO: ACCIAIO SU PTFE  
TERMINALE IN ACCIAIO C45



SIGLA (*)	d	TOLLERANZE		S	D4	I	D1	S1	L	L1	LF	F	FATTORI DI CARICO LIMITE		GIUOCO SNODO RADIALE	ANGOLO DI OSCILLAZIONE $\alpha$	PESO IN Kg.
		d	S										Dinamico $C_c$	Statico $C_o$			
mm.													KN	mm.	gradi		
TFE 6 MKB	6	0 ÷ +0.008	0 ÷ -0.12	6	8	36	21	4.3	46.5	12	18	M 6X1	3.6	8.1	0 - 0.032	13	0.01
TFE 8 MKB	8	0 ÷ +0.008	0 ÷ -0.12	8	10.2	42	24	6	54	14	22	M 8X1.25	5.8	12.9	0 - 0.032	15	0.03
TFE 10 MKB	10	0 ÷ +0.008	0 ÷ -0.12	9	13.2	48	29	7	62.5	15	27	M10X1.5	8.6	17.6	0 - 0.032	12	0.05
TFE 12 MKB	12	0 ÷ +0.008	0 ÷ -0.12	10	15	54	34	8	71	19	30	M12X1.75	11.4	24.5	0 - 0.032	11	0.08
TFE 15 MKB	15	0 ÷ +0.008	0 ÷ -0.12	12	18.4	63	40	10	83	20	34	M14X2	17.6	36	0 - 0.040	8	0.14
TFE 17 MKB (T-2RS)	17	0 ÷ +0.008	0 ÷ -0.12	14	20.7	69	46	11	92	23	36	M16X2	22.4	45	0 - 0.040	10	0.19
TFE 20 MKB (T-2RS)	20	0 ÷ +0.010	0 ÷ -0.12	16	24.1	78	53	13	104.5	27.5	43	M20X1.5	31.5	60	0 - 0.040	9	0.31
TFE 25 MKB (T-2RS)	25	0 ÷ +0.010	0 ÷ -0.12	20	29.3	94	64	17	126	33	53	M24X2	51	83	0 - 0.050	7	0.56
TFE 30 MKB (T-2RS)	30	0 ÷ +0.010	0 ÷ -0.12	22	34.2	110	73	19	146.5	37	65	M30X2	65.5	110	0 - 0.050	6	0.89
TFE 35 T-2RS	35	0 ÷ +0.012	0 ÷ -0.12	25	39.7	140	82	21	181	43	82	M36X3	112	146	0 - 0.050	6	1.40
TFE 40 T-2RS	40	0 ÷ +0.012	0 ÷ -0.12	28	45	150	92	23	196	48	86	M39X3	140	180	0 - 0.060	7	1.80
TFE 45 T-2RS	45	0 ÷ +0.012	0 ÷ -0.12	32	50.7	163	102	27	218	52	94	M42X3	180	240	0 - 0.060	7	2.60
TFE 50 T-2RS	50	0 ÷ +0.012	0 ÷ -0.12	35	56	185	112	30	241	60	106	M45X3	220	290	0 - 0.060	6	3.40
TFE 60 T-2RS	60	0 ÷ +0.015	0 ÷ -0.15	44	66.8	210	135	38	277.5	75	115	M52X3	345	450	0 - 0.060	6	5.90
TFE 70 T-2RS	70	0 ÷ +0.015	0 ÷ -0.15	49	77.8	235	160	42	315	87	125	M56X4	440	610	0 - 0.072	6	8.20
TFE 80 T-2RS	80	0 ÷ +0.015	0 ÷ -0.15	55	89.4	270	180	47	360	100	140	M64X4	570	750	0 - 0.072	6	12.00
<b>VERSIONE CON FILETTO MAGGIORATO</b>													180				
TFE 40 T-2RS MAG.	40	0 ÷ +0.012	0 ÷ -0.12	8	45	150	92	23	196	48	86	M42X3	140		0 - 0.060	7	1.85
TFE 45 T-2RS MAG.	45	0 ÷ +0.012	0 ÷ -0.12	32	50.7	163	102	27	218	52	94	M45X3	180	240	0 - 0.060	7	2.66
TFE 50 T-2RS MAG.	50	0 ÷ +0.012	0 ÷ -0.12	35	56	185	112	30	241	60	106	M52X3	220	290	0 - 0.060	6	3.50
TFE 60 T-2RS MAG.	60	0 ÷ +0.015	0 ÷ -0.15	44	66.8	210	135	38	277.5	75	115	M60X4	345	450	0 - 0.060	6	6.02
TFE 70 T-2RS MAG.	70	0 ÷ +0.015	0 ÷ -0.15	49	77.8	235	160	42	315	87	125	M72X4	440	610	0 - 0.072	6	8.38
TFE 80 T-2RS MAG.	80	0 ÷ +0.015	0 ÷ -0.15	55	89.4	270	180	47	360	100	140	M80X4	570	750	0 - 0.072	6	12.20

(\*) NEL CASO DI RICHIESTA CON FILETTATURA SINISTRORSA AGGIUNGERE NEL COD. ART. LA LETTERA "L" ES. TFE... - DISPONIBILITA' E PREZZO A RICHIESTA.





**TFI...FK**  
**TFI...FK MAG.**  
**TFI...FK-2RS**  
**TFI...FK-2RS MAG.**

TERMINALI A SNODO

DIN 648, SERIE E FORMA B - ISO 6126  
 RILUBRIFICABILI

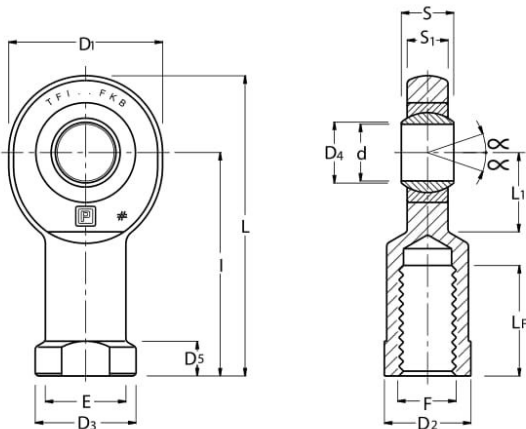
ACCOPIAMENTO: ACCIAIO SU ACCIAIO  
 TERMINALE IN ACCIAIO C45



SIGLA (*)	d	TOLLERANZE		S	D4	I	D1	D3	E	D2	D5	S1	L	L1	LF	F	FATTORI DI CARICO LIMITE		GIUOCO SNODO RADIALE	ANGOLO DI OSCILLAZIONE α	PESO IN Kg.								
		d	S														Dinamico C	Statico Co											
																		KN		mm.	gradi								
																		mm.											
TFI 6 FK (1)	6	0 ÷ -0.008	0 ÷ -0.12	6	8	30	21	13	10.5	11	5	4.3	40.5	10.5	11	M 6X1	3.4	8.1	0.023 - 0.068	13	0.02								
TFI 8 FK (1)	8	0 ÷ -0.008	0 ÷ -0.12	8	10.2	36	24	15	12	13	5	6	48	12	15	M 8X1.25	5.5	12.9	0.023 - 0.068	15	0.04								
TFI 10 FK (1)	10	0 ÷ -0.008	0 ÷ -0.12	9	13.2	43	29	18	15	15	6.5	7	57.5	14	20	M10X1.5	8.1	17.6	0.023 - 0.068	12	0.06								
TFI 12 FK (1)	12	0 ÷ -0.008	0 ÷ -0.12	10	15	50	34	20	17	18	6.5	8	67	17.5	24	M12X1.75	10.8	24.5	0.023 - 0.068	11	0.09								
TFI 15 FK (2)	15	0 ÷ -0.008	0 ÷ -0.12	12	18.4	61	40	24	20	21	8	10	81	20	30	M14X2	17	36	0.030 - 0.082	8	0.18								
TFI 17 FK (2)	17	0 ÷ -0.008	0 ÷ -0.12	14	20.7	67	46	28	23	24	10	11	90	23	34	M16X2	21.2	45	0.030 - 0.082	10	0.22								
TFI 20 FK (2)	20	0 ÷ -0.010	0 ÷ -0.12	16	24.1	77	53	35	27.5	32	10	13	103.5	27.5	40	M20X1.5	30	60	0.030 - 0.082	9	0.35								
TFI 25 FK	25	0 ÷ -0.010	0 ÷ -0.12	20	29.3	94	64	42	33.5	36	12	17	126	32	48	M24X2	48	83	0.037 - 0.100	7	0.64								
TFI 30 FK	30	0 ÷ -0.010	0 ÷ -0.12	22	34.2	110	73	50	40	41	15	19	146.5	37	56	M30X2	62	110	0.037 - 0.100	6	0.93								
TFI 35 FK-2RS	35	0 ÷ -0.012	0 ÷ -0.12	25	39.7	125	82	58	47	50	15	21	166	42	60	M36X3	80	146	0.037 - 0.100	6	1.30								
TFI 40 FK-2RS	40	0 ÷ -0.012	0 ÷ -0.12	28	45	142	92	65	52	55	18	23	188	48	67	M39X3	100	180	0.043 - 0.120	7	2.01								
TFI 45 FK-2RS	45	0 ÷ -0.012	0 ÷ -0.12	32	50.7	145	102	70	58	60	20	27	196	52	65	M42X3	127	240	0.043 - 0.120	7	2.50								
TFI 50 FK-2RS	50	0 ÷ -0.012	0 ÷ -0.12	35	56	160	112	75	62	65	20	30	216	59	69	M45X3	156	290	0.043 - 0.120	6	3.50								
TFI 60 FK-2RS	60	0 ÷ -0.015	0 ÷ -0.15	44	66.8	175	135	88	70	75	20	38	242	75	73	M52X3	245	450	0.043 - 0.120	6	5.50								
TFI 70 FK-2RS	70	0 ÷ -0.015	0 ÷ -0.15	49	77.8	200	160	98	85	80	20	42	280	87	80	M56X4	315	610	0.055 - 0.142	6	8.60								
TFI 80 FK-2RS	80	0 ÷ -0.015	0 ÷ -0.15	55	89.4	230	180	110	95	100	25	47	320	100	85	M64X4	400	750	0.055 - 0.142	6	12.00								
<b>VERSIONE CON FILETTO MAGGIORATO</b>																													
TFI 40 FK-2RS MAG.	40	0 ÷ -0.012	0 ÷ -0.12	28	45	142	92	65	52	55	18	23	188	48	67	M42X3	100	180	0.043 - 0.120	7	1.96								
TFI 45 FK-2RS MAG.	45	0 ÷ -0.012	0 ÷ -0.12	32	50.7	145	102	70	58	60	20	27	196	52	65	M45X3	127	240	0.043 - 0.120	7	2.44								
TFI 50 FK-2RS MAG.	50	0 ÷ -0.012	0 ÷ -0.12	35	56	160	112	75	62	65	20	30	216	59	69	M52X3	156	290	0.043 - 0.120	6	3.40								
TFI 60 FK-2RS MAG.	60	0 ÷ -0.015	0 ÷ -0.15	44	66.8	175	135	88	70	75	20	38	242	75	73	M60X4	245	450	0.043 - 0.120	6	6.10								
TFI 70 FK-2RS MAG.	70	0 ÷ -0.015	0 ÷ -0.15	49	77.8	200	160	98	85	80	20	42	280	87	80	M72X4	315	610	0.055 - 0.142	6	8.70								
TFI 80 FK-2RS MAG.	80	0 ÷ -0.015	0 ÷ -0.15	55	89.4	230	180	110	95	100	25	47	320	100	85	M80X4	400	750	0.055 - 0.142	6	13.90								

(1) NON RILUBRIFICABILE. (2) RILUBRIFICABILE MEDIANTE UN FORO DI LUBRIFICAZIONE SULLA TESTA.

(\*) NEL CASO DI RICHIESTA CON FILETTATURA SINISTRORSA AGGIUNGERE NEL COD. ART. LA LETTERA "L" ES. TFI... - DISPONIBILITA' E PREZZO A RICHIESTA.



## TFI...FKB TFI...T-2RS TFI...T-2RS MAG.

TERMINALI A SNODO

DIN 648, SERIE E FORMA B - ISO 6126  
ESENTI DA MANUTENZIONE

ACCOPIAMENTO: ACCIAIO SU PTFE  
TERMINALE IN ACCIAIO C45

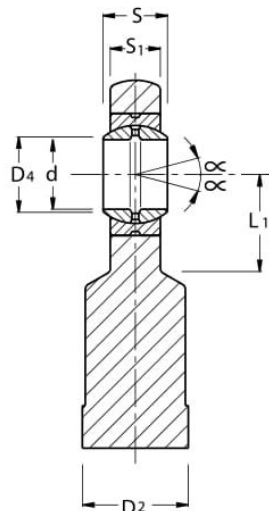
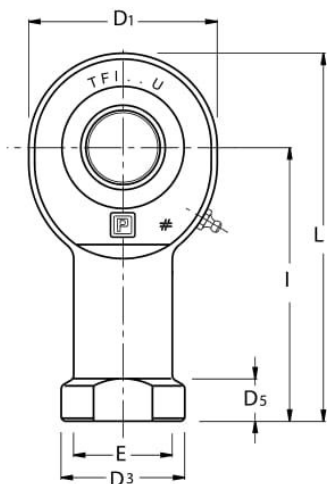


SIGLA (*)	d	TOLLERANZE		S	D4	I	D1	D3	E	D2	D5	S1	L	L1	LF	F	FATTORI DI CARICO LIMITE		GIUOCO SNODO RADIALE	ANGOLO DI OSCILLAZIONE $\alpha$	PESO IN Kg.
		d	S														Dinamico $C_c$	Statico $C_0$			
mm.																	KN	mm.	gradi		
TFI 6 FKB (1)	6	0 ÷ -0.008	0 ÷ -0.12	6	8	30	21	13	10.5	11	5	4.3	40.5	10.5	11	M 6X1	3.6	8.1	0.023 - 0.068	13	0.02
TFI 8 FKB (1)	8	0 ÷ -0.008	0 ÷ -0.12	8	10.2	36	24	15	12	13	5	6	48	12	15	M 8X1.25	5.8	12.9	0.023 - 0.068	15	0.04
TFI 10 FKB (1)	10	0 ÷ -0.008	0 ÷ -0.12	9	13.2	43	29	18	15	15	6.5	7	57.5	14	20	M10X1.5	8.6	17.6	0.023 - 0.068	12	0.06
TFI 12 FKB (1)	12	0 ÷ -0.008	0 ÷ -0.12	10	15	50	34	20	17	18	6.5	8	67	17.5	24	M12X1.75	11.4	24.5	0.023 - 0.068	11	0.09
TFI 15 FKB (2)	15	0 ÷ -0.008	0 ÷ -0.12	12	18.4	61	40	24	20	21	8	10	81	20	30	M14X2	17.6	36	0.030 - 0.082	8	0.18
TFI 17 FKB (F2RS) (2)	17	0 ÷ -0.008	0 ÷ -0.12	14	20.7	67	46	28	23	24	10	11	90	23	34	M16X2	22.4	45	0.030 - 0.082	10	0.22
TFI 20 FKB (F2RS) (2)	20	0 ÷ -0.010	0 ÷ -0.12	16	24.1	77	53	35	27.5	32	10	13	103.5	27.5	40	M20X1.5	31.5	60	0.030 - 0.082	9	0.35
TFI 25 FKB (F2RS)	25	0 ÷ -0.010	0 ÷ -0.12	20	29.3	94	64	42	33.5	36	12	17	126	32	48	M24X2	51	83	0.037 - 0.100	7	0.64
TFI 30 FKB (F2RS)	30	0 ÷ -0.010	0 ÷ -0.12	22	34.2	110	73	50	40	41	15	19	146.5	37	56	M30X2	66.5	110	0.037 - 0.100	6	0.93
TFI 35 T-2RS	35	0 ÷ -0.012	0 ÷ -0.12	25	39.7	125	82	58	47	50	15	21	166	42	60	M36X3	112	146	0.037 - 0.100	6	1.30
TFI 40 T-2RS	40	0 ÷ -0.012	0 ÷ -0.12	28	45	142	92	65	52	55	18	23	188	48	67	M39X3	140	180	0.043 - 0.120	7	2.01
TFI 45 T-2RS	45	0 ÷ -0.012	0 ÷ -0.12	32	50.7	145	102	70	58	60	20	27	196	52	65	M42X3	180	240	0.043 - 0.120	7	2.50
TFI 50 T-2RS	50	0 ÷ -0.012	0 ÷ -0.12	35	56	160	112	75	62	65	20	30	216	59	69	M45X3	220	290	0.043 - 0.120	6	3.50
TFI 60 T-2RS	60	0 ÷ -0.015	0 ÷ -0.15	44	66.8	175	135	88	70	75	20	38	242	75	73	M52X3	345	450	0.043 - 0.120	6	5.50
TFI 70 T-2RS	70	0 ÷ -0.015	0 ÷ -0.15	49	77.8	200	160	98	85	80	20	42	280	87	80	M56X4	440	610	0.055 - 0.142	6	8.60
TFI 80 T-2RS	80	0 ÷ -0.015	0 ÷ -0.15	55	89.4	230	180	110	95	100	25	47	320	100	85	M64X4	570	750	0.055 - 0.142	6	12.00
<b>VERSIONE CON FILETTO MAGGIORATO</b>																					
TFI 40 T-2RS MAG.	40	0 ÷ -0.012	0 ÷ -0.12	28	45	142	92	65	52	55	18	23	188	48	67	M42X3	140	180	0.043 - 0.120	7	1.96
TFI 45 T-2RS MAG.	45	0 ÷ -0.012	0 ÷ -0.12	32	50.7	145	102	70	58	60	20	27	196	52	65	M45X3	180	240	0.043 - 0.120	7	2.44
TFI 50 T-2RS MAG.	50	0 ÷ -0.012	0 ÷ -0.12	35	56	160	112	75	62	65	20	30	216	59	69	M52X3	220	290	0.043 - 0.120	6	3.40
TFI 60 T-2RS MAG.	60	0 ÷ -0.015	0 ÷ -0.15	44	66.8	175	135	88	70	75	20	38	242	75	73	M60X4	345	450	0.043 - 0.120	6	5.38
TFI 70 T-2RS MAG.	70	0 ÷ -0.015	0 ÷ -0.15	49	77.8	200	160	98	85	80	20	42	280	87	80	M72X4	410	610	0.055 - 0.142	6	8.42
TFI 80 T-2RS MAG	80	0 ÷ -0.015	0 ÷ -0.15	55	89.4	230	180	110	95	100	25	47	320	100	85	M80X4	570	750	0.055 - 0.142	6	11.80

(1) NON RILUBRIFICABILE. (2) RILUBRIFICABILE MEDIANTE UN FORO DI LUBRIFICAZIONE SULLA TESTA.

(\*) NEL CASO DI RICHIESTA CON FILETTATURA SINISTRORSA AGGIUNGERE NEL COD. ART. LA LETTERA "L" ES. TFI... - DISPONIBILITA' E PREZZO A RICHIESTA.





## TFI... U (LUBRIFICABILE)

## TFI... UB (ESENTE LUBRIF.)

TERMINALI A SNODO  
DIN 648, SERIE E FORMA B - ISO 6126  
(SENZA FILETTATURA)

RILUBRIFICABILI/NON RILUBRIFICABILI  
ACCOPIAMENTO: ACCIAIO SU ACCIAIO (U)  
ACCIAIO SU PTFE (UB)  
TERMINALE IN ACCIAIO C45



SIGLA (*)	d	TOLLERANZE		S	D4	I	D1	D3	E	D2	D5	S1	L	L1	FATTORI DI CARICO LIMITE		GIUOCO SNODO RADIALE	ANGOLO DI OSCILLAZIONE $\alpha$	PESO IN Kg.
		d	S												Dinamico $C_c$	Statico $C_o$			
mm.															KN	mm.	gradi		
TFI 6 U/UB (1)	6	0 ÷ -0.008	0 ÷ -0.12	6	8	30	21	13	10.5	11	5	4.3	40.5	10.5	3.4	8.1	0.023 - 0.068	13	0.02
TFI 8 U/UB (1)	8	0 ÷ -0.008	0 ÷ -0.12	8	10.2	36	24	15	12.5	13	5	6	48	12	5.5	12.9	0.023 - 0.068	15	0.04
TFI 10 U/UB (1)	10	0 ÷ -0.008	0 ÷ -0.12	9	13.2	43	29	18	15	15	6.5	7	57.5	14	8.1	17.6	0.023 - 0.068	12	0.07
TFI 12 U/UB (1)	12	0 ÷ -0.008	0 ÷ -0.12	10	15	50	34	20	17	18	6.5	8	67	17.5	10.8	24.5	0.023 - 0.068	11	0.13
TFI 15 U/UB (2)	15	0 ÷ -0.008	0 ÷ -0.12	12	18.4	61	40	24	20	21	8	10	81	20	17	36	0.030 - 0.082	8	0.22
TFI 17 U/UB (2)	17	0 ÷ -0.008	0 ÷ -0.12	14	20.7	67	46	28	23	24	10	11	90	23	21.2	45	0.030 - 0.082	10	0.30
TFI 20 U/UB (2)	20	0 ÷ -0.010	0 ÷ -0.12	16	24.1	77	53	35	27.5	32	10	13	103.5	27.5	30	60	0.030 - 0.082	9	0.46
TFI 25 U/UB	25	0 ÷ -0.010	0 ÷ -0.12	20	29.3	94	64	42	33.5	36	12	17	126	32	48	83	0.037 - 0.100	7	0.81
TFI 30 U/UB	30	0 ÷ -0.010	0 ÷ -0.12	22	34.2	110	73	50	40	41	15	19	146.5	37	62	110	0.037 - 0.100	6	1.20
TFI 35 U/UB	35	0 ÷ -0.012	0 ÷ -0.12	25	39.7	125	82	58	47	50	15	21	166	42	80	146	0.037 - 0.100	6	1.90
TFI 40 U/UB	40	0 ÷ -0.012	0 ÷ -0.12	28	45	142	92	65	52	55	18	23	188	48	100	180	0.043 - 0.120	7	2.70
TFI 45 U/UB	45	0 ÷ -0.012	0 ÷ -0.12	32	50.7	145	102	70	58	60	20	27	196	52	127	240	0.043 - 0.120	7	3.80
TFI 50 U/UB	50	0 ÷ -0.012	0 ÷ -0.12	35	56	160	112	75	62	65	20	30	216	59	156	290	0.043 - 0.120	6	5.00
TFI 60 U/UB	60	0 ÷ -0.015	0 ÷ -0.15	44	66.8	175	135	88	70	75	20	38	242	75	245	450	0.043 - 0.120	6	7.30
TFI 70 U/UB	70	0 ÷ -0.015	0 ÷ -0.15	49	77.8	200	160	98	85	80	20	42	280	87	315	610	0.055 - 0.142	6	11.40
TFI 80 U/UB	80	0 ÷ -0.015	0 ÷ -0.15	55	89.4	230	180	110	95	100	25	47	320	100	400	750	0.055 - 0.142	6	16.10

(\*) FORNIBILI ANCHE NELLA VERSIONE CON SNODO SFERICO RADIALE CON TENUTA - (...-2RS) . DISPONIBILITA' E PREZZO A RICHIESTA.