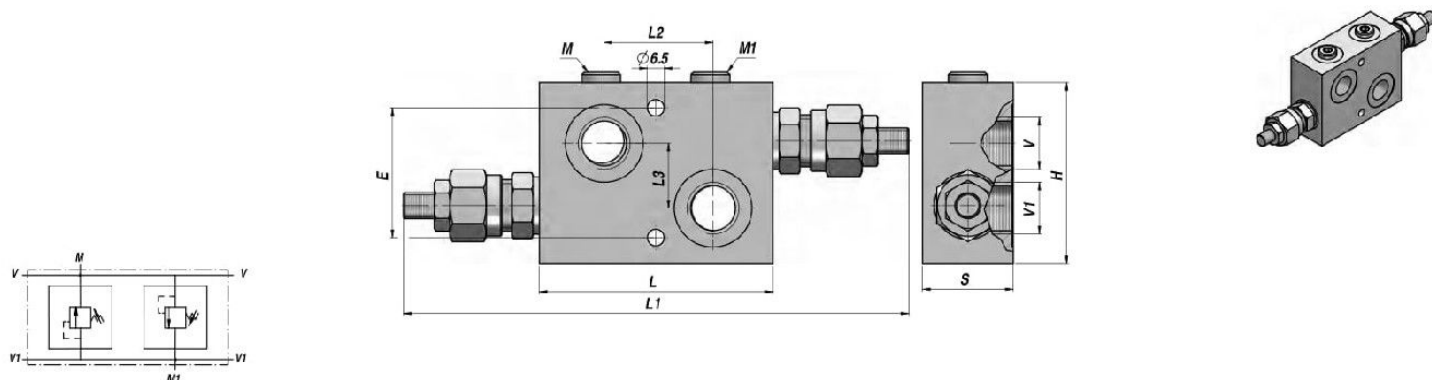


VALVE ANTICHOC DOUBLE  
DUAL CROSS-OVER RELIEF VALVE

VMDI 35



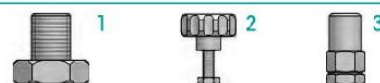
Code Code	V BSP	V1 BSP	M-M1 BSP	Q MAX l/min	P MAX bar	Type Type	L	L1 max	L2	L3	E	H	S	kg
VAG021.0320B1	3/8"	3/8"	1/4"	35	350	VMDI A35-020-B1	90	190	42	25	50	70	35	0,79
VAG021.0330B1	1/2"	1/2"	1/4"	35	350	VMDI A35-030-B1	90	190	42	25	50	70	35	0,79

RESSORT - SPRING : A= 5:50 bar - B= 40:210 bar ( Standard ) - C= 100:350 bar

1= Vis - Screw ( Standard )

REGLAGE - SETTING : 2= Volant - Knob

3= Vis+protection - Screw + protection cup



SUR DEMANDE - ON REQUEST : ACIER - STEEL (VMDI-S- 400 bar)

MATERIEL CORPS : ALUMINIUM

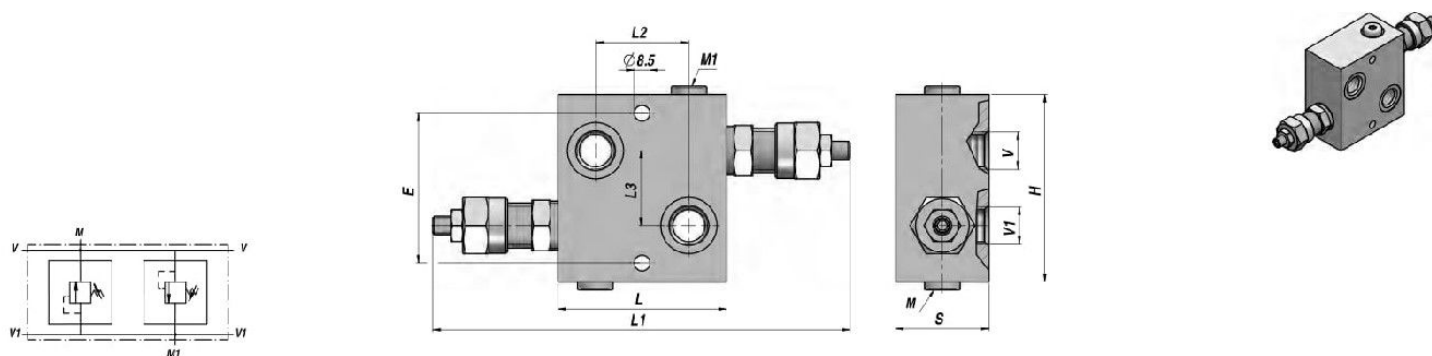
MONTAGE EN LIGNE

BODY MATERIAL : ALUMINIUM

LINE MOUNTING

VALVE ANTICHOC DOUBLE  
DUAL CROSS-OVER RELIEF VALVE

VMDI 80



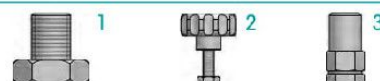
Code Code	V BSP	V1 BSP	M-M1 BSP	Q MAX l/min	P MAX bar	Type Type	L	L1 max	L2	L3	E	H	S	kg
VAG021.0830B1	1/2"	1/2"	1/4"	80	260	VMDI A80-030-B1	90	240	50	40	80	100	50	1,65
VAG021.0840B1	3/4"	3/4"	1/4"	80	260	VMDI A80-040-B1	90	240	50	40	80	100	50	1,60

RESSORT - SPRING : A= 5:50 bar - B= 20:260 bar ( Standard ) - C= 120:350 bar

1= Vis - Screw ( Standard )

REGLAGE - SETTING : 2= Volant - Knob

3= Vis+protection - Screw + protection cup



SUR DEMANDE - ON REQUEST : ACIER - STEEL (VMDI-S- 350 bar)

MATERIEL CORPS : ALUMINIUM

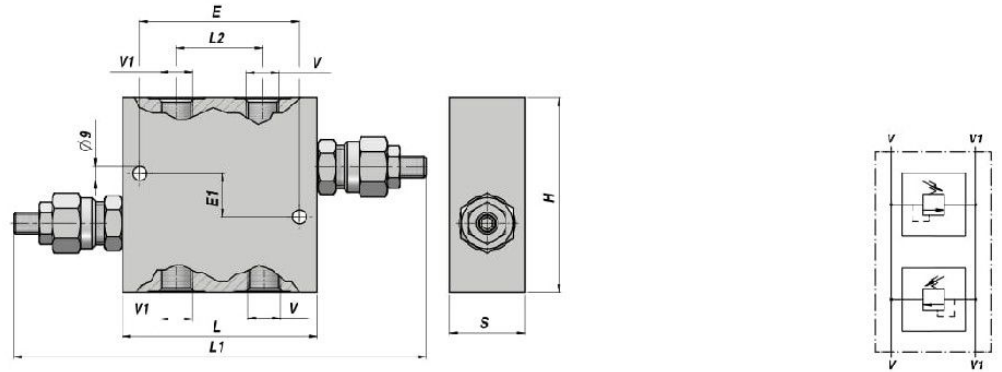
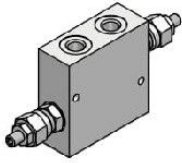
MONTAGE EN LIGNE

BODY MATERIAL : ALUMINIUM

LINE MOUNTING

**VBDC 35**

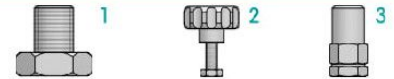
**VALVE ANTICHOC DOUBLE  
DUAL CROSS-OVER RELIEF VALVE**



Code Code	V BSP	V1 BSP	Q MAX l/min	P MAX bar	Type Type	L	L1	L2	E	E1	H	S	kg
VAG022.0320B1	3/8"	3/8"	35	350	VBDC A35-020-B1	90	218	40	74	20	90	35	0,80
VAG022.0330B1	1/2"	1/2"	35	350	VBDC A35-030-B1	90	218	40	74	20	90	35	0,80

RESSORT - SPRING : A= 5:50 bar - B= 40:210 bar ( Standard ) - C= 100:350 bar

REGLAGE - SETTING :  
 1= Vis - Screw ( Standard )  
 2= Volant - Knob  
 3= Vis+protection - Screw + protection cup



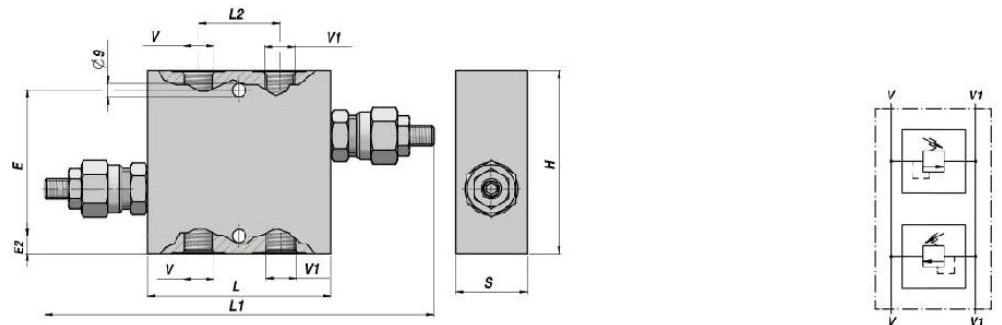
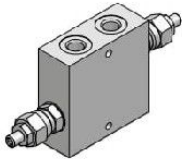
SUR DEMANDE - ON REQUEST : ACIER - STEEL (VBDC-S - 400 bar)

MATERIEL CORPS : ALUMINIUM MONTAGE EN LIGNE  
 BODY MATERIAL : ALUMINIUM LINE MOUNTING

**VBDC 80**

**NEW!**

**VALVE ANTICHOC DOUBLE  
DUAL CROSS-OVER RELIEF VALVE**



Code Code	V BSP	V1 BSP	Q MAX l/min	P MAX bar	Type Type	L	L1	L2	E	E1	H	S	kg
VAG022.0830B1	1/2"	1/2"	80	260	VBDC A80-030-B1	94	250	38	65	-	100	40	1,65
VAG022.0840B1	3/4"	3/4"	80	260	VBDC A80-040-B1	94	250	38	65	-	100	40	1,60

RESSORT - SPRING : A= 5:50 bar - B= 20:260 bar ( Standard ) - C= 120:350 bar

REGLAGE - SETTING :  
 1= Vis - Screw ( Standard )  
 2= Volant - Knob  
 3= Vis+protection - Screw + protection cup



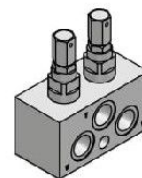
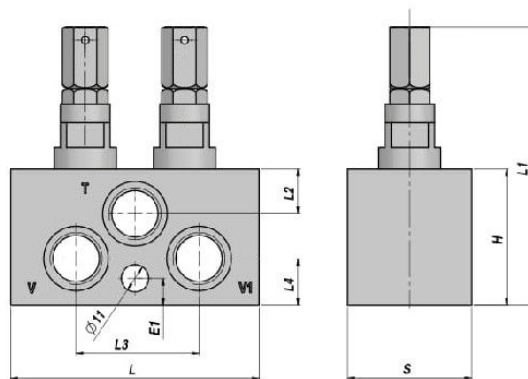
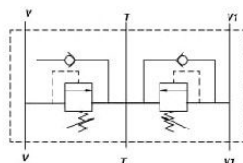
SUR DEMANDE - ON REQUEST : ACIER - STEEL (VBDC-S - 400 bar)

MATERIEL CORPS : ALUMINIUM MONTAGE EN LIGNE  
 BODY MATERIAL : ALUMINIUM LINE MOUNTING

VALVE ANTICHOC DOUBLE (TYPE DIFFERENTIEL) + ANTICAVITATION  
 DUAL CROSS RELIEF VALVE (DIFFERENTIAL TYPE) + ANTICAVITATION

NEW!

VMDA-CSV



Code Code	V-V1 BSP	T BSP	Q MAX l/min	P MAX bar	Type Type	L	L1 max	L2	L3	L4	E1	H	S	kg
VAG020.0320D3	3/8"	3/8"	45	350	VMDC-CSV-020-D3	100	118	37	64	19	10	55	50	1,85
VAG020.0330D3	1/2"	1/2"	70	350	VMDC-CSV-030-D3	100	118	37	64	19	10	55	50	1,85

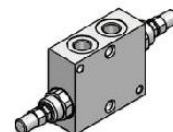
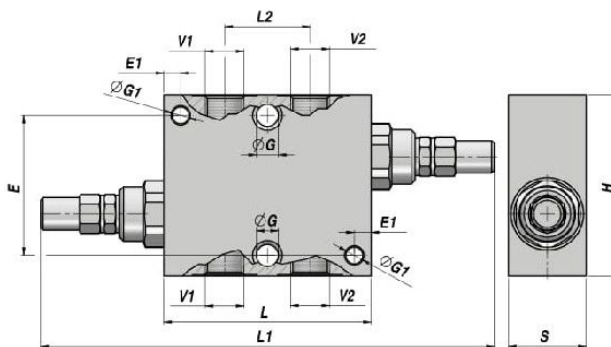
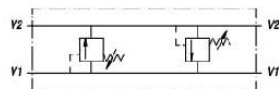
RESSORT - SPRING : C= 95:125 bar - D= 125:160 bar ( Standard )

MATERIEL CORPS : ALUMINIUM  
 BODY MATERIAL : ALUMINIUM

MONTAGE EN LIGNE  
 LINE MOUNTING

VALVE ANTICHOC DOUBLE  
 DUAL CROSS-OVER RELIEF VALVE

VAU/DE



Code Code	V1 BSP	V2 BSP	Q MAX l/min	P MAX bar	Type Type	L	L1	L2	ØG	E	ØG1	E1	H	S	kg
V0590.0438	1/4"	1/4"	30	300	VAU/DE 1/4" C	60	156	26	-	54	6.5	6.5	70	30	0,99
V0590.0440	3/8"	3/8"	45	300	VAU/DE 3/8" C	80	176	33	8.5	54	-	-	70	30	1,21
V0590.0450	1/2"	1/2"	70	300	VAU/DE 1/2" C	80	200	38	8.5	54	-	-	70	30	1,15
V0590.0460	3/4"	3/4"	110	300	VAU/DE 3/4" C	95	215	44	8.5	54	-	-	80	35	1,68

RESSORT - SPRING : A= 10:50 bar - B= 20:100 bar - C= 10:180 bar ( Standard ) - D= 50:250 bar - E= 80:300 bar

MATERIEL CORPS : ACIER  
 BODY MATERIAL : STEEL

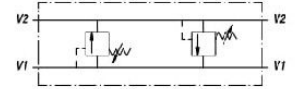
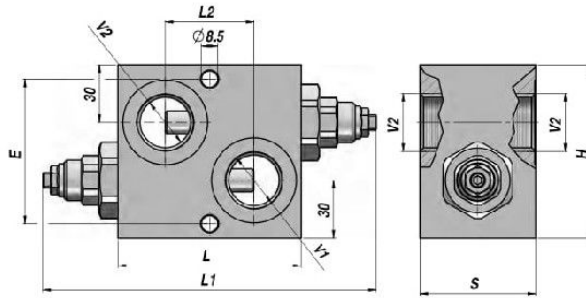
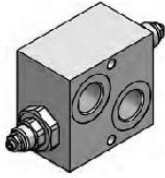
MONTAGE EN LIGNE  
 LINE MOUNTING



# VALVES CONTROLE PRESSION - PRESSURE CONTROL VALVES

## VAU/DE 1"

## VALVE ANTICHOC DOUBLE (TYPE DIFFERENTIEL) DUAL CROSS-OVER RELIEF VALVE (DIFFERENTIAL TYPE)



Code Code	V1 BSP	V2 BSP	Q MAX l/min	P MAX bar	Type Type	L	L1	L2	E	H	S	kg
V0590.0470	1"	1"	160	350	VAU/DE 1" Q	95	199	46	75	90	60	3,20

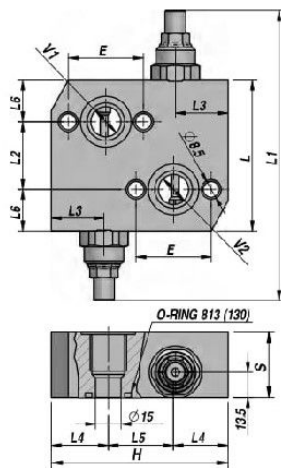
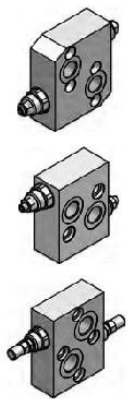
RESSORT - SPRING : N= 20:200 bar - Q= 50:400 bar ( Standard )

MATERIEL CORPS : ACIER  
BODY MATERIAL : STEEL

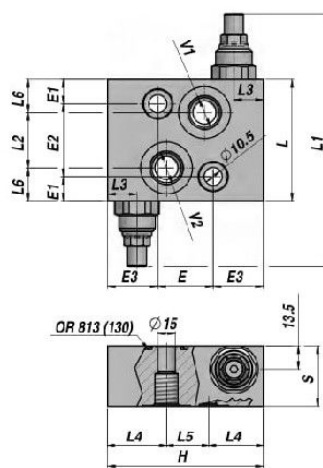
MONTAGE EN LIGNE  
LINE MOUNTING

## VAU/DE MP-R-S-T

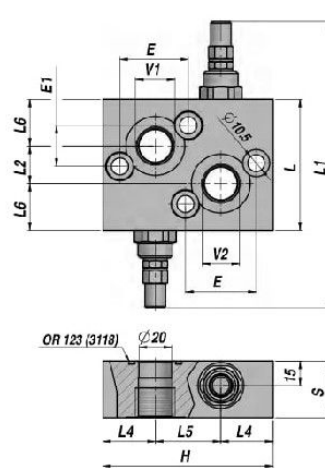
## VALVE ANTICHOC POUR MOTEURS CROSS LINE RELIEF VALVE FOR MOTORS



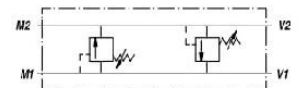
VAU OMP-OMR



VAU OMS



VAU OMT



Code Code	V1 BSP	V2 BSP	Q MAX l/min	P MAX bar	Type Type	L	L1	L2	L3	L4	L5	L6	E	E1	E2	E3	H	S	kg
V0590.0500	1/2"	1/2"	60	300	VAU/DE 1/2"C (OMP/R)	80	164	36	28	29	36	22.0	40.0	-	-	-	94	35	1,75
V0590.0490	1/2"	1/2"	50	300	VAU/DE 1/2"C (OMS)	70	154	32	17	34	22	19.0	32.0	14	42	29	90	35	1,33
V0590.0505	3/4"	3/4"	100	300	VAU/DE 3/4"C (OMT)	80	188	23	-	32	40	28.5	43.2	25	-	-	104	35	1,92

RESSORT - SPRING : B= 20:100 bar - C= 10:180 bar ( Standard ) - D= 50:250 bar - E= 80:300 bar

SUR DEMANDE - ON REQUEST : VAU/DE/SF ... AVEC DEBLOCAGE FREIN - WITH BRAKE RELEASE PORT

MATERIEL CORPS : ACIER  
BODY MATERIAL : STEEL

FLASQUABLE  
FACE MOUNTING