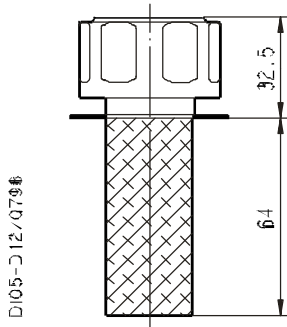


FILLER BREATHER FILTERS SERIES HB

Replaces: HB 01 T E / 07.10.99

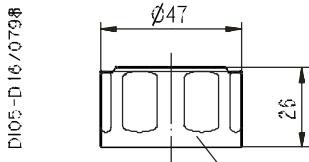
The filler breather filters HB series are built in steel and are protected with special treatments allowing utilization and exposure to the atmospheric agents. The range includes particular options like the pressurization valve and the air filtration.

HB 50

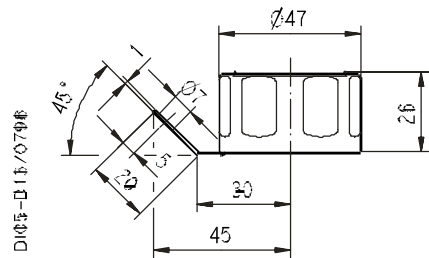


TECHNICAL DATA	
Degree of filtration air	10 [m] - 40 [m]
Air flow	10 [m] 250 [l/min]
	40 [m] 285 [l/min]
Operating temperature	- 30 + 90 [°C]
Fluid compatibility	Mineral oils
	Synthetic fluids
Seals	Buna
Weight	0,070 0,090 [Kg]

CAP



CAP WITH LOCKING LUG

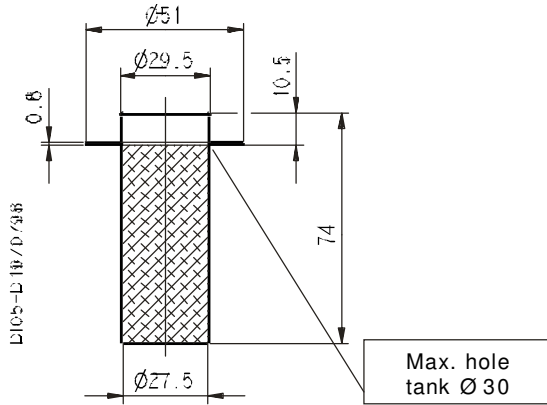


Also available with chain

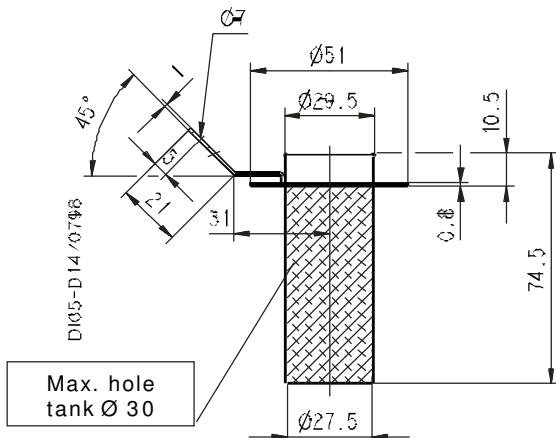
Edition: 02/04.2000



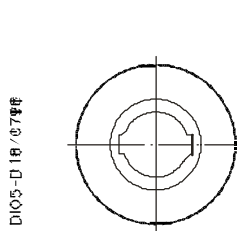
MOUNTING FLANGE WITH BASKET



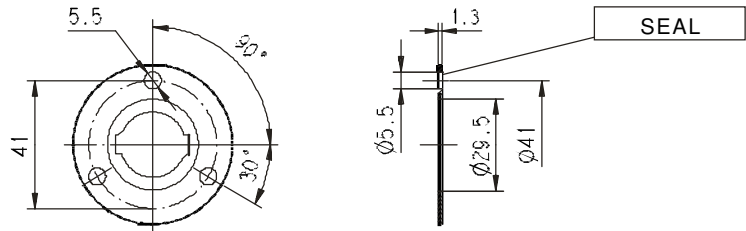
MOUNTING FLANGE WITH BASKET AND LOCKING LUG



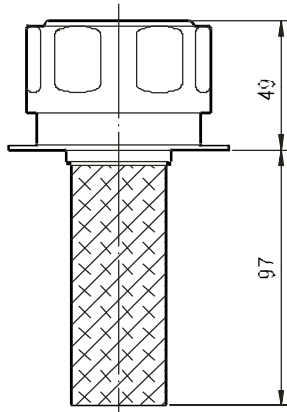
WELD-ON MOUNTING



MOUNTING WITH SCREWS



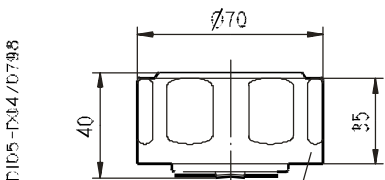
HB 70



TECHNICAL DATA

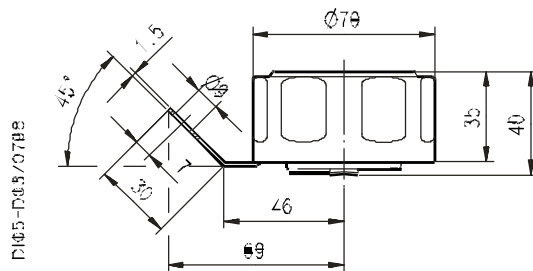
Degree of filtration air	10 [m] - 40 [m]	
Air flow	10 [m]	450 [l/min]
	40 [m]	480 [l/min]
Operating temperature	- 30 + 90 [°C]	
Fluid compatibility	Mineral oils	
	Synthetic fluids	
Seals	Buna	
Weight	0,230 ÷ 0,570 [Kg]	

CAP



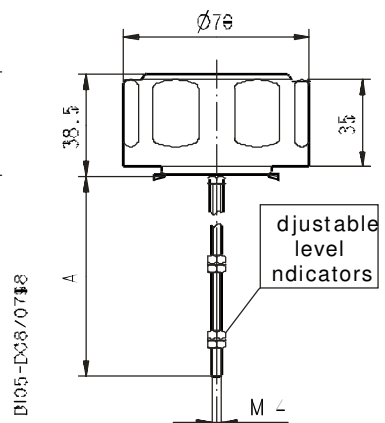
Version with chain available

CAP WITH LOCKING LUG



Cap with dipstick code	A
	mm
M	200
N	400
P	630

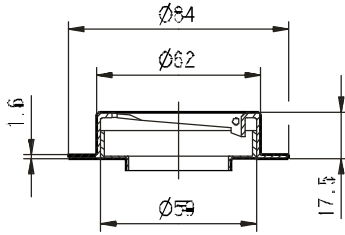
CAP WITH DIPSTICK



It does not allow the using with the filtering basket.

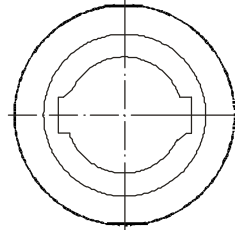
Replaces: 07.93

MOUNTING FLANGE



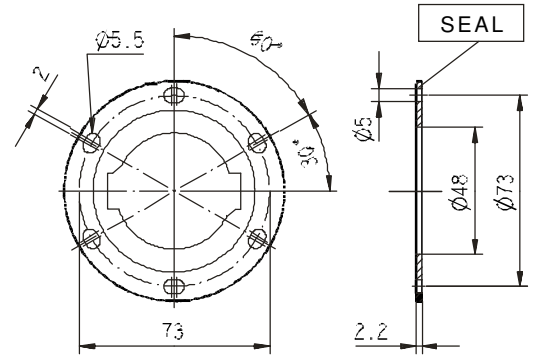
WELD-ON MOUNTING

Hole tank Ø 42



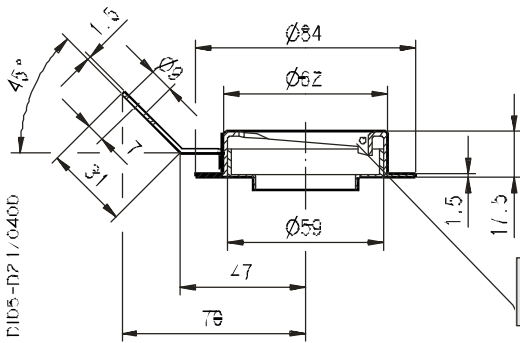
MOUNTING WITH SCREWS

Hole tank Ø 42



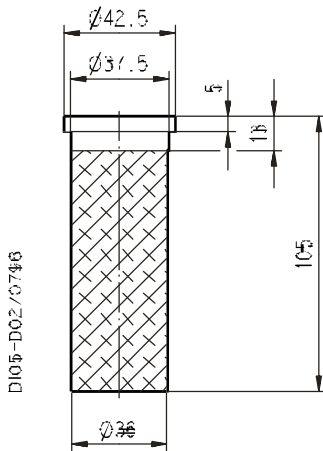
Furnished with 6 screws M5x12 UNI 6107 and seal

MOUNTING FLANGE WITH LOCKING LUG

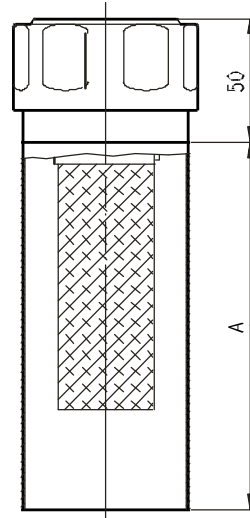


Arranged for chain

FILTERING BASKET

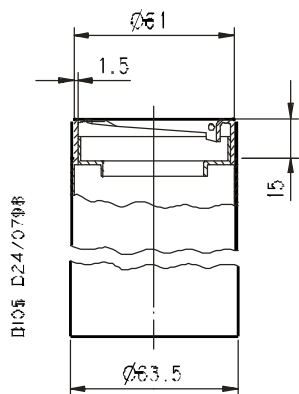


D105 D20/0338



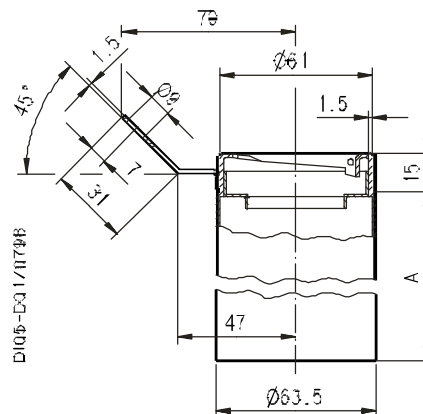
Extension code	A
	mm
15	40
20	65
25	80
30	135

FLANGE WITH EXTENSION WELD-ON MOUNTING



D105 D24/0798

FLANGE WITH EXTENSION AND LOCKING LUG WELD-ON MOUNTING



D105 D31/1178

Hole tank Ø 64

D105-002 - 02/04.00

HOW TO ORDER

1 2 3 4 5 6 7 8 9

HB 70 – A – 8 – L – 2 – 15 – G – 2 – R

1	Type	CODE
	Filler breather filters	HB 50
	Filler breather filters	HB 70

2	Cap features	CODE
	10 m] Air filter	A
	40 m] Air filter	B

3	Pressurization valve	CODE
	None	8
	With pressurization valve: 0,4 bar ①	9

4	Dipstick	CODE
	None	L
	With dipstick height (200 mm) ① - ②	M
	With dipstick height (400 mm) ① - ②	N
	With dipstick height (630 mm) ① - ②	P

5	Arrangements	CODE
	None	1
	Arranged for chain	2
	Arranged for safety locking	3

6	Mounting flange	CODE
	Mounting with screws	05
	Weld-on mounting	10
	Extension to weld h= 40 mm ①	15
	Extension to weld h= 65 mm ①	20
	Extension to weld h= 80 mm ①	25
	Extension to weld h= 135 mm ①	30

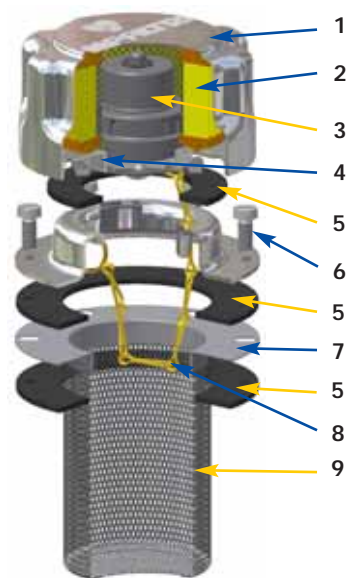
7	Filtering basket	CODE
	None ①	G
	With basket (obligatory for HB 50)	H

8	Flange arrangements	CODE
	None	1
	Arranged for chain	2
	Arranged for locking	3

9	Safety elements	CODE
	None	R
	With safety element	S

① ONLY FOR HB 70 ONLY

② VERSIONS M - N - P DO NOT ALLOW THE MOUNTING WITH THE FILTERING BASKET



TA80 B/D (Matières)

- 1 - Couvrecl: Acier chromé
- 2 - Filtre à air: Papier imprégné
- 3 - Clapet de pressurisation:
Corps: Nylon
Couvercle de fond-disque: Acier zingué
- 4 - Bride et ailettes anti-projection: Acier zingué
- 5 - Joints: Liège
- 6 - Vis et rondelles: Acier zingué
- 7 - Bride: Acier zingué
- 8 - Chaînette, anneau: Laiton
- 9 - Panier TA80B: Acier zingué

Débit avec Δp : 0,02 bar

Filtration	l/min
3 μ m	450
10 μ m	550

Poids

Panier L 80 mm: 0,330 Kg
Panier L 150 mm: 0,350 Kg

TA 80 B

Raccord à baïonnette
Panier fixe



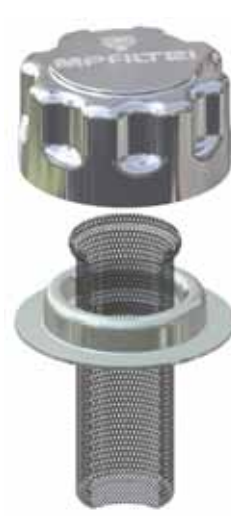
TA 80 B

Raccord à baïonnette
avec porte-cadenas



TA 80 D

Raccord à baïonnette
Panier amovible



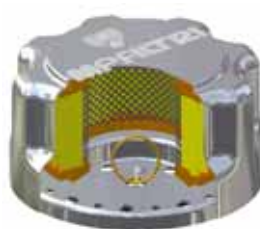
TA80B00....P01

Raccord à baïonnette
Bouchon fermé sans
élément filtrant



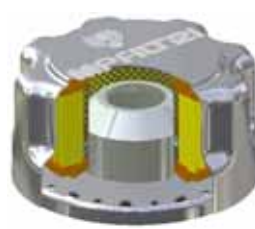
TA80B10....P01

Raccord à baïonnette
Bouchon avec
élément filtrant



TA80B03.9..P01

Raccord à baïonnette
Bouchon avec ailettes
anti-projection et
élément filtrant

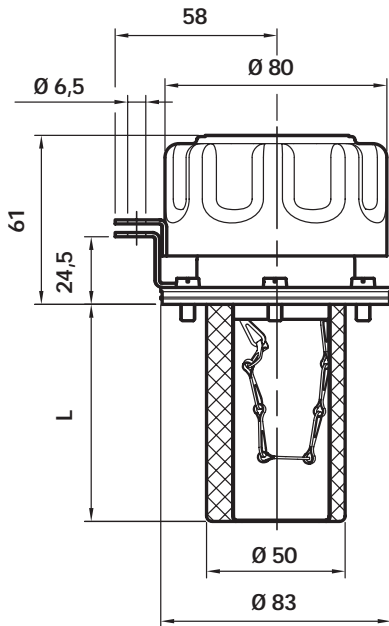


TA80B10.1..P01

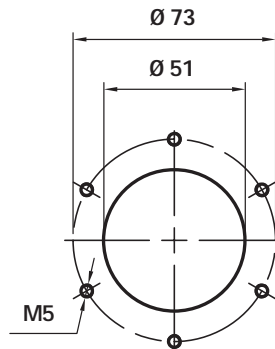
Raccord à baïonnette
Bouchon avec clapet de
pressurisation et
élément filtrant



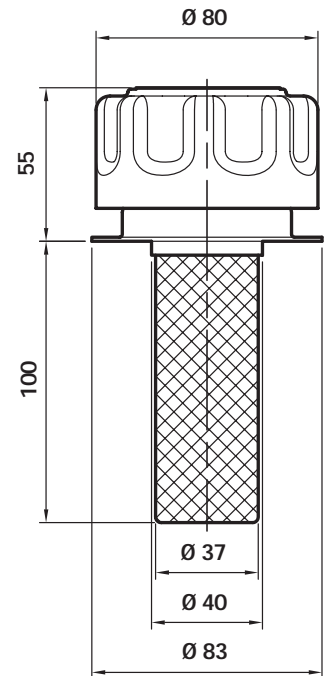
Raccord à baïonnette



Perçage du réservoir



Bride à souder

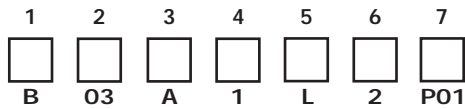


Codification commande

Bouchons série

TA80

Exemple: TA80



1 - Raccordement au réservoir

- B Bride avec raccord à baïonnette
- D Bride à souder

2 - Élément filtrant

- 00 Sans filtre (Bouchon fermé)
- 03 3 µm
- 10 10 µm

3 - Joints

- A NBR
- B Liège

4 - Clapets

- 0 Sans
- 1 Clapet de pressurisation 0,3 bar (uniquement avec joints NBR)
- 2 Clapet de pressurisation 0,7 bar (uniquement avec joints NBR)
- 9 Ailettes anti-projection (uniquement avec élément filtrant 3 µm)

5 - Variantes

- 0 Standard
- L Avec porte-cadenas (versions B)

6 - Panier

- 0 Sans panier
- 1 L= 80 mm (versions B)
- 2 L= 150 mm (versions B)
- 3 L= 100 mm (versions D)

7 - Options

- P01 MP Filtres standard

Filler Breather Assemblies

Features

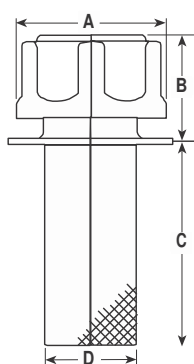
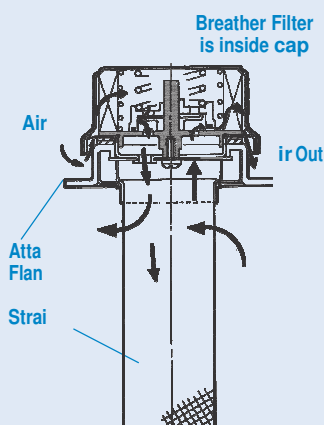
Removable 500µm mesh strainer.
(Except model P171848, which has a non-removable strainer.)

10µm air breather/filter.

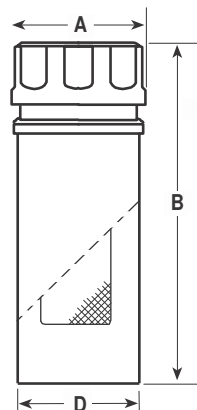
Models P171855 & P171848 include drilled flanges with attaching screws.

How They Work

As fluid levels rise and fall inside the reservoir, air flows in and out through the strainer and breather as shown below. The breather filter inside the cap removes contaminants as small as 10µm from the air to keep airborne contaminant from entering the fluid. The strainer removes large particles from fluid as it is added to the reservoir.



P171848
P171855
P171856



P171859
P171860

Filler Breather Specifications

Part No.	FLANGE SPECIFICATIONS				Flow (gpm/lpm)	FILLER BREATHER SPECIFICATIONS			
	Outer Dia. (in./mm)	No. of Holes	Hole Dia. (in./mm)	Bolt Circle		A (in./mm)	B (in./mm)	C (in./mm)	D (in./mm)
P171848	2.01/51	3	.22/5.5	2.00/51	70/270	1.81/45	1.38/35	2.48/63	1.1/28
P171855	3.31/84	6	.22/5.5	2.88/73	124/470	2.76/70	1.81/46	3.94/100	1.5/38
P171856	3.31/84	n/a	n/a		124/470	2.76/70	1.81/46	3.94/100	1.15/38
P171859		n/a- weldable			124/470	2.76/70	7.09/180	2.50/64	
P171860 *		n/a- weldable			124/470	2.76/70	7.09/180	2.50/64	

* For pressurized reservoirs

Filler Cap Only (Replacement)

P173292 – fits P171855, P171856, P171859

P173364 for pressurized reservoir – fits P171860