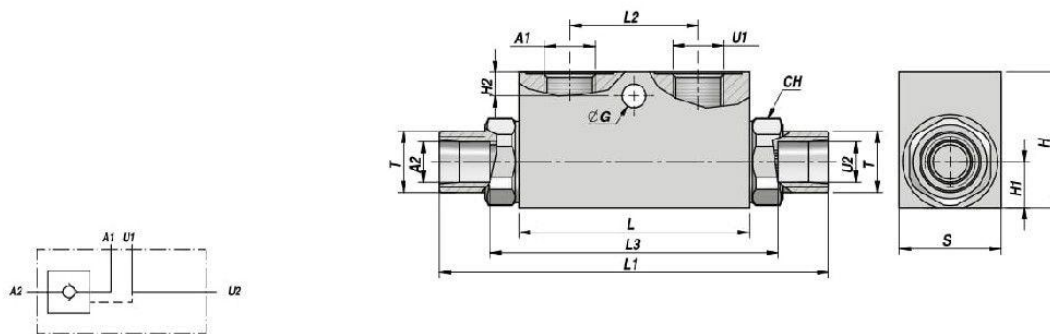
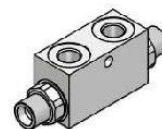


CLAPET ANTI-RETOUR PILOTE DIN 2353 (ETANCHEITE PAR CONE)  
PILOT OPERATED CHECK VALVE DIN 2353 (POPPET TYPE)

SIMPLE EFFET  
SINGLE ACTING

VRSE-AZ...FF



SANS ECROU ET BAGUE DE SERRAGE  
WITHOUT NUT AND CUTTING RING

Code Code	A1 - U1 BSP	A2 - U2	T	Q MAX l/min	P MAX bar	PILOT RATIO	Type Type	L	L1	L2	L3	H1	H2	ØG	CH	H	S	kg
VSG321.F05454 <b>NEW!</b>	1/4"	Ø10	M16x1.5	20	350	1:4.5	VRSE-AZ 005 FF	68	115	38	86	13	7	7.0	24	40	30	0,59
VSG321.F10454	1/4"	Ø12	M18x1.5	30	350	1:4.5	VRSE-AZ 010 FF	68	115	38	86	13	7	7.0	24	40	30	0,62
VSG321.F14454 <b>NEW!</b>	3/8"	Ø10	M16x1.5	20	350	1:4.5	VRSE-AZ 014 FF	68	115	38	86	13	7	7.0	24	40	30	0,58
VSG321.F15454	3/8"	Ø12	M18x1.5	30	350	1:4.5	VRSE-AZ 015 FF	68	115	38	86	13	7	7.0	24	40	30	0,61
VSG321.F20404	3/8"	Ø15	M22x1.5	50	300	1:4	VRSE-AZ 020 FF	80	140	40	108	16	15	8.5	27	50	30	0,88
VSG321.F25404	1/2"	Ø15	M22x1.5	50	300	1:4	VRSE-AZ 025 FF	80	140	40	108	16	15	8.5	27	50	30	0,82
VSG321.F30404	1/2"	Ø18	M26x1.5	80	300	1:4	VRSE-AZ 030 FF	90	152	40	133	20	15	8.5	30	60	40	1,54

Pression d'ouverture - Opening pressure : bar 0,5 - 4 (standard) - 8

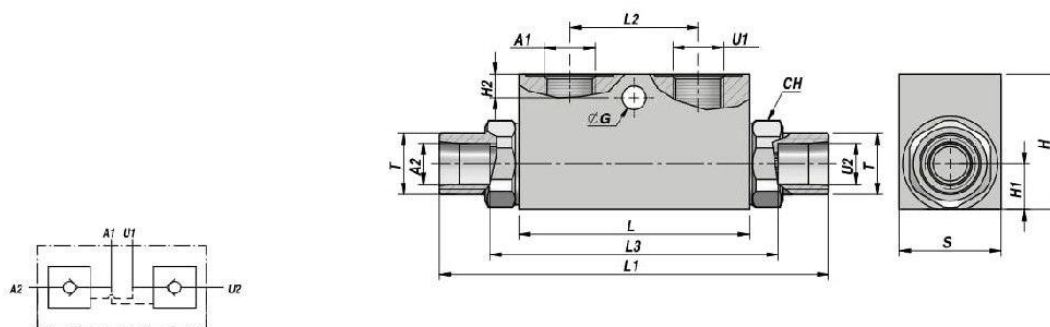
MATERIEL CORPS : ACIER  
BODY MATERIAL : STEEL

MONTAGE SUR VERIN  
CYLINDER MOUNTING

CLAPET ANTI-RETOUR PILOTE DIN 2353 (ETANCHEITE PAR CONE)  
PILOT OPERATED CHECK VALVE DIN 2353 (POPPET TYPE)

DOUBLE EFFET  
DOUBLE ACTING

VRDE-AZ...FF




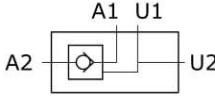
SANS ECROU ET BAGUE DE SERRAGE  
WITHOUT NUT AND CUTTING RING

Code Code	A1 - U1 BSP	A2 - U2	T	Q MAX l/min	P MAX bar	PILOT RATIO	Type Type	L	L1	L2	L3	H1	H2	ØG	CH	H	S	kg
VSG322.F05454 <b>NEW!</b>	1/4"	Ø10	M16x1.5	20	350	1:4.5	VRDE-AZ 005 FF	68	115	38	86	13	7	7.0	24	40	30	0,59
VSG322.F10454	1/4"	Ø12	M18x1.5	30	350	1:4.5	VRDE-AZ 010 FF	68	115	38	86	13	7	7.0	24	40	30	0,62
VSG322.F14454 <b>NEW!</b>	3/8"	Ø10	M16x1.5	20	350	1:4.5	VRDE-AZ 014 FF	68	115	38	86	13	7	7.0	24	40	30	0,58
VSG322.F15454	3/8"	Ø12	M18x1.5	30	350	1:4.5	VRDE-AZ 015 FF	68	115	38	86	13	7	7.0	24	40	30	0,61
VSG322.F20404	3/8"	Ø15	M22x1.5	50	300	1:4	VRDE-AZ 020 FF	80	140	40	108	16	15	8.5	27	50	30	0,88
VSG322.F25404	1/2"	Ø15	M22x1.5	50	300	1:4	VRDE-AZ 025 FF	80	140	40	108	16	15	8.5	27	50	30	0,82
VSG322.F30404	1/2"	Ø18	M26x1.5	80	300	1:4	VRDE-AZ 030 FF	90	152	40	133	20	15	8.5	30	60	40	1,54

Pression d'ouverture - Opening pressure : bar 0,5 - 4 (standard) - 8

MATERIEL CORPS : ACIER  
BODY MATERIAL : STEEL

MONTAGE SUR VERIN  
CYLINDER MOUNTING

<b>G45/0</b>	<b>PRODOTTO - PRODUCT</b> 	<b>SCHEMA - SCHEMA</b> 	<b>VRSE DIN 2353</b>  <b>VALVOLA DI RITEGNO DIN 2353 SEMPLICE EFFETTO PILOTATA SINGLE PILOT OPERATED CHECK VALVE DIN 2353</b>
--------------	--	---	---

**APPLICAZIONE**

Sono utilizzate per bloccare in posizione un attuatore e renderlo insensibile alle forze esterne. Il passaggio del flusso in senso inverso avviene tramite un comando pilota. Per la loro praticità sono particolarmente indicate per il montaggio diretto sui cilindri oleodinamici.

**MONTAGGIO**

Collegare la bocca dell'attuatore da controllare con A2 e la sua alimentazione con A1. L'altra bocca dell'attuatore ed il comando pilota possono essere collegati indifferentemente con U1 e U2. Le bocche A2 ed U2 devono utilizzare gli appositi raccordi.

**FUNZIONAMENTO**

Il fluido passa libero da A1 verso A2 alimentando l'attuatore ad esso collegato. Per permettere il passaggio del fluido da A2 verso A1 si deve alimentare indifferentemente la bocca U1 o U2.

**A RICHIESTA**

Corpo in alluminio - Molle 0,5 Bar - Molle 8 Bar - Tenuta in Viton - Senza dadi ed anelli - Senza guarnizione OR sul pilota - Kit montaggio al cilindro come mostrato nella Scheda Z20/0 - Marcatura personalizzabile.

**NOTE COSTRUTTIVE**

Corpo in acciaio zincato - Componenti in acciaio trattati termicamente - Tenuta OR sul pilota - Completa con dadi ed anelli - Non ammette trafilementi

**APPLICATION**

They are used to hold and block an actuator in position until pilot pressure is applied. Assembled directly on hydraulic cylinders.

**INSTALLATION**

Connect the actuator port to be controlled to A2 and the pressure flow to A1. U1 and U2 ports can be connected to pilot pressure in the same way. A2 and U2 must be connected to their suitable fittings.

**OPERATION**

Flow from A1 port to A2 port goes to actuator port and is blocked in the opposite direction. When pilot pressure is applied to U1 or U2 ports the valve allows the return flow from A2 to A1 ports.

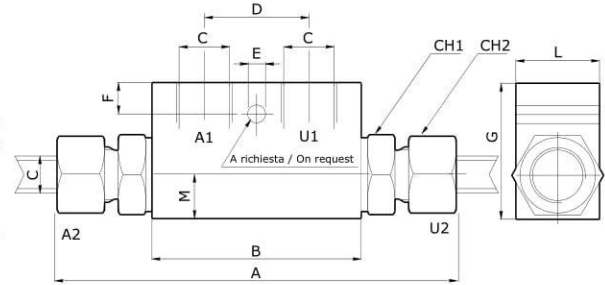
**OPTIONAL**

Aluminium body - Spring set at 0.5 or 8 bar - Viton seals - Without nut and cutting nut - Without seal on pilot piston - Fittings kit for hydraulic cylinder as shown in Z20/0 card - Custom marking.

**FEATURES**

Steel body - Zinc plated steel body - No leakage - Hardened internal components - O-ring seal on pilot piston - With nut and cutting ring.

CARATTERISTICHE - HYDRAULIC FEATURES							
Dimensione Dimension	005	0015	01	015	02	025	03
Pressione max Max pressure (bar)	350	350	350	350	300	300	300
Portata max Max Flow (l/min)	20	20	30	30	50	50	80
Rapporto d'apertura Pilot Ratio	1:4.5	1:4.5	1:4.5	1:4.5	1:4	1:4	1:4
Pressione d'apertura Cracking Pressure (bar)	4	4	4	4	4	4	4



**DIMENSIONI E PESI - EXTERNAL DIMENSIONS AND WEIGHTS**

Dimensione Dimension	A	B max	C gas	A2-U2 mm	C npt	A2-U2 mm	C sae	A2-U2 mm	D	E	F	G	L	M	CH1	CH2	K	Peso Weight (kg)
005	139	68	1/4	10	1/4	10	-	-	38	7	7	40	30	13	24	20	86	0.64
0015	139	68	3/8	10	3/8	10	-	-	38	7	7	40	30	13	24	20	86	0.63
01	138	68	1/4	12	1/4	12	-	-	38	7	7	40	30	13	24	22	86	0.67
015	138	68	3/8	12	3/8	12	9/16-18	12	38	7	7	40	30	13	24	22	86	0.66
02	166	80	3/8	15	3/8	15	3/4-16	15	40	8.5	15	50	30	16	27	27	108	0.97
025	166	80	1/2	15	1/2	15	7/8-14	15	40	8.5	15	50	30	16	27	27	108	0.91
03	180	90	1/2	18	1/2	18	7/8-14	18	40	8.5	15	60	40	20	30	32	133	1.67


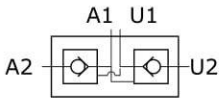
**CODICE ORDINAZIONE - ORDERING CODE**

<b>VRSE</b>	<b>A</b>	<b>N</b>	<b>S</b>	<b>FF</b>
Dimensione - Dimension				
Tipo Type	A1-U1 A2-U2	A1-U1 A2-U2	A1-U1 A2-U2	
	GAS mm	NPT mm	SAE mm	
005	1/4 10	1/4 10	- -	
0015	3/8 10	3/8 10	- -	
01	1/4 12	1/4 12	- -	
015	3/8 12	3/8 12	9/16-18 12	
02	3/8 15	3/8 15	3/4-16 15	
025	1/2 15	1/2 15	7/8-14 15	
03	1/2 18	1/2 18	7/8-14 18	
Tipo Filetto Port type				
	GAS	NPT	SAE	
Fissaggio Fixing Holes				
	Senza foro fissaggio Without mounting hole			
	Con foro fissaggio With mounting hole			

**ESEMPIO ORDINAZIONE - ORDERING CODE EXAMPLE**

<b>VRSE 015 A</b>	VRSE - Dimensione 015 - Filetto 3/8 GAS - A2-U2 mm 12 - Senza foro fissaggio / VRSE - 015 Dimension - 3/8 GAS Port thread - A2-U2 mm 12 - Without mounting hole
<b>VRSE 02 A N</b>	VRSE - Dimensione 02 - Filetto 3/8 NPT - A2-U2 mm 15 - Senza foro fissaggio / VRSE - 02 Dimension - 3/8 NPT Port thread - A2-U2 mm 15 - Without mounting hole



<b>G55/0</b>	<b>PRODOTTO - PRODUCT</b> 	<b>SCHEMA - SCHEMA</b> 	<b>VRDE DIN 2353</b>  <b>VALVOLA DI RITEGNO DIN 2353 DOPPIO EFFETTO PILOTATA DUAL PILOT OPERATED CHECK VALVE DIN 2353</b>
--------------	--	---	---

**APPLICAZIONE**

Sono utilizzate per bloccare in posizione un attuatore in entrambi i sensi e renderlo insensibile alle forze esterne. Il passaggio del flusso in senso inverso avviene tramite il comando pilota. Per la loro praticità sono particolarmente indicate per il montaggio diretto sui cilindri oleodinamici.

**MONTAGGIO**

Collegare le bocche A2 e U2 all'attuatore tramite gli appositi raccordi e le bocche A1 e U1 all'alimentazione.

**FUNZIONAMENTO**

Il fluido passa libero da A1 verso A2 alimentando la bocca dell'attuatore ad esso collegata. Contemporaneamente il pistoncino pilota apre il ritegno sulla bocca U2 permettendo il ritorno del flusso libero verso U1. Alimentando U1 si ottiene l'operazione contraria.

**A RICHIESTA**

Corpo in alluminio - Molle 0,5 Bar - Molle 8 Bar - Tenuta in Viton - Senza guarnizione OR sul pilota - Senza dadi ed anelli - Kit montaggio al cilindro come mostrato nella Scheda Z20/0 - Marcatura personalizzabile.

**NOTE COSTRUTTIVE**

Corpo in acciaio zincato - Componenti in acciaio trattati termicamente - Tenuta OR sul pilota - Completa con dadi ed anelli - Non ammette trafilementi.

**APPLICATION**

They are used to hold and block an actuator in position until pilot pressure is applied. They can be easily assembled on hydraulic cylinders directly.

**INSTALLATION**

Connect the actuator ports to be controlled to A2 and U2 ports with their suitable fittings and the pressure flow to A1 and U1.

**OPERATION**

This valve allows flow from A1 port to A2 port and feeds the actuator port connected to it. At the same time, the pressure flow in A1 opens the relief valve on U2 port, thus allowing the flow return towards U1. The opposite situation occurs when pressure flow passes from U1 port to U2 port.

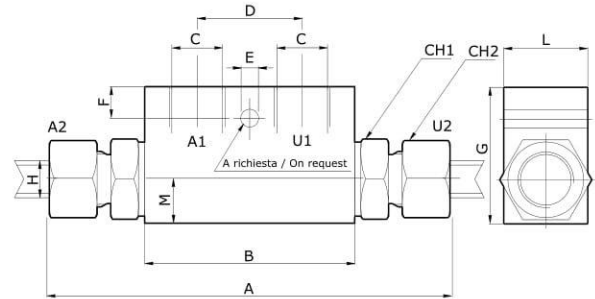
**OPTIONAL**

Aluminium body - Spring set at 0.5 or 8 bar - Viton seals - Without o-ring seal on pilot piston - Without nut and cutting nut - Special fittings kit for hydraulic cylinder as shown in Z20/0 card - Custom marking.

**FEATURES**

Steel body - Zinc plated - Hardened internal components - O-ring seal on pilot piston - With nut and cutting ring - No leakage.

CARATTERISTICHE - HYDRAULIC FEATURES							
Dimensione Dimension	005	0015	01	015	02	025	03
Pressione max Max pressure (bar)	350	350	350	350	300	300	300
Portata max Max Flow (l/min)	20	20	30	30	50	50	80
Rapporto d'apertura Pilot Ratio	1:4.5	1:4.5	1:4.5	1:4.5	1:4	1:4	1:4
Pressione d'apertura Cracking Pressure (bar)	4	4	4	4	4	4	4



**DIMENSIONI E PESI - EXTERNAL DIMENSIONS AND WEIGHTS**

Dimensione Dimension	A	B max	C gas	A2-U2 mm	C npt	A2-U2 mm	C sae	A2-U2 mm	D	E	F	G	L	M	CH1	CH2	K	Peso Weight (kg)
005	139	68	1/4	10	1/4	10	-	-	38	7	7	40	30	13	24	20	86	0.65
0015	139	68	3/8	10	3/8	10	-	-	38	7	7	40	30	13	24	20	86	0.64
01	138	68	1/4	12	1/4	12	-	-	38	7	7	40	30	13	24	22	86	0.67
015	138	68	3/8	12	3/8	12	9/16-18	12	38	7	7	40	30	13	24	22	86	0.66
02	166	80	3/8	15	3/8	15	3/4-16	15	40	8.5	15	50	30	16	27	27	108	0.97
025	166	80	1/2	15	1/2	15	7/8-14	15	40	8.5	15	50	30	16	27	27	108	0.91
03	180	90	1/2	18	1/2	18	7/8-14	18	40	8.5	15	60	40	20	30	32	133	1.67

**CODICE ORDINAZIONE - ORDERING CODE**

<b>VRDE</b>	<b>A</b>	<b>F</b>	<b>S</b>
Dimensione - Dimension			
Tipo Type	A1-U1 A2-U2	A1-U1 A2-U2	A1-U1 A2-U2
	GAS mm	NPT mm	SAE mm
005	1/4 10	1/4 10	- -
0015	3/8 10	3/8 10	- -
01	1/4 12	1/4 12	- -
015	3/8 12	3/8 12	9/16-18 12
02	3/8 15	3/8 15	3/4-16 15
025	1/2 15	1/2 15	7/8-14 15
03	1/2 18	1/2 18	7/8-14 18
Tipo Filetto Port type			
	GAS		
N	NPT		
S	SAE		
Fissaggio Fixing Holes			
	Senza foro fissaggio Without mounting hole		
FF	Con foro fissaggio With mounting hole		

**ESEMPIO ORDINAZIONE - ORDERING CODE EXAMPLE**

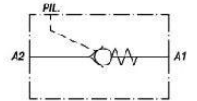
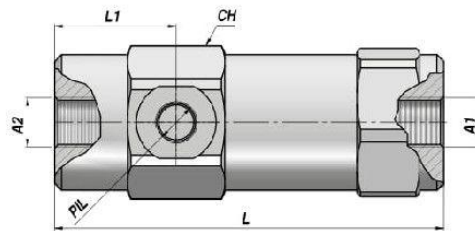
<b>VRDE 015 A</b>	VRDE - Dimensione 015 - Tipo Filetto 3/8 GAS - A2-U2 mm 12 / VRDE - 015 Dimension - 3/8 GAS Port thread - A2-U2 mm 12 - Without mounting hole
<b>VRDE 02 A N</b>	VRDE - Dimensione 02 - Tipo Filetto 3/8 NPT - A2-U2 mm 15 / VRDE - 02 Dimension - 3/8 NPT Port thread - A2-U2 mm 15 - Without mounting hole

# CLAPETS ANTI-RETOUR PILOTES - PILOT OPERATED CHECK VALVES

## VBPS

SIMPLE EFFET  
SINGLE ACTING

CLAPET ANTI-RETOUR PILOTE (ETANCHEITE PAR CONE)  
PILOT OPERATED CHECK VALVE (POPPET TYPE)



Code Code	A1 - A2 BSP	PIL BSP	Q MAX l/min	P MAX bar	PILOT RATIO	Type Type	L	L1	CH	kg
VSG341.109500	1/4"	1/4"	25	350	1:9.5	VBPS 010	103.0	32.5	36	0,69
VSG341.206000	3/8"	1/4"	40	350	1:6	VBPS 020	111.0	35.0	40	0,93
VSG341.304300	1/2"	1/4"	60	350	1:4.3	VBPS 030	122.0	38.0	42	1,08
VSG341.404000	3/4"	1/4"	90	300	1:4.4	VBPS 040	145.5	44.5	55	2,32
VSG341.503500	1"	1/4"	130	260	1:3.5	VBPS 050	164.0	44.5	55	2,36

Pression d'ouverture - Opening pressure : bar 1 (standard) - 4 - 8

MATERIEL CORPS : ACIER  
BODY MATERIAL : STEEL

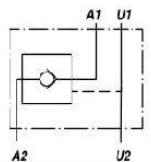
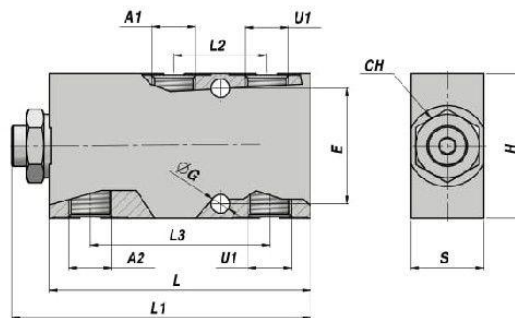
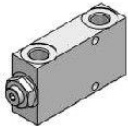
MONTAGE EN LIGNE  
LINE MOUNTING

## VPSE

NEW!

SIMPLE EFFET  
SINGLE ACTING

CLAPET ANTI-RETOUR PILOTE (ETANCHEITE PAR CONE)  
PILOT OPERATED CHECK VALVE (POPPET TYPE)


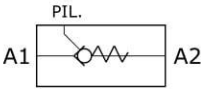


Code Code	A1 - U1 BSP	A2 - U2 BSP	Q MAX l/min	P MAX bar	PILOT RATIO	Type Type	L	L1	L2	L3	ØG	E	H	S	kg
VAG350.207004	3/8"	3/8"	35	350	1:7	VPSE 020	83	95	34	49	6.5	40	60	35	0,53
VAG350.257004	1/2"	1/2"	35	350	1:7	VPSE 025	83	95	34	49	6.5	40	60	35	0,49

Pression d'ouverture - Opening pressure : bar 0,5 - 4 (standard) - 8

MATERIEL CORPS : ALUMINIUM  
BODY MATERIAL : ALUMINIUM

MONTAGE EN LIGNE  
LINE MOUNTING

SCHEDA - CARD	PRODOTTO - PRODUCT	SCHEMA - SCHEMA	VBPS
<b>G60/0</b>			<b>VALVOLA DI BLOCCO PILOTATA SEMPLICE EFFETTO IN LINEA SINGLE PILOT OPERATED CHECK VALVE LINE TYPE</b>

**APPLICAZIONE**

Sono utilizzate per bloccare in posizione un attuatore in un solo senso e renderlo insensibile alle forze esterne. Il passaggio del flusso in senso inverso avviene tramite un comando pilota.

**MONTAGGIO**

Collegare la bocca dell'attuatore da controllare con A1 e la sua alimentazione con A2. La bocca Pil deve essere collegata con il comando pilota.

**FUNZIONAMENTO**

Il fluido passa libero da A2 verso A1 alimentando la bocca ad essa collegata. Per permettere il passaggio del fluido da A1 verso A2 si deve alimentare la bocca Pil.

**A RICHIESTA**

Molle 4 Bar - Molle 8 Bar - Senza tenuta OR sul pilota - Tenuta in Viton - Marcatura personalizzabile.

**NOTE COSTRUTTIVE**

Corpo in acciaio zincato - Componenti interni trattati termicamente - Tenuta con otturatore - Non accetta trafilemento.

**APPLICATION**

This valve blocks the actuator in position until pilot pressure is applied so that it will not be affected by external forces. When pilot pressure is applied, it allows the return flow.

**INSTALLATION**

Connect the actuator port to control to A1 valve port and its pressure flow to A2. The PIL port must be connected with pilot pressure.

**OPERATION**

This valve allows flow from A2 port to A1 port and stops the flow in the opposite direction. When pilot pressure is applied to PIL port it allows the return flow from A1 to A2.

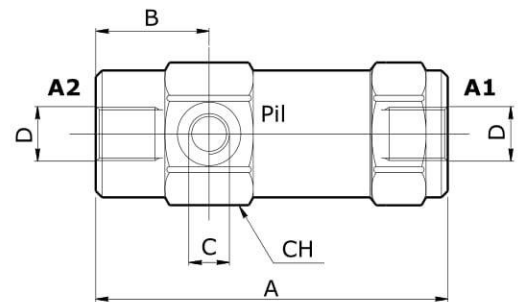
**OPTIONAL**

4 Or 8 Bar spring set - Without O-ring seal on pilot piston - Viton seals - Custom marking.

**FEATURES**

Steel body - Zinc plated - Hardened inside components - O-ring seal on pilot piston - No leakage.

CARATTERISTICHE - HYDRAULIC FEATURES						
Dimensione Dimension	01	015	02	03	04	05
Pressione max Max pressure (bar)	350	350	350	350	300	260
Portata max Max Flow (l/min)	25	25	40	60	90	130
Rapporto di pilotaggio Pilot Ratio	1:9.5	1:9.5	1:6	1:4.3	1:4.4	1:3.5
Pressione d'apertura Cracking Pressure (bar)	1	1	1	1	1	1



**DIMENSIONI E PESI - EXTERNAL DIMENSIONS AND WEIGHTS**

Dimensione Dimension	A gas	B gas	C gas	D gas	A npt	B npt	C npt	D npt	A sae	B sae	C sae	D sae	CH	Peso Weight (kg)
<b>01</b>	103	32.5	1/4	1/4	107.5	35.5	1/4	1/4	107.5	35.5	-	-	36	0.69
<b>015</b>	103	33	-	-	-	-	-	-	-	-	7/16-20	9/16-18	36	0.69
<b>02</b>	111	35	1/4	3/8	113	37	1/4	3/8	115	37	7/16-20	3/4-16	40	0.93
<b>03</b>	122	38	1/4	1/2	123	39	1/4	1/2	125.5	39	7/16-20	7/8-14	42	1.08
<b>04</b>	145.5	44.5	1/4	3/4	156.5	45.5	1/4	3/4	157.5	45.5	7/16-20	1 1/16-12	55	2.316
<b>05</b>	164	44.5	1/4	1	166.5	45.5	1/4	1	167.5	45.5	7/16-20	1 5/16-12	55	2.355


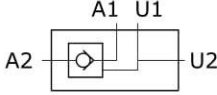
**CODICE ORDINAZIONE - ORDERING CODE**

VBPS		Dimensione - Dimension			Tipo Filetto Port type	
Tipo-Type		GAS	NPT	SAE		
<b>01</b>		1/4	1/4	-		GAS
<b>015</b>		-	-	9/16-18		GAS
<b>02</b>		3/8	3/8	3/4-16	<b>N</b>	NPT
<b>03</b>		1/2	1/2	7/8-14	<b>S</b>	SAE
<b>04</b>		3/4	3/4	1 1/16-12		
<b>05</b>		1	1	1 5/16-12		

**ESEMPIO ORDINAZIONE - ORDERING CODE EXAMPLE**

<b>VBPS 03</b>	VBPS - Dimensione 03 - Tipo Filetto 1/2 GAS / VBPS - 03 Dimension - 1/2 GAS Port thread
----------------	---



SCHEDA - CARD	PRODOTTO - PRODUCT	SCHEMA - SCHEMA	VPSE
<b>G24/0</b>			<b>VALVOLA DI RITEGNO SEMPLICE EFFETTO PILOTATA SINGLE PILOT OPERATED CHECK VALVE</b>

**APPLICAZIONE**

Sono utilizzate per bloccare in posizione un attuatore e renderlo insensibile alle forze esterne. Il passaggio del flusso in senso inverso avviene tramite un comando pilota.

**MONTAGGIO**

Collegare la bocca dell'attuatore da controllare con A2 e la sua alimentazione con A1. L'altra bocca dell'attuatore ed il comando pilota possono essere collegati indifferentemente con U1 e U2.

**FUNZIONAMENTO**

Il fluido passa libero da A1 verso A2 alimentando l'attuatore ad esso collegato. Per permettere il passaggio del fluido da A2 verso A1 si deve alimentare indifferentemente la bocca U1 o U2.

**A RICHIESTA**

Corpo in acciaio zincato - Molle 0,5 Bar - Molle 8 Bar - Tenuta in Viton - Senza guarnizione OR sul pilota - Marcatura personalizzabile.

**NOTE COSTRUTTIVE**

Corpo in alluminio - Componenti in acciaio trattati termicamente - Con guarnizione OR sul pilota - Non ammette trafilamenti.

**APPLICATION**

This valve is used to block the actuator in position until pilot pressure is applied.

**INSTALLATION**

Connect the actuator port to control to A2 valve port and its pressure flow to A1. The second port of the actuator and the pilot pressure can be connected either to U1 or U2.

**OPERATION**

This valve allows flow from A1 port to A2 port and blocks flow in the opposite direction. When pilot pressure is applied to U1 or U2 ports it allows the return flow from A2 port to A1 port.

**OPTIONAL**

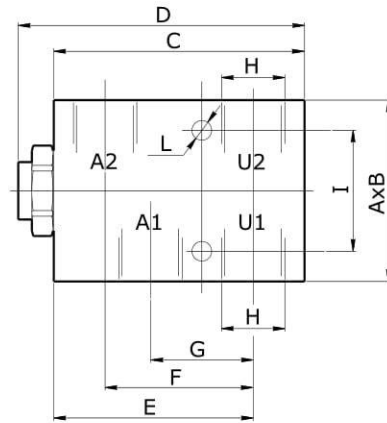
Zinc plated steel body - Viton seals - Without O-ring seal on pilot piston - Custom marking.

**FEATURES**

Aluminium body - Zinc plated - Hardened internal components - O-ring seal on pilot piston - No leakage.

**CARATTERISTICHE - HYDRAULIC FEATURES**

Dimensione <i>Dimension</i>	02	025
Pressione max <i>Max pressure (bar)</i>	350	350
Portata max <i>Max Flow (l/min)</i>	35	35
Rapporto d'apertura <i>Pilot Ratio</i>	1:7	1:7
Pressione d'apertura <i>Cracking Pressure (bar)</i>	4	4



**DIMENSIONI E PESI - EXTERNAL DIMENSIONS AND WEIGHTS**

Dimensione <i>Dimension</i>	A	B	C	D	E	F	G	H gas	H npt	H sae	I	L	Peso <i>Weight (kg)</i>
<b>02</b>	60	35	83	95	66	49	34	3/8	3/8	3/4-16	40	6.5	0.53
<b>025</b>	60	35	83	95	66	49	34	1/2	1/2	7/8-14	40	6.5	0.49

**CODICE ORDINAZIONE - ORDERING CODE**

<b>VPSE</b>	-	-
Dimensione - Dimension		
Tipo-Type	GAS	NPT
<b>02</b>	3/8	3/8
<b>025</b>	1/2	1/2
Tipo Filetto Port type		
-	GAS	
<b>N</b>	NPT	
<b>S</b>	SAE	

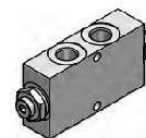
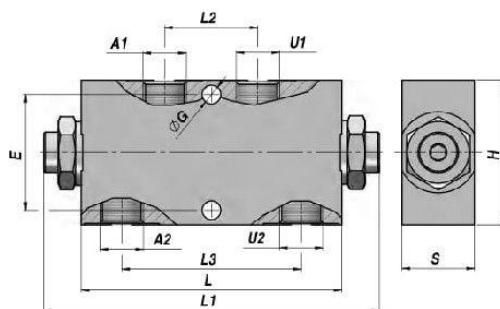
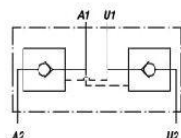
**ESEMPIO ORDINAZIONE - ORDERING CODE EXAMPLE**

<b>VPSE 025</b>	VPSE - Dimensione 025 - Tipo Filetto 1/2 GAS / VPSE - 025 Dimension - 1/2 GAS Port thread
<b>VPSE 02 S</b>	VPSE - Dimensione 02 - Tipo Filetto 3/4-16 SAE / VPSE - 02 Dimension - 3/4-16 SAE Port thread

CLAPET ANTI-RETOUR PILOTE (ETANCHEITE PAR CONE)  
PILOT OPERATED CHECK VALVE (POPPET TYPE)

DOUBLE EFFET  
DOUBLE ACTING

VPDE



Code Code	A1 - U1 BSP	A2 - U2 BSP	Q MAX l/min	P MAX bar	PILOT RATIO	Type Type	L	L1	L2	L3	ØG	E	H	S	kg
VSG352.104004 **	1/4"	1/4"	20	350	1:4	VPDE 010	90	113	32	62	6.5	40	50	25	0,79
VSG352.154004 **	3/8"	3/8"	20	350	1:4	VPDE 015	90	113	32	62	6.5	40	50	25	0,76
VAG352.207004 *	3/8"	3/8"	35	350	1:7	VPDE 020	96	113	32	62	6.5	40	60	35	0,62
VAG352.257004 *	1/2"	1/2"	35	350	1:7	VPDE 025	96	113	32	62	6.5	40	60	35	0,60
VAG352.305004 *	1/2"	1/2"	50	300	1:5.2	VPDE 030	117	139	43	84	10.1	40	70	40	1,00

Pression d'ouverture - Opening pressure : bar 0,5 - 4 (standard) - 8

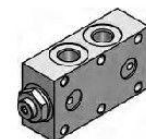
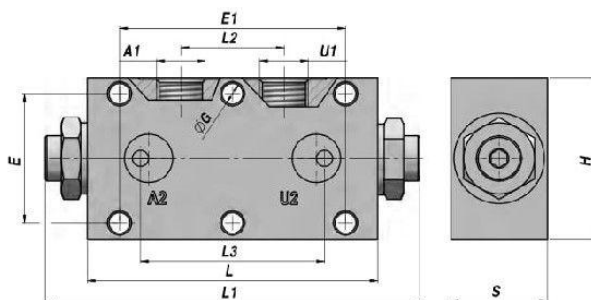
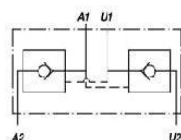
\*\* Etanchéité par sphère - Ball type

MATERIEL CORPS : ACIER /\* = ALUMINIUM MONTAGE EN LIGNE  
BODY MATERIAL : STEEL /\* = ALUMINIUM LINE MOUNTING

CLAPET ANTI-RETOUR PILOTE (ETANCHEITE PAR CONE)  
PILOT OPERATED CHECK VALVE (POPPET TYPE)

DOUBLE EFFET  
DOUBLE ACTING

VPDE/F


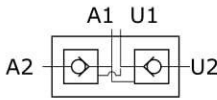


Code Code	A1 - U1 BSP	A2 - U2	Q MAX l/min	P MAX bar	PILOT RATIO	Type Type	L	L1	L2	L3	ØG	E	E1	H	S	kg
VAG353.104004 **	1/4"	Ø5	20	350	1:4	VPDE-F 010	90	113	32	52	6.5	40	70	50	30	0,43
VAG353.154004 **	3/8"	Ø5	20	350	1:4	VPDE-F 015	90	113	32	52	6.5	40	70	50	30	0,43
VAG353.207004 *	3/8"	Ø5	35	350	1:7	VPDE-F 020	96	113	32	62	6.5	40	70	60	35	0,60
VAG353.257004 *	1/2"	Ø5	35	350	1:7	VPDE-F 025	96	113	32	62	6.5	40	70	60	35	0,60

Pression d'ouverture - Opening pressure : bar 0,5 - 4 (standard) - 8

\*\* Etanchéité par sphère - Ball type

MATERIEL CORPS : ACIER /\* = ALUMINIUM FLASQUABLE  
BODY MATERIAL : STEEL /\* = ALUMINIUM FACE MOUNTING

SCHEDA - CARD	PRODOTTO - PRODUCT	SCHEMA - SCHEMA	VPDE
<b>G25/0</b>			<b>VALVOLA DI RITEGNO DOPPIO EFFETTO PILOTATA IN LINEA DUAL PILOT OPERATED CHECK VALVE LINE MOUNTING</b>

**APPLICAZIONE**

Sono utilizzate per bloccare in posizione un attuatore e renderlo insensibile alle forze esterne.

**MONTAGGIO**

Collegare le bocche A2 e U2 all'attuatore e le bocche A1 e U1 all'alimentazione.

**FUNZIONAMENTO**

Il fluido passa libero da A1 verso A2 alimentando la bocca dell'attuatore ad esso collegata. Contemporaneamente il pistoncino pilota apre il ritegno sulla bocca U2 permettendo il ritorno del flusso libero verso U1. Alimentando U1 si ottiene l'operazione contraria.

**A RICHIESTA**

Corpo in acciaio zincato - Molle 0,5 Bar - Molle 8 Bar - Tenuta in Viton - Senza guarnizione OR sul pilota - Marcatura personalizzabile.

**NOTE COSTRUTTIVE**

Collettore in acciaio dimensione 01 e 015 - Collettore in alluminio dimensione 02, 025 e 03 - Componenti interni trattati termicamente - Non ammette trafilementi. Otturatore conico, tranne versione 01 (sferico).

**APPLICATION**

They are used to hold and lock an actuator in position until pilot pressure is applied.

**INSTALLATION**

Connect A2 and U2 ports to the actuator ports, and connect A1 and U1 to the pressure flows.

**OPERATION**

This valve allows flow from A1 port to A2 port and feeds the actuator port connected to it. At the same time, the pressure flow in A1 opens the relief valve on U2 port, thus allowing the flow return towards U1. The opposite situation occurs when pressure flow passes from U1 port to U2 port.

**OPTIONAL**

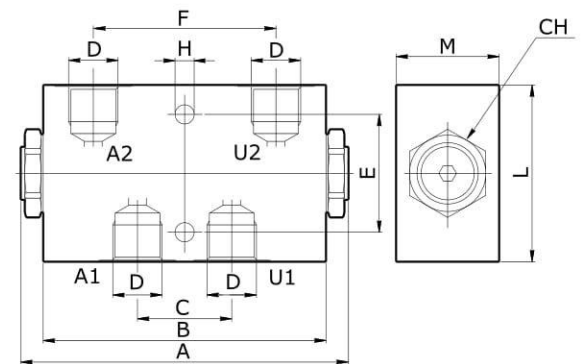
Zinc plated steel body - Spring set at 0.5 or 8 bar - Viton seals - Without o-ring seal on pilot piston - Custom marking.

**FEATURES**

Aluminium body: 02, 025 and 03 dimensions - Steel body: 01 and 015 dimensions - Hardened components - No leakage. Poppet except 01 version (spheric).

**CARATTERISTICHE - HYDRAULIC FEATURES**

Dimensione Dimension	01	015	02	025	03
Pressione max Max pressure (bar)	350	350	350	350	300
Portata max Max Flow (l/min)	20	20	35	35	50
Rapporto d'apertura Pilot Ratio	1:4	1:4	1:7	1:7	1:5.2
Pressione d'apertura Cracking Pressure (bar)	4	4	4	4	4



**DIMENSIONI E PESI - EXTERNAL DIMENSIONS AND WEIGHTS**

Dimensione Dimension	A	B	C	D gas	D npt	D sae	E	F	H	L	M	CH	Peso Weight (kg)
<b>01</b>	113	90	32	1/4	1/4	7/16-20	40	62	6.5	50	25	22	0.79
<b>015</b>	113	90	32	3/8	3/8	9/16-18	40	62	6.5	50	25	22	0.76
<b>02</b>	113	96	32	3/8	3/8	3/4-16	40	62	6.5	60	35	27	0.62
<b>025</b>	113	96	32	1/2	1/2	7/8-14	40	62	6.5	60	35	27	0.60
<b>03</b>	139	117	43	1/2	1/2	7/8-14	40	84	10.1	70	40	32	1.00


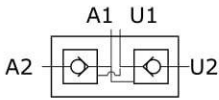
**CODICE ORDINAZIONE - ORDERING CODE**

<b>VPDE</b>	[ ]	[ ]	
Dimensione - Dimension			
Tipo-Type	GAS	NPT	SAE
<b>01</b>	1/4	1/4	7/16-20
<b>015</b>	3/8	3/8	9/16-18
<b>02</b>	3/8	3/8	3/4-16
<b>025</b>	1/2	1/2	7/8-14
<b>03</b>	1/2	1/2	7/8-14
Tipo Filetto Port type			
	GAS		
<b>N</b>	NPT		
<b>S</b>	SAE		

**ESEMPIO ORDINAZIONE - ORDERING CODE EXAMPLE**

<b>VPDE 025</b>	VPDE - Dimensione 025 - Tipo Filetto 1/2 GAS / VPDE - 025 Dimension - 1/2 GAS Port thread
<b>VPDE 02 S</b>	VPDE - Dimensione 02 - Tipo Filetto 3/4-16 SAE / VPDE - 02 Dimension - 3/4-16 SAE Port thread



SCHEDA - CARD	PRODOTTO - PRODUCT	SCHEMA - SCHEMA	VPDE
<b>G30/0</b>			<b>VALVOLA DI RITEGNO                      DOPPIO EFFETTO PILOTATA FLANGIATA                      DUAL PILOT OPERATED                      CHECK VALVE FLANGED MOUNTING</b>

**APPLICAZIONE**

Sono utilizzate per bloccare in posizione un attuatore e renderlo insensibile alle forze esterne. Attacco diretto tramite frangiatura.

**MONTAGGIO**

Collegare le bocche A2 e U2 all'attuatore tramite la flangiatura e le bocche A1 e U1 all'alimentazione.

**FUNZIONAMENTO**

Il fluido passa libero da A1 verso A2 alimentando la bocca dell'attuatore ad esso collegata. Contemporaneamente il pistoncino pilota apre il ritegno sulla bocca U2 permettendo il ritorno del flusso libero verso U1. Alimentando U1 si ottiene l'operazione contraria.

**A RICHIESTA**

Corpo in acciaio zincato - Molle 0,5 Bar - Molle 8 Bar - Tenuta in Viton - Senza guarnizione OR sul pilota - Semplice effetto - Marcatura personalizzabile.

**NOTE COSTRUTTIVE**

Collettore in alluminio - Complete di tenute OR - Componenti interni trattati termicamente - Non ammette trafilamenti.

**APPLICATION**

They are used to hold and lock an actuator in position until pilot pressure is applied. They can be flanged directly to the actuator.

**INSTALLATION**

Fix A2 and U2 ports to the actuator port and A1 and U1 to pressure flow.

**OPERATION**

This valve allows flow from A1 port to A2 port and feeds the actuator port connected to it. At the same time, the pressure flow in A1 opens the relief valve on U2 port, thus allowing the flow return towards U1. The opposite situation occurs when pressure flow passes from U1 port to U2 port.

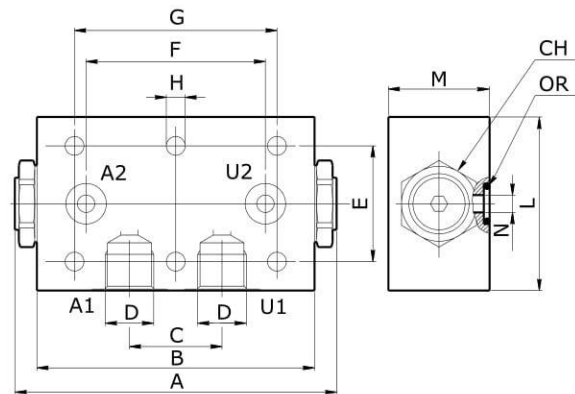
**OPTIONAL**

Steel body - Zinc plated - Spring set at 0.5 or 8 bar - Viton seals - Without o-ring on pilot piston - Single action - Custom marking.

**FEATURES**

Aluminium body - With o-ring seal on pilot piston - Hardened components - No leakage.

CARATTERISTICHE - HYDRAULIC FEATURES				
Dimensione <i>Dimension</i>	01	015	02	025
Pressione max <i>Max pressure (bar)</i>	350	350	350	350
Portata max <i>Max Flow (l/min)</i>	20	20	35	35
Rapporto d'apertura <i>Pilot Ratio</i>	1:4	1:4	1:7	1:7
Pressione d'apertura <i>Cracking Pressure (bar)</i>	4	4	4	4



**DIMENSIONI E PESI - EXTERNAL DIMENSIONS AND WEIGHTS**

Dimensione <i>Dimension</i>	A	B	C	D gas	D npt	D sae	E	F	G	H	L	M	N	CH	OR <i>NBR 70</i>	Peso <i>Weight (kg)</i>
<b>01</b>	113	90	32	1/4	1/4	7/16-20	40	52	70	6.5	50	30	5	22	2x11	0.43
<b>015</b>	113	90	32	3/8	3/8	9/16-18	40	52	70	6.5	50	30	5	22	2x11	0.43
<b>02</b>	113	96	32	3/8	3/8	3/4-16	40	62	70	6.5	60	35	5	27	2.62x9.19	0.60
<b>025</b>	113	96	32	1/2	1/2	7/8-14	40	62	70	6.5	60	35	5	27	2.62x9.19	0.60

**CODICE ORDINAZIONE - ORDERING CODE**

<b>VPDE</b>	<b>F</b>	<b>Tipo Filetto Part type</b>	
Dimensione - Dimension			
Tipo-Type	GAS	NPT	SAE
<b>01</b>	1/4	1/4	7/16-20
<b>015</b>	3/8	3/8	9/16-18
<b>02</b>	3/8	3/8	3/4-16
<b>025</b>	1/2	1/2	7/8-14
<b>N</b>	NPT		
<b>S</b>	SAE		

**ESEMPIO ORDINAZIONE - ORDERING CODE EXAMPLE**

<b>VPDE 025 F</b>	VPDE - Dimensione 025 - Tipo Filetto 1/2 GAS / VPDE - 025 Dimension - 1/2 GAS Port thread
<b>VPDE 02 F S</b>	VPDE - Dimensione 02 - Tipo Filetto 3/4-16 SAE / VPDE - 02 Dimension - 3/4-16 SAE Port thread