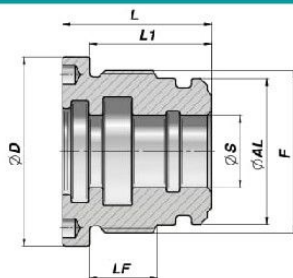


CGMM

NEW!

TETE DE GUIDAGE
HEAD BUSH

Series M250



Code Code	ØAL	ØS	ØD	F	LF	L	L1	kg	Boîte Box	Pcs Pcs	Pochette de joints Seal kits
CGMM114100040	100	40	114	M105x2	30	65	55	3.20	Z05CGMM114100040	5	GKGCMM100040
CGMM114100050	100	50	"	"	"	"	"	2.90	Z05CGMM114100050	5	GKGCMM100050
CGMM114100060	100	60	"	"	"	"	"	2.40	Z05CGMM114100060	5	GKGCMM100060
CGMM114100063	100	63	"	"	"	"	"	2.30	Z05CGMM114100063	5	GKGCMM100063
CGMM114100070	100	70	"	"	"	"	"	1.90	Z05CGMM114100070	5	GKGCMM100070
CGMM124110045	110	45	124	M115x2	36	70	60	4.19	Z03CGMM124110045	3	GKGCMM110045
CGMM124110050	110	50	"	"	"	"	"	3.99	Z03CGMM124110050	3	GKGCMM110050
CGMM124110060	110	60	"	"	"	"	"	3.51	Z03CGMM124110060	3	GKGCMM110060
CGMM124110070	110	70	"	"	"	"	"	2.91	Z03CGMM124110070	3	GKGCMM110070
CGMM139120050	120	50	139	M125x2	36	70	60	5.01	Z03CGMM139120050	3	GKGCMM120050
CGMM139120060	120	60	"	"	"	"	"	4.52	Z03CGMM139120060	3	GKGCMM120060
CGMM139120070	120	70	"	"	"	"	"	3.87	Z03CGMM139120070	3	GKGCMM120070
CGMM139120080	120	80	"	"	"	"	"	3.31	Z03CGMM139120080	3	GKGCMM120080
CGMM144125060	125	60	144	M130x2	41	75	65	5.40	Z02CGMM144125060	2	GKGCMM125060
CGMM144125070	125	70	"	"	"	"	"	4.72	Z02CGMM144125070	2	GKGCMM125070
CGMM144125080	125	80	"	"	"	"	"	4.11	Z02CGMM144125080	2	GKGCMM125080
CGMM144125090	125	90	"	"	"	"	"	3.27	Z02CGMM144125090	2	GKGCMM125090
CGMM159140070	140	70	159	M145x2	41	75	65	6.46			GKGCMM140070
CGMM159140080	140	80	"	"	"	"	"	5.85			GKGCMM140080
CGMM169150070	150	70	169	M155x2	46	82	70	8.55			GKGCMM150070
CGMM169150080	150	80	"	"	"	"	"	7.86			GKGCMM150080
CGMM179160080	160	80	179	M165x2	49	85	73	9.72			GKGCMM160080
CGMM179160090	160	90	"	"	"	"	"	8.79			GKGCMM160090

NE PEUT PAS ETRE MONTE AVEC "STL" STANDARD
NOT SUITABLE FOR STANDARD "STL"

MATERIEL : FONTE EN-GJL 250 (G25-UNI 5007/EN 1561)
MATERIAL : HYDRAULIC CAST IRON EN-GJL 250 (G25-UNI 5007/EN 1561)

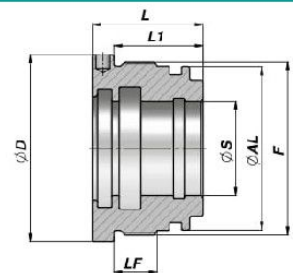
JOINTS : VOIR PAGE 72
SEALS : SEE PAGE 72

SUR DEMANDE : KIT JOINTS IN VITON
ON REQUEST : VITON SEAL KITS

CGLM

TETE DE GUIDAGE
HEAD BUSH

Series C200



Code Code	ØAL	ØS	ØD	F	LF	L	L1	kg	Boîte Box	Pcs Pcs	Pochette de joints Seal kits
CGLM049040020	40	20	49	M44x1.5	11	33	26	0.22	Z50CGLM040020	50	GKGCGLM040020
CGLM049040025	40	25	"	"	"	"	"	0.17	Z50CGLM040025	50	GKGCGLM040025
CGLM059050025	50	25	59	M54x1.5	13	36	28	0.38	Z25CGLM050025	25	GKGCGLM050025
CGLM059050030	50	30	"	"	"	"	"	0.31	Z25CGLM050030	25	GKGCGLM050030
CGLM069060030	60	30	69	M64x1.5	16	41	33	0.62	Z25CGLM060030	25	GKGCGLM060030
CGLM069060035	60	35	"	"	"	"	"	0.53	Z25CGLM060035	25	GKGCGLM060035
CGLM079070035	70	35	79	M74x1.5	16	41	33	0.84	Z20CGLM070035	20	GKGCGLM070035
CGLM079070040	70	40	"	"	"	"	"	0.73	Z20CGLM070040	20	GKGCGLM070040
CGLM092080040	80	40	92	M85x2	18	46	36	1.24	Z10CGLM080040	10	GKGCGLM080040
CGLM092080050	80	50	"	"	"	"	"	1.00	Z10CGLM080050	10	GKGCGLM080050
CGLM114100050	100	50	114	M105x2	22	55	45	2.32	Z10CGLM100050	10	GKGCGLM100050
CGLM114100060	100	60	"	"	"	"	"	1.93	Z10CGLM100060	10	GKGCGLM100060

MATERIEL : FONTE EN-GJL 250 (G25-UNI 5007/EN 1561)
MATERIAL : HYDRAULIC CAST IRON EN-GJL 250 (G25-UNI 5007/EN 1561)

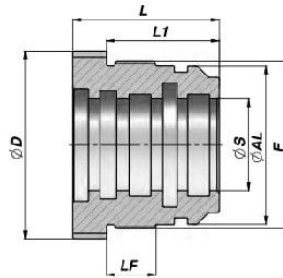
JOINTS : VOIR PAGE 73
SEALS : SEE PAGE 73

SUR DEMANDE : KIT JOINTS IN VITON
ON REQUEST : VITON SEAL KITS

TETE DE GUIDAGE
HEAD BUSH

CGPM

Series P350



Code Code	ØAL	ØS	ØD	F	LF	L	L1	kg	Boîte Box	Pcs Pcs	Pochette de joints Seal kits
CGPM065050025	50	25	64	M54x1.5	22	55	45	0.66	Z25CGPM050025	25	GKGC6PM050025
CGPM065050030	50	30	"	"	"	"	"	0.54	Z25CGPM050030	25	GKGC6PM050030
CGPM065050035	50	35	"	"	"	"	"	0.41	Z25CGPM050035	25	GKGC6PM050035
CGPM075060030	60	30	74	M64x1.5	22	60	48	1.00	Z20CGPM060030	20	GKGC6PM060030
CGPM075060035	60	35	"	"	"	"	"	0.86	Z20CGPM060035	20	GKGC6PM060035
CGPM075060040	60	40	"	"	"	"	"	0.71	Z20CGPM060040	20	GKGC6PM060040
CGPM080063035	63	35	78	M68x1.5	22	60	48	1.04	Z10CGPM063035	10	GKGC6PM063035
CGPM080063040	63	40	"	"	"	"	"	0.89	Z10CGPM063040	10	GKGC6PM063040
CGPM085070035	70	35	84	M74x1.5	22	65	50	1.48	Z05CGPM070035	5	GKGC6PM070035
CGPM085070040	70	40	"	"	"	"	"	1.30	Z05CGPM070040	5	GKGC6PM070040
CGPM100080040	80	40	94	M85x2	25	75	60	2.18	Z05CGPM080040	5	GKGC6PM080040
CGPM100080045	80	45	"	"	"	"	"	1.94	Z05CGPM080045	5	GKGC6PM080045
CGPM100080050	80	50	"	"	"	"	"	1.69	Z05CGPM080050	5	GKGC6PM080050
CGPM110090045	90	45	109	M95x2	25	75	60	2.84	Z05CGPM090045	5	GKGC6PM090045
CGPM110090050	90	50	"	"	"	"	"	2.60	Z05CGPM090050	5	GKGC6PM090050
CGPM110090060	90	60	"	"	"	"	"	2.00	Z05CGPM090060	5	GKGC6PM090060
CGPM120100045	100	45	119	M105x2	25	75	60	3.80	Z05CGPM100045	5	GKGC6PM100045
CGPM120100050	100	50	"	"	"	"	"	3.50	Z05CGPM100050	5	GKGC6PM100050
CGPM120100060	100	60	"	"	"	"	"	2.95	Z05CGPM100060	5	GKGC6PM100060
CGPM130110050	110	50	129	M115x2	30	85	70	5.07	Z03CGPM110050	3	GKGC6PM110050
CGPM130110060	110	60	"	"	"	"	"	4.45	Z03CGPM110060	3	GKGC6PM110060
CGPM140120060	120	60	139	M125x2	30	85	70	5.68	Z02CGPM120060	2	GKGC6PM120060
CGPM140120070	120	70	"	"	"	"	"	4.95	Z02CGPM120070	2	GKGC6PM120070
CGPM140120080	120	80	"	"	"	"	"	3.96	Z02CGPM120080	2	GKGC6PM120080
CGPM145125070	125	70	144	M130x2	39	90	75	5.99	Z02CGPM125070	2	GKGC6PM125070
CGPM145125080	125	80	"	"	"	"	"	4.95	Z02CGPM125080	2	GKGC6PM125080
CGPM160140080	140	80	159	M145x2	40	90	75	7.22			GKGC6PM140080
CGPM160140090	140	90	"	"	"	"	"	6.21			GKGC6PM140090
CGPM160140100	140	100	"	"	"	"	"	5.08			GKGC6PM140100
CGPM170150080	150	80	169	M155x2	46	100	85	9.85			GKGC6PM150080
CGPM170150090	150	90	"	"	"	"	"	8.73			GKGC6PM150090
CGPM170150100	150	100	"	"	"	"	"	7.49			GKGC6PM150100
CGPM180160100	160	100	179	M165x2	46	100	85	9.43			GKGC6PM160100
CGPM180160120	160	120	"	"	"	"	"	6.43			GKGC6PM160120
CGPM215180100	180	100	215	M188x2.5	60	125	107	18.06			GKGC6PM180100
CGPM215180120	180	120	"	"	"	"	"	14.35			GKGC6PM180120
CGPM225200100	200	100	225	M208x2.5	60	125	107	23.63			GKGC6PM200100
CGPM225200120	200	120	"	"	"	"	"	19.92			GKGC6PM200120
CGPM225200140	200	140	"	"	"	"	"	16.03			GKGC6PM200140
CGPM245220120	220	120	245	M228x2.5	65	130	112	27.82			GKGC6PM220120
CGPM245220140	220	140	"	"	"	"	"	23.78			GKGC6PM220140
CGPM275250150	250	150	275	M258x2.5	80	150	130	37.42			GKGC6PM250150
CGPM275250180	250	180	"	"	"	"	"	27.73			GKGC6PM250180
CGPM335300150	300	150	335	M308x3	95	180	155	77.05			GKGC6PM300150
CGPM335300180	300	180	"	"	"	"	"	65.48			GKGC6PM300180

MATERIEL : ACIER UNI C 40
MATERIAL : STEEL UNI C 40JOINTS : VOIR PAGE 73
SEALS : SEE PAGE 73

GKGCMM**Series M250****KIT JOINTS POUR TETE DE GUIDAGE "CGMM"
SEAL KITS FOR "CGMM" HEAD BUSH**

Code Code	Alésage/Tige Bore/Rod	O-Ring Dowty	GHK	TTI-L TTS - TSE	O-Ring Dowty GDS
GKGCMM100040	100 / 40	153	157188	TTI 40-50/3L	GDS 621
GKGCMM100050	100 / 50	153	196228	TTI 50-60/L	GDS 621
GKGCMM100060	100 / 60	153	236267	TSE 283236	GDS 621
GKGCMM100063	100 / 63	153	248279	TTI 63-75/L	GDS 621
GKGCMM100070	100 / 70	153	275307	TSE 334275/1	GDS 621
GKGCMM110045	110 / 45	154	177208	TTI 45-55/2L	GDS 622
GKGCMM110050	110 / 50	154	196228	TTI 50-60/L	GDS 622
GKGCMM110060	110 / 60	154	236267	TSE 283236	GDS 622
GKGCMM110070	110 / 70	154	275307	TSE 334275/1	GDS 622
GKGCMM120050	120 / 50	156	196228	TTI 50-60/L	GDS 623
GKGCMM120060	120 / 60	156	236267	TSE 283236	GDS 623
GKGCMM120070	120 / 70	156	275322	TSE 334275/1	GDS 623
GKGCMM120080	120 / 80	156	314346	TSE 377314/AI	GDS 623
GKGCMM125060	125 / 60	157	236267	TSE 283236	GDS 349
GKGCMM125070	125 / 70	157	275322	TSE 334275/1	GDS 349
GKGCMM125080	125 / 80	157	314346	TSE 377314/AI	GDS 349
GKGCMM125090	125 / 90	157	354401	TSE 413354/1/AI	GDS 349
GKGCMM140070	140 / 70	159	275322	TSE 334275/1	GDS 864
GKGCMM140080	140 / 80	159	314346	TSE 377314/AI	GDS 864
GKGCMM150070	150 / 70	160	275322	TSE 334275/1	GDS 867
GKGCMM150080	150 / 80	160	314346	TSE 377314/AI	GDS 867
GKGCMM160080	160 / 80	161	314346	TSE 377314/AI	GDS 870
GKGCMM160090	160 / 90	161	354401	TSE 413354/1/AI	GDS 870

KIT JOINTS POUR TETE DE GUIDAGE "CGLM"
SEAL KITS FOR "CGLM" HEAD BUSH

Series C200

GKGCGLM

Code Code	Alésage/Tige Bore/Rod	O-Ring Dowty	GHK	TTI-L TTS - TSE	O-Ring Dowty
GKGCGLM040020	40 / 20	129	078110	TTI 20-28/L	219
GKGCGLM040025	40 / 25	129	098129	TTI 25-33/L	219
GKGCGLM050025	50 / 25	135	098129	TTI 25-33/L	826
GKGCGLM050030	50 / 30	135	118149	TTI 30-40/1L	826
GKGCGLM060030	60 / 30	142	118149	TTI 30-40/1L	832
GKGCGLM060035	60 / 35	142	137169	TTI 35-45/L	832
GKGCGLM070035	70 / 35	148	137169	TTI 35-45/L	839
GKGCGLM070040	70 / 40	148	157188	TTI 40-50/3L	839
GKGCGLM080040	80 / 40	151	157188	TTI 40-50/3L	845
GKGCGLM080050	80 / 50	151	196228	TTI 50-60/L	845
GKGCGLM100050	100 / 50	241	196228	TTI 50-60/L	621
GKGCGLM100060	100 / 60	241	236267	TSE 283236	621

KIT JOINTS POUR TETE DE GUIDAGE "CGPM"
SEAL KITS FOR "CGPM" HEAD BUSH

Series P350

GKGCGPM

Code Code	Alésage/Tige Bore/Rod	GAF		GHM/C	O-Ring Dowty	GIR	GKS	O-Ring Dowty	TTX	
GKGCGPM050025	50 / 25	n°3	25x 30x 5.6	25x 35x 7/10	826	-	826	135	1301	-BR
GKGCGPM050030	50 / 30	n°3	30x 35x 5.6	30x 40x 7/10	826	-	826	135	1303	-BR
GKGCGPM050035	50 / 35	n°3	35x 40x 5.6	35x 45x 7/10	826	-	826	135	1305	-BR
GKGCGPM060030	60 / 30	n°2	30x 35x 5.6	n°1 30x 35x 9.7	832	-	832	142	1303	-BR
GKGCGPM060035	60 / 35	n°2	35x 40x 5.6	n°1 35x 40x 9.7	832	-	832	142	1305	-BR
GKGCGPM060040	60 / 40	n°2	40x 45x 5.6	n°1 40x 45x 9.7	832	-	832	142	1308	-BR
GKGCGPM063035	63 / 35	n°2	35x 40x 5.6	n°1 35x 40x 9.7	835	-	835	145	1305	-BR
GKGCGPM063040	63 / 40	n°2	40x 45x 5.6	n°1 40x 45x 9.7	835	-	835	145	1308	-BR
GKGCGPM070035	70 / 35	n°2	35x 40x 9.7	35x 45x 7/10	839	0350	839	148	1305	-BR
GKGCGPM070040	70 / 40	n°2	40x 45x 9.7	40x 50x 7/10	839	0400	839	148	1307/1	-BR
GKGCGPM080040	80 / 40	n°2	40x 45x 9.7	40x 50x 7/10	845	0400	845	151	1307/1	-BR
GKGCGPM080045	80 / 45	n°2	45x 50x 9.7	45x 55x 7/10	845	0450	845	151	1309	-BR
GKGCGPM080050	80 / 50	n°2	50x 55x 9.7	50x 60x 7/10	845	0500	845	151	1310	-BR
GKGCGPM090045	90 / 45	n°2	45x 50x 9.7	45x 55x 7/10	620	0450	620	153	1309	-BR
GKGCGPM090050	90 / 50	n°2	50x 55x 9.7	50x 60x 7/10	620	0500	620	153	1310	-BR
GKGCGPM090060	90 / 60	n°2	60x 65x 9.7	60x 70x 7/10	620	0600	620	153	1314/2	-BR
GKGCGPM100045	100 / 45	n°2	45x 50x 9.7	45x 55x 7/10	621	0450	621	154	1309	-BR
GKGCGPM100050	100 / 50	n°2	50x 55x 9.7	50x 60x 7/10	621	0500	621	154	1310	-BR
GKGCGPM100060	100 / 60	n°2	60x 65x 9.7	60x 70x 7/10	621	0600	621	154	1314/2	-BR
GKGCGPM110050	110 / 50	n°2	50x 55x 9.7	50x 60x 7/10	345	0500	345	156	1310	-BR
GKGCGPM110060	110 / 60	n°2	60x 65x 9.7	60x 70x 7/10	345	0600	345	156	1314/2	-BR
GKGCGPM120060	120 / 60	n°2	60x 65x 9.7	60x 70x 7/10	348	0600	348	158	1314/2	-BR
GKGCGPM120070	120 / 70	n°2	70x 75x 9.7	70x 80x 7/10	348	0700	348	158	1322	-BR
GKGCGPM120080	120 / 80	n°2	80x 85x 9.7	90x 80x 7/10	348	0800	348	158	1331	-BR
GKGCGPM125070	125 / 70	n°3	70x 75x 9.7	70x 80x 7/10	349	0700	349	249	1322	-BR
GKGCGPM125080	125 / 80	n°3	80x 85x 9.7	80x 90x 7/10	349	0800	349	249	1331	-BR
GKGCGPM140080	140 / 80	n°3	80x 85x 9.7	80x 90x 7/10	864	0800	864	254	1331	-BR
GKGCGPM140090	140 / 90	n°3	90x 95x 9.7	90x100x 7/10	864	0900	864	254	1337	-BR
GKGCGPM140100	140 / 100	n°3	100x105x 9.7	100x110x 7/10	864	1000	864	254	1341/1	-BR
GKGCGPM150080	150 / 80	n°3	80x 85x 9.7	80x 90x 7/10	867	0800	867	257	1331	-BR
GKGCGPM150090	150 / 90	n°3	90x 95x 9.7	90x100x 7/10	867	0900	867	257	1337	-BR
GKGCGPM150100	150 / 100	n°3	100x105x 9.7	100x110x 7/10	867	1000	867	257	1341/1	-BR
GKGCGPM160100	160 / 100	n°3	100x105x 9.7	100x110x 7/10	870	1000	870	259	1341/1	-BR
GKGCGPM160120	160 / 120	n°3	120x125x 9.7	120x130x 7/10	870	1200	870	259	1348	-BR
GKGCGPM180100	180 / 100	n°2	100x105x 9.7	n°2 100x105x15	628	1000	628	263	1341/1	-BR
GKGCGPM180120	180 / 120	n°2	120x125x 9.7	n°2 120x125x15	628	1200	628	263	1348	-BR
GKGCGPM200100	200 / 100	n°2	100x105x 9.7	n°2 100x105x15	882	1000	882	266	1341/1	-BR
GKGCGPM200120	200 / 120	n°2	120x125x 9.7	n°2 120x125x15	882	1200	882	266	1348	-BR
GKGCGPM200140	200 / 140	n°2	140x145x 9.7	n°2 140x145x15	882	1400	882	266	1350/1	-BR
GKGCGPM220120	220 / 120	n°2	120x125x 9.7	n°2 120x125x15	674	1200	674	269	1348	-BR
GKGCGPM220140	220 / 140	n°2	140x145x 9.7	n°2 140x145x15	674	1400	674	269	1350/1	-BR
GKGCGPM250150	250 / 150	n°2	150x155x 9.7	n°2 150x155x25	678	1500	678	274	1350/2A	-BR
GKGCGPM250180	250 / 180	n°2	180x185x 9.7	n°2 180x185x25	678	1800	678	274	1350/4	-BR
GKGCGPM300150	300 / 150	n°2	150x155x12.5	n°2 150x155x30	686	1500	686	277	1350/2A	-BR
GKGCGPM300180	300 / 180	n°2	180x185x12.5	n°2 180x185x30	686	1800	686	277	1350/4	-BR