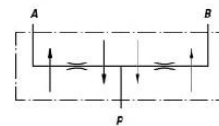
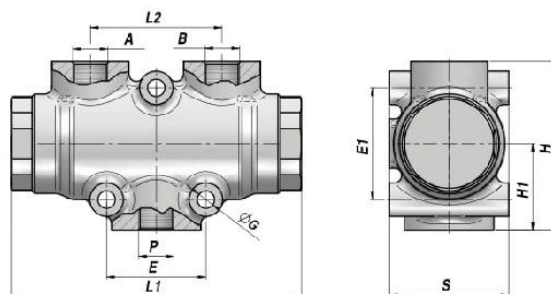


VEQ

DIVISEUR DE DEBIT FLOW DIVIDER



Code Code	P BSP	A - B BSP	Q MIN/MAX l/min	P MAX bar	Type Type	L1	L2	E	E1	ØG	H1	H	S	kg
V3615.0311	3/8"	3/8"	1/ 3	250	VEQ 8	117	53	40	45	7	35	68	48	1,27
V3615.0312	3/8"	3/8"	3/ 6	250	VEQ 10	117	53	40	45	7	35	68	48	1,27
V3615.0313	3/8"	3/8"	6/10	250	VEQ 15	117	53	40	45	7	35	68	48	1,28
V3615.0314	3/8"	3/8"	10/20	250	VEQ 20	117	53	40	45	7	35	68	48	1,27
V3615.0315	3/8"	3/8"	20/32	250	VEQ 22	117	53	40	45	7	35	68	48	1,28
V3615.0316	1/2"	3/8"	25/40	250	VEQ 25	117	53	40	45	7	35	68	48	1,28
V3615.0317	1/2"	3/8"	40/60	250	VEQ 30	117	53	40	45	7	35	68	48	1,26
V3615.0318	1/2"	3/8"	60/80	250	VEQ 50	117	53	40	45	7	35	68	48	1,26

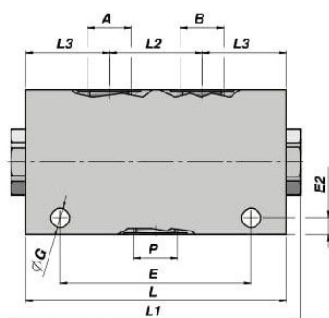
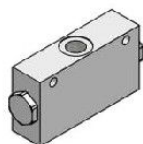
MATERIEL CORPS : FONTE
BODY MATERIAL : CAST IRON

MONTAGE EN LIGNE
LINE MOUNTING

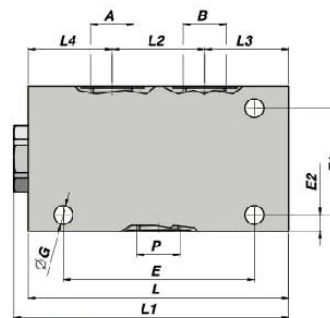
VDF

NEW!

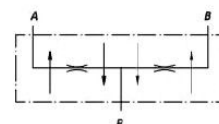
DIVISEUR DE DEBIT FLOW DIVIDER



VDF 38 - VDF 12



VDF 34



Code Code	P BSP	A - B BSP	Q MIN/MAX l/min	P MAX bar	Type Type	L	L1	L2	L3	L4	E	E1	E2	ØG	H	S	kg
VAG501.20*000	3/8"	3/8"	6.5 / 38	210	VDF 38-*	121	135.0	53	34	-	100	-	7	6.5	60	40	0,87
VAG501.25*000	1/2"	3/8"	6.5 / 38	210	VDF 12-*	121	135.0	53	34	-	100	-	7	6.5	60	40	0,85
VAG501.35*000	3/4"	1/2"	15 / 90	210	VDF 34-*	120	129.5	48	42	30	102	60	10	6.5	80	40	0,92

* = Plage de Réglage - Flow Range (l/min - 50 bar) :

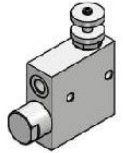
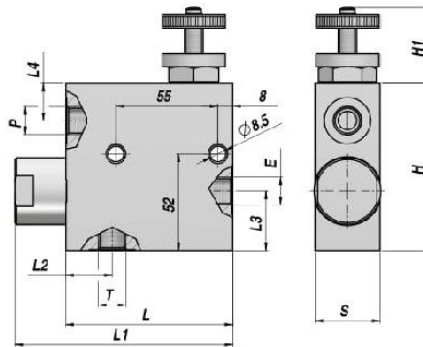
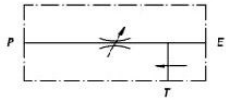
* VDF 38-A = 6.5 - 12 - VDF 38-B = 13-23 - VDF 38-C = 24- 38

* VDF 12-A = 6.5 - 12 - VDF 12-B = 13-23 - VDF 12-C = 24- 38

* VDF 34-A = 15 - 55 - VDF 34-B = 56-90

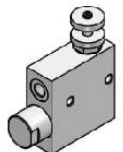
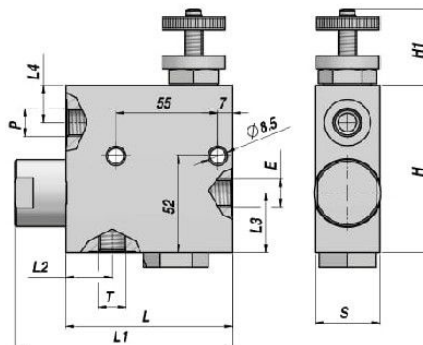
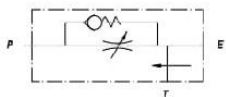
MATERIEL CORPS : ALUMINIUM
BODY MATERIAL : ALUMINIUM

MONTAGE EN LIGNE
LINE MOUNTING

REGULATEUR DE DEBIT PRIORITAIRE
PRIORITY FLOW CONTROL
RFP 3
COMPENSE EN PRESSION
PRESSURE COMPENSATED

REGlable - ADJUSTABLE
EXCEDENT AU RESERVOIR - EXCEEDING FLOW TO TANK

Code Code	E - P - T BSP	Q MAX l/min ln (E)/Reg (P)	P MAX bar	Type Type	L	L1	L2	L3	L4	H1	H	S	kg
V3390.1110	3/8"	60/ 50	350	RFP 3 3/8"	90	118	25	32	20	40	90	35	2,17
V3390.1120	1/2"	80/ 60	350	RFP 3 1/2"	90	118	25	32	20	40	90	35	2,10
V3390.1130	3/4"	120/100	350	RFP 3 3/4"	90	122	27	36	19	40	102	50	3,35

MATERIEL CORPS : ACIER
BODY MATERIAL : STEEL

MONTAGE EN LIGNE
LINE MOUNTING
REGULATEUR DE DEBIT PRIORITAIRE AVEC CLAPET ANTI-RETOUR
PRIORITY FLOW CONTROL WITH CHECK VALVE
NEW!
RFP 3VU
COMPENSE EN PRESSION
PRESSURE COMPENSATED

REGlable - ADJUSTABLE
EXCEDENT AU RESERVOIR - EXCEEDING FLOW TO TANK

Code Code	E - P - T BSP	Q MAX l/min ln (E)/Reg (P)	P MAX bar	Type Type	L	L1	L2	L3	L4	H1	H	S	kg
V3390.1110VU	3/8"	60 / 50	350	RFP-VU 3 3/8"	90	118	25	32	20	35	90	40	2,20
V3390.1120VU	1/2"	80 / 60	350	RFP-VU 3 1/2"	90	118	25	32	20	35	90	40	2,10

MATERIEL CORPS : ACIER
BODY MATERIAL : STEEL

MONTAGE EN LIGNE
LINE MOUNTING

REGULATEUR DE DEBIT PRIORITAIRE (COMPENSE EN PRESSION) POUR MOTEURS

PRIORITY FLOW CONTROL (PRESSURE COMPENSATED) FOR MOTORS

RFP 3

REGLABLE - ADJUSTABLE - REGULABLE

EXCEDENT AU RESERVOIR - EXCEEDING FLOW TO TANK - EXCESO AL DEPOSITO

Code Code Código	E - P - T BSP	Q MAX l/min In (E)/Reg (P)	P MAX bar	Type Type Tipo	L	L1	L2	L3	L4	H1	H	S	kg
V3390.1121	1/2"	50 / 30	350	RFP 3 1/2" OMP/OMR									
V3390.1122	1/2"	50 / 30	350	RFP 3 1/2" OMS									

MONTAGE EN LIGNE

LINE MOUNTING

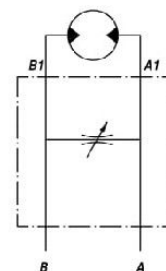
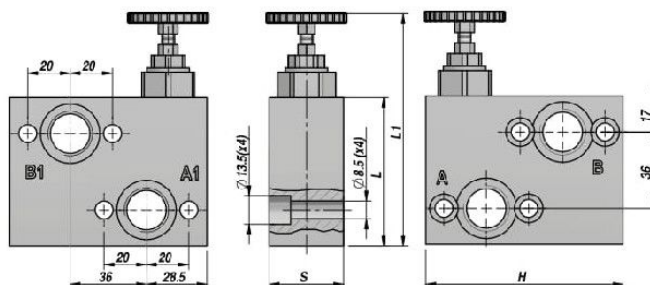
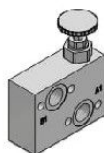
MONTAJE EN LINEA

MATERIEL - MATERIAL:ACIER - STEEL - ACERO

BVR01

NEW!

ETRANGLEUR REGLABLE POUR MOTEURS "MPP-MPR-MCP-MCR"
FLOW CONTROL FOR "MPP-MPR-MCP-MCR" MOTORS



REGLABLE - ADJUSTABLE
BIDIRECTIONEL - BIDIRECTIONAL

[illegible]

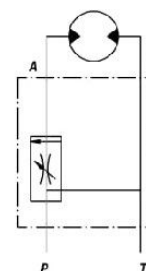
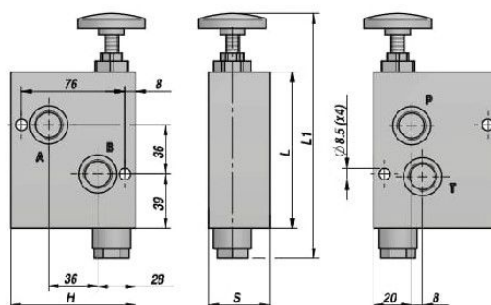
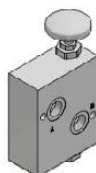
MATERIEL CORPS : ALUMINIUM
BODY MATERIAL : ALUMINIUM

FLASQUABLE
FACE MOUNTING

BVR05

NEW!

ETRANGLEUR REGLABLE POUR MOTEURS "MPP-MPR-MCP-MCR"
PRIORITY FLOW CONTROL FOR "MPP-MPR-MCP-MCR" MOTORS



REGULABLE - ADJUSTABLE
EXCEDENT AU RESERVOIR - EXCEEDING FLOW TO TANK

[illegible]

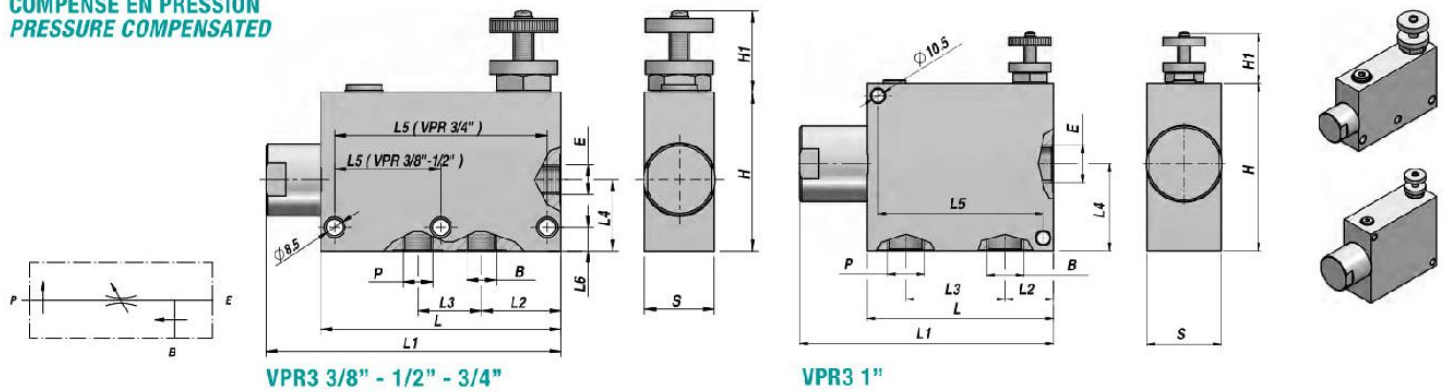
MATERIEL CORPS : ACIER
BODY MATERIAL : STEEL

FLASQUABLE
FACE MOUNTING

REGULATEUR DE DEBIT PRIORITAIRE
PRIORITY FLOW CONTROL

VPR 3

COMPENSE EN PRESSION
PRESSURE COMPENSATED



REGLABLE - ADJUSTABLE
EXCEDENT EN PRESSION - EXCEEDING FLOW TO PRESSURE

Code Code	E - P - B BSP	Q MAX l/min In (E)/Reg (P)	P MAX bar	Type Type	L	L1	L2	L3	L4	L5	L6	H1	H	S	kg
V3490.1060	3/8"	60 / 50	350	VPR 3 3/8"	121	147	40	32	36	55	12	35	80	35	2,53
V3490.1070	1/2"	80 / 60	350	VPR 3 1/2"	121	147	37	36	36	55	12	35	80	35	2,47
V3490.1080	3/4"	120 / 100	350	VPR 3 3/4"	155	187	50	44	37	115	10	35	90	50	4,95
V3490.1090	1"	200 / 170	350	VPR 3 1"	155	187	46	58	47	115	12	35	100	50	5,27

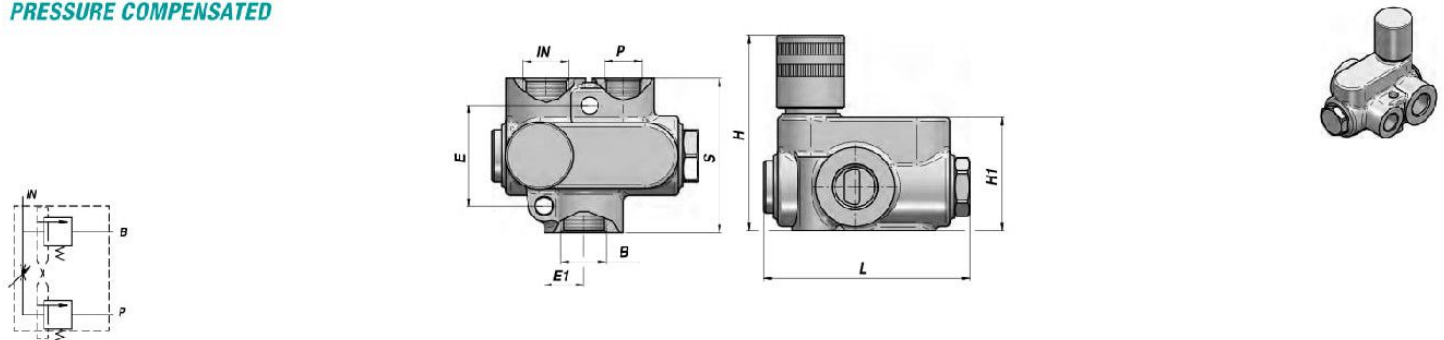
MATERIEL CORPS : ACIER
BODY MATERIAL : STEEL

MONTAGE EN LIGNE
LINE MOUNTING

REGULATEUR DE DEBIT PRIORITAIRE
PRIORITY FLOW CONTROL

RFP .. G

COMPENSE EN PRESSION
PRESSURE COMPENSATED



REGLABLE - ADJUSTABLE
EXCEDENT EN PRESSION - EXCEEDING FLOW TO PRESSURE

Code Code	IN - B BSP	P BSP	Q MAX l/min IN	Q MAX l/min P	P MAX bar	Type Type	L	E	E1	H1	H	S	kg
V6215.0320	1/2"	3/8"	40	40	250	RFP 40 G	92	46	22.5	54	98	65	1,27
V6215.0322	3/4"	1/2"	80	80	250	RFP 70 G	110	52	24.5	59	103	80	1,77

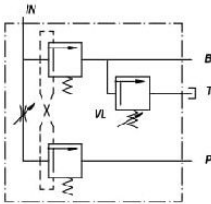
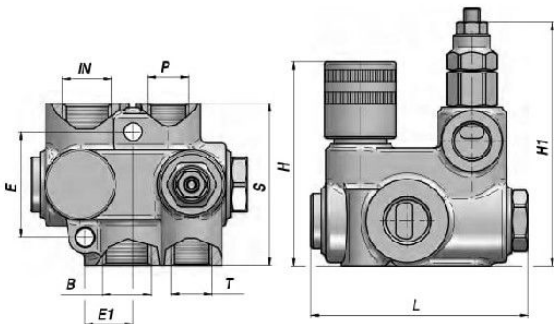
MATERIEL CORPS : FONTE
BODY MATERIAL : CAST IRON

MONTAGE EN LIGNE
LINE MOUNTING

RFPV .. G

REGULATEUR DE DEBIT PRIORITAIRE
PRIORITY FLOW CONTROL

COMPENSE EN PRESSION
PRESSURE COMPENSATED



REGLABLE - *ADJUSTABLE*
EXCEDENT EN PRESSION - *EXCEEDING FLOW TO PRESSURE*

Code <i>Code</i>	IN - B BSP	P - T BSP	Q MAX l/min IN	Q MAX l/min P	P MAX bar	Type <i>Type</i>	L	E	E1	H1	H	S	kg
V6215.0321 **	1/2"	3/8"	40	40	250	RFPV 40 GU	92	46	22.5	105	98	65	1,54
V6215.0323	3/4"	1/2"	80	80	250	RFPV 70 GU	110	52	24.5	125	103	80	2,04

RESSORT - *SPRING* : X= 10:100 bar - U= 50:230 bar (Standard) - K= 100:250 bar
** = SUR DEMANDE - *ON REQUEST*

MATERIEL CORPS : FONTE
BODY MATERIAL : CAST IRON

MONTAGE EN LIGNE
LINE MOUNTING