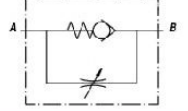
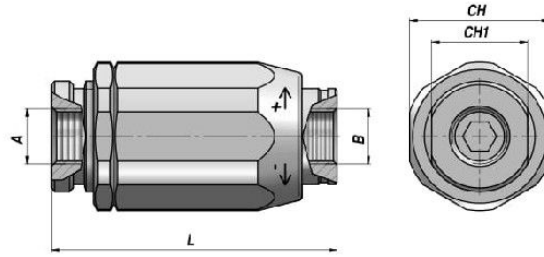


VRFC

**ETRANGLEUR REGLABLE (ETANCHEITE PAR CONE)
ADJUSTABLE THROTTLE-CHECK VALVE (POPPET TYPE)**



Code Code	A BSP	B BSP	Q MAX l/min A>B	Q MAX l/min B>A	P MAX bar	Type Type	L	CH	CH1	kg
VSG512.100000	1/4"	1/4"	30	30	350	VRFC 010	66.0	32	22	0,30
VSG512.200000	3/8"	3/8"	40	50	350	VRFC 020	77.5	38	26	0,48
VSG512.300000	1/2"	1/2"	50	80	350	VRFC 030	83.0	41	30	0,59
VSG512.400000	3/4"	3/4"	80	110	300	VRFC 040	104.0	55	38	1,34
VSG512.500000	1"	1"	110	160	250	VRFC 050	118.5	65	46	2,15
VSG512.600000	1"1/4	1"1/4	150	210	230	VRFC 060	135.0	80	55	3,31
VSG512.700000	1"1/2	1"1/2	210	280	230	VRFC 070	149.5	90	62	4,76

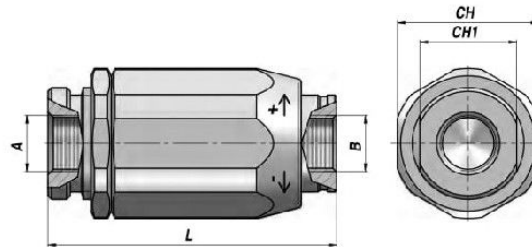
MATERIEL CORPS : ACIER
BODY MATERIAL : STEEL

MONTAGE EN LIGNE
LINE MOUNTING

UNIDIRECTIONNEL
UNIDIRECTIONAL

VRB

**ETRANGLEUR REGLABLE
ADJUSTABLE THROTTLE VALVE**



Code Code	A BSP	B BSP	Q MAX l/min	P MAX bar	Type Type	L	CH	CH1	kg
VSG515.100000	1/4"	1/4"	30	350	VRB 010	66.0	32	22	0,30
VSG515.200000	3/8"	3/8"	45	350	VRB 020	77.5	38	26	0,48
VSG515.300000	1/2"	1/2"	70	350	VRB 030	83.0	41	30	0,59
VSG515.400000	3/4"	3/4"	100	300	VRB 040	104.0	55	38	1,34
VSG515.500000	1"	1"	150	250	VRB 050	118.5	60	46	2,15

MATERIEL CORPS : ACIER
BODY MATERIAL : STEEL

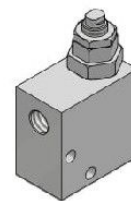
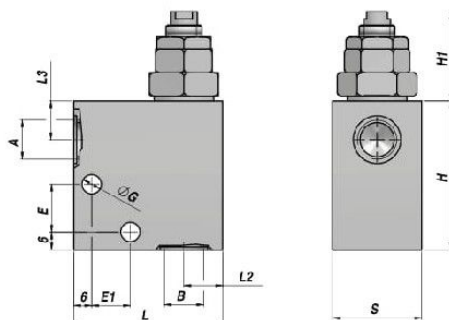
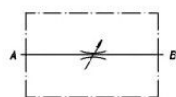
MONTAGE EN LIGNE
LINE MOUNTING

BIDIRECTIONNEL
BIDIRECTIONAL

REGULATEUR DE DEBIT
FLOW CONTROL VALVE

NEW!

RFB



Code Code	A BSP	B BSP	Q MAX l/min	P MAX bar	Type Type	L	L2	L3	E	E1	ØG	H	H1 max	S	kg
VSG530.100000	1/4"	1/4"	20	350	RFB 20-010-1	50	16	13	16	13	6.5	50	57	30	0,30
VSG530.200000	3/8"	3/8"	20	350	RFB 20-020-1	50	16	13	16	13	6.5	50	57	30	0,30

REGLAGE - SETTING :
1= Vis - Screw (Standard)
2= Volant - Knob



MATERIEL CORPS : ALUMINIUM
BODY MATERIAL : ALUMINIUM

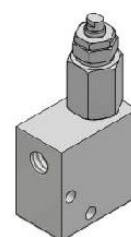
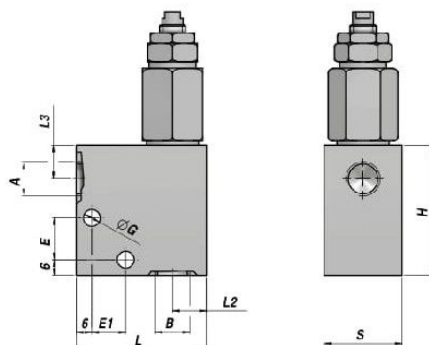
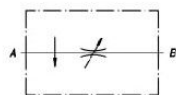
MONTAGE EN LIGNE
LINE MOUNTING

BIDIRECTIONNEL
BIDIRECTIONAL

REGULATEUR DE DEBIT COMPENSE
COMPENSATED FLOW CONTROL VALVE

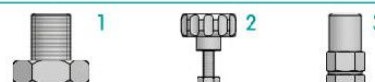
NEW!

RFB/C



Code Code	A BSP	B BSP	Q MAX l/min	P MAX bar	Type Type	L	L2	L3	E	E1	ØG	H	H1 max	S	kg
VSG531.100000	1/4"	1/4"	18	210	RFB/C 20-010-1	50	16	13	16	13	6.5	50	77	30	0,36
VSG531.200000	3/8"	3/8"	18	210	RFB/C 20-020-1	50	16	13	16	13	6.5	50	77	30	0,36

REGLAGE - SETTING :
1= Vis - Screw (Standard)
2= Volant - Knob
3= Vis+protection - Screw + protection cup



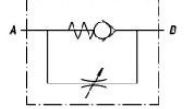
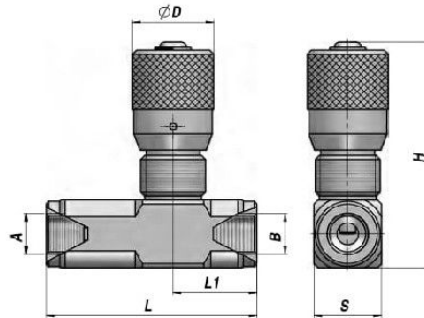
MATERIEL CORPS : ALUMINIUM
BODY MATERIAL : ALUMINIUM

MONTAGE EN LIGNE
LINE MOUNTING

BIDIRECTIONNEL
BIDIRECTIONAL

VRFU 90

REGULATEUR DE DEBIT (ETANCHEITE PAR CONE)
FLOW CONTROL VALVE (POPPET TYPE)



Code Code	A BSP	B BSP	Q MAX l/min A>B	Q MAX l/min B>A	P MAX bar	Type Type	L	L1	ØD	F	H	S	kg
VSG521.100000	1/4"	1/4"	30	35	350	VRFU90 010	75	29.0	30	M25x1.5	82	25	0,40
VSG521.200000	3/8"	3/8"	40	50	350	VRFU90 020	78	31.0	30	M25x1.5	82	25	0,41
VSG521.300000	1/2"	1/2"	50	90	350	VRFU90 030	93	33.5	30	M25x1.5	88	30	0,58
VSG521.400000	3/4"	3/4"	80	140	320	VRFU90 040	110	41.5	42	M35x1.5	116	40	1,39
VSG521.500000	1"	1"	110	180	300	VRFU90 050	135	44.5	42	M35x1.5	116	40	1,36

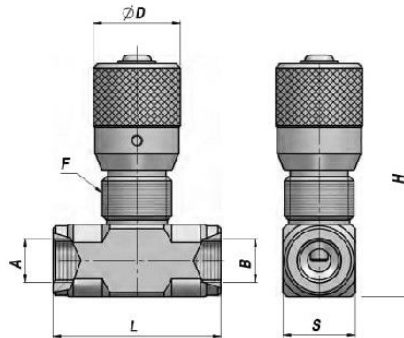
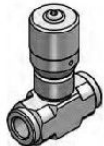
MATERIEL CORPS : ACIER
BODY MATERIAL : STEEL

MONTAGE EN LIGNE
LINE MOUNTING

UNIDIRECTIONNEL
UNIDIRECTIONAL

VRFB 90

REGULATEUR DE DEBIT
FLOW CONTROL VALVE



Code Code	A BSP	B BSP	Q MAX l/min	P MAX bar	Type Type	L	ØD	F	H	S	kg
VSG522.100000	1/4"	1/4"	30	350	VRFB90 010	58	30	M25x1.5	82	25	0,34
VSG522.200000	3/8"	3/8"	40	350	VRFB90 020	58	30	M25x1.5	82	25	0,34
VSG522.300000	1/2"	1/2"	50	350	VRFB90 030	64	30	M25x1.5	88	30	0,43
VSG522.400000	3/4"	3/4"	80	320	VRFB90 040	89	42	M35x1.5	116	40	1,13
VSG522.500000	1"	1"	110	300	VRFB90 050	89	42	M35x1.5	116	40	1,00

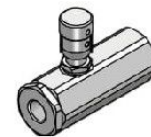
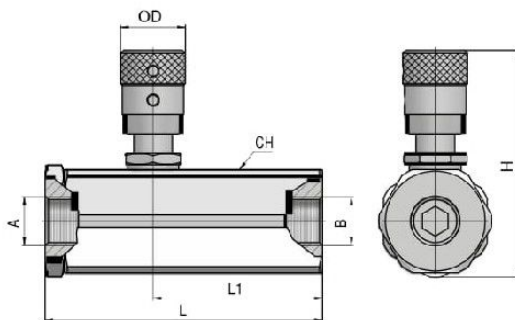
MATERIEL CORPS : ACIER
BODY MATERIAL : STEEL

MONTAGE EN LIGNE
LINE MOUNTING

BIDIRECTIONNEL
BIDIRECTIONAL

REGULATEUR DE DEBIT COMPENSE (ETANCHEITE PAR CONE)
COMPENSATED FLOW CONTROL VALVE (POPPET TYPE)

VRFU 90-C



Code Code	A BSP	B BSP	Q MAX l/min A>B	Q MAX l/min B>A	P MAX bar	Type Type	L	L1	ØD	CH	H	kg
VSG523.1C0000	1/4"	1/4"	17	25	300	VRFU90-C 010	87	52.5	20	32	68	0,52
VSG523.2C0000	3/8"	3/8"	17	30	300	VRFU90-C 020	87	52.5	20	32	68	0,50
VSG523.3C0000	1/2"	1/2"	28	35	250	VRFU90-C 030	107	61.0	20	36	71	0,69

MATERIEL CORPS : ACIER
BODY MATERIAL : STEEL

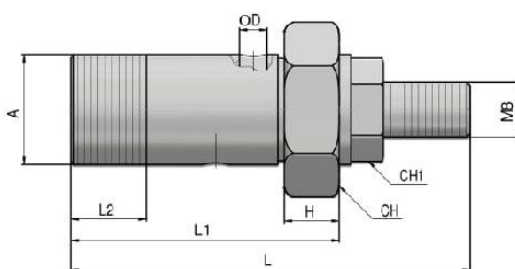
MONTAGE EN LIGNE
LINE MOUNTING

UNIDIRECTIONNEL
UNIDIRECTIONAL

VIS D'ETRANGLEMENT
THROTTLE SCREW

NEW!

VS



Code Code	A BSP	Q MAX l/min	P MAX bar	Type Type	L max	L1	L2	H	ØD	CH	CH1	kg x 100
VSG510.100000	1/4"	-	350	VTS 1/4"	60	36	13.5	7	3.0	19	13	
VSG510.200000	3/8"	-	350	VTS 3/8"	63	39	16	8	4.0	22	13	
V2890.1371	1/2"	-	350	VS 1/2"	62	46	16	8	4.0	27	13	14,00

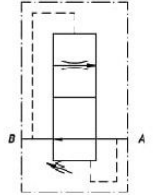
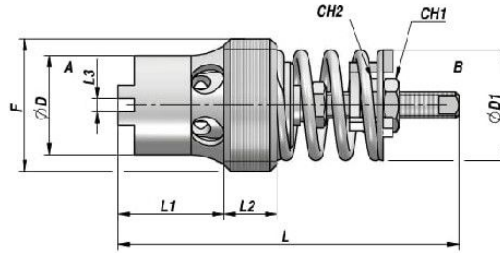
REGLAGE - SETTING : Vis - Screw

MATERIEL CORPS : ACIER
BODY MATERIAL : STEEL

MONTAGE SUR VERIN
CYLINDER MOUNTING

VRD

VALVE DE FREINAGE REGLABLE
ADJUSTABLE DESCENT CONTROL VALVE



Code Code	F BSP	Q MAX l/min B>A	Q MAX l/min A>B	P MAX bar	Type Type	L	L1	L2	L3	ØD	ØD1	CH1	CH2	kg x 100
VCG501.100*00	1/4"	10	25	300	VRD 010-*	39	11.5	8.0	-	10.0	10.0	5.5	5.5	1.20
VCG501.200*00	3/8"	25	50	300	VRD 020-*	45	16.0	6.0	2	11.5	13.5	6.0	7.0	2.20
VCG501.300*00	1/2"	67	90	300	VRD 030-*	50	17.0	7.0	2	16.0	18.0	6.0	7.0	3.60
VCG501.400*00	3/4"	150	220	300	VRD 040-*	60	21.5	9.5	2	20.0	23.0	6.0	7.0	6.90

* = Plage de Réglage - Flow Range (l/min - 50 bar) :

* VRD 010: 1=(1.0-1.6) - 2=(1.6-2.5) - 3=(2.5-4.0) - 4=(4.0-6.3) - 5=(6.3-10)

* VRD 020: 1=(2.5-4.0) - 2=(4.0-6.3) - 3=(6.3-10) - 4=(10-16) - 5=(16-25)

* VRD 030: 1=(16-21) - 2=(21-28) - 3=(28-37) - 4=(37-50) - 5=(50-67)

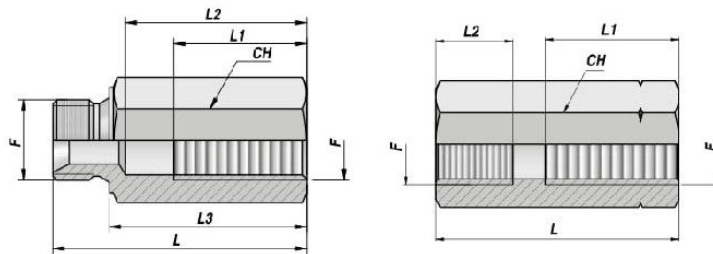
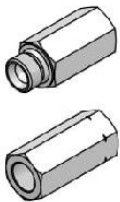
* VRD 040: 1=(37-50) - 2=(50-67) - 3=(67-90) - 4=(90-120) - 5=(120-150)

MATERIEL CORPS : ACIER
BODY MATERIAL : STEEL

CARTOUCHE
CARTRIDGE

CMF x VRD CFF x VRD

RACCORD POUR VALVE "VRD"
"VRD" VALVE ADAPTER



TYPE CMF

TYPE CFF

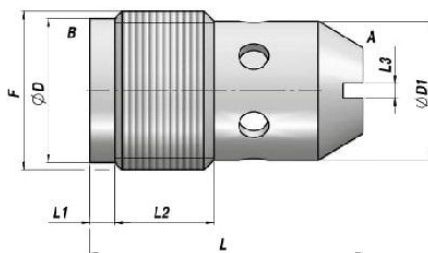
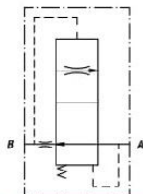
Code Code	F BSP	P MAX bar	Type Type	L	L1	L2	L3	CH	kg x 100
				MALE-FEMELLE		MALE-FEMALE			
VCG502.100000 NEW!	1/4"	350	CMFxVRD-010	76	41	61	66	19	9.00
VCG502.200000	3/8"	350	CMFxVRD-020	82	41	63	70	22	11.00
VCG502.300000	1/2"	350	CMFxVRD-030	100	45	79	86	27	16.50
VCG502.400000	3/4"	300	CMFxVRD-040	112	55	86	96	32	25.00

Code Code	F BSP	P MAX bar	Type Type	L	L1	L2	L3	CH	kg x 100
				FEMELLE-FEMELLE		FEMALE-FEMALE			
VCG503.100000 NEW!	1/4"	350	CFFxVRD-010	66	34	12	-	19	8.00
VCG503.200000	3/8"	350	CFFxVRD-020	70	37	14	-	22	11.00
VCG503.300000	1/2"	350	CFFxVRD-030	80	41	16	-	27	16.50
VCG503.400000	3/4"	300	CFFxVRD-040	100	54	19	-	32	25.00

MATERIEL : ACIER
MATERIAL : STEEL

VALVE DE FREINAGE
DESCENT CONTROL VALVE

VSC



Code Code	F BSP	Q MAX l/min B>A	Q MAX l/min A>B	P MAX bar	Type Type	L	L1	L2	L3	ØD	ØD1	kg x 100
VCG505.10*000	1/4"	10	15	350	VSC 010-*	23	1.5	7.0	1.5	-	10.5	1,00
VCG505.20*000	3/8"	16	25	350	VSC 020-*	28	2.5	10.5	1.5	14.5	14.0	2,60
VCG505.30*000	1/2"	45	60	350	VSC 030-*	36	5.0	12.0	2.0	18.0	17.0	5,00

* = Débit nominal - Nominal Flow (l/min - 50 bar) :

* VSC010: A= 1 - B= 2 - C= 3 - D= 4 - E= 5 - F= 6 - G= 7 - H= 8 - I= 9 - L=10

* VSC020: A= 2 - B= 4 - C= 6 - D= 8 - E=10 - F=12 - G=14 - H=16

* VSC030: A=12 - B=16 - C=20 - D=25 - E=30 - F=35 - G=40 - H=45

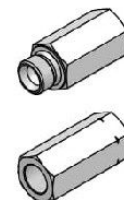
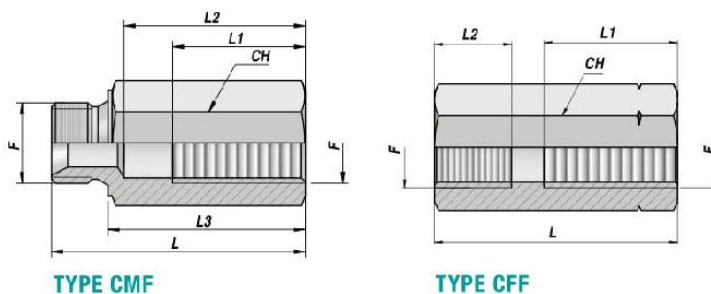
MATERIEL CORPS : ACIER
BODY MATERIAL : STEEL

MONTAGE EN LIGNE
LINE MOUNTING

RACCORD POUR VALVE "VSC"
"VSC" VALVE ADAPTER

CMF x VSC

CFF x VSC



Code Code	F BSP	P MAX bar	Type Type	L	L1	L2	L3	CH	kg x 100
				MALE-FEMELLE		MALE-FEMALE			
VCG506.100000	1/4"	350	CMFxVSC-010	62	42	45	50	19	7,00
VCG506.200000	3/8"	350	CMFxVSC-020	82	41	63	70	22	9,50
VCG506.300000 NEW!	1/2"	350	CMFxVSC-030	100	45	79	86	27	14,70
				FEMELLE-FEMELLE		FEMALE-FEMALE			
VCG507.100000	1/4"	350	CFFxVSC-010 *	50	21	12	-	19	8,00
VCG507.200000	3/8"	350	CFFxVSC-020	70	37	14	-	22	11,00
VCG507.300000 NEW!	1/2"	350	CFFxVSC-030	80	50	16	-	27	16,50

* = Monter la valve renversée - insert the valve in the inverse direction

MATERIEL : ACIER
MATERIAL : STEEL