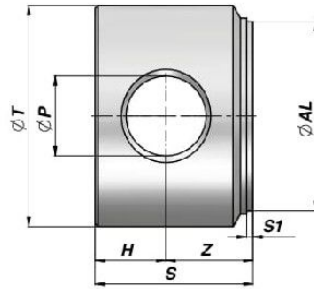


FOND PERCE  
END PLUG WITH HOLE

CFO

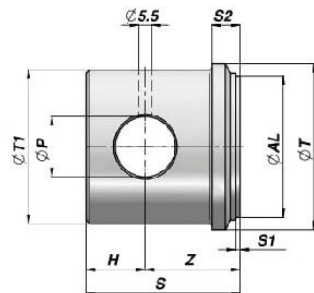


Code Code	ØAL	ØT	ØP	Z	H	S	S1	kg	Boîte Box	Pcs Pcs
CF04005016	40	50	16.20	20.0	15.0	35	2	0,42	Z50CF04005016	50
CF05006020	50	60	20.25	25.0	20.0	45	2	0,80	Z20CF05006020	20
CF06007025	60	70	25.25	27.5	22.5	50	2	1,20	Z20CF06007025	20
CF07008025	70	80	25.25	27.5	22.5	50	2	1,60	Z10CF07008025	10
CF08009530	80	95	30.25	35.0	25.0	60	2	2,70	Z05CF08009530	5
CF10011535	100	115	35.25	40.0	30.0	70	2	4,70	Z05CF10011535	5

MATERIEL : ACIER S355JO (Fe510C) - S355JR (A105)  
MATERIAL : STEEL S355JO (Fe510C) - S355JR (A105)

FOND PERCE  
END PLUG WITH HOLE

CFHRT



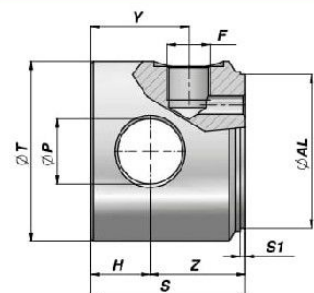
Code Code	ØAL	ØT	ØP	Z	H	S	S1	ØT1	S2	kg	Boîte Box	Pcs Pcs
CFHRT07060	60	70	25.50	40	25	65	2	65	12	1,48	Z12CFHRT07060	12
CFHRT08070 <b>NEW!</b>	70	80	25.25	35	25	60	2	75	10	1,79	Z10CFHRT08070	10
CFHRT09080 <b>NEW!</b>	80	90	30.25	40	30	70	2	85	10	2,64	Z05CFHRT09080	5

MATERIEL : ACIER S355JO (Fe510C) - S355JR (A105)  
MATERIAL : STEEL S355JO (Fe510C) - S355JR (A105)

SUR DEMANDE : GRAISSEUR VOIR PAGE 103  
ON REQUEST : GREASE NIPPLE SEE PAGE 103

FOND PERCE AVEC ENTREE HUILE  
END PLUG WITH CROSS HOLE AND INLET PORT

CFE

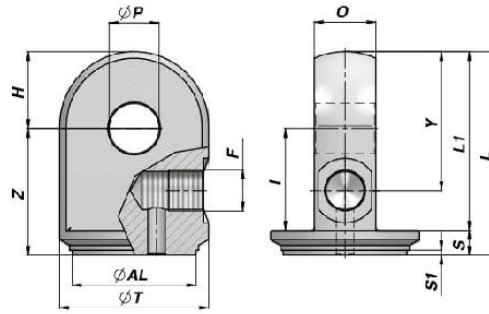


Code Code	ØAL	ØT	ØP	Z	H	F BSP	Y	S	S1	kg	Boîte Box	Pcs Pcs
CFE0400504	40	50	16.20	35	15	1/4"	30	50	2	0,60	Z25CFE0400504	25
CFE0500606	50	60	20.25	40	20	3/8"	38	60	2	1,10	Z10CFE0500606	10
CFE0600706	60	70	25.25	37	23	3/8"	38	60	2	1,40	Z10CFE0600706	10
CFE0700806	70	80	25.25	37	23	3/8"	38	60	2	1,95	Z10CFE0700806	10
CFE0800958	80	95	30.25	50	25	1/2"	47	75	2	2,50	Z05CFE0800958	5
CFE1001158	100	115	35.25	45	30	1/2"	47	75	2	4,50	Z05CFE1001158	5

MATERIEL : ACIER S355JO (Fe510C) - S355JR (A105)  
MATERIAL : STEEL S355JO (Fe510C) - S355JR (A105)

**FOND PERCE A CHARNIERE ET ENTREE HUILE**  
**HINGE END PLUG WITH CROSS HOLE AND INLET PORT**

**CFB**

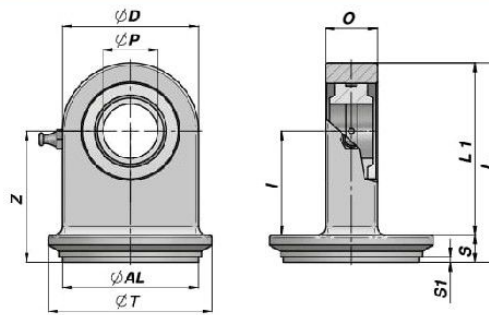


Code Code	ØAL	ØT	ØP	Z	H	Ø	F BSP	Y	I	S	S1	L	L1	kg
CFB0400504	40	50	16.20	46	19	24.8	1/4"	39	36	10	2	65	55	0,55
CFB0500606	50	60	20.25	51	31	24.8	3/8"	56	41	10	2	82	72	0,84
CFB0600706	60	70	25.25	57	33	24.8	3/8"	63	45	12	2	90	78	1,14
CFB0700806	70	80	25.25	65	42	39.5	3/8"	82	53	12	2	107	95	2,24

MATERIEL : ACIER S355J0 (Fe510C) - S355JR (A105)  
 MATERIAL : STEEL S355J0 (Fe510C) - S355JR (A105)

**FOND AVEC EMBOUT A ROTULE AVEC GRAISSEUR**  
**END PLUG WITH BALL-JOINT END WITH GREASE NIPPLE**

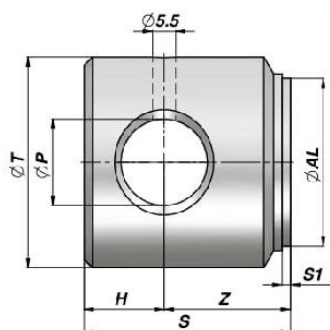
**CSTSNF**



Code Code	ØAL	ØT	ØP	Z	ØD	Ø	I	S	S1	L	L1	kg
CSTSNF020040	40	50	20	48	50	19	38	10	2	73.0	63.0	0,48
CSTSNF020045	45	55	20	48	50	19	38	10	2	73.0	63.0	0,50
CSTSNF020050	50	60	20	48	50	19	38	10	2	73.0	63.0	0,54
CSTSNF025055	55	65	25	57	55	23	45	12	2	84.5	72.5	0,81
CSTSNF025060	60	70	25	57	55	23	45	12	2	84.5	72.5	0,86
CSTSNF025063	63	73	25	57	55	23	45	12	2	84.5	72.5	0,89
CSTSNF030065	65	75	30	63	65	28	51	12	2	95.5	83.5	1,24
CSTSNF030066	65	80	30	63	65	28	51	12	2	95.5	83.5	1,27
CSTSNF030070	70	80	30	63	65	28	51	12	2	95.5	83.5	1,30
CSTSNF030075	75	90	30	63	65	28	51	12	2	95.5	83.5	1,38
CSTSNF030080	80	92	30	63	65	28	51	12	2	95.5	83.5	1,43
CSTSNF030081	80	95	30	63	65	28	51	12	2	95.5	83.5	1,44

MATERIEL : ACIER St 52.3  
 MATERIAL : STEEL St 52.3





Code Code	ØAL	ØT	ØP	Z	H	S	S1	kg	Boîte Box	Pcs Pcs
CFHR035025	25	35	12.10	18	12	30	2	0,18	Z00CFHR035025	100
CFHR030014030 <b>NEW!</b>	30	40	14.10	16	14	30	2	0,23	Z00CFHR030014030	100
CFHR040032	32	40	16.20	23	17	40	2	0,32	Z50CFHR040032	50
CFHR035016035	35	45	16.10	20	15	35	2	0,34	Z50CFHR035016035	50
CFHR040020040	40	50	20.25	22	18	40	2	0,50	Z25CFHR040020040	25
CFHR050040	40	50	20.50	30	19	49	2	0,60	Z25CFHR050040	25
CFHR045020045	45	55	20.25	25	20	45	2	0,67	Z25CFHR045020045	25
CFHR050025049	50	60	25.25	27	22	49	2	0,80	Z12CFHR050025049	12
CFHR050023050 <b>NEW!</b>	50	60	23.10	28	22	50	2	0,90	Z25CFHR050023050	25
CFHR060050	50	60	25.50	45	25	70	2	1,28	Z12CFHR060050	12
CFHR055025050	55	65	25.25	28	22	50	2	1,01	Z20CFHR055025050	20
CFHR060025047	60	70	25.25	25	22	47	2	1,10	Z12CFHR060025047	12
CFHR070060	60	70	25.50	27	25	52	2	1,25	Z12CFHR070060	12
CFHR060030047	60	70	30.25	25	22	47	2	0,99	Z20CFHR060030047	20
CFHR063025053	63	73	25.25	30	23	53	2	1,41	Z10CFHR063025053	10
CFHR063030053	63	73	30.25	30	23	53	2	1,29	Z10CFHR063030053	10
CFHR065025050	65	75	25.25	28	22	50	2	1,40	Z10CFHR065025050	10
CFHR070030063	70	80	30.25	35	28	63	2	2,00	Z10CFHR070030063	10
CFHR080070	70	80	30.50	37	25	62	2	1,94	Z10CFHR080070	10
CFHR075030060	75	90	30.25	35	25	60	2	2,41	Z05CFHR075030060	5
CFHR080030060	80	90	30.25	32	28	60	2	2,40	Z05CFHR080030060	5
CFHR090080	80	90	30.50	37	25	62	2	2,52	Z05CFHR090080	5
CFHR080040060	80	90	40.25	32	28	60	2	2,07	Z05CFHR080040060	5
CFHR085035063	85	100	35.25	35	28	63	2	3,03	Z05CFHR085035063	5
CFHR090035063	90	105	35.25	35	28	63	2	3,38	Z05CFHR090035063	5
CFHR090040063	90	105	40.25	35	28	63	2	3,15	Z05CFHR090040063	5
CFHR100030063	100	115	30.25	35	28	63	2	4,40	Z05CFHR100030063	5
CFHR115100	100	115	30.50	36	34	70	2	4,90	Z05CFHR115100	5
CFHR100040063	100	115	40.25	35	28	63	2	3,89	Z05CFHR100040063	5
CFHR110040075	110	125	40.25	40	35	75	2	5,87	Z03CFHR110040075	3
CFHR110050075	110	125	50.50	40	35	75	2	5,17	Z03CFHR110050075	3
CFHR120050095	120	140	50.50	50	45	95	2	9,13	Z02CFHR120050095	2
CFHR120060095	120	140	60.50	50	45	95	2	8,18	Z02CFHR120060095	2
CFHR125050095	125	145	50.50	50	45	95	2	9,85	Z02CFHR125050095	2
CFHR125060095	125	145	60.50	50	45	95	2	8,90	Z02CFHR125060095	2
CFHR140060110	140	160	60.50	60	50	110	2	13,58		
CFHR140070110	140	160	70.50	60	50	110	2	12,34		
CFHR150070130	150	170	70.50	75	55	130	2	17,81		
CFHR160080140	160	180	80.50	75	65	140	2	20,68		

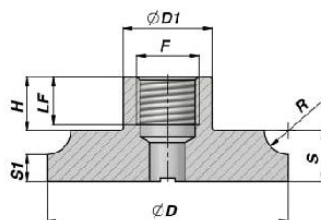
MATERIEL : ACIER S355JO (Fe510C) - S355JR (A105)  
 MATERIAL : STEEL S355JO (Fe510C) - S355JR (A105)

SUR DEMANDE : GRAISSEUR VOIR PAGE 103  
 ON REQUEST : GREASE NIPPLE SEE PAGE 103

**CHMSCFI**

**NEW!**

FOND AVEC ENTREE HUILE  
END PLUG WITH INLET PORT

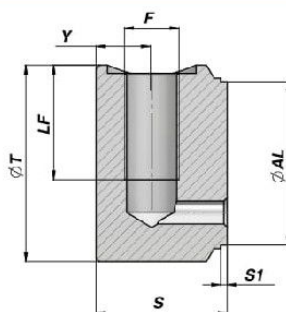


Code Code	ØAL	ØD	S	S1	R	F BSP	LF	H	ØD1	kg	Boîte Box	Pcs Pcs
CHMSCFI040	40	41	12	7.0	5.0	3/8"	15	17	25	0.14	Z00CHMSCFI040	100
CHMSCFI050	50	51	12	5.0	7.0	3/8"	15	17	25	0.18	Z50CHMSCFI050	50
CHMSCFI060	60	61	15	4.0	8.0	3/8"	15	17	25	0.31	Z50CHMSCFI060	50
CHMSCFI070	70	71	15	7.5	7.5	1/2"	16	18	30	0.44	Z50CHMSCFI070	50
CHMSCFI080	80	81	17	9.0	8.0	1/2"	16	18	30	0.64	Z20CHMSCFI080	20
CHMSCFI090	90	91	17	9.0	8.0	1/2"	16	18	30	0.80	Z20CHMSCFI090	20
CHMSCFI100	100	101	20	10.0	10.0	1/2"	16	18	30	1.11	Z10CHMSCFI100	10

MATERIEL : ACIER S355J0 (Fe510C) - S355JR (A105)  
MATERIAL : STEEL S355J0 (Fe510C) - S355JR (A105)

**CFVP**

FOND AVEC ENTREE HUILE  
END PLUG WITH INLET PORT



Code Code	ØAL	ØT	F BSP	LF	Y	S	S1	kg	Boîte Box	Pcs Pcs
CFVP04005004	40	50	1/4"	30	17	40	2	0.54	Z20CFVP04005004	20
CFVP05006006	50	60	3/8"	35	17	40	2	0.77	Z25CFVP05006006	25
CFVP06007006	60	70	3/8"	35	17	40	2	1.10	Z20CFVP06007006	20
CFVP06307306	63	73	3/8"	35	17	40	2	1.17	Z10CFVP06307306	10
CFVP07008006	70	80	3/8"	35	17	40	2	1.41	Z10CFVP07008006	10
CFVP08009508	80	95	1/2"	45	20	50	2	2.49	Z10CFVP08009508	10
CFVP09010508	90	105	1/2"	45	20	50	2	3.11	Z05CFVP09010508	5
CFVP10011508	100	115	1/2"	45	20	50	2	3.70	Z05CFVP10011508	5

PREDISPOSITION POUR VALVE PARACHUTE "VUBA"  
FITTED FOR THE HOSE BURST VALVE "VUBA"

MATERIEL : ACIER S355J0 (Fe510C) - S355JR (A105)  
MATERIAL : STEEL S355J0 (Fe510C) - S355JR (A105)