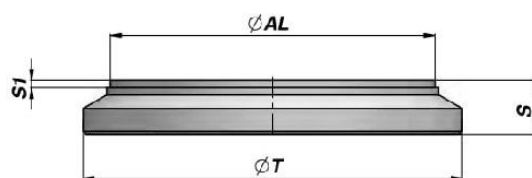


CF



Code Code	$\varnothing AL$	$\varnothing T$	S	S1	kg	Boîte Box	Pcs Pcs
CF00025035	25	35	7	2	0,04	Z0CCF00025035	250
CF00030040	30	40	8	2	0,06	Z0CCF00030040	250
CF00032042	32	42	8	2	0,10	Z0CCF00032042	250
CF00035045	35	45	10	2	0,11	Z0BCF00035045	200
CF00040050	40	50	10	2	0,13	Z0ACF00040050	150
CF00045055	45	55	10	2	0,16	Z00CF00045055	100
CF00050060	50	60	10	2	0,19	Z00CF00050060	100
CF00055065	55	65	12	2	0,28	Z50CF00055065	50
CF00060070	60	70	12	2	0,33	Z50CF00060070	50
CF00063073	63	73	12	2	0,35	Z50CF00063073	50
CF00065075	65	75	12	2	0,38	Z50CF00065075	50
CF00065080	65	80	12	2	0,40	Z50CF00065080	50
CF00070080	70	80	12	2	0,43	Z50CF00070080	50
CF00070085	70	85	12	2	0,45	Z25CF00070085	25
CF00075090	75	90	12	2	0,53	Z25CF00075090	25
CF00080090	80	90	12	2	0,55	Z25CF00080090	25
CF00080095	80	95	12	2	0,58	Z25CF00080095	25
CF00085100	85	100	15	2	0,77	Z25CF00085100	25
CF00090105	90	105	15	2	0,86	Z25CF00090105	25
CF00100115	100	115	15	2	1,05	Z25CF00100115	25
CF00110125	110	125	15	2	1,34	Z15CF00110125	15
CF00110130	110	130	15	2	1,40	Z15CF00110130	15
CF00120140	120	140	18	2	2,00	Z10CF00120140	10
CF00125145	125	145	18	2	2,11	Z10CF00125145	10
CF00140160	140	160	18	2	2,67		
CF00150170	150	170	20	2	3,33		
CF00160180	160	180	20	2	3,79		

MATERIEL : ACIER S355J0 (Fe510C) - S355JR (A105)

MATERIAL : STEEL S355J0 (Fe510C) - S355JR (A105)

EN CAS DE PICS DE PRESSION NOUS VOUS RECOMMANDONS DE SOUDER DES FIXATIONS POUR EVITER DEFORMATIONS DU FOND.

EN VARIANTE VOUS POUVEZ EMPLOYER LES FONDS INTERNES TYPE "CFI"

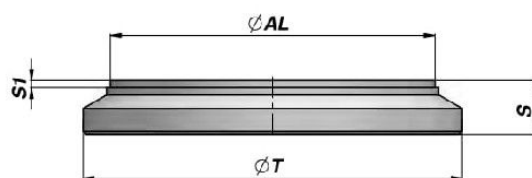
THESE PLUGS CAN BEND UNDER PEAK PRESSURE.

WE RECOMMEND TO WELD ENDS TO ACHIEVE EXTRA RIGIDITY OTHERWISE USE INTERNAL END PLUGS "CFI" TYPE.

EN CAS DE TRAVAIL INTENSIF, ON VOUS CONSEILLE D'UTILISER LES FONDS SERIE "CFPM"

IN CASE OF CONTINUOUS WORK PLEASE USE "CFPM" END PLUGS.

CF



Code Code	$\varnothing AL$	$\varnothing T$	S	S1	kg	Boîte Box	Pcs Pcs
CF00025035	25	35	7	2	0,04	Z0CCF00025035	250
CF00030040	30	40	8	2	0,06	Z0CCF00030040	250
CF00032042	32	42	8	2	0,10	Z0CCF00032042	250
CF00035045	35	45	10	2	0,11	Z0BCF00035045	200
CF00040050	40	50	10	2	0,13	Z0ACF00040050	150
CF00045055	45	55	10	2	0,16	Z00CF00045055	100
CF00050060	50	60	10	2	0,19	Z00CF00050060	100
CF00055065	55	65	12	2	0,28	Z50CF00055065	50
CF00060070	60	70	12	2	0,33	Z50CF00060070	50
CF00063073	63	73	12	2	0,35	Z50CF00063073	50
CF00065075	65	75	12	2	0,38	Z50CF00065075	50
CF00065080	65	80	12	2	0,40	Z50CF00065080	50
CF00070080	70	80	12	2	0,43	Z50CF00070080	50
CF00070085	70	85	12	2	0,45	Z25CF00070085	25
CF00075090	75	90	12	2	0,53	Z25CF00075090	25
CF00080090	80	90	12	2	0,55	Z25CF00080090	25
CF00080095	80	95	12	2	0,58	Z25CF00080095	25
CF00085100	85	100	15	2	0,77	Z25CF00085100	25
CF00090105	90	105	15	2	0,86	Z25CF00090105	25
CF00100115	100	115	15	2	1,05	Z25CF00100115	25
CF00110125	110	125	15	2	1,34	Z15CF00110125	15
CF00110130	110	130	15	2	1,40	Z15CF00110130	15
CF00120140	120	140	18	2	2,00	Z10CF00120140	10
CF00125145	125	145	18	2	2,11	Z10CF00125145	10
CF00140160	140	160	18	2	2,67		
CF00150170	150	170	20	2	3,33		
CF00160180	160	180	20	2	3,79		

MATERIEL : ACIER S355J0 (Fe510C) - S355JR (A105)

MATERIAL : STEEL S355J0 (Fe510C) - S355JR (A105)

EN CAS DE PICS DE PRESSION NOUS VOUS RECOMMANDONS DE SOUDER DES FIXATIONS POUR EVITER DEFORMATIONS DU FOND.

EN VARIANTE VOUS POUVEZ EMPLOYER LES FONDS INTERNES TYPE "CFI"

THESE PLUGS CAN BEND UNDER PEAK PRESSURE.

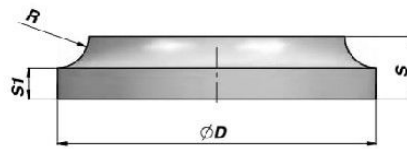
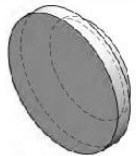
WE RECOMMEND TO WELD ENDS TO ACHIEVE EXTRA RIGIDITY OTHERWISE USE INTERNAL END PLUGS "CFI" TYPE.

EN CAS DE TRAVAIL INTENSIF, ON VOUS CONSEILLE D'UTILISER LES FONDS SERIE "CFPM"

IN CASE OF CONTINUOUS WORK PLEASE USE "CFPM" END PLUGS.

FOND INTERNE  
INTERNAL END PLUG

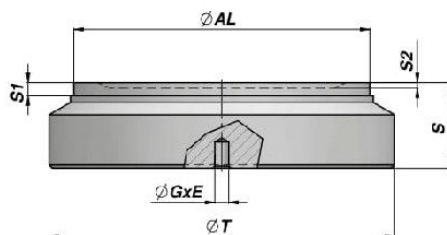
CFI



Code Code	ØAL	ØD	S	S1	R	kg	Boîte Box	Pcs Pcs
CFI0260008	25	26	8	4.0	4.0	0,03	Z0BCFI0260008	200
CFI0310010	30	31	10	5.0	5.0	0,05	Z0BCFI0310010	200
CFI0330010	32	33	10	5.0	5.0	0,05	Z0BCFI0330010	200
CFI0360010	35	36	10	5.0	5.0	0,06	Z00CFI0360010	100
CFI0410012	40	41	12	5.0	7.0	0,09	Z00CFI0410012	100
CFI0460012	45	46	12	5.0	7.0	0,12	Z00CFI0460012	100
CFI0510012	50	51	12	5.0	7.0	0,15	Z00CFI0510012	100
CFI0560015	55	56	15	7.0	8.0	0,23	Z50CFI0560015	50
CFI0610015	60	61	15	7.0	8.0	0,27	Z50CFI0610015	50
CFI0640015	63	64	15	7.0	8.0	0,30	Z50CFI0640015	50
CFI0660015	65	66	15	7.0	8.0	0,33	Z50CFI0660015	50
CFI0710015	70	71	15	7.5	7.5	0,39	Z50CFI0710015	50
CFI0760017	75	76	17	9.0	8.0	0,52	Z25CFI0760017	25
CFI0810017	80	81	17	9.0	8.0	0,60	Z25CFI0810017	25
CFI0860017	85	86	17	9.0	8.0	0,68	Z25CFI0860017	25
CFI0910017	90	91	17	9.0	8.0	0,80	Z25CFI0910017	25
CFI1010020	100	101	20	10.0	10.0	1,10	Z20CFI1010020	20
CFI1110022	110	111	22	11.0	11.0	1,43	Z10CFI1110022	10
CFI1210024	120	121	24	12.0	12.0	1,86	Z06CFI1210024	6
CFI1260024	125	126	24	12.0	12.0	2,03	Z06CFI1260024	6
CFI1410030	140	141	30	17.0	13.0	3,25	Z05CFI1410030	5
CFI1510035	150	151	35	20.0	15.0	4,32		
CFI1610040	160	161	40	25.0	15.0	5,75		

Ø AL = TUBE; ALESAGE - TUBE; BORE

MATERIEL : ACIER S355JO (Fe510C) - S355JR (A105)  
MATERIAL : STEEL S355JO (Fe510C) - S355JR (A105)POUR VERIN AVEC BRIDE  
FOR CYLINDER WITH FLANGE



Code Code	ØAL	ØT	S	S1	S2	ØG x E	kg	Boîte Box	Pcs Pcs
CFPM060050017	50	60	17	4	2	ø 4.25 x 6	0,31	Z50CFPM060050	50
CFPM065050017	50	65	17	4	-	ø 4.25 x 6	0,36	Z50CFPM065050	50
CFPM065050020 (A) <b>NEW!</b>	50	65	20	2	-	ø 4.25 x 6	0,46	Z50CFPM065051	50
CFPM070060019	60	70	19	4	2	ø 4.25 x 6	0,50	Z50CFPM070060	50
CFPM075060019	60	75	19	4	-	ø 4.25 x 6	0,56	Z25CFPM075060	25
CFPM075060020 (A) <b>NEW!</b>	60	75	20	2	-	ø 4.25 x 6	0,62	Z25CFPM075061	25
CFPM075063019	63	75	19	4	-	ø 4.25 x 6	0,59	Z25CFPM075063	25
CFPM075063022 (A) <b>NEW!</b>	63	75	22	2	-	ø 4.25 x 6	0,71	Z25CFPM075064	25
CFPM080070022	70	80	22	4	2	ø 4.25 x 6	0,77	Z20CFPM080070	20
CFPM085070022	70	85	22	4	2	ø 4.25 x 6	0,84	Z20CFPM085070	20
CFPM085070028 (A) <b>NEW!</b>	70	85	28	2	-	ø 4.25 x 6	1,17	Z20CFPM085071	20
CFPM090075022	75	90	22	4	-	ø 4.25 x 6	0,98	Z20CFPM090075	20
CFPM095080025	80	95	25	4	2	ø 4.25 x 6	1,22	Z20CFPM095080	20
CFPM100080025	80	100	25	4	2	ø 4.25 x 6	1,31	Z10CFPM100080	10
CFPM100080030 (A) <b>NEW!</b>	80	100	30	2	-	ø 4.25 x 6	1,71	Z10CFPM100081	10
CFPM100085025	85	100	25	4	-	ø 4.25 x 6	1,41	Z10CFPM100085	10
CFPM105090026	90	105	26	4	-	ø 4.25 x 6	1,63	Z10CFPM105090	10
CFPM110090026	90	110	26	4	-	ø 4.25 x 6	1,73	Z10CFPM110090	10
CFPM110090035 (A) <b>NEW!</b>	90	110	35	2	-	ø 4.25 x 6	2,45	Z10CFPM110091	10
CFPM115100030	100	115	30	4	2	ø 6.25 x 8	2,22	Z10CFPM115100	10
CFPM120100030	100	120	30	4	2	ø 6.25 x 8	2,36	Z06CFPM120100	6
CFPM120100035 (A) <b>NEW!</b>	100	120	35	2	-	ø 6.25 x 8	2,93	Z06CFPM120101	6
CFPM125110031	110	125	31	7	-	ø 6.25 x 8	2,74	Z06CFPM125110	6
CFPM130110031	110	130	31	7	-	ø 6.25 x 8	2,87	Z06CFPM130110	6
CFPM130110038 (A) <b>NEW!</b>	110	130	38	2	-	ø 6.25 x 8	3,77	Z06CFPM130111	6
CFPM140120034	120	140	34	7	-	ø 6.25 x 8	3,72	Z06CFPM140120	6
CFPM145120034	120	145	34	7	-	ø 6.25 x 8	3,87	Z04CFPM145120	4
CFPM145120042 (A) <b>NEW!</b>	120	145	42	2	-	ø 6.25 x 8	5,15	Z04CFPM145121	4
CFPM145125035	125	145	35	7	-	ø 6.25 x 8	4,13	Z04CFPM145125	4
CFPM145125045 (A) <b>NEW!</b>	125	145	45	2	-	ø 6.25 x 8	5,62	Z04CFPM145126	4
CFPM150125035	125	150	35	7	-	ø 6.25 x 8	4,30		
CFPM160140040	140	160	40	7	-	ø 6.25 x 8	5,86		
CFPM165140050 (A) <b>NEW!</b>	140	165	50	2	-	ø 6.25 x 8	8,06		
CFPM170140040	140	170	40	7	-	ø 6.25 x 8	6,34		
CFPM170150042	150	170	42	7	-	ø 6.25 x 8	7,00		
CFPM180150042	150	180	42	7	-	ø 6.25 x 8	7,55		
CFPM180150060 (A) <b>NEW!</b>	150	180	60	2	-	ø 6.25 x 8	11,51		
CFPM180160045	160	180	45	7	-	ø 6.25 x 8	8,48		
CFPM190160045	160	190	45	10	-	ø 6.25 x 8	8,92		
CFPM190160065 (A) <b>NEW!</b>	160	190	65	2	-	ø 6.25 x 8	13,96		

(A) = Conçu suivant le standard DNV PART 4 CHAPTER 7 RULES SHIPS / HIGH SPEED, LIGHT CRAFT AND NAVAL SURFACE CRAFT – PRESSURE

(A) = Designed in accordance with the norm DNV PART 4 CHAPTER 7 RULES SHIPS / HIGH SPEED, LIGHT CRAFT AND NAVAL SURFACE CRAFT – PRESSURE

MATERIEL : ACIER S355JO (Fe510C) - S355JR (A105)

MATERIAL : STEEL S355JO (Fe510C) - S355JR (A105)