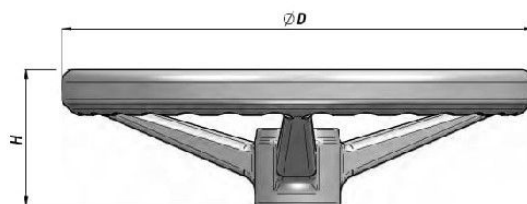


AV

VOLANT  
STEERING-WHEEL



Code Code	Type Type	ØD	H	Cône Taper	kg
AV00320001	360	352	105	1.20 (Type 1)	1,80
AV00320105	390	387	140	1.20 (Type 1)	2,00

AUTRES DIAMETRES SUR DEMANDE - OTHER DIMENSIONS ON REQUEST

AT

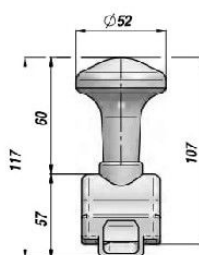
BOUCHON POUR VOLANT  
CAP FOR STEERING-WHEEL



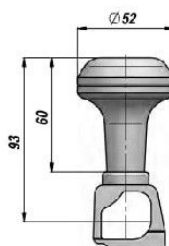
Code Code	Pour volant For steering-wheel	ØD	H	kg x 100
AT00470064	360/390	62	20	1,30

AP

BOULE POUR VOLANT  
HARD KNOB FOR STEERING-WHEEL



Type 360



Type 390

Code Code	Pour volant For steering-wheel	kg x 100
AP00340212	Type 360	8,50
AP00340263	Type 390	7,60

# • PP 006 range

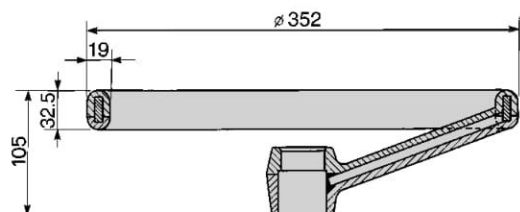


con armatura metallica  
with steel frame

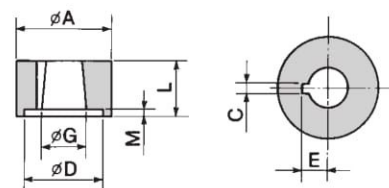
Ø 360

Realizzato in polipropilene  
Possibilità di realizzare mozzi speciali

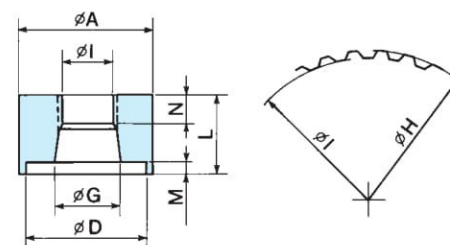
Made by polypropylene  
Special hubs on request



con cava per chiavetta  
with slot for keyway



con brocciatura  
with pot broach



Optional su richiesta - *Optional on request*



0047.0064



bipolare - *bipolar*  
0047.0103  
unipolare - *monopolar*  
0047.0104



0034.0477



0034.1027



0034.1018

P/M	A	DENTI TEETH	C	D	E	CONO TAPER	G	H	I	L	M	N
0032.0193	50	-	5	-	14,80	1:20	24,52	-	-	30	-	-
0032.0203	50	36	-	-	-	1:19,26	22,40	22,05	20,80	30	-	15
0032.0204	50	-	5	-	13,2	1:7,69	21,47	-	-	30	-	-
0032.0207	50	48	-	-	-	1:3,43	21,56	19,18	18,20	30	-	20
0032.0209	50	-	5	35	10,74	1:20	17,62	-	-	30	3	-
0032.0210	50	36	-	-	-	1:19,26	22,12	22,05	20,78	22	-	11
0032.0211 (●)	50	36	-	-	-	1:19,26	22,40	22,05	20,80	30	-	12
0032.0219	50	36	-	-	-	1:10,7	20,90	-	18,1	27	-	12
0032.0220	50	36	-	-	-	1:16	21,68	20,68	19,38	30	-	15
0032.0221	50	38	-	-	-	-	-	20,20	18	29	-	27
0032.0223	50	-	5	-	14,00	1:16	21,81	-	-	30	-	-
0032.0224	50	-	5	-	12,74	1:20	21,62	-	-	23	-	-
0032.0225	50	-	5	44	11,90	1:10	19,20	-	-	30	2	-
0032.0226	50	-	5	44	13,30	1:8	22	-	-	30	2	-
0032.0227	50	48	-	-	-	1:3,43	20,85	19,18	18,20	27	-	18
0032.0343	50	36	-	-	-	1:20	22,19	22,05	20,80	27,50	-	12,7
0032.0379	50	-	5	-	11,15	1:20	17,65	-	-	30	-	-
0032.1143 (■)	50	-	5	-	14,8	1:20	24,52	-	-	30	-	-

(●) Con fori filettati per l'estrazione - *With threaded holes for pooling up.*

(■) Con pomello STD - *With STD knob.*

# • PP 026 range

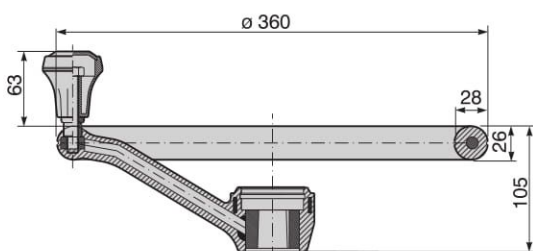
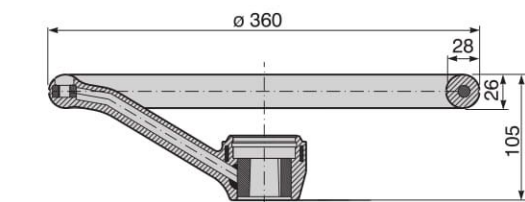


con armatura metallica  
with steel frame

Ø 360

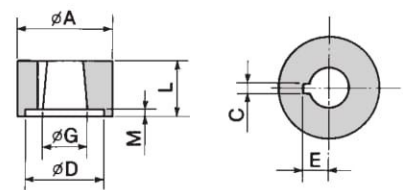
Realizzato in polipropilene  
Possibilità di realizzare mozzi speciali

Made by polypropylene  
Special hubs on request

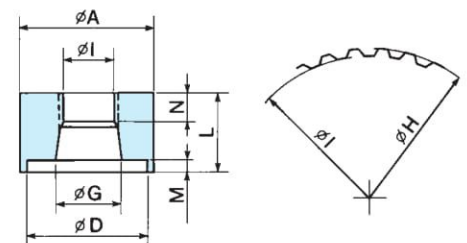


CON POMELLO - WITH KNOB

con cava per chiavetta  
with slot for keyway



con brocciatura  
with pot broach



Optional su richiesta - *Optional on request*



0047.0221



0034.1080



0034.1068



0034.1084



0034.1081

P/W	A	DENTI TEETH	C	D	E	CONO TAPER	G	H	I	L	M	N
0032.0395 (■)	45	-	5	-	15,4	1:20	24,6	-	-	32	-	-
0032.0455	45	36	-	36	-	1:19,26	22,31	22,05	20,80	32	6	12,5
0032.0459	45	-	4,79	-	13,29	1:16	21,91	-	-	32	-	-
0032.0566	45	-	5	42	14	1:7,6	22	-	-	32	4	-
0032.0567	45	-	5	-	12,3	1:7,6	21,6	-	-	26	-	-
0032.0569	45	36	-	-	-	1:19,26	22,18	22,05	20,80	26	-	12,45
0032.0889	45	-	5	-	11,8	1:8,25	19,58	-	-	32	-	-

(■) Con pomello STD - *With STD knob.*