

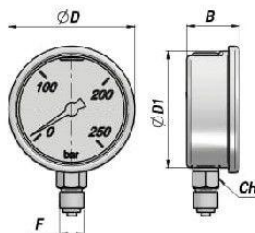
Température d'exercice - Working temperature : -20°C - +80°C

MATERIEL CORPS : OTTONE

BODY MATERIAL : BRASS

MANOMETRE EN BAIN DE GLYCERINE - FIXATION RADIALE
GLYCERINE PRESSURE GAUGE - RADIAL FITTING

AMGR



Code Code	DN	F BSP	Echelle Range bar	B	CH	ØD	kg
AMGR063010	63		0 / 10				0,20
AMGR063025	63		0 / 25				0,20
AMGR063060	63		0 / 60				0,20
AMGR063100	63	1/4"	0 / 100	28.0	14	68.0	0,20
AMGR063160	63		0 / 160				0,20
AMGR063250	63		0 / 250				0,20
AMGR063400	63		0 / 400				0,20
AMGR063600	63		0 / 600				0,20
AMGR100010	100		0 / 10				0,40
AMGR100025	100		0 / 25				0,40
AMGR100060	100		0 / 60				0,40
AMGR100100	100	1/2"	0 / 100	33.9	17	109.8	0,40
AMGR100160	100		0 / 160				0,40
AMGR100250	100		0 / 250				0,40
AMGR100400	100		0 / 400				0,40
AMGR100600	100		0 / 600				0,40

MATERIEL CORPS : BOITE INOX

BODY MATERIAL : STAINLESS STEEL CASING

CARATTERISTICHE COSTRUTTIVE

Manometri per tutti i fluidi non corrosivi a temperature tra i -20 +80°C compatibili con rame e sue leghe (è sempre necessario indicare il fluido usato). Movimento amplificatore di precisione in ottone. Quadrante in alluminio verniciato a forno.

Elemento manometrico:

– tubo Bourdon in lega di rame per pressioni da -1 a 40 bar.

– tubo a spirale in lega di rame per pressioni da 50 a 1000 bar.

Saldature in lega di stagno.

Grado di protezione Ip 65.

Particolarmente robusti, usati per sistemi idraulici, pompe, compressori, macchine utensili idropultrici, sistemi frigoriferi.



CONSTRUCTIONAL FEATURES

Pressure gauges for all non-corrosive fluids at temperatures between -20 and +80 °C, compatible with copper and its alloys (always indicate the utilized fluid).

Precision amplifier movement in brass.

Dial in stove-enamelled aluminium.

Pressure gauge parts:

– Bourdon tube in copper alloy for pressure ratings from -1 to 40 bar.

– spiral tube in copper alloy for pressure ratings from 50 to 1,000 bar.

Welds in tin alloy.

Protection degree Ip 65.

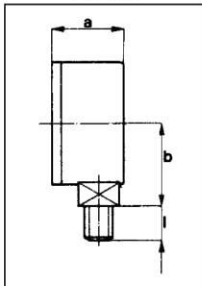
Particularly sturdy, used for plumbing systems, pumps, compressors, machine tools, high pressure water cleaners, refrigerating systems.

DIMENSIONI E SISTEMA DI MONTAGGIO

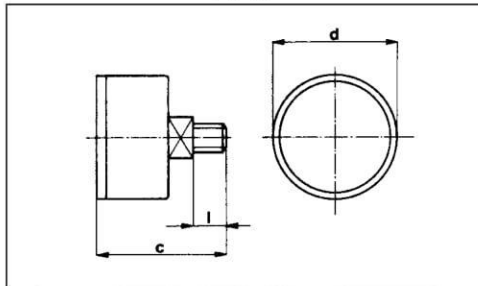
DIMENSIONS AND ASSEMBLY SYSTEM

nom.	DIMENSIONI · Dimensions												
	a	b	c	d	e	f	g	h	i	l	m	n	o
40	27		39	48		41,7							
50	27.80	40.5	39	57	4.5	50.50	69.5	61	3.6		5	58,5	
63	58	76	46	68.5	9	62	87	75	3.6		6.5	79	
100	38	69	50	110	9	98.50	132	117	4		6	126	

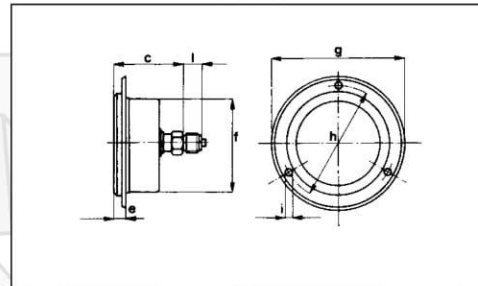
TIPO D
TYPE D



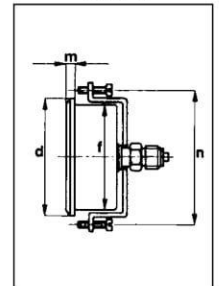
TIPO F
TYPE F



TIPO B
TYPE B



TIPO G
TYPE G



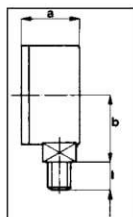
RACCORDI DI SERIE · Standard unions

BSP DIN 259				BSPT DIN 2999				BSP DIN 16288				NPT ANSI B2.1			
1/8	1/4	3/8	1/2	1/8	1/4	3/8	1/2	1/8	1/4	3/8	1/2	1/8	1/4		

N.B.: su richiesta si eseguono filettature diverse da quelle indicate in tabella
Different threads from those indicated in the table can be supplied on request

Le caratteristiche e le misure degli apparecchi elencati nel presente catalogo non sono impegnative, la s.r.l. si riserva, per ragioni di ordine tecnico, di apportare quelle modifiche che riterrà più opportune.
The features and measurements of the equipment listed in this catalogue are not binding. For technical reasons, s.r.l. reserves the right to make any modifications considered opportune.

MODELLO RADIALE



BOTTOM MODEL

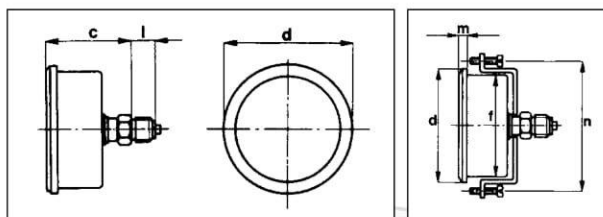
VERSIONE BASE · Basic version

codice code number	tipo typ	∅	cassa in acciaio casing in steel	glicerina glycerine	trasparente in metacrilato transparent in metacrylate	classe 1,6 class 1,6	peso (grammi) weight (grams)	n.pz per scatola items per carton
M 435 RL	D	40	✓	✓	✓	✓	103	150
M 535 RL	D	50	✓	✓	✓	✓	153	100
M 635 RL	D	63	✓	✓	✓	✓	195	100
M 105 RL	D	100	✓	✓	✓		550	50

OPZIONI · Option

codice code number	tappo di strozzamento throttling plug	classe I class I	saldatura in argento soldered	vite di calibrazione micrometrica micrometric calibration screw	silicone silicone	flangia posteriore rear flange
M 435 RL	✓		✓		✓	
M 535 RL	✓		✓		✓	
M 635 RL	✓		✓	✓	✓	✓
M 105 RL	✓	✓	✓	✓	✓	✓

MODELLO POSTERIORE



CENTER BACK MODEL

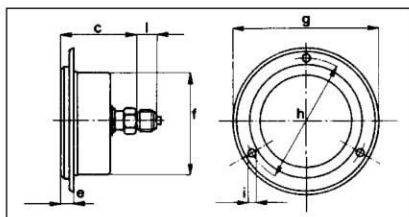
VERSIONE BASE · Basic version

codice code number	tipo typ	∅	cassa in acciaio inossidabile casing in stainless steel	glicerina glycerine	trasparente in metacrilato transparent in metacrylate	classe 1,6 class 1,6	peso (grammi) weight (grams)	n.pz per scatola items per carton
M 438 PBL	F	40	✓	✓	✓	✓	110	150
M 538 PBL	F	50	✓	✓	✓	✓	150	100
M 638 PBL	F	63	✓	✓	✓	✓	215	100
M 108 PBL	F	100	✓	✓	✓		500	25

OPZIONI · Option

codice code number	tappo di strozzamento throttling plug	classe I class I	saldatura in argento soldered	vite di calibrazione micrometrica micrometric calibration screw	silicone silicone	staffa tipo G bracket G
M 438 PBL	✓		✓	✓	✓	
M 538 PBL	✓		✓	✓	✓	
M 638 PBL	✓		✓	✓	✓	✓
M 108 PBL	✓	✓	✓	✓	✓	✓

**MODELLO FLANGIATO
POSTERIORE**



REAR FLANGED VERSION

VERSIONE BASE · Basic version

codice code number	tipo typ	∅	cassa in acciaio casing in steel	glicerina glycerine	trasparente in metacrilato transparent in metacrylate	classe 1,6 class 1,6	peso (grammi) weight (grams)	n.pz per scatola items per carton
M 437 PFL	B	40	✓	✓	✓	✓	118	100
M 537 PFL	B	50	✓	✓	✓	✓	158	60
M 637 PFL	B	63	✓	✓	✓	✓	235	60
M 107 PFL	B	100	✓	✓	✓			

OPZIONI · Option

codice code number	tappo di strozzamento throtling plug	classe I class I	saldatura in argento soldered	silicone silicone
M 437 PFL	✓		✓	✓
M 537 PFL	✓		✓	✓
M 637 PFL	✓		✓	✓
M 107 PFL	✓	✓	✓	✓

**MODELLO IN GLICERINA
CASSA INOX**

INOX GLYCERINE GAUGES

codice code number	∅	attacco al processo connection	unità pressure rating	posizione dell'attacco model	campo di misura range
M435RL	40	1/8 Bsp	Bar/psi	radiale bottom	-1/0 0/1,6 0/2,5 0/4 0/6 0/10 0/16 0/25 0/60 0/160 0/250 0/400 0/600
M535RL	50	1/4 Bsp	Bar/psi	radiale bottom	-1/0 0/1,6 0/2,5 0/4 0/6 0/10 0/16 0/25 0/60 0/160 0/250 0/400 0/600
M635RL	63	1/4 Bsp	Bar/psi	radiale bottom	-1/0 0/1 0/1,6 -1/+1,5 -1/+3 -1/+5 -1/+9 0/2,5 0/4 0/6 0/10 0/16 0/25 0/40 0/60 0/80 0/100 0/160 0/250 0/315 0/400 0/600 0/1000
M105RL	100	1/2 Bsp	Bar/psi	radiale bottom	-1/0 0/1 0/1,6 -1/+3 0/2,5 0/4 0/6 0/10 0/16 0/25 0/40 0/60 0/80 0/100 0/160 0/250 0/315 0/400 0/600 0/1000
M438PBL	40	1/8 Bsp	Bar/psi	posteriore back	-1/0 0/1,6 0/2,5 0/4 0/6 0/10 0/16 0/25 0/60 0/160 0/315 0/250 0/400 0/600
M538PBL	50	1/4 Bsp	Bar/psi	posteriore back	-1/0 0/1,6 0/2,5 0/4 0/6 0/10 0/16 0/25 0/60 0/160 0/250 0/315 0/400 0/600
M638PBL	63	1/4 Bsp	Bar/psi	posteriore back	-1/0 0/1 0/1,6 -1/+1,5 -1/+3 -1/+5 -1/+9 0/2,5 0/4 0/6 0/10 0/16 0/25 0/40 0/60 0/80 0/100 0/160 0/250 0/315 0/400 0/600 0/1000
M108PBL	100	1/2 Bsp	Bar/psi	posteriore back	-1/0 0/1 0/1,6 -1/+3 0/2,5 0/4 0/6 0/10 0/16 0/25 0/40 0/60 0/80 0/100 0/160 0/250 0/315 0/400 0/600 0/1000

**MANOMETRI IN GLICERINA
 MONTAGGIO A PANNELLO**

**GLYCERINE REAR FLANGED
 VERSION**

codice code number	∅	attacco al processo connection	unità pressure rating	posizione dell'attacco model	campo di misura range
M537PFL	50	1/4 Bsp	Bar/psi	posteriore back	-1/0 0/1,6 0/2,5 0/4 0/6 0/10 0/16 0/25 0/60 0/160 0/250 0/315 0/400 0/600
M637PFL	63	1/4 Bsp	Bar/psi	posteriore back	-1/0 0/1 0/1,6 -1/+1,5 -1/+3 -1/+5 -1/+9 0/2,5 0/4 0/6 0/10 0/16 0/25 0/40 0/60 0/80 0/100 0/160 0/250 0/315 0/400 0/600 0/1000
M107PFL	100	1/2 Bsp	Bar/psi	posteriore back	-1/0 0/1 0/1,6 -1/+3 0/2,5 0/4 0/6 0/10 0/16 0/25 0/60 0/100 0/160 0/250 0/315 0/400 0/600

**MANOMETRI SERIE LX
 DIAMETRO 63
 BAR /PSI/ MPA
 RADIALE E POSTERIORE**



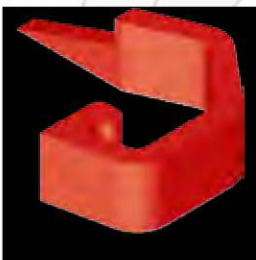
**PRESSURE GAUGE SERIE LX ∅ 63
 BAR /PSI /MPA
 RADIAL CONNECTION AND REAR**

**OPZIONE A RICHIESTA
 PER DIAMETRO 63
 GHIERA CON LANCETTA
 REGOLABILE ROSSA
 SUL TRASPARENTE
 IN PLASTICA**



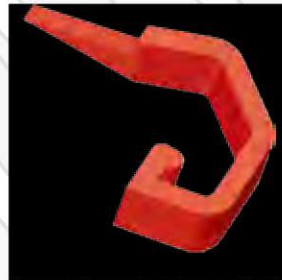
**OPTION UNDER REQUEST FOR ∅ 63
 ADJUSTABLE RED POINTER
 ON THE WINDOWS**

P01651.01



Lancetta indice rossa ∅ 100
 Red pointer ∅ 100

P01651.00



Lancetta indice rossa ∅ 63
 Red pointer ∅ 63

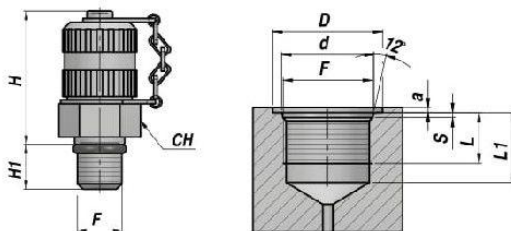


Esempio di applicazione
 Example of application

AM-E

NEW!

PRISE DE PRESSION M16x2 - TYPE "E"
 THREADED COUPLING M16x2 - TYPE "E"



TYPE E

Code Code	F	PN bar	H	H1	CH	d	D	L	L1	S	a	kg x100
AM0171X20C *	7/16"-20UNF	630	37	9	17	12.4	17	11.5	14.0	2.4	1.6	6,50
AM0112X20C	1/2"-20UNF	630	37	10	17	14.0	18	11.5	14.0	2.4	1.6	6,80
AM0191X18C *	9/16"-18UNF	630	37	10	19	15.6	20	12.7	15.5	2.5	1.6	7,60
AM0134X16C	3/4"-16UNF	630	37	14	22	20.5	25	16.0	20.0	2.6	2.4	8,00

PN = Pression Nominale - Nominal pressure

* = SUR DEMANDE : ACIER INOX AISI316 - ON REQUEST : STAINLESS STEEL AISI 316

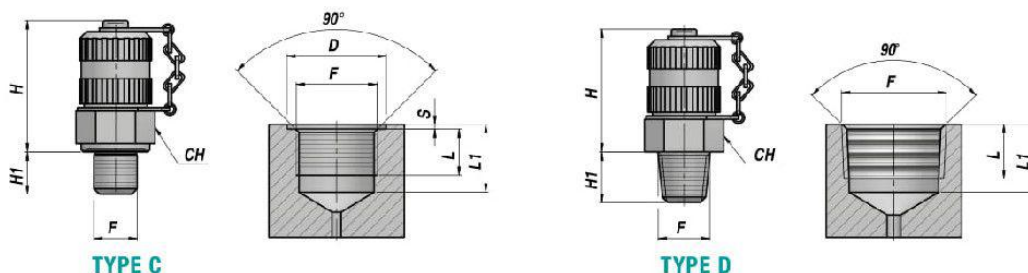
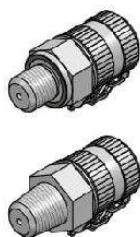
MATERIEL : ACIER

MATERIAL : STEEL

AM-C / AM-D

NEW!

PRISE DE PRESSION M16x2 - TYPE "C" ET TYPE "D"
 THREADED COUPLING M16x2 - TYPE "C" AND TYPE "D"



TYPE C

TYPE D

Code Code	Type Type	F	PN	H	H1	CH	D	L	L1	S	kg x100
AM0718G00C *	C	1/8"	630	37	8	17	17	10.0	13.5	1.0	6,80
AM0714G00C *	C	1/4"	630	37	12	19	20	14.0	18.5	1.0	7,50
AM0738G00C *	C	3/8"	630	37	14	22	24	16.0	18.5	1.5	9,40
AM0712G00C *	C	1/2"	630	37	15	27	30	18.0	24.0	1.5	12,60
AM0410X10C *	C	M10x1	630	37	8	17	17	10.0	13.5	1.0	6,80
AM0612X15C *	C	M12x1.5	630	37	10	17	18	12.0	18.5	1.0	6,90
AM0614X15C *	C	M14x1.5	630	37	12	19	20	14.0	18.5	1.0	7,60
AM0616X15C	C	M16x1.5	630	37	12	22	22	14.0	18.5	1.5	8,50
AM0818280C *	D	1/8"	400	37	10	17	-	5.5	12.0	-	6,30
AM0814190C *	D	1/4"	630	37	12	19	-	8.5	13.5	-	7,40
AM0838190C	D	3/8"	630	37	14	22	-	12.0	20.0	-	8,00

PN = Pression Nominale - Nominal pressure

* = SUR DEMANDE : ACIER INOX AISI316 - ON REQUEST : STAINLESS STEEL AISI 316

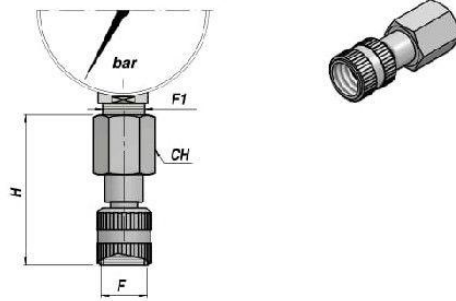
MATERIEL : ACIER

MATERIAL : STEEL

SUPPORT MANOMETRE
GAUGE ADAPTER

NEW!

AM20

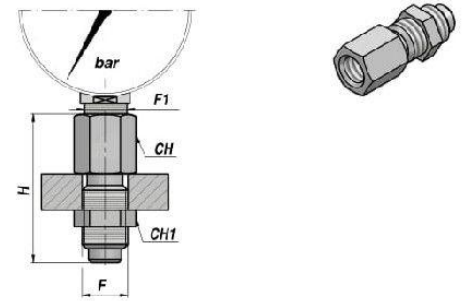


SUPPORT MANOMETRE
GAUGE ADAPTER

NEW!

AM18

CLOISON
BULKHEAD ADAPTER



Code Code	F	F1	PN	H	CH	kg x100
AM20140000 *	M16x2	1/4"	630	50	19	7,20
AM20120000 *	M16x2	1/2"	630	55	27	11,60

Code Code	F	F1	PN	H	CH/CH1	kg x100
AM18140000 *	M16x2	1/4"	630	50	19/19	6,20
AM18120000 *	M16x2	1/2"	630	57	27/19	11,10

PN = Pression Nominale - Nominal pressure

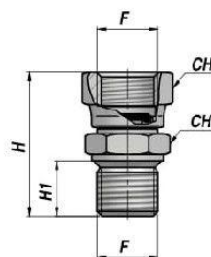
* = SUR DEMANDE : ACIER INOX AISI316 - ON REQUEST : STAINLESS STEEL AISI 316

MATERIEL : ACIER
MATERIAL : STEEL

CONNECTION SUPPORT MANOMETRE ORIENTABLE
SWIVEL PRESSURE GAUGE CONNECTION

NEW!

AM18.M



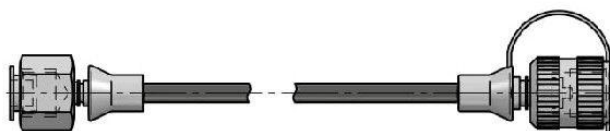
Code Code	F	PN	H	H1	CH	kg x100
AM1814M000 *	1/4"	400	34	11	17	3,50
AM1812M000 *	1/2"	400	46	15	27	14,13

PN = Pression Nominale - Nominal pressure

* = SUR DEMANDE : ACIER INOX AISI316 - ON REQUEST : STAINLESS STEEL AISI 316

SUR DEMANDE : RONDELLE EN CUIVRE - ON REQUEST : COPPER WASHER

MATERIEL : ACIER
MATERIAL : STEEL

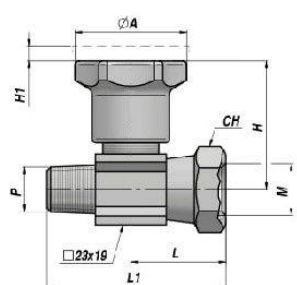


SUR DEMANDE: TUYAUX CAPILLAIRES POUR HAUTE PRESSION AVEC RACCORDS
ON REQUEST : MICRO HOSE FOR HYGH PRESSURE WITH FITTINGS

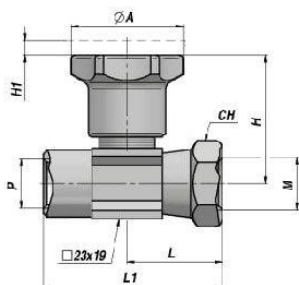
EMIL

NEW!

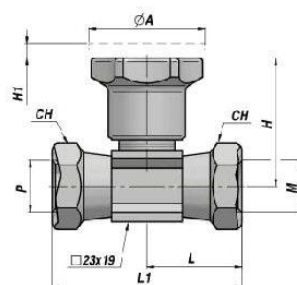
ROBINET D'EXCLUSION MANOMETRE - TYPE EN LIGNE
GAUGE ISOLATOR - LINE TYPE



A



B



C

Code Code	P	M BSP	Q MAX l/min	P MAX bar	Type Type	L1	L	H	H1	ØA	CH	kg
DFPE1G0400	1/4" BSPT	1/4"	5	350	EMIL 01-A	50	27	38	4	30	19	0,13
DFPE1G0401	1/4" BSP	1/4"	5	350	EMIL 01-B	48	27	38	4	30	19	0,14
DFPE1G0402	1/4" BSP	1/4"	5	350	EMIL 01-C	50	27	38	4	30	19	0,15

SUR DEMANDE : ECROU TRAVERSEE DE CLOISON - ON REQUEST : PANEL MOUNTING NUT

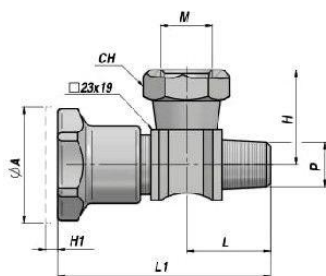
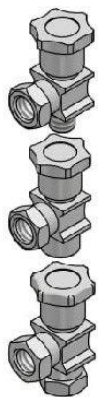
MATERIEL CORPS : ACIER
BODY MATERIAL : STEEL

MONTAGE EN LIGNE
LINE MOUNTING

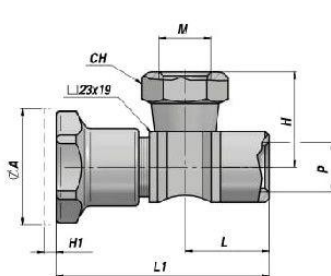
EM90

NEW!

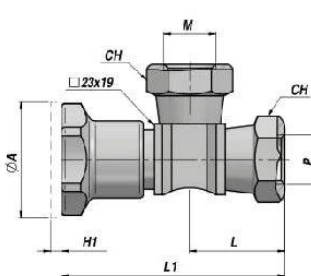
ROBINET D'EXCLUSION MANOMETRE - TYPE 90°
GAUGE ISOLATOR - 90° TYPE



A



B





C

Code Code	P	M BSP	Q MAX l/min	P MAX bar	Type Type	L1	L	H	H1	ØA	CH	kg
DFPEA1G040	1/4" BSPT	1/4"	5	350	EM90 01-A	60	24	38	4	30	19	0,13
DFPEA1G041	1/4" BSP	1/4"	5	350	EM90 01-B	58	22	38	4	30	19	0,13
DFPEA1G042	1/4" BSP	1/4"	5	350	EM90 01-C	62	26	38	4	30	19	0,14

SUR DEMANDE : ECROU TRAVERSEE DE CLOISON - ON REQUEST : PANEL MOUNTING NUT

MATERIEL CORPS : ACIER
BODY MATERIAL : STEEL

MONTAGE EN LIGNE
LINE MOUNTING

SCHEDA - CARD	PRODOTTO - PRODUCT	SCHEMA - SCHEMA	EMIL
P10/0			ESCLUSORE PER MANOMETRO IN LINEA <i>GAUGE ISOLATOR LINE TYPE</i>

APPLICAZIONE

Sono utilizzati negli impianti oleodinamici per escludere o collegare il manometro alla linea di pressione.

MONTAGGIO

Collegare il manometro alla bocca M e la linea di pressione alla bocca P. Per manometro con filetto 1/4 conico richiedere l'apposito anello in ottone.

FUNZIONAMENTO

Con volantino completamente avvitato il manometro è isolato dalla linea di pressione. Svitando il volantino il manometro rileva la pressione nella linea collegata.

A RICHIESTA

Filettature metriche - Filettature SAE - DIN2353 - Tenute in viton.

NOTE COSTRUTTIVE

Elevata riduzione del colpo di pressione - Pomello in plastica antiolio - Corpo zincato - Nessun trafilamento.

APPLICATION

They are used in hydraulic systems to shut off or connect the gauge to the pressure line.

INSTALLATION

Connect the gauge to port M and the pressure line to port P. For 1/4" male conic threaded gauges please request the suitable brass ring.

OPERATION

When hand-knob is tightened, the gauge is isolated from the pressure line.

By loosening the hand-knob the gauge is connected to the pressure line.

OPTIONAL

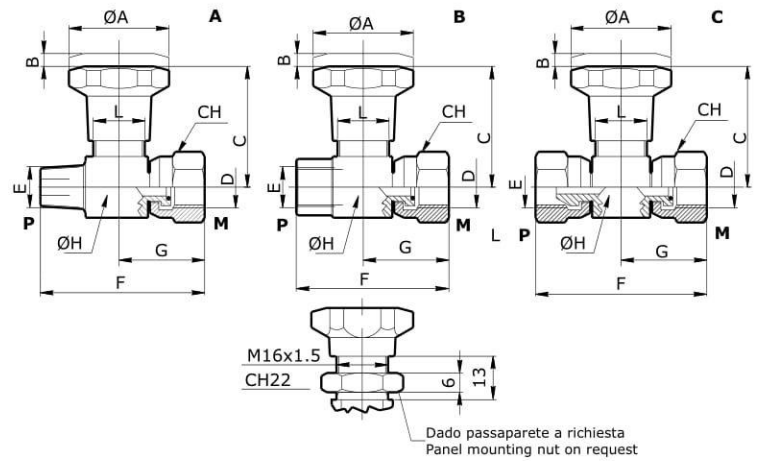
Metric threads - SAE threads - DIN2353 - Viton seals.

FEATURES

High reduction of shock pressure - Oil-resistant plastic hand-knob - Zinc plated body - No leakage.

CARATTERISTICHE - HYDRAULIC FEATURES

Dimensione <i>Dimension</i>	01
Pressione max <i>Max Pressure (bar)</i>	350
Portata max <i>Max Flow Rate (l/min)</i>	5



DIMENSIONI E PESI - EXTERNAL DIMENSIONS AND WEIGHTS

Dimensione <i>Dimension</i>	A	B	C	CH	D	E	F	G	H	L	Peso - Weight (kg)
A	30	4	38	19	1/4	1/4 BSPT (conico - conic)	50	27	19	M16x1.5	0.125
B	30	4	38	19	1/4	1/4	48	27	19	M16x1.5	0.140
C	30	4	38	19	1/4	1/4	50	27	19	M16x1.5	0.145



CODICE ORDINAZIONE - ORDERING CODE

EMIL 01

Tipo - Type		Accessorio - Components	
A	M + F	D	No Dado Passaparte <i>Without panel mounting nut</i>
B	F + F		Dado Passaparte <i>Panel mounting nut</i>
C	FG + F		

ESEMPIO ORDINAZIONE - ORDERING CODE EXAMPLE

EMIL 01 B	EMIL - Dimensione 01 - Tipo F+F / EMIL - 01 Dimension - F+F Type
------------------	--

SCHEDA - CARD	PRODOTTO - PRODUCT	SCHEMA - SCHEMA	EM90
P15/0			ESCLUSORE PER MANOMETRO A 90° GAUGE ISOLATOR 90° TYPE

APPLICAZIONE

Sono utilizzati negli impianti oleodinamici per escludere o collegare il manometro alla linea di pressione.

MONTAGGIO

Collegare il manometro alla bocca M e la linea di pressione alla bocca P. Per manometro con filetto 1/4 conico richiedere l'apposito anello in ottone.

FUNZIONAMENTO

Con volantino completamente avvitato il manometro è isolato dalla linea di pressione. Svitando il volantino il manometro rileva la pressione nella linea collegata.

A RICHIESTA

Filettature metriche - Filettature SAE - DIN2353 - Tenute in viton.

NOTE COSTRUTTIVE

Elevata riduzione del colpo di pressione - Pomello in plastica antioleo - Corpo zincato - Nessun trafilamento.

APPLICATION

They are used in hydraulic systems to shut off or connect the gauge to the pressure line.

INSTALLATION

Connect the gauge to port M and the pressure line to port P. For 1/4" male conic threaded gauges please request the suitable brass ring.

OPERATION

When hand-knob is tightened, the gauge is isolated from the pressure line.

By loosening the hand-knob the gauge is connected to the pressure line.

OPTIONAL

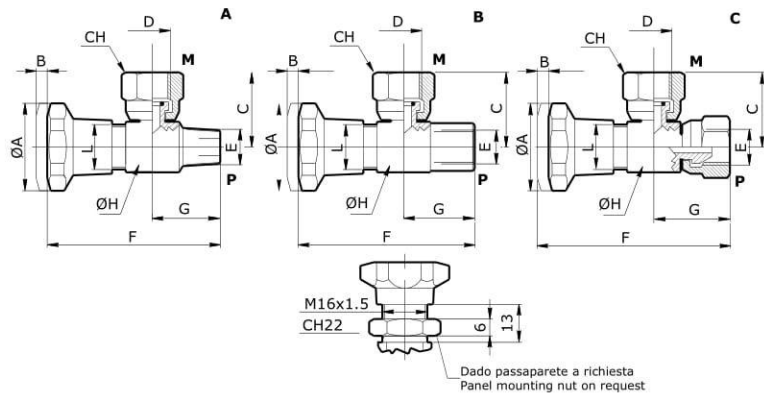
Metric threads - SAE threads - DIN2353 - Viton seals.

FEATURES

High reduction of shock pressure - Oil-resistant plastic hand-knob - Zinc plated body - No leakage.

CARATTERISTICHE - HYDRAULIC FEATURES

Dimensione <i>Dimension</i>	01
Pressione max <i>Max Pressure (bar)</i>	350
Portata max <i>Max Flow Rate (l/min)</i>	5



DIMENSIONI E PESI - EXTERNAL DIMENSIONS AND WEIGHTS

Dimensione <i>Dimension</i>	A	B	C	CH	D	E	F	G	H	L	Peso <i>Weight (kg)</i>
A	30	4	38	19	1/4	1/4 BSPT (conico - conic)	60	24	19	M16x1.5	0.123
B	30	4	38	19	1/4	1/4	58	22	19	M16x1.5	0.123
C	30	4	38	19	1/4	1/4	62	26	19	M16x1.5	0.140

CODICE ORDINAZIONE - ORDERING CODE

EM90 01			
Tipo - Type		Accessorio - Components	
A	M + F	No Dado Passaparete <i>Without panel mounting nut</i>	
B	F + F	Dado Passaparete <i>Panel mounting nut</i>	
C	FG + F		

ESEMPIO ORDINAZIONE - ORDERING CODE EXAMPLE

EM90 01 B	EM90 - Dimensione 01 - Tipo F+F / EM90 - 01 Dimension - F+F Type
------------------	--