

FLASQUE AVANT ø32 "BH" allemande

FLASQUE AVANT ø32 "BH" allemande	
Rotation à gauche	Rotation à droite

Arbre	
CF001 - Queue fraisée T.2 = 13.8 [Nm] 	SCF01 - Cannelé T.2 = 42.8 [Nm] m=0,75 Z=15
R	Q

SCF03 - Cannelé T.2 = 42.8 [Nm] m=0,75 Z=15 	R
--	----------

Couvercle	
Rotation à gauche	Rotation à droite

Cylindrée	
TYPE	CODE
XV-1U/0.9	16
XV-1U/1.2	17
XV-1U/1.7	18
XV-1U/2.2	20
XV-1U/2.6	21
XV-1U/3.2	23
XV-1U/3.8	25
XV-1U/4.3	27
XV-1U/4.9	29
XV-1U/5.9	31
XV-1U/6.5	32
XV-1U/7.8	34
XV-1U/9.8	36

Corps standard																																																					
Cylindrée	cm³/tour	Filetages standard																																																			
		0.9	1.2	1.7	2.2	2.6	3.2	3.8	4.3	4.9	5.9	6.5	7.8	9.8																																							
I - I	B - B	J - J	B - Z	Z - Z	G - F	I - I	B - B	J - J	B - Z	Z - Z	G - F	I - I	B - B	J - J	B - Z	Z - Z	G - F	I - I	B - B	J - J	B - Z	Z - Z	G - F	I - I	B - B	J - J	B - Z	Z - Z	G - F	I - I	B - B	J - J	B - Z	Z - Z	G - F	I - I	B - B	J - J	B - Z	Z - Z	G - F	I - I	B - B	J - J	B - Z	Z - Z	G - F	I - I	B - B	J - J	B - Z	Z - Z	G - F

Tableau des combinaisons des bridages et filetages standard disponibles en magasin

Corps (filetages et bridages)						
			Corps Renfermé			

moteur unidirectionnel - série XV

XV-1U

MOTEUR TYPE "SAE AA"
FLASQUE AVANT Ø50,8 · ARBRE CYLINDRIQUE

X	1	U	25	62	B	B	B	A
Série	X	série XV						
Groupe	1	groupe 1						
Catégorie	U	moteur unidirectionnel						
Cylindrée	25	3.8						
Flasque avant	62	Ø50.8 SAE AA rotation à droite						
Arbre	B	CI002 - Cylindrique ø12.7 - clavette épaisseur 3.2 (SAE AA)						
Corps	IN	B aspiration - 3/8" GAS						
	OUT	B refoulement - 3/8" GAS						
Couvercle	A	standard						



XU168

Tableau des données techniques

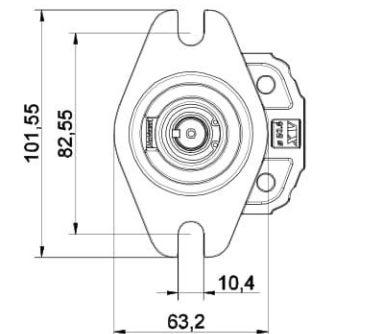
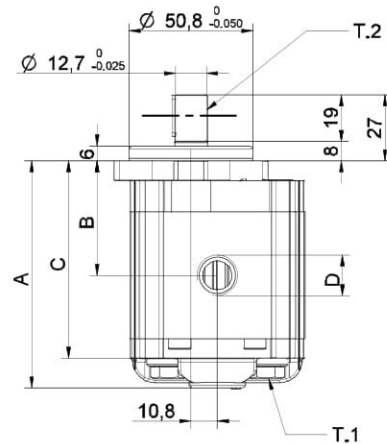
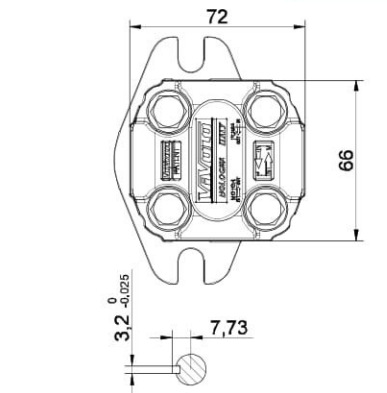
TYPE	Cylindrée cm ³ /tour	Pression Max.		CODE	
		P1 bar	P3 bar	Rotation à gauche	Rotation à droite
XV-1U/0.9	0,91	240	280	X 1 U 16 61 B B B A	X 1 U 16 62 B B B A
XV-1U/1.2	1,17	250	290	X 1 U 17 61 B B B A	X 1 U 17 62 B B B A
XV-1U/1.7	1,56	250	290	X 1 U 18 61 B B B A	X 1 U 18 62 B B B A
XV-1U/2.2	2,08	250	290	X 1 U 20 61 B B B A	X 1 U 20 62 B B B A
XV-1U/2.6	2,60	250	300	X 1 U 21 61 B B B A	X 1 U 21 62 B B B A
XV-1U/3.2	3,12	250	300	X 1 U 23 61 B B B A	X 1 U 23 62 B B B A
XV-1U/3.8	3,64	250	300	X 1 U 25 61 B B B A	X 1 U 25 62 B B B A
XV-1U/4.3	4,16	250	300	X 1 U 27 61 B B B A	X 1 U 27 62 B B B A
XV-1U/4.9	4,94	250	300	X 1 U 29 61 B B B A	X 1 U 29 62 B B B A
XV-1U/5.9	5,85	250	300	X 1 U 31 61 B B B A	X 1 U 31 62 B B B A
XV-1U/6.5	6,50	250	300	X 1 U 32 61 B B B A	X 1 U 32 62 B B B A
XV-1U/7.8	7,54	220	260	X 1 U 34 61 B B B A	X 1 U 34 62 B B B A
XV-1U/9.8	9,88	190	230	X 1 U 36 61 B B B A	X 1 U 36 62 B B B A

P1) Pression max de service - P3) Pression max de pointe

Pour applications lourdes il est conseillé de vérifier le couple admissible de l'arbre

Tableau des dimensions

TYPE	Poids	A	B	C	D	D
	kg	mm	mm	mm	IN	OUT
XV-1U/0.9	1,000	82,6	41,8	70,6	3/8" BSPP	3/8" BSPP
XV-1U/1.2	1,020	83,5	42,3	71,5	3/8" BSPP	3/8" BSPP
XV-1U/1.7	1,060	85,0	43,0	73,0	3/8" BSPP	3/8" BSPP
XV-1U/2.2	1,080	87,0	44,0	75,0	3/8" BSPP	3/8" BSPP
XV-1U/2.6	1,110	89,0	45,0	77,0	3/8" BSPP	3/8" BSPP
XV-1U/3.2	1,140	91,0	46,0	79,0	3/8" BSPP	3/8" BSPP
XV-1U/3.8	1,170	93,0	47,0	81,0	3/8" BSPP	3/8" BSPP
XV-1U/4.3	1,220	95,0	48,0	83,0	3/8" BSPP	3/8" BSPP
XV-1U/4.9	1,250	98,0	49,5	86,0	3/8" BSPP	3/8" BSPP
XV-1U/5.9	1,310	101,5	51,3	89,5	3/8" BSPP	3/8" BSPP
XV-1U/6.5	1,350	105,0	52,5	93,0	3/8" BSPP	3/8" BSPP
XV-1U/7.8	1,410	108,0	54,5	96,0	3/8" BSPP	3/8" BSPP
XV-1U/9.8	1,550	117,0	59,0	105,0	3/8" BSPP	3/8" BSPP



26/08/04 XP25c288Ba.dff

T.1 = 24.5÷29.4 [Nm] - couple de serrage vis M8

T.2 = 32.8 [Nm] - couple admissible de l'arbre (N.B. Pour le choix de l'arbre, vérifier toujours le couple admissible).

Planche des variantes



FLASQUE AVANT $\phi 50,8$ "SAE AA"

FLASQUE AVANT $\phi 50,8$ "SAE AA"	
Rotation à gauche	Rotation à droite
61	62

Arbre	
Rotation à gauche	Rotation à droite
CI001 - Cylindrique T.2 = 25.8 [Nm] 	CI002 - Cylindrique T.2 = 32.8 [Nm] SAE
CF003 - Queue fraisée T.2 = 25.9 [Nm] SAE 	CO002 - Conique T.2 = 119.8 [Nm]
	SCF05 - Cannelé T.2 = 32.2 [Nm] SAE J 498 9T 20/40 DP
CO002+HK - Conique T.2 = 119.8 [Nm] HK 14-12 	CI001+HK - Cylindrique T.2 = 25.8 [Nm] HK 14-12

Couvercle	
Rotation à gauche	Rotation à droite

Cylindrée	
TYPE	CODE
XV-1U/0.9	16
XV-1U/1.2	17
XV-1U/1.7	18
XV-1U/2.2	20
XV-1U/2.6	21
XV-1U/3.2	23
XV-1U/3.8	25
XV-1U/4.3	27
XV-1U/4.9	29
XV-1U/5.9	31
XV-1U/6.5	32
XV-1U/7.8	34
XV-1U/9.8	36

Cylindrée	cm ³ /tour	Corps standard						
		Filetages standard						
0.9		I - I	B - B	J - J	B - Z	Z - Z	G - F	
1.2		I - I	B - B	J - J	B - Z	Z - Z	G - F	
1.7		I - I	B - B	J - J	B - Z	Z - Z	G - F	
2.2		I - I	B - B	J - J	B - Z	Z - Z	G - F	
2.6		I - I	B - B	J - J	B - Z	Z - Z	G - F	
3.2		I - I	B - B	J - J	B - Z	Z - Z	G - F	
3.8		I - I	B - B	J - J	B - Z	Z - Z	G - F	
4.3		I - I	B - B	J - J	B - Z	Z - Z	G - F	
4.9		I - I	B - B	J - J	B - Z	Z - Z	G - F	
5.9		I - I	B - B	J - J	B - Z	Z - Z	G - F	
6.5		I - I	B - B	J - J	B - Z	Z - Z	G - F	
7.8		I - I	B - B	J - J	B - Z	Z - Z	G - F	
9.8		I - I	B - B	J - J	B - Z	Z - Z	G - F	

Tableau des combinaisons des bridages et filetages standard disponibles en magasin

Corps (filetages et bridages)													
	A		B		C		D		E		F		G
	H		I		J	Corps Renfermé	Z						