

FLASQUE AVANT ø50.8

| FLASQUE AVANT ø50.8 | | | | Arbre | | | | Couvercle | | | |
|---------------------|----|-------------------|----|--|--|--|--|-------------------|--|-------------------|---|
| Rotation à gauche | | Rotation à droite | | | | | | Rotation à gauche | | Rotation à droite | |
| | 01 | | 02 | CO001 - Conique T.2 = 482 [Nm] | | | | A | | | A |
| | | | | CI004 - Cylindrique T.2 = 180 [Nm] | | | | B | | | A |
| | | | | | | | | C | | | B |
| | | | | SCF04 - Cannelé T.2 = 264 [Nm] | | | | I | | | C |
| | | | | | | | | H | | | D |
| | | | | | | | | | | B | B |
| | | | | | | | | | | C | C |
| | | | | | | | | | | D | D |

| Cylindrée | |
|-----------|------|
| TYPE | CODE |
| XV-3U/15 | 66 |
| XV-3U/18 | 68 |
| XV-3U/21 | 70 |
| XV-3U/27 | 72 |
| XV-3U/32 | 74 |
| XV-3U/38 | 78 |
| XV-3U/43 | 79 |
| XV-3U/47 | 80 |
| XV-3U/51 | 81 |
| XV-3U/54 | 82 |
| XV-3U/61 | 83 |
| XV-3U/64 | 85 |
| XV-3U/70 | 86 |
| XV-3U/74 | 87 |
| XV-3U/90 | 89 |

| Corps standard | | | | |
|----------------|----------|--------------------|-------|-------|
| Cylindrée | cm3/tour | Filetages standard | | |
| 15 | | A - A | D - D | H - H |
| 18 | | A - A | D - D | H - H |
| 21 | | A - A | D - D | H - H |
| 27 | | A - A | E - E | H - H |
| 32 | | B - B | E - E | H - H |
| 38 | | B - B | E - E | H - H |
| 43 | | B - B | E - E | H - H |
| 47 | | B - B | E - E | H - H |
| 51 | | B - B | E - E | H - H |
| 54 | | B - B | E - E | H - H |
| 61 | | C - C | F - F | |
| 64 | | C - C | F - F | |
| 70 | | C - C | F - F | |
| 74 | | C - C | F - F | |
| 90 | | C - C | F - F | |

Tableau des combinaisons des bridages et filetages standard disponibles en magasin

| Corps (filetages et bridages) | | | | | | | | | | | | | |
|-------------------------------|---|--|---|--|---|--|---|--|---|--|---|--|---|
| | A | | B | | C | | D | | E | | F | | G |
| | H | | I | | J | | K | | L | | M | | N |
| Corps Renfermé | Z | | | | | | | | | | | | |

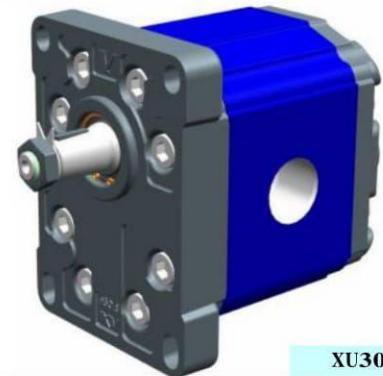
moteur unidirectionnel - série XV

XV-3U

MOTEUR STANDARD EUROPEENNE
FLASQUE AVANT ø50.8 - ARBRE CONIQUE

X 3 U 78 02 A E E A

| | | |
|---------------|-----|--|
| Série | X | série XV |
| Groupe | 3 | groupe 3 |
| Catégorie | U | moteur unidirectionnel |
| Cylindrée | 78 | 38 |
| Flasque avant | 02 | Ø50.8 rotation à droite |
| Arbre | A | CC001 - Conique 1:8 - ø22 - clavette épaisseur 4 |
| Corps | IN | E aspiration - 1" BSP |
| | OUT | E refoulement - 1" BSP |
| Couvercle | A | standard |



XU302

Tableau des données techniques

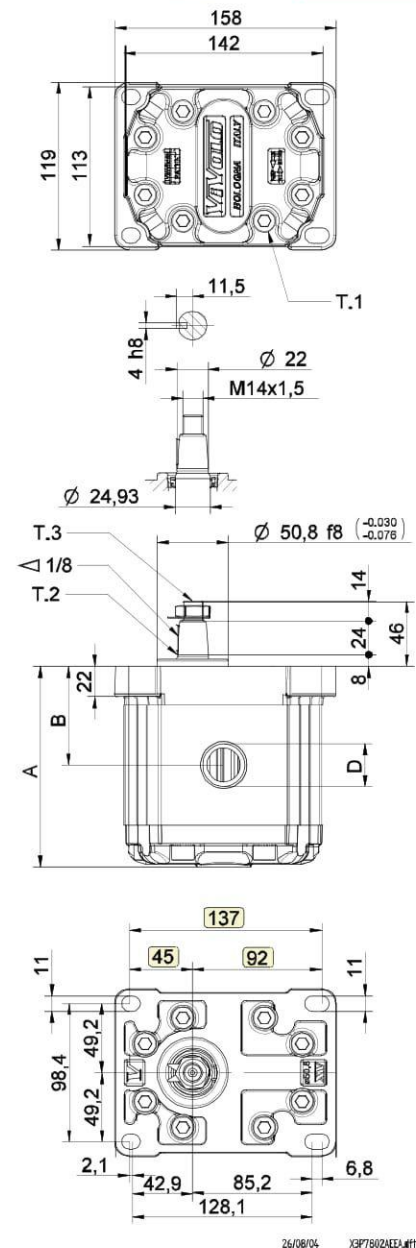
| TYPE | Cylindrée cm ³ /tour | Pression Max. | | CODE | |
|----------|------------------------------------|---------------|--------|---------------------|---------------------|
| | | P1 bar | P3 bar | Rotation à gauche | Rotation à droite |
| XV-3U/15 | 14,89 | 300 | 320 | X 3 U 66 01 A D D A | X 3 U 66 02 A D D A |
| XV-3U/18 | 17,37 | 300 | 320 | X 3 U 68 01 A D D A | X 3 U 68 02 A D D A |
| XV-3U/21 | 21,10 | 280 | 300 | X 3 U 70 01 A D D A | X 3 U 70 02 A D D A |
| XV-3U/27 | 26,97 | 250 | 270 | X 3 U 72 01 A E E A | X 3 U 72 02 A E E A |
| XV-3U/32 | 32,27 | 250 | 270 | X 3 U 74 01 A E E A | X 3 U 74 02 A E E A |
| XV-3U/38 | 38,47 | 250 | 270 | X 3 U 78 01 A E E A | X 3 U 78 02 A E E A |
| XV-3U/43 | 43,44 | 250 | 270 | X 3 U 79 01 A E E A | X 3 U 79 02 A E E A |
| XV-3U/47 | 47,16 | 230 | 250 | X 3 U 80 01 A E E A | X 3 U 80 02 A E E A |
| XV-3U/51 | 50,88 | 230 | 250 | X 3 U 81 01 A E E A | X 3 U 81 02 A E E A |
| XV-3U/54 | 54,60 | 230 | 250 | X 3 U 82 01 A E E A | X 3 U 82 02 A E E A |
| XV-3U/61 | 60,81 | 230 | 250 | X 3 U 83 01 A F F A | X 3 U 83 02 A F F A |
| XV-3U/64 | 64,53 | 210 | 230 | X 3 U 85 01 A F F A | X 3 U 85 02 A F F A |
| XV-3U/70 | 70,74 | 200 | 220 | X 3 U 86 01 A F F A | X 3 U 86 02 A F F A |
| XV-3U/74 | 74,46 | 180 | 200 | X 3 U 87 01 A F F A | X 3 U 87 02 A F F A |
| XV-3U/90 | 86,87 | 150 | 170 | X 3 U 89 01 A F F A | X 3 U 89 02 A F F A |

P1) Pression max de service - P3) Pression max de pointe

Pour applications lourdes il est conseillé de vérifier le couple admissible de l'arbre

Tableau des dimensions

| TYPE | Poids | A | B | D | D |
|----------|-------|-------|------|-------------|-------------|
| | kg | mm | mm | IN | OUT |
| XV-3U/15 | 7,010 | 124,0 | 61,0 | 3/4" BSPP | 3/4" BSPP |
| XV-3U/18 | 7,070 | 126,0 | 62,0 | 3/4" BSPP | 3/4" BSPP |
| XV-3U/21 | 7,150 | 129,0 | 63,5 | 3/4" BSPP | 3/4" BSPP |
| XV-3U/27 | 7,250 | 133,0 | 65,5 | 1" BSPP | 1" BSPP |
| XV-3U/32 | 7,390 | 138,0 | 68,0 | 1" BSPP | 1" BSPP |
| XV-3U/38 | 7,520 | 143,0 | 70,5 | 1" BSPP | 1" BSPP |
| XV-3U/43 | 7,630 | 147,0 | 72,5 | 1" BSPP | 1" BSPP |
| XV-3U/47 | 7,710 | 150,0 | 74,0 | 1" BSPP | 1" BSPP |
| XV-3U/51 | 7,790 | 153,0 | 75,5 | 1" BSPP | 1" BSPP |
| XV-3U/54 | 7,870 | 156,0 | 77,0 | 1" BSPP | 1" BSPP |
| XV-3U/61 | 8,010 | 161,0 | 79,5 | 1" 1/4 BSPP | 1" 1/4 BSPP |
| XV-3U/64 | 8,090 | 164,0 | 81,0 | 1" 1/4 BSPP | 1" 1/4 BSPP |
| XV-3U/70 | 8,220 | 169,0 | 83,5 | 1" 1/4 BSPP | 1" 1/4 BSPP |
| XV-3U/74 | 8,300 | 172,0 | 85,0 | 1" 1/4 BSPP | 1" 1/4 BSPP |
| XV-3U/90 | 8,570 | 182,0 | 90,0 | 1" 1/4 BSPP | 1" 1/4 BSPP |



T.1 = 60÷65 [Nm] - couple de serrage vis M10

T.3 = 75 [Nm] - couple de serrage - clé 22

T.2 = 482 [Nm] - couple admissible de l'arbre (N.B. Pour le choix de l'arbre, vérifier toujours le couple admissible).

FLASQUE AVANT ø50.8

| FLASQUE AVANT ø50.8 | | | | Arbre | | | | Couvercle | | | | | |
|---------------------|-----------|-------------------|-----------|--|--|--|--|-------------------|--|-------------------|--|--|----------|
| Rotation à gauche | | Rotation à droite | | | | | | Rotation à gauche | | Rotation à droite | | | |
| | 01 | | 02 | CO001 - Conique T.2 = 482 [Nm] | | | | A | | | | | A |
| | | | | CI004 - Cylindrique T.2 = 180 [Nm] | | | | B | | | | | B |
| | | | | SCF04 - Cannelé T.2 = 264 [Nm] | | | | C | | | | | C |
| | | | | | | | | H | | | | | D |
| | | | | | | | | I | | | | | C |

| Cylindrée | |
|-----------|------|
| TYPE | CODE |
| XV-3U/15 | 66 |
| XV-3U/18 | 68 |
| XV-3U/21 | 70 |
| XV-3U/27 | 72 |
| XV-3U/32 | 74 |
| XV-3U/38 | 78 |
| XV-3U/43 | 79 |
| XV-3U/47 | 80 |
| XV-3U/51 | 81 |
| XV-3U/54 | 82 |
| XV-3U/61 | 83 |
| XV-3U/64 | 85 |
| XV-3U/70 | 86 |
| XV-3U/74 | 87 |
| XV-3U/90 | 89 |

| Corps standard | | | | |
|----------------|----------|--------------------|-------|-------|
| Cylindrée | cm3/tour | Filetages standard | | |
| 15 | | A - A | D - D | H - H |
| 18 | | A - A | D - D | H - H |
| 21 | | A - A | D - D | H - H |
| 27 | | A - A | E - E | H - H |
| 32 | | B - B | E - E | H - H |
| 38 | | B - B | E - E | H - H |
| 43 | | B - B | E - E | H - H |
| 47 | | B - B | E - E | H - H |
| 51 | | B - B | E - E | H - H |
| 54 | | B - B | E - E | H - H |
| 61 | | C - C | F - F | |
| 64 | | C - C | F - F | |
| 70 | | C - C | F - F | |
| 74 | | C - C | F - F | |
| 90 | | C - C | F - F | |

Tableau des combinaisons des bridages et filetages standard disponibles en magasin

| Corps (filetages et bridages) | | | | | | | | | | | | | |
|-------------------------------|----------|----------|----------|--|----------|--|----------|--|----------|--|----------|--|----------|
| | A | | B | | C | | D | | E | | F | | G |
| | H | | I | | J | | K | | L | | M | | N |
| Corps Renfermé | | Z | | | | | | | | | | | |

moteur unidirectionnel - série XV

XV-3U

MOTEUR TYPE ""SAE B""

FLASQUE AVANT Ø101,6 - ARBRE CANNELÉ

X 3 U 78 32 I E E A

| | | |
|---------------|-----|---|
| Série | X | série XV |
| Groupe | 3 | groupe 3 |
| Catégorie | U | moteur unidirectionnel |
| Cylindrée | 78 | 38 |
| Flasque avant | 32 | Ø101.6 SAE B rotation à droite |
| Arbre | I | SCF04 - Cannelé ø21.81 z=13, H=33.55 SAE J498-13T-16/32DP (SAE B) |
| Corps | IN | E aspiration - 1" BSP |
| | OUT | E refoulement - 1" BSP |
| Couvercle | A | standard |



XU331

Tableau des données techniques

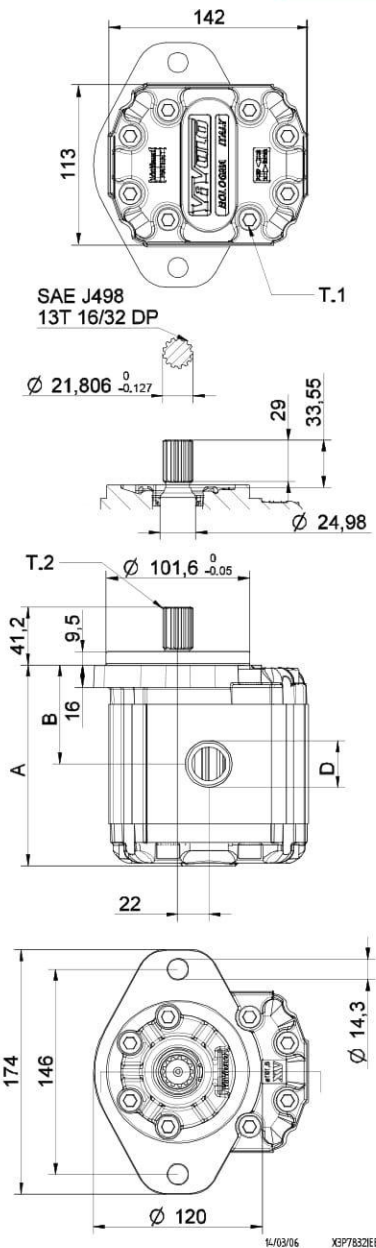
| TYPE | Cylindrée cm ³ /tour | Pression Max. | | CODE | |
|----------|------------------------------------|---------------|--------|---------------------|---------------------|
| | | P1 bar | P3 bar | Rotation à gauche | Rotation à droite |
| XV-3U/15 | 14,89 | 250 | 270 | X 3 U 66 31 I D D A | X 3 U 66 32 I D D A |
| XV-3U/18 | 17,37 | 250 | 270 | X 3 U 68 31 I D D A | X 3 U 68 32 I D D A |
| XV-3U/21 | 21,10 | 250 | 270 | X 3 U 70 31 I D D A | X 3 U 70 32 I D D A |
| XV-3U/27 | 26,97 | 250 | 270 | X 3 U 72 31 I E E A | X 3 U 72 32 I E E A |
| XV-3U/32 | 32,27 | 250 | 270 | X 3 U 74 31 I E E A | X 3 U 74 32 I E E A |
| XV-3U/38 | 38,47 | 250 | 270 | X 3 U 78 31 I E E A | X 3 U 78 32 I E E A |
| XV-3U/43 | 43,44 | 250 | 270 | X 3 U 79 31 I E E A | X 3 U 79 32 I E E A |
| XV-3U/47 | 47,16 | 230 | 250 | X 3 U 80 31 I E E A | X 3 U 80 32 I E E A |
| XV-3U/51 | 50,88 | 230 | 250 | X 3 U 81 31 I E E A | X 3 U 81 32 I E E A |
| XV-3U/54 | 54,60 | 230 | 250 | X 3 U 82 31 I E E A | X 3 U 82 32 I E E A |
| XV-3U/61 | 60,81 | 230 | 250 | X 3 U 83 31 I F F A | X 3 U 83 32 I F F A |
| XV-3U/64 | 64,53 | 210 | 230 | X 3 U 85 31 I F F A | X 3 U 85 32 I F F A |
| XV-3U/70 | 70,74 | 200 | 220 | X 3 U 86 31 I F F A | X 3 U 86 32 I F F A |
| XV-3U/74 | 74,46 | 180 | 200 | X 3 U 87 31 I F F A | X 3 U 87 32 I F F A |
| XV-3U/90 | 86,87 | 150 | 170 | X 3 U 89 31 I F F A | X 3 U 89 32 I F F A |

P1) Pression max de service - P3) Pression max de pointe

Pour applications lourdes il est conseillé de vérifier le couple admissible de l'arbre

Tableau des dimensions

| TYPE | Poids | A | B | D | D |
|----------|-------|-------|------|-------------|-------------|
| | kg | mm | mm | IN | OUT |
| XV-3U/15 | 7,010 | 124,0 | 61,0 | 3/4" BSPP | 3/4" BSPP |
| XV-3U/18 | 7,070 | 126,0 | 62,0 | 3/4" BSPP | 3/4" BSPP |
| XV-3U/21 | 7,150 | 129,0 | 63,5 | 3/4" BSPP | 3/4" BSPP |
| XV-3U/27 | 7,250 | 133,0 | 65,5 | 1" BSPP | 1" BSPP |
| XV-3U/32 | 7,390 | 138,0 | 68,0 | 1" BSPP | 1" BSPP |
| XV-3U/38 | 7,520 | 143,0 | 70,5 | 1" BSPP | 1" BSPP |
| XV-3U/43 | 7,630 | 147,0 | 72,5 | 1" BSPP | 1" BSPP |
| XV-3U/47 | 7,710 | 150,0 | 74,0 | 1" BSPP | 1" BSPP |
| XV-3U/51 | 7,790 | 153,0 | 75,5 | 1" BSPP | 1" BSPP |
| XV-3U/54 | 7,870 | 156,0 | 77,0 | 1" BSPP | 1" BSPP |
| XV-3U/61 | 8,010 | 161,0 | 79,5 | 1" 1/4 BSPP | 1" 1/4 BSPP |
| XV-3U/64 | 8,090 | 164,0 | 81,0 | 1" 1/4 BSPP | 1" 1/4 BSPP |
| XV-3U/70 | 8,220 | 169,0 | 83,5 | 1" 1/4 BSPP | 1" 1/4 BSPP |
| XV-3U/74 | 8,300 | 172,0 | 85,0 | 1" 1/4 BSPP | 1" 1/4 BSPP |
| XV-3U/90 | 8,570 | 182,0 | 90,0 | 1" 1/4 BSPP | 1" 1/4 BSPP |



T.1 = 60÷65 [Nm] - couple de serrage vis M10

T.2 = 264 [Nm] - couple admissible de l'arbre (N.B. Pour le choix de l'arbre, vérifier toujours le couple admissible).

Planche des variantes



FLASQUE AVANT $\phi 101,6$ ""SAE B""

| FLASQUE AVANT $\phi 101,6$ ""SAE B"" | | Arbre | | Couvercle | |
|--------------------------------------|-------------------|---|---|-------------------|-------------------|
| Rotation à gauche | Rotation à droite | | | Rotation à gauche | Rotation à droite |
| | | CO001 - Conique $T.2 = 482$ [Nm] | | | |
| 31 | 32 | A | B | A | A |
| | | CI004 - Cylindrique $T.2 = 180$ [Nm] | | | |
| | | C | H | B | B |
| | | SCF04 - Cannelé $T.2 = 2\epsilon 4$ [Nm] | | | |
| | | I | | C | C |
| | | | | | |
| | | | | D | D |

| Cylindrée | |
|-----------|------|
| TYPE | CODE |
| XV-3U/15 | 66 |
| XV-3U/18 | 68 |
| XV-3U/21 | 70 |
| XV-3U/27 | 72 |
| XV-3U/32 | 74 |
| XV-3U/38 | 78 |
| XV-3U/43 | 79 |
| XV-3U/47 | 80 |
| XV-3U/51 | 81 |
| XV-3U/54 | 82 |
| XV-3U/61 | 83 |
| XV-3U/64 | 85 |
| XV-3U/70 | 86 |
| XV-3U/74 | 87 |
| XV-3U/90 | 89 |

| Corps standard | | | | |
|----------------|----------|--------------------|-------|-------|
| Cylindrée | cm3/tour | Filetages standard | | |
| 15 | | A - A | D - D | H - H |
| 18 | | A - A | D - D | H - H |
| 21 | | A - A | D - D | H - H |
| 27 | | A - A | E - E | H - H |
| 32 | | B - B | E - E | H - H |
| 38 | | B - B | E - E | H - H |
| 43 | | B - B | E - E | H - H |
| 47 | | B - B | E - E | H - H |
| 51 | | B - B | E - E | H - H |
| 54 | | B - B | E - E | H - H |
| 61 | | C - C | F - F | |
| 64 | | C - C | F - F | |
| 70 | | C - C | F - F | |
| 74 | | C - C | F - F | |
| 90 | | C - C | F - F | |

Tableau des combinaisons des bridages et filetages standard disponibles en magasin

| Corps (filetages et bridages) | | | | | | | | | | | | | |
|-------------------------------|---|--|---|--|---|--|---|--|---|--|---|--|---|
| | A | | B | | C | | D | | E | | F | | G |
| | H | | I | | J | | L | | M | | N | | O |
| Corps Renfermé | Z | | | | | | | | | | | | |

moteur unidirectionnel - série XV

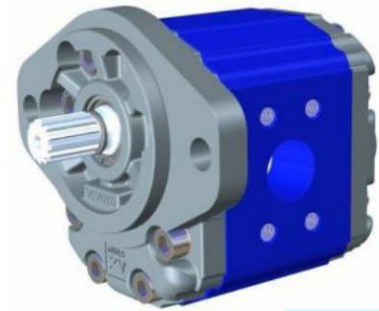
XV-3U

MOTEUR TYPE ""SAE B""

FLASQUE AVANT Ø101,6 - ARBRE CANNELÉ

X 3 U 78 32 I O O A

| | | |
|---------------|-----|--|
| Série | X | série XV |
| Groupe | 3 | groupe 3 |
| Catégorie | U | moteur unidirectionnel |
| Cylindrée | 78 | 38 |
| Flasque avant | 32 | Ø101.6 SAE B rotation à droite |
| Arbre | I | SCF04 - Cannelé ø21.81 z=13, H=33.55 SAE J498-13T -16/32DP (SAE B) |
| Corps | IN | aspiration - SAE 30,18 X 58,72 - ø32 - 7/16-14UNC-2B |
| | OUT | refoulement - SAE 30,18 X 58,72 - ø32 - 7/16-14UNC-2B |
| Couvercle | A | standard |



XU332

Tableau des données techniques

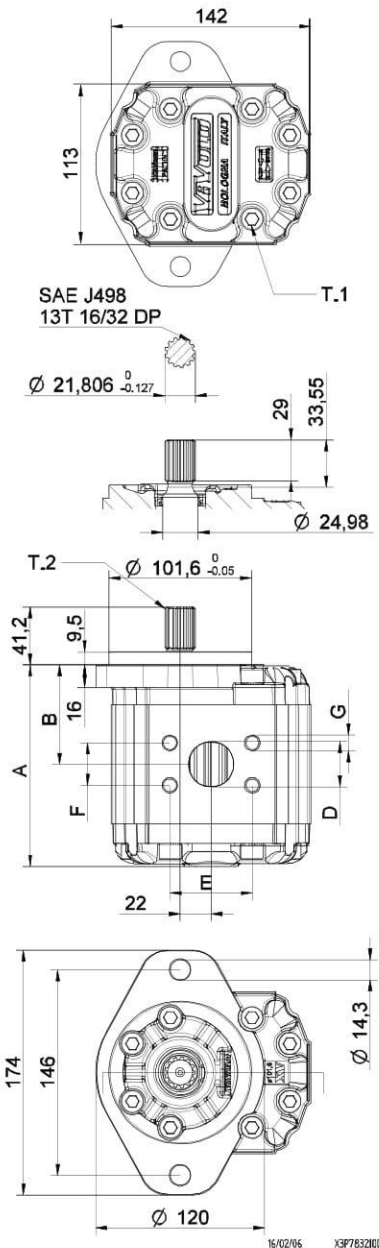
| TYPE | Cylindrée cm ³ /tour | Pression Max. | | CODE | |
|----------|------------------------------------|---------------|--------|---------------------|---------------------|
| | | P1 bar | P3 bar | Rotation à gauche | Rotation à droite |
| XV-3U/15 | 14,89 | 250 | 270 | X 3 U 66 31 I N N A | X 3 U 66 32 I N N A |
| XV-3U/18 | 17,37 | 250 | 270 | X 3 U 68 31 I N N A | X 3 U 68 32 I N N A |
| XV-3U/21 | 21,10 | 250 | 270 | X 3 U 70 31 I N N A | X 3 U 70 32 I N N A |
| XV-3U/27 | 26,97 | 250 | 270 | X 3 U 72 31 I N N A | X 3 U 72 32 I N N A |
| XV-3U/32 | 32,27 | 250 | 270 | X 3 U 74 31 I O O A | X 3 U 74 32 I O O A |
| XV-3U/38 | 38,47 | 250 | 270 | X 3 U 78 31 I O O A | X 3 U 78 32 I O O A |
| XV-3U/43 | 43,44 | 250 | 270 | X 3 U 79 31 I O O A | X 3 U 79 32 I O O A |
| XV-3U/47 | 47,16 | 230 | 250 | X 3 U 80 31 I O O A | X 3 U 80 32 I O O A |
| XV-3U/51 | 50,88 | 230 | 250 | X 3 U 81 31 I O O A | X 3 U 81 32 I O O A |
| XV-3U/54 | 54,60 | 230 | 250 | X 3 U 82 31 I O O A | X 3 U 82 32 I O O A |
| XV-3U/61 | 60,81 | 230 | 250 | X 3 U 83 31 I P P A | X 3 U 83 32 I P P A |
| XV-3U/64 | 64,53 | 210 | 230 | X 3 U 85 31 I P P A | X 3 U 85 32 I P P A |
| XV-3U/70 | 70,74 | 200 | 220 | X 3 U 86 31 I P P A | X 3 U 86 32 I P P A |
| XV-3U/74 | 74,46 | 180 | 200 | X 3 U 87 31 I P P A | X 3 U 87 32 I P P A |
| XV-3U/90 | 86,87 | 150 | 170 | X 3 U 89 31 I P P A | X 3 U 89 32 I P P A |

P1) Pression max de service - P3) Pression max de pointe

Pour applications lourdes il est conseillé de vérifier le couple admissible de l'arbre

Tableau des dimensions

| TYPE | Poids | A | B | D | E | F | G |
|----------|-------|-------|------|--------|-------|-------|---------------|
| | kg | mm | mm | IN-OUT | | | |
| XV-3U/15 | 7,010 | 124,0 | 61,0 | ø25 | 52,37 | 26,19 | 3/8-16UNC-2B |
| XV-3U/18 | 7,070 | 126,0 | 62,0 | ø25 | 52,37 | 26,19 | 3/8-16UNC-2B |
| XV-3U/21 | 7,150 | 129,0 | 63,5 | ø25 | 52,37 | 26,19 | 3/8-16UNC-2B |
| XV-3U/27 | 7,250 | 133,0 | 65,5 | ø25 | 52,37 | 26,19 | 3/8-16UNC-2B |
| XV-3U/32 | 7,390 | 138,0 | 68,0 | ø32 | 58,72 | 30,18 | 7/16-14UNC-2B |
| XV-3U/38 | 7,520 | 143,0 | 70,5 | ø32 | 58,72 | 30,18 | 7/16-14UNC-2B |
| XV-3U/43 | 7,630 | 147,0 | 72,5 | ø32 | 58,72 | 30,18 | 7/16-14UNC-2B |
| XV-3U/47 | 7,710 | 150,0 | 74,0 | ø32 | 58,72 | 30,18 | 7/16-14UNC-2B |
| XV-3U/51 | 7,790 | 153,0 | 75,5 | ø32 | 58,72 | 30,18 | 7/16-14UNC-2B |
| XV-3U/54 | 7,870 | 156,0 | 77,0 | ø32 | 58,72 | 30,18 | 7/16-14UNC-2B |
| XV-3U/61 | 8,010 | 161,0 | 79,5 | ø38 | 69,85 | 35,71 | 1/2-13UNC-2B |
| XV-3U/64 | 8,090 | 164,0 | 81,0 | ø38 | 69,85 | 35,71 | 1/2-13UNC-2B |
| XV-3U/70 | 8,220 | 169,0 | 83,5 | ø38 | 69,85 | 35,71 | 1/2-13UNC-2B |
| XV-3U/74 | 8,300 | 172,0 | 85,0 | ø38 | 69,85 | 35,71 | 1/2-13UNC-2B |
| XV-3U/90 | 8,570 | 182,0 | 90,0 | ø38 | 69,85 | 35,71 | 1/2-13UNC-2B |



T.1 = 60÷65 [Nm] - couple de serrage vis M10

T.2 = 264 [Nm] - couple admissible de l'arbre (N.B. Pour le choix de l'arbre, vérifier toujours le couple admissible).

Planche des variantes



FLASQUE AVANT $\phi 101,6$ ""SAE B""

| FLASQUE AVANT $\phi 101,6$ ""SAE B"" | | Arbre | | Couvercle | |
|--------------------------------------|-------------------|---|---|-------------------|-------------------|
| Rotation à gauche | Rotation à droite | | | Rotation à gauche | Rotation à droite |
| | | CO001 - Conique $T.2 = 482$ [Nm] | | | |
| 31 | 32 | A | B | A | A |
| | | CI004 - Cylindrique $T.2 = 180$ [Nm] | | | |
| | | C | H | B | B |
| | | SCF04 - Cannelé $T.2 = 2\epsilon 4$ [Nm] | | | |
| | | I | | C | C |
| | | | | | |
| | | | | D | D |

| Cylindrée | |
|-----------|------|
| TYPE | CODE |
| XV-3U/15 | 66 |
| XV-3U/18 | 68 |
| XV-3U/21 | 70 |
| XV-3U/27 | 72 |
| XV-3U/32 | 74 |
| XV-3U/38 | 78 |
| XV-3U/43 | 79 |
| XV-3U/47 | 80 |
| XV-3U/51 | 81 |
| XV-3U/54 | 82 |
| XV-3U/61 | 83 |
| XV-3U/64 | 85 |
| XV-3U/70 | 86 |
| XV-3U/74 | 87 |
| XV-3U/90 | 89 |

| Corps standard | | | | |
|----------------|----------|--------------------|-------|-------|
| Cylindrée | cm3/tour | Filetages standard | | |
| 15 | | A - A | D - D | H - H |
| 18 | | A - A | D - D | H - H |
| 21 | | A - A | D - D | H - H |
| 27 | | A - A | E - E | H - H |
| 32 | | B - B | E - E | H - H |
| 38 | | B - B | E - E | H - H |
| 43 | | B - B | E - E | H - H |
| 47 | | B - B | E - E | H - H |
| 51 | | B - B | E - E | H - H |
| 54 | | B - B | E - E | H - H |
| 61 | | C - C | F - F | |
| 64 | | C - C | F - F | |
| 70 | | C - C | F - F | |
| 74 | | C - C | F - F | |
| 90 | | C - C | F - F | |

Tableau des combinaisons des bridages et filetages standard disponibles en magasin

| Corps (filetages et bridages) | | | | | | | | | | | | | | |
|-------------------------------|---|--|---|--|---|--|---|--|---|--|---|--|---|---|
| | A | | B | | C | | D | | E | | F | | G | |
| | H | | I | | J | | L | | M | | N | | O | P |
| Corps Renfermé | Z | | | | | | | | | | | | | |