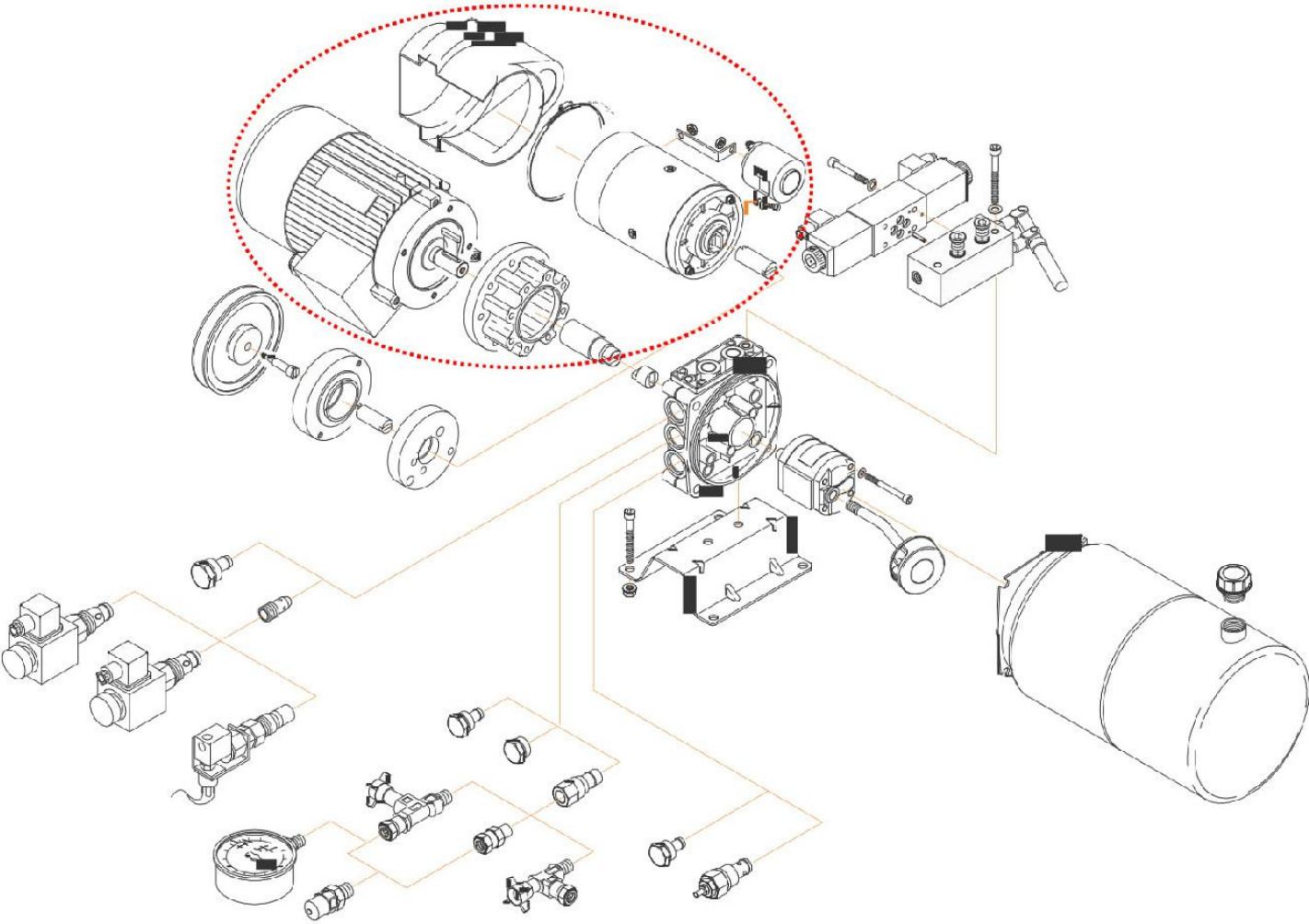


**MINICENTRALINA MULTIFUNZIONE** *MULTIFUNCTION POWER PACK*

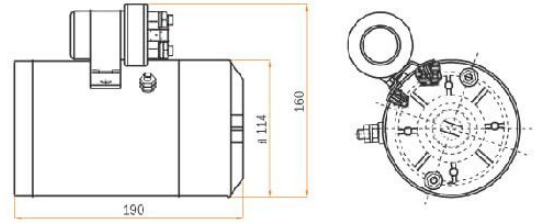


## MOTORI ELETTRICI *ELECTRIC MOTORS*

Codice <i>Code</i>	Descrizione <i>Description</i>	L (mm)	D (mm)
--------------------	--------------------------------	--------	--------

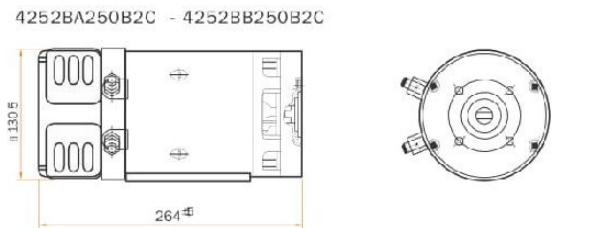
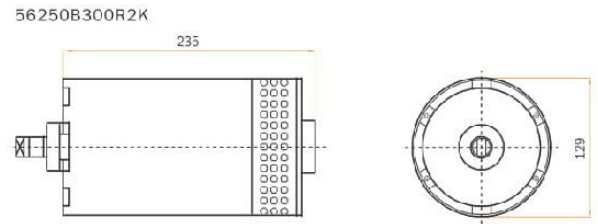
### Motori corrente continua con termocoppia e teleruttore *Direct current motors with thermocouple and start relay*

56250A180L0H	Motore <i>Motor</i> 12V 1800W*
56250B200L0H	Motore <i>Motor</i> 24V 2000W*
56250A160L2K	Motore <i>Motor</i> AMJ-5197 12V 1,6KW
56250B220L2K	Motore <i>Motor</i> AMJ-5196 24V 2,2KW



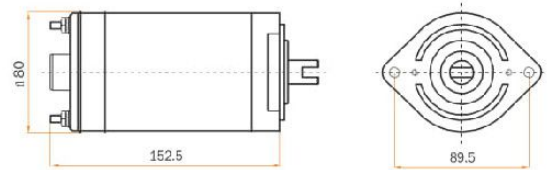
### Motori corrente continua ventilato e termocoppia *Fan D.C. motor and thermocouple*

56250A150M4F	Motore <i>Motor</i> 12V 1500W D.113 B14-71
4252BA200A2C	Motore <i>Motor</i> 12V 2000W D.113 B14-71
56250B200M4F	Motore <i>Motor</i> 24V 2000W D.113 B14-71
56250B300R2K	Motore <i>Motor</i> AMK-5513 24V 3KW
4252BA250B2C	Motore <i>Motor</i> 12V 2500W D.125 B14-71
4252BB250B2C	Motore <i>Motor</i> 24V 2500W D.125 B14-71



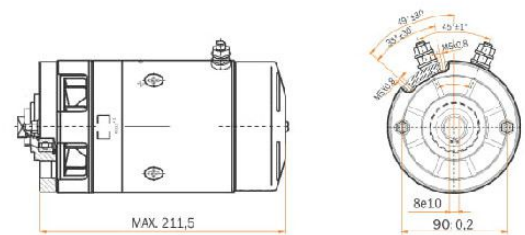
### Motori corrente continua senza teleruttore *Direct current motors without start relay*

56150A050E2K	Motore <i>Motor</i> AME-1726 12V 0,5 KW
56150B050E0K	Motore <i>Motor</i> AME-1557 24V 0,5KW
56150A080F1K	Motore <i>Motor</i> AME-1707 12V 0,8KW
56150B080F1K	Motore <i>Motor</i> AME-1709 24V 0,8KW



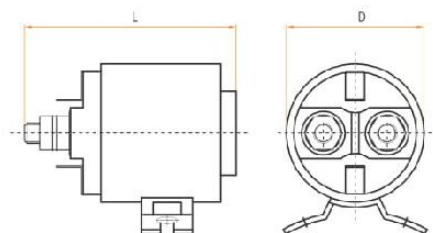
### Motori corrente continua ventilato senza termocoppia *Direct current fan motors without thermocouple*

56250A150L5K	Motore <i>Motor</i> AMJ-5143 12V 1,5KW
56250B220L5K	Motore <i>Motor</i> AMJ-5233 24V 2KW
42520ST2422K	Kit Termocoppia per motore <i>Motor thermocouple kit 12V-24V</i>



### Teleruttore di avviamento *Starting relay*

56252120800K	teleruttore <i>Relay</i> 12V 80A ARD1133	86	52
56252121500K	teleruttore <i>Relay</i> 12V 150A RINF. ARD1139	100	52
56252240800K	Teleruttore <i>Relay</i> 24V 80A ARD1134	86	52
56252241500K	Teleruttore <i>Relay</i> 24V 150A RINF. ARD1138	100	52
56252243000K	teleruttore <i>Relay</i> 24V 300A RINF. ARD1308	112,5	61



## MOTORI ELETTRICI *ELECTRIC MOTORS*

Codice Code	Descrizione Description	A (mm)	B (mm)	C (mm)
<b>Coperchio motore</b> <i>Protection cover for motor</i>				
56253010000H	Cuffia Cover UPE-9			
56253010000N	Cuffia Cover UPE-10*			

UPE 9

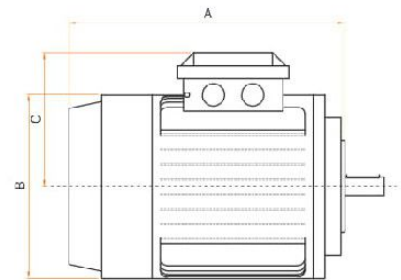
UPE 10

\* Solo per motore / Only for motor 12V 1800W - 24V 2000W

### Motori corrente alternata trifasi

A.C. threephase motors 230-400 VOLT 50 Hz B14 2 POLI

42303210B11_	Motore Motor	KW 0,37	B14 2p.230/400V 50Hz	219	137	108
42303210B21_	Motore Motor	KW 0,55	B14 2p. 230/400V 50Hz	219	137	108
42303210C11_	Motore Motor	KW 0,75	B14 2p. 230/400V 50Hz	233	156	122
42303210C21_	Motore Motor	KW 1	B14 2p.230/400V 50Hz	233	156	122
42303210D11_	Motore Motor	KW 1,5	B14 2p. 230/400V 50Hz	252	176	129
42303210D21_	Motore Motor	KW 2,2	B14 2p. 230/400V 50Hz	276	176	129
42303210E11_	Motore Motor	KW 3	B14 2p. 230/400V 50Hz	306	195	140
42303210F11_	Motore Motor	KW 4	B14 2p 230/400V 50Hz	325	220	160



### Motori corrente alternata trifasi

A.C. threephase motors 230-400 VOLT 50 Hz B14 4 POLI

42303410B11_	Motore Motor	KW 0,25	B14 4p. 230/400V 50Hz	219	137	108
42303410B21_	Motore Motor	KW 0,37	B14 4p.230/400V 50Hz	219	137	108
42303410C11_	Motore Motor	KW 0,55	B14 4p. 230/400V 50Hz	233	156	122
42303410C21_	Motore Motor	KW 0,75	B14 4p. 230/400V 50Hz	233	156	122
42303410D11_	Motore Motor	KW 1,1	B14 4p. 230/400V 50Hz	252	176	129
42303410D21_	Motore Motor	KW 1,5	B14 4p. 230/400V 50Hz	276	176	129
42303410E11_	Motore Motor	KW 2,2	B14 4p. 230/400V 50Hz	306	195	140
42303410E21_	Motore Motor	KW 3	B14 4p. 230/400V 50Hz	306	195	140
42303410F11_	Motore Motor	KW 4	B14 4p. 230/400V 50Hz	325	220	160

### Motori corrente alternata monofasi

A.C. singlephase motors 220 VOLT 50 Hz B14 2 POLI

42203210C21_	Motore Motor	KW 0,55	B14 2p. 220V 50Hz	219	137	108
42203210D21_	Motore Motor	KW 0,75	B14 2p. 220V 50Hz	233	156	122
42203210F11_	Motore Motor	KW 1,1	B14 2p. 220V 50Hz	233	156	122
42203210G11_	Motore Motor	KW 1,5	B14 2p. 220V 50Hz	252	176	129
42203210L11_	Motore Motor	KW 2,2	B14 2p. 220V 50Hz	276	176	129

### Motori corrente alternata monofasi

A.C. singlephase motors 220 VOLT 50 Hz B14 4 POLI

42203410C11_	Motore Motor	KW 0,25	B14 4p. 220V 50Hz	219	137	108
42203410D11_	Motore Motor	KW 0,37	B14 4p. 220V 50Hz	219	137	108
42203410D21_	Motore Motor	KW 0,55	B14 4p. 220V 50Hz	233	156	122
42203410E21_	Motore Motor	KW 0,75	B14 4p. 220V 50Hz	233	156	122
42203410G21_	Motore Motor	KW 1,1	B14 4p. 220V 50Hz	252	176	129
42203410G31_	Motore Motor	KW 1,5	B14 4p. 220V 50Hz	276	176	129