

ORBITROLS ET ACCESSOIRES - STEERING UNITS AND ACCESSORIES

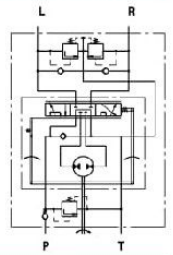
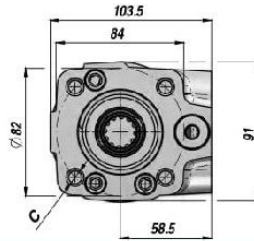
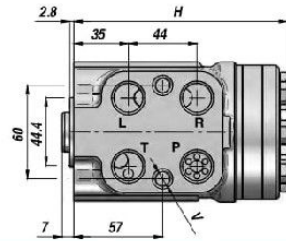
HKUS.../4

ORBITROL "M+S HYDRAULIC"
"M+S HYDRAULIC" STEERING UNIT

CENTRE OUVERT
OPEN CENTER

NON REACTIF
NON LOAD REACTION

AVEC VALVES
WITH VALVES



Code Code	Type Type	cm ³ /tr cm ³ /rev	LP RF bar	VAS SV bar	P MAX bar	P-T R-L BSP	V (x 2)	C (x 4)	H	kg
DHKUS04410	HKUS 40/4/100	39.6	100	160	140	1/2"	M10x1	M10	130.8	5.30
DHKUS05410	HKUS 50/4/100	49.5			140				132.2	5.40
DHKUS06410	HKUS 63/4/100	65.6			170				133.9	5.50
DHKUS08410	HKUS 80/4/100	79.2			170				136.2	5.60
DHKUS10410	HKUS 100/4/100	99.0			170				138.8	5.70
DHKUS12410	HKUS 125/4/100	123.8			170				142.2	5.80
DHKUS16410	HKUS 160/4/100	158.4			170				146.8	6.00
DHKUS20410	HKUS 200/4/100	198.0			170				152.2	6.30
DHKUS25410	HKUS 250/4/100	247.5			170				158.8	6.50
DHKUS32410	HKUS 320/4/100	316.8			170				168.2	7.00
DHKUS40410	HKUS 400/4/100	396.0			170				178.8	7.40
DHKUS50410	HKUS 500/4/100	495.0			170				192.0	8.00

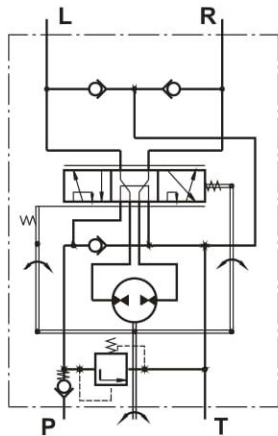
VALVES INTEGRES : VALVE ANTI-RETOUR + LIMITEUR DE PRESSION (LP) + VALVE ANTICAVITATION + VALVE ANTICHOCK (VA)

BUILT-IN VALVES : CHECK VALVE + RELIEF VALVE (RF) + ANTICAVITATION VALVES + SHOCK VALVES (SV)

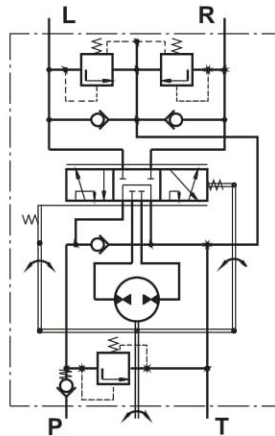
HYDROSTATIC STEERING UNITS TYPE HKUS.../3, 4, 8



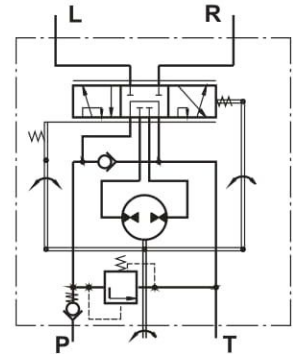
The HKUS Hydrostatic Steering unit is based on the HKU unit but has built-in relief and check valves. Thus M+S Hydraulic achieves one very compact steering unit which reduces the need for additional hydraulic components in the system.



"Open Center - Load Reaction"
HKUS.../3



"Open Center - Non Load Reaction"
HKUS.../4



"Open Center - Non Load Reaction"
HKUS.../8

SPECIFICATION DATA

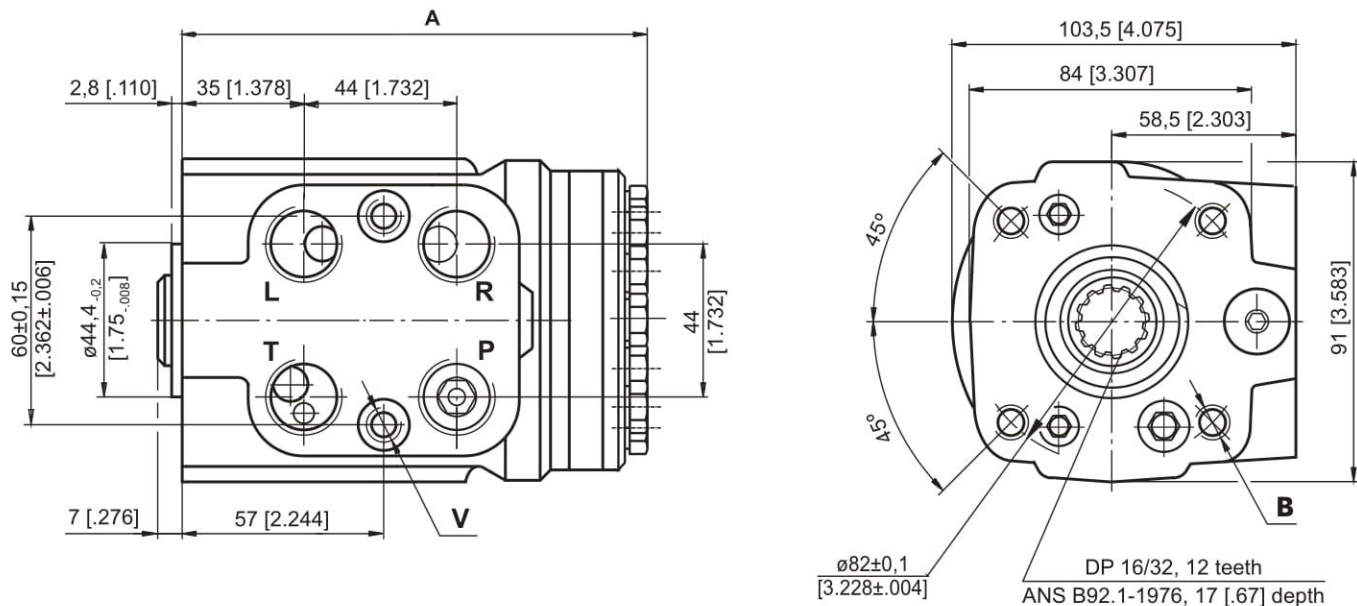
Parameters	Type												
	HKUS 40/3,4,8	HKUS 50/3,4,8	HKUS 63/3,4,8	HKUS 80/3,4,8	HKUS 100/3,4,8	HKUS 125/3,4,8	HKUS 160/3,4,8	HKUS 200/3,4,8	HKUS 250/3,4,8	HKUS 320/3,4,8	HKUS 400/3,4,8	HKUS 500/3,4,8	
Displacement	cm ³ /rev [in ³ /rev]	39,6 [2.42]	49,5 [3.0]	65,6 [4.0]	79,2 [4.83]	99,0 [6.04]	123,8 [7.56]	158,4 [9.67]	198 [12.1]	247,5 [15.1]	316,8 [19.3]	396 [24.2]	495 [30.2]
Rated Flow*	lpm [GPM]	4 [1.1]	5 [1.3]	6 [1.6]	8 [2.1]	10 [2.6]	13 [3.4]	16 [4.2]	20 [5.3]	25 [6.6]	32 [8.4]	40 [10.6]	50 [13.2]
Rated Pressure	bar [PSI]	140 [2030]			170 [2465]								
Relief Valve Pressure		80			100	125	150	170					
Settings**	bar [PSI]	[1160]			[1450]	[1810]	[2175]	[2465]					
Shock Valves Pressure		140			160	180	200	220					
Settings***	bar [PSI]	[2030]			[2320]	[2610]	[2900]	[3190]					
Max. Cont. Pressure in Line T	bar [PSI]	25 [363] (50 [725] by HKUS.../8) 40 [580]											
- standard													
- high pressure (H option)													
Max. Torque at Servoamplifying	Nm [lb-in]	3,0 [26]						3,0 [26]					
- with standard springs		1,8 [16]						-					
- with soft springs (LT option)													
Max. Torque w/o Servoamplifying	Nm [lb-in]	120 [1065]											
Weight	kg [lb]	5,3 [11.7]	5,4 [11.9]	5,5 [12.2]	5,6 [12.4]	5,7 [12.6]	5,8 [12.8]	6,0 [13.2]	6,3 [13.9]	6,5 [14.3]	7,0 [15.4]	7,4 [16.3]	8,0 [17.6]
Dimension A	mm [in]	130,8 [5.15]	132,2 [5.20]	133,9 [5.27]	136,2 [5.36]	138,8 [5.47]	142,2 [5.60]	146,8 [5.78]	152,2 [5.99]	158,8 [6.25]	168,2 [6.62]	178,8 [7.04]	192 [7.56]

* Rated Flow at 100 RPM.

** Pressure Settings are at Rated Flow (as in the table) and viscosity 21 mm²/s [105 SUS] at 50°C [122°F].

*** Pressure Settings are at flow rate of 2 lpm [.53 GPM] and viscosity 21 mm²/s [105 SUS] at 50°C [122°F].

DIMENSIONS AND MOUNTING DATA - HKUS.../3, 4, 8



Code	Ports - P*, T, R, L Thread	Column Mounting Thread - B	Valve Mounting Thread - V
-	G1/2 17 [.67] depth	4 x M10 18 [.71] depth	2 x M10x1 16 [.63] depth
M	M22x1,5 17 [.67] depth	4 x M10 18 [.71] depth	2 x M10x1 16 [.63] depth
A	3/4 - 16 UNF O-ring 17 [.67] depth	4 x 3/8 - 16 UNC 15,7 [.62] depth	2 x 3/8 - 24 UNF 14,2 [.56] depth

*Threaded Ports P min 15 [.59] depth for pipe mounting.