

Code Code	ØAL	F	LF	L	ØI	ØG	kg	Boîte Box	Pcs Pcs	Pochette de joints Seal kits
CTPM050021040	50	M20x1.5	28	40	21	M6	0.40	Z50CTPM050021	50	GKGCTPM050021
CTPM050025040 (A) NEW!	50	M22x1.5	28	40	25	M6	0.36	Z50CTPM050025	50	GKGCTPM050025
CTPM060030045 (A)	60	M27x2	30	45	30	M6	0.60	Z25CTPM060030	25	GKGCTPM060030
CTPM063030045 (A)	63	M27x2	30	45	30	M6	0.67	Z25CTPM063030	25	GKGCTPM063030
CTPM070035056 (A) NEW!	70	M33x2	41	56	35	M6	1.00	Z25CTPM070035	25	GKGCTPM070035
CTPM070040056	70	M30x2	41	56	40	M6	1.00	Z25CTPM070040	25	GKGCTPM070040
CTPM080040056	80	M30x2	41	56	40	M6	1.40	Z10CTPM080040	10	GKGCTPM080040
CTPM080041056 (A) NEW!	80	M33x2	41	56	40	M6	1.37	Z10CTPM080041	10	GKGCTPM080041
CTPM090038055	90	M36x3	40	55	38	M6	1.80	Z10CTPM090038	10	GKGCTPM090038
CTPM090043055 (A) NEW!	90	M40x2	40	55	43	M6	1.71	Z10CTPM090043	10	GKGCTPM090043
CTPM100045056 (A)	100	M42x2	41	56	45	M6	2.20	Z10CTPM100045	10	GKGCTPM100045
CTPM110050070 (A)	110	M48x3	55	70	50	M8	3.40	Z05CTPM110050	5	GKGCTPM110050
CTPM120050070	120	M48x3	55	70	50	M8	4.10	Z03CTPM120050	3	GKGCTPM120050
CTPM120054070 (A) NEW!	120	M52x2	55	70	54	M8	3.94	Z03CTPM120054	3	GKGCTPM120054
CTPM125050070	125	M48x3	55	70	51	M8	4.40	Z03CTPM125050	3	GKGCTPM125050
CTPM125054070 (A) NEW!	125	M52x2	55	70	54	M8	4.23	Z03CTPM125054	3	GKGCTPM125054
CTPM140050075	140	M48x3	57	75	50	M8	6.00			GKGCTPM140050
CTPM140067075 (A) NEW!	140	M64x3	57	75	67	M8	5.55			GKGCTPM140067
CTPM150056080	150	M52x3	60	80	56	M8	7.50			GKGCTPM150056
CTPM150067080 (A) NEW!	150	M64x3	60	80	67	M8	6.91			GKGCTPM150067
CTPM160056080	160	M52x3	60	80	56	M8	8.50			GKGCTPM160056
CTPM160076080 (A) NEW!	160	M74x3	60	80	76	M8	7.82			GKGCTPM160076
CTPM180090115	180	M80x2	85	115	90	M10	14.10			GKGCTPM180090
CTPM200100115	200	M90x2	85	115	100	M10	17.48			GKGCTPM200100
CTPM220110120	220	M100x2	90	120	110	M10	21.78			GKGCTPM220110
CTPM250125130	250	M115x3	100	130	125	M10	30.04			GKGCTPM250125
CTPM300150140	300	M140x3	105	140	150	M12	44.94			GKGCTPM300150

MATERIEL : ACIER UNI C40
MATERIAL : STEEL UNI C40

JOINTS : VOIR PAGE 84
SEALS : SEE PAGE 84

(A) = Conçu suivant le standard DNV PART 4 CHAPTER 7 RULES SHIPS / HIGH SPEED, LIGHT CRAFT AND NAVAL SURFACE CRAFT – PRESSURE
(A) = Designed in accordance with the norm DNV PART 4 CHAPTER 7 RULES SHIPS / HIGH SPEED, LIGHT CRAFT AND NAVAL SURFACE CRAFT – PRESSURE

GKGCTPM

Series P350

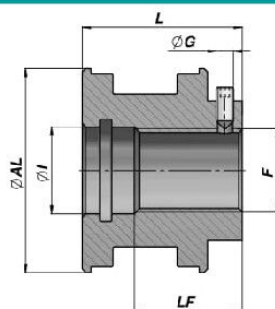
KIT JOINTS POUR PISTON "CTPM"
SEAL KITS FOR "CTPM" PISTON

Code Code	Alésage/Tarudage Bore/Thread	GAF 2x	PDH	O-Ring Dowty	GKS (x2) Dowty
GKGCTPM050021	50 / 21	50x 45x 5.6	103	812	-
GKGCTPM050025	50 / 25	50x 45x 5.6	103	120	-
GKGCTPM060030	60 / 30	60x 55x 5.6	106	217	-
GKGCTPM063030	63 / 30	63x 58x 5.6	108	217	-
GKGCTPM070035	70 / 35	70x 65x 9.7	110	126	-
GKGCTPM070040	70 / 40	70x 65x 9.7	110	129	-
GKGCTPM080040	80 / 40	80x 75x 9.7	113	129	-
GKGCTPM080041	80 / 40	80x 75x 9.7	113	129	-
GKGCTPM090038	90 / 38	90x 85x 9.7	116	128	-
GKGCTPM090043	90 / 43	90x 85x 9.7	116	131	-
GKGCTPM100045	100 / 45	100x 95x 9.7	119	133	-
GKGCTPM110050	110 / 50	100x105x 9.7	120	830	-
GKGCTPM120050	120 / 50	120x115x 9.7	122	830	-
GKGCTPM120054	120 / 54	120x115x 9.7	122	227	-
GKGCTPM125050	125 / 50	125x120x 9.7	123	831	-
GKGCTPM125054	125 / 54	125x120x 9.7	123	227	-
GKGCTPM140050	140 / 50	140x135x 9.7	128	830	-
GKGCTPM140067	140 / 67	140x135x 9.7	128	231	-
GKGCTPM150056	150 / 56	150x145x 9.7	131	834	-
GKGCTPM150067	150 / 67	150x145x 9.7	131	231	-
GKGCTPM160056	160 / 56	160x155x 9.7	132	834	-
GKGCTPM160076	160 / 76	160x155x 9.7	132	234	-
GKGCTPM180090	180 / 90	172x180x20	135	621	621
GKGCTPM200100	200 / 100	192x200x20	137/1	622	622
GKGCTPM220110	220 / 110	212x220x20	138/1	623	623
GKGCTPM250125	250 / 125	240x250x25	140	862	862
GKGCTPM300150	300 / 150	290x300x25	144	870	870

PISTON TARAUDE AVEC VIS DE BLOCAGE
THREADED PISTON WITH GRUB SCREW

CTFV

Series M250



Code Code	ØAL	F	LF	L	ØI	ØG	kg	Boîte Box	Pcs Pcs	Pochette de joints Seal kits
*CTFV0251015	25	M10x1.5	23	30.5	11	M3	0,02	Z50CTFV0251015	50	GKGCTFV025010
*CTFV0301215	30	M12x1.5	23	30.5	13	M3	0,03	Z50CTFV0301215	50	GKGCTFV030012
CTFV0321215	32	M12x1.5	25	33.0	13	M3	0,11	Z50CTFV0321215	50	GKGCTFV032012
CTFV0351215	35	M12x1.5	32	40.0	13	M3	0,17	Z50CTFV0351215	50	GKGCTFV035012
CTFV0401615	40	M16x1.5	32	42.0	17	M4	0,22	Z50CTFV0401615	50	GKGCTFV040016
CTFV0451615	45	M16x1.5	32	42.0	17	M4	0,29	Z50CTFV0451615	50	GKGCTFV045016
CTFV0502015	50	M20x1.5	32	44.0	21	M4	0,31	Z50CTFV0502015	50	GKGCTFV050020
CTFV0552015	55	M20x1.5	32	44.0	21	M4	0,41	Z25CTFV0552015	25	GKGCTFV055020
CTFV0602420	60	M24x2	31	46.0	25	M5	0,50	Z25CTFV0602420	25	GKGCTFV060024
CTFV0632420	63	M24x2	31	46.0	25	M5	0,57	Z25CTFV0632420	25	GKGCTFV063024
CTFV0652420	65	M24x2	31	46.0	25	M5	0,63	Z25CTFV0652420	25	GKGCTFV065024
CTFV0702420	70	M24x2	34	49.0	25	M5	0,75	Z25CTFV0702420	25	GKGCTFV070024
CTFV0752720	75	M27x2	37	52.0	28	M6	0,91	Z20CTFV0752720	20	GKGCTFV075027
CTFV0802720	80	M27x2	37	52.0	28	M6	1,07	Z20CTFV0802720	20	GKGCTFV080027
CTFV0852720	85	M27x2	37	52.0	28	M6	1,24	Z10CTFV0852720	10	GKGCTFV085027
CTFV0903320	90	M33x2	37	52.0	35	M6	1,38	Z10CTFV0903320	10	GKGCTFV090033
CTFV1003320	100	M33x2	39	54.0	35	M6	1,76	Z10CTFV1003320	10	GKGCTFV100033
CTFV1103930	110	M39x3	42	57.0	42	M8	2,29	Z05CTFV1103930	5	GKGCTFV110039
CTFV1204230	120	M42x3	42	57.0	45	M8	2,80	Z03CTFV1204230	3	GKGCTFV120042
CTFV1254230	125	M42x3	44	59.0	45	M8	3,16	Z03CTFV1254230	3	GKGCTFV125042
CTFV1404830	140	M48x3	47	65.0	51	M8	4,61			GKGCTFV140048
CTFV1504830	150	M48x3	47	65.0	51	M8	5,43			GKGCTFV150048
CTFV1605230	160	M52x3	47	65.0	54	M8	6,24			GKGCTFV160052

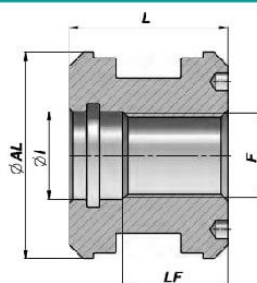
MATERIEL : ACIER 9SMn28 - UNI C40 - * = ALUMINIUM UNI 2011-11S
MATERIAL : STEEL 9SMn28 - UNI C40 - * = ALUMINIUM UNI 2011-11S

JOINTS : VOIR PAGE 85
SEALS : SEE PAGE 85
SUR DEMANDE : KIT JOINTS IN VITON
ON REQUEST : VITON SEAL KITS

PISTON TARAUDE
THREADED PISTON

CTF

Series M250



Code Code	ØAL	F	LF	L	ØI	kg	Boîte Box	Pcs Pcs	Pochette de joints Seal kits
*CTF2510125	25	M10x1.5	17.5	25	11	0,01	Z00CTF2510125	100	GKGF025010
CTF0401615	40	M16x1.5	30.0	40	17	0,22	Z50CTF0401615	50	GKGF040016
CTF0502015	50	M20x1.5	28.0	40	21	0,31	Z50CTF0502015	50	GKGF050020
CTF0602420	60	M24x2	30.0	45	25	0,58	Z25CTF0602420	25	GKGF060024
CTF0632420	63	M24x2	30.0	45	25	0,66	Z25CTF0632420	25	GKGF063024
CTF0702420	70	M24x2	30.0	45	25	0,78	Z25CTF0702420	25	GKGF070024
CTF0802720	80	M27x2	30.0	45	28	1,08	Z20CTF0802720	20	GKGF080027
CTF0903320	90	M33x2	35.0	50	35	1,57	Z10CTF0903320	10	GKGF090033
CTF1003320	100	M33x2	35.0	50	35	2,18	Z10CTF1003320	10	GKGF100033
CTF1103930	110	M39x3	35.0	50	42	2,40	Z10CTF1103930	10	GKGF110039
CTF1204230	120	M42x3	35.0	50	45	3,00	Z06CTF1204230	6	GKGF120042
CTF1254230	125	M42x3	35.0	50	45	3,20	Z06CTF1254230	6	GKGF125042
CTF1404830	140	M48x3	40.0	58	51	4,90			GKGF140048
CTF1504830	150	M48x3	40.0	58	51	5,80			GKGF150048
CTF1605230	160	M52x3	40.0	58	54	6,70			GKGF160052

MATERIEL : ACIER 9SMn28 - UNI C40 - * = ALUMINIUM UNI 2011-11S
MATERIAL : STEEL 9SMn28 - UNI C40 - * = ALUMINIUM UNI 2011-11S

JOINTS : VOIR PAGE 84
SEALS : SEE PAGE 84
SUR DEMANDE : KIT JOINTS IN VITON
ON REQUEST : VITON SEAL KITS

GKGF

Series M250

**KIT JOINTS POUR PISTON "CTF"
SEAL KITS FOR "CTF" PISTON**

Code Code	Alésage/Taraudage Bore/Thread	TPM - TPS/G	O-Ring Dowty
GKGF025010	25 / 10	TPS/G 098066	806
GKGF040016	40 / 16	TPM 157118	017
GKGF050020	50 / 20	TPM 196133	812
GKGF060024	60 / 24	TPM 236173	120
GKGF063024	63 / 24	TPM 248185	120
GKGF070024	70 / 24	TPM 275196	120
GKGF080027	80 / 27	TPM 314236	216
GKGF090033	90 / 33	TPM 354275	220
GKGF100033	100 / 33	TPM 393295	220
GKGF110039	110 / 39	TPM 433334	825
GKGF120042	120 / 42	TPM 472374	827
GKGF125042	125 / 42	TPM 492393	827
GKGF140048	140 / 48	TPM 551452	831
GKGF150048	150 / 48	TPM 590492	831
GKGF160052	160 / 52	TPM 629531	833

KIT JOINTS POUR PISTON "CTFV"
SEAL KITS FOR "CTFV" PISTON

Series M250

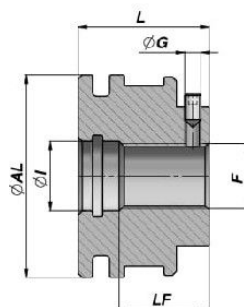
GKGCTFV

Code Code	Alésage/Taroudage Bore/Thread	TPM - TPL - TPS/G	O-Ring Dowty
GKGCTFV025010	25 / 10	TPS/G 098066	806
GKGCTFV030012	30 / 12	TPL 118078	014
GKGCTFV032012	32 / 12	TPS/G 125094	014
GKGCTFV035012	35 / 12	TPM 137098	014
GKGCTFV040016	40 / 16	TPM 157118	017
GKGCTFV045016	45 / 16	TPM 177137	017
GKGCTFV050020	50 / 20	TPM 196133	812
GKGCTFV055020	55 / 20	TPM 216153	812
GKGCTFV060024	60 / 24	TPM 236173	120
GKGCTFV063024	63 / 24	TPM 248185	120
GKGCTFV065024	65 / 24	TPM 255196	120
GKGCTFV070024	70 / 24	TPM 275196	120
GKGCTFV075027	75 / 27	TPM 295216	216
GKGCTFV080027	80 / 27	TPM 314236	216
GKGCTFV085027	85 / 27	TPM 334255	216
GKGCTFV090033	90 / 33	TPM 354275	220
GKGCTFV100033	100 / 33	TPM 393295	220
GKGCTFV110039	110 / 39	TPM 433334	825
GKGCTFV120042	120 / 42	TPM 472374	827
GKGCTFV125042	125 / 42	TPM 492393	827
GKGCTFV140048	140 / 48	TPM 551452	831
GKGCTFV150048	150 / 48	TPM 590492	831
GKGCTFV160052	160 / 52	TPM 629531	833

PISTON TARAUDE AVEC SON GRAIN POUR JOINT BASSE FRICTION
THREADED PISTON WITH GRUB SCREW FOR LOW FRICTION SEAL

CTFGV

Series M250



Code Code	ØAL	F	LF	L	ØI	ØG	kg	Boîte Box	Pcs Pcs	Pochette de joints Seal kits
CTFGV0301215	30	M12x1.5	22.5	30	13	M3	0,10	Z50CTFGV0301215	50	GKGCTFGV03012
CTFGV0321215	32	M12x1.5	22.0	30	13	M3	0,12	Z50CTFGV0321215	50	GKGCTFGV03212
CTFGV0351215	35	M12x1.5	22.0	30	13	M3	0,15	Z50CTFGV0351215	50	GKGCTFGV03512
CTFGV0401615	40	M16x1.5	22.0	32	17	M4	0,19	Z50CTFGV0401615	50	GKGCTFGV04016
CTFGV0451615	45	M16x1.5	22.0	32	17	M4	0,25	Z50CTFGV0451615	50	GKGCTFGV04516
CTFGV0501615	50	M16x1.5	22.0	32	17	M4	0,31	Z50CTFGV0501615	50	GKGCTFGV05016
CTFGV0552015	55	M20x1.5	23.0	35	21	M4	0,39	Z25CTFGV0552015	25	GKGCTFGV05520
CTFGV0602420	60	M24x2	25.0	40	25	M5	0,53	Z25CTFGV0602420	25	GKGCTFGV06024
CTFGV0632420	63	M24x2	25.0	40	25	M5	0,60	Z25CTFGV0632420	25	GKGCTFGV06324
CTFGV0652420	65	M24x2	25.0	40	25	M5	0,64	Z25CTFGV0652420	25	GKGCTFGV06524
CTFGV0702420	70	M24x2	25.0	40	25	M5	0,78	Z25CTFGV0702420	25	GKGCTFGV07024
CTFGV0752720	75	M27x2	30.0	45	28	M6	1,00	Z20CTFGV0752720	20	GKGCTFGV07527
CTFGV0802720	80	M27x2	30.0	45	28	M6	1,11	Z20CTFGV0802720	20	GKGCTFGV08027
CTFGV0852720	85	M27x2	30.0	45	28	M6	1,27	Z10CTFGV0852720	10	GKGCTFGV08527
CTFGV0903320	90	M33x2	33.0	48	35	M6	1,54	Z10CTFGV0903320	10	GKGCTFGV09033
CTFGV1003320	100	M33x2	33.0	48	35	M6	1,93	Z10CTFGV1003320	10	GKGCTFGV10033
CTFGV1103930	110	M39x3	35.0	50	42	M8	2,39	Z05CTFGV1103930	5	GKGCTFGV11039
CTFGV1204230	120	M42x3	35.0	50	45	M8	2,86	Z03CTFGV1204230	3	GKGCTFGV12042
CTFGV1254230	125	M42x3	37.0	52	45	M8	3,29	Z03CTFGV1254230	3	GKGCTFGV12542
CTFGV1404830	140	M48x3	40.0	55	51	M8	4,37			GKGCTFGV14048
CTFGV1504830	150	M48x3	40.0	55	51	M8	5,07			GKGCTFGV15048
CTFGV1605230	160	M52x3	45.0	60	54	M8	6,42			GKGCTFGV16052

MATERIEL : ACIER 9SMn28 - UNI C40
 MATERIAL : STEEL 9SMn28 - UNI C40

JOINTS : VOIR PAGE 86
 SEALS : SEE PAGE 86

Compatible aussi avec joint "TTO"
 It also matches the seal "TTO"

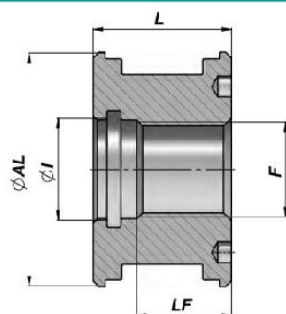
GKGCTFGV**Series M250****KIT JOINTS POUR PISTON "CTFGV"
SEAL KITS FOR "CTFGV" PISTON**

Code Code	Alésage/Taroudage Bore/Thread	AGE	GER	O-Ring Dowty
GKGCTFGV03012	30 / 12	30x 26x 9.7	0300	014
GKGCTFGV03212	32 / 12	32x 27x 9.7	0320	014
GKGCTFGV03512	35 / 12	35x 30x 9.7	0350	014
GKGCTFGV04016	40 / 16	40x 36x 9.7	0400	017
GKGCTFGV04516	45 / 16	45x 41x 9.7	0450	017
GKGCTFGV05016	50 / 16	50x 44x 9.7	0500	017
GKGCTFGV05520	55 / 20	55x 49x12.8	0550	812
GKGCTFGV06024	60 / 24	60x 54x12.8	0600	120
GKGCTFGV06324	63 / 24	63x 57x12.8	0630	120
GKGCTFGV06524	65 / 24	65x 59x12.8	0650	120
GKGCTFGV07024	70 / 24	70x 64x12.8	0700	120
GKGCTFGV07527	75 / 27	75x 69x12.8	0750	216
GKGCTFGV08027	80 / 27	80x 74x12.8	0800	216
GKGCTFGV08527	85 / 27	85x 79x12.8	0850	216
GKGCTFGV09033	90 / 33	90x 84x12.8	0900	220
GKGCTFGV10033	100 / 33	100x 94x12.8	1000	220
GKGCTFGV11039	110 / 39	100x104x12.8	1100	825
GKGCTFGV12042	120 / 42	120x114x12.8	1200	827
GKGCTFGV12542	125 / 42	125x119x12.8	1250	827
GKGCTFGV14048	140 / 48	140x134x12.8	1400	831
GKGCTFGV15048	150 / 48	150x144x12.8	1500	831
GKGCTFGV16052	160 / 52	160x154x19.2	1600	833

CTBF

PISTON TARAUDE
THREADED PISTON

Series M250



Code Code	ØAL	F	LF	L	ØI	kg	Boîte Box	Pcs Pcs	Pochette de joints Seal kits
CTBF030M12	30	M12x1.5	17	25	13	0,07	Z00CTBF030M12	100	GKGB030012
CTBF032M12	32	M12x1.5	19	27	13	0,09	Z00CTBF032M12	100	GKGB032012
CTBF035M12	35	M12x1.5	19	27	13	0,12	Z00CTBF035M12	100	GKGB035012
CTBF040M16	40	M16x1.5	19	27	17	0,17	Z00CTBF040M16	100	GKGB040016
CTBF045M16	45	M16x1.5	21	30	17	0,25	Z50CTBF045M16	50	GKGB045016
CTBF050M20	50	M20x1.5	21	30	21	0,29	Z50CTBF050M20	50	GKGB050020
CTBF055M20	55	M20x1.5	24	35	21	0,35	Z25CTBF055M20	25	GKGB055020
CTBF060M24	60	M24x2	24	35	25	0,45	Z25CTBF060M24	25	GKGB060024
CTBF063M24	63	M24x2	24	35	25	0,50	Z25CTBF063M24	25	GKGB063024
CTBF065M24	65	M24x2	24	35	25	0,53	Z25CTBF065M24	25	GKGB065024
CTBF070M24	70	M24x2	24	35	25	0,70	Z25CTBF070M24	25	GKGB070024
CTBF075M27	75	M27x2	24	35	28	0,81	Z20CTBF075M27	20	GKGB075027
CTBF080M27	80	M27x2	26	40	28	1,06	Z20CTBF080M27	20	GKGB080027
CTBF085M27	85	M27x2	26	40	28	1,34	Z10CTBF085M27	10	GKGB085027
CTBF090M33	90	M33x2	26	40	35	1,34	Z10CTBF090M33	10	GKGB090033
CTBF100M33	100	M33x2	26	40	35	1,76	Z10CTBF100M33	10	GKGB100033

MATERIEL : ACIER 9SMn28 - UNI C40
MATERIAL : STEEL 9SMn28 - UNI C40

JOINTS : VOIR PAGE 85
SEALS : SEE PAGE 85

SUR DEMANDE : KIT JOINTS IN VITON
ON REQUEST : VITON SEAL KITS

KIT JOINTS POUR PISTON "CTBF"
SEAL KITS FOR "CTBF" PISTON

Series M250

GKGB

Code Code	Alésage/Taraudage Bore/Thread	TPS/G - TPL - TPM	O-Ring Dowty
GKGB030012	30 / 12	TPL 118078	014
GKGB032012	32 / 12	TPS/G 125094	014
GKGB035012	35 / 12	TPS/G 137106	014
GKGB040016	40 / 16	TPS/G 157125/1	017
GKGB045016	45 / 16	TPS/G 177145	017
GKGB050020	50 / 20	TPS/G 196157	812
GKGB055020	55 / 20	TPL 216153	812
GKGB060024	60 / 24	TPS/G 236188	120
GKGB063024	63 / 24	TPS/G 248200	120
GKGB065024	65 / 24	TPL 255192	120
GKGB070024	70 / 24	TPS/G 275228	120
GKGB075027	75 / 27	TPS/G 295248	216
GKGB080027	80 / 27	TPS/G 314255	216
GKGB085027	85 / 27	TPM 334255	216
GKGB090033	90 / 33	TPS/G 354299	220
GKGB100033	100 / 33	TPS/G 393334	220