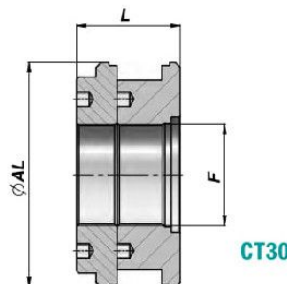


CT



CT30

Series M250

Code Code	ØAL	ØI-F	L	kg	Boîte Box	Pcs Pcs	Pochette de joints Seal kits
*CT00030013	30	13	24.7	0,02	Z00CT00030013	100	GKGCT030013
CT00032013	32	13	30	0,10	Z00CT00032013	100	GKGCT032013
CT00032015	32	15	30	0,09	Z00CT00032015	100	GKGCT032015
CT00035015	35	15	40	0,16	Z50CT00035015	50	GKGCT035015
CT00040015	40	15	40	0,23	Z50CT00040015	50	GKGCT040015
CT00045015	45	15	40	0,31	Z50CT00045015	50	GKGCT045015
CT00050015	50	15	40	0,36	Z50CT00050015	50	GKGCT050015
CT00050020	50	20	40	0,31	Z50CT00050020	50	GKGCT050020
CT00055020	55	20	40	0,42	Z25CT00055020	25	GKGCT055020
CT00060020	60	20	50	0,71	Z25CT00060020	25	GKGCT060020
CT00060024	60	24	45	0,56	Z25CT00060024	25	GKGCT060024
CT00060027	60	27	50	0,61	Z25CT00060027	25	GKGCT060027
CT00063020	63	20	50	0,81	Z25CT00063020	25	GKGCT063020
CT00063024	63	24	45	0,65	Z25CT00063024	25	GKGCT063024
CT00065020	65	20	50	0,88	Z25CT00065020	25	GKGCT065020
CT00065024	65	24	45	0,72	Z25CT00065024	25	GKGCT065024
CT00070020	70	20	50	0,94	Z25CT00070020	25	GKGCT070020
CT00070024	70	24	45	0,78	Z25CT00070024	25	GKGCT070024
CT00070027	70	27	50	0,83	Z25CT00070027	25	GKGCT070027
CT00075024	75	24	45	0,95	Z20CT00075024	20	GKGCT075024
CT00075027	75	27	50	1,00	Z20CT00075027	20	GKGCT075027
CT00080024	80	24	45	1,11	Z20CT00080024	20	GKGCT080024
CT00080027	80	27	50	1,23	Z20CT00080027	20	GKGCT080027
CT00085024	85	24	45	1,30	Z10CT00085024	10	GKGCT085024
CT00085027	85	27	50	1,43	Z10CT00085027	10	GKGCT085027
CT00090027	90	27	50	1,66	Z10CT00090027	10	GKGCT090027
CT00090033	90	33	50	1,55	Z10CT00090033	10	GKGCT090033
CT00100027	100	27	50	2,06	Z10CT00100027	10	GKGCT100027
CT00100033	100	33	50	1,95	Z10CT00100033	10	GKGCT100033
CT00110033	110	33	50	2,49	Z10CT00110033	10	GKGCT110033
CT00110040	110	40	50	2,33	Z10CT00110040	10	GKGCT110040
CT00120040	120	40	50	2,95	Z06CT00120040	6	GKGCT120040
CT00125040	125	40	50	3,19	Z06CT00125040	6	GKGCT125040
CT00140040	140	40	58	5,07			GKGCT140040
CT00150040	150	40	58	5,97			GKGCT150040
CT00160051	160	51	58	6,60			GKGCT160051
CT30							
CT11180080	180	M80x2	82	9,80			GKG11180F80
CT11200080	200	M80x2	82	13,00			GKG11200F80
CT11250080	250	M98x2	82	21,70			GKG11250F98

MATERIEL : ACIER 9SMn28 - UNI C40 - * = ALUMINIUM UNI 2011-11S
 MATERIAL : STEEL 9SMn28 - UNI C40 - * = ALUMINIUM UNI 2011-11S

JOINTS : VOIR PAGE 83
 SEALS : SEE PAGE 83

SUR DEMANDE : KIT JOINTS IN VITON
 ON REQUEST : VITON SEAL KITS

KIT JOINTS POUR PISTON "CT"
SEAL KITS FOR "CT" PISTON

Series M250

GKGCT

Code Code	Alésage/Perç. Piston Bore/Hole	TPM TPS/G - TPL	O-Ring Dowty
GKGCT030013	30 / 13	TPL 118078	014
GKGCT032013	32 / 13	TPS/G 125094	014
GKGCT032015	32 / 15	TPS/G 125094	616
GKGCT035015	35 / 15	TPM 137098	616
GKGCT040015	40 / 15	TPM 157118	616
GKGCT045015	45 / 15	TPM 177137	616
GKGCT050015	50 / 15	TPM 196133	616
GKGCT050020	50 / 20	TPM 196133	117
GKGCT055020	55 / 20	TPM 216153	117
GKGCT060020	60 / 20	TPM 236173	117
GKGCT060024	60 / 24	TPM 236173	814
GKGCT060027	60 / 27	TPM 236173	215
GKGCT063020	63 / 20	TPM 248185	117
GKGCT063024	63 / 24	TPM 248185	814
GKGCT065020	65 / 20	TPM 255196	117
GKGCT065024	65 / 24	TPM 255196	814
GKGCT070020	70 / 20	TPM 275196	117
GKGCT070024	70 / 24	TPM 275196	814
GKGCT070027	70 / 27	TPM 275196	215
GKGCT075024	75 / 24	TPM 295216	814
GKGCT075027	75 / 27	TPM 295216	215
GKGCT080024	80 / 24	TPM 314236	814
GKGCT080027	80 / 27	TPM 314236	215
GKGCT085024	85 / 24	TPM 334255	814
GKGCT085027	85 / 27	TPM 334255	215
GKGCT090027	90 / 27	TPM 354275	215
GKGCT090033	90 / 33	TPM 354275	219
GKGCT100027	100 / 27	TPM 393295	215
GKGCT100033	100 / 33	TPM 393295	219
GKGCT110033	110 / 33	TPM 433334	219
GKGCT110040	110 / 40	TPM 433334	824
GKGCT120040	120 / 40	TPM 472374	824
GKGCT125040	125 / 40	TPM 492393	824
GKGCT140040	140 / 40	TPM 551452	824
GKGCT150040	150 / 40	TPM 590492	824
GKGCT160051	160 / 51	TPM 629531	831

KIT JOINTS POUR PISTON "CT"
SEAL KITS FOR "CT" PISTON

Series M250

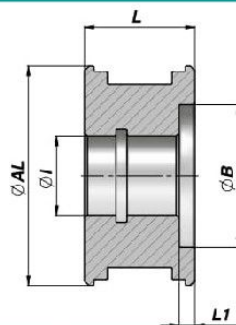
GKGCT

Code Code	Alésage/Perç. Piston Bore/Hole	TDE	O-Ring Dowty
GKG11180F80	180 / 80	708590	339
GKG11200F80	200 / 80	787669	339
GKG11250F98	250 / 98	984866	345

PISTON
PISTON

CTLM

Series C200



Code Code	ØAL	ØI	L	ØB	L1	kg	Boîte Box	Pcs Pcs	Pochette de joints Seal kits
CTLM040015027	40	15	27	27	5	0,15	Z50CTLM040015	50	GKGCTLM040015
CTLM050021030	50	21	30	36	5	0,25	Z50CTLM050021	50	GKGCTLM050021
CTLM060025035	60	25	35	45	5	0,40	Z25CTLM060025	25	GKGCTLM060025
CTLM070025035	70	25	35	45	5	0,59	Z25CTLM070025	25	GKGCTLM070025
CTLM080028040	80	28	40	50	6	0,95	Z20CTLM080028	20	GKGCTLM080028
CTLM100035040	100	35	40	60	6	1,60	Z10CTLM100035	10	GKGCTLM100035

MATERIEL : ACIER 9SMn28 - UNI C40
MATERIAL : STEEL 9SMn28 - UNI C40

JOINTS : VOIR PAGE 83
SEALS : SEE PAGE 83

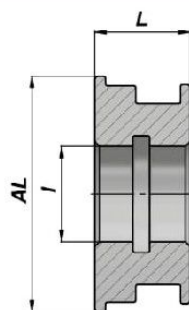
SUR DEMANDE : KIT JOINTS IN VITON
ON REQUEST : VITON SEAL KITS

PISTON POUR VERIN SIMPLE EFFET
PISTON FOR SINGLE ACTING CYLINDER

NEW!

CTSE

Series M250



Code Code	ØAL	ØI	L	kg	Boîte Box	Pcs Pcs	Pochette de joints Seal kits
CTSE040015	40	15	20	0,11	Z00CTSE040015	100	GKGCTSE040015
CTSE050020	50	20	25	0,21	Z50CTSE050020	50	GKGCTSE050020
CTSE060020	60	20	25	0,35	Z25CTSE060020	25	GKGCTSE060020
CTSE063024	63	24	25	0,35	Z25CTSE063024	25	GKGCTSE063024
CTSE070027	70	27	28	0,45	Z25CTSE070027	25	GKGCTSE070027
CTSE080027	80	27	28	0,66	Z20CTSE080027	20	GKGCTSE080027
CTSE090033	90	33	30	0,93	Z20CTSE090033	20	GKGCTSE090033
CTSE100033	100	33	30	1,23	Z10CTSE100033	10	GKGCTSE100033

MATERIEL : ACIER 9SMn28 - UNI C40
MATERIAL : STEEL 9SMn28 - UNI C40

JOINTS : VOIR PAGE 84
SEALS : SEE PAGE 84

KIT JOINTS POUR PISTON "CTLM"
SEAL KITS FOR "CTLM" PISTON

Series C200

GKGCTLM

Code Code	Alésage/Perç. Piston Bore/Hole	TPS/G	O-Ring Dowty
GKGCTLM040015	40 / 15	157125/1	616
GKGCTLM050021	50 / 21	196157	812
GKGCTLM060025	60 / 25	236188	120
GKGCTLM070025	70 / 25	275228	120
GKGCTLM080028	80 / 28	314255	216
GKGCTLM100035	100 / 35	393334	220

GKGCTSE

Series M250

KIT JOINTS POUR PISTON "CTSE"
SEAL KITS FOR "CTSE" PISTON

Code Code	Alésage/Perç. Piston Bore/Hole	TTE/W	O-Ring Dowty
GKGCTSE040015	40 / 15	40-30- 7.0 -W	616
GKGCTSE050020	50 / 20	50-35-10.0 -W	117
GKGCTSE060020	60 / 20	60-45-10.0 -W	117
GKGCTSE063024	63 / 24	63-45-10.0 -W	814
GKGCTSE070027	70 / 27	70-50-13.5 -W	215
GKGCTSE080027	80 / 27	80-60-13.5 -W1	215
GKGCTSE090033	90 / 33	90-70-13.5 -W1	219
GKGCTSE100033	100 / 33	100-80-13.5 -W	219