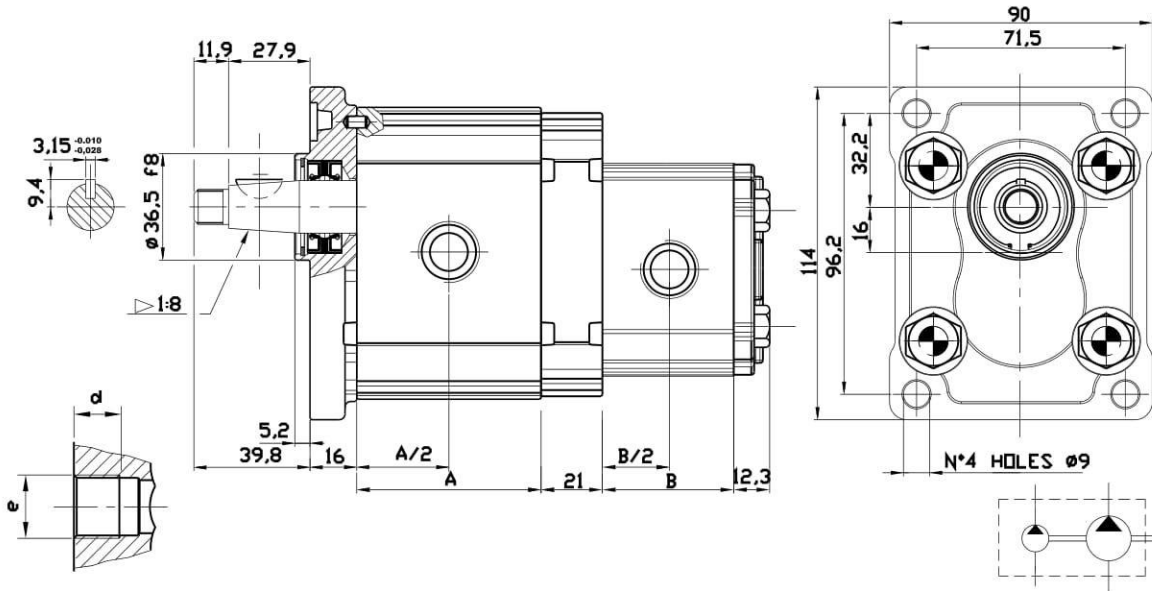


# TANDEM PUMPS- OT200+ OT100

**VERSION: G28 P2**



**TABLE 1 OT200**

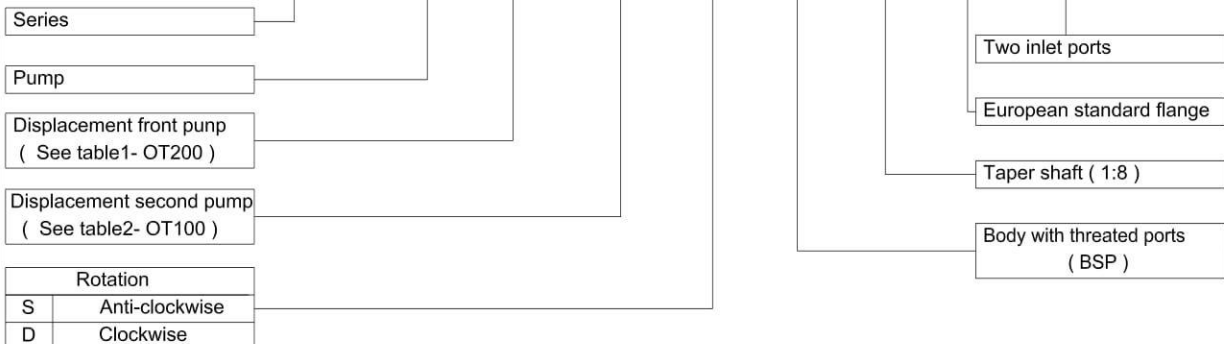
Type	Displacement (cc/rev)	Dim. A (mm)	Inlet port		Outlet port	
			e	d	e	d
OT 200 P04	04,10	48,00	G1/2	14	G1/2	14
OT 200 P06	06,20	51,00	G1/2	14	G1/2	14
OT 200 P08	08,20	54,00	G1/2	14	G1/2	14
OT 200 P11	11,20	58,30	G1/2	14	G1/2	14
OT 200 P14	14,00	62,30	G3/4	16	G1/2	14
OT 200 P16	16,00	65,20	G3/4	16	G1/2	14
OT 200 P20	20,00	71,00	G3/4	16	G1/2	14
OT 200 P22	22,50	82,70	G3/4	16	G1/2	14
OT 200 P25	25,10	86,50	G3/4	16	G1/2	14
OT 200 P28	28,00	90,70	G3/4	16	G1/2	14
OT 200 P30	30,00	93,50	G3/4	16	G1/2	14

**TABLE 2 OT100**

	Displacement (cc/rev)	Dim. B (mm)	Inlet port		Outlet port	
			e	d	e	d
OT 100 P07	0.73	36.7	G3/8	14	G3/8	14
OT 100 P11	1.05	37.8	G3/8	14	G3/8	14
OT 100 P16	1.55	39.5	G3/8	14	G3/8	14
OT 100 P20	1.90	40.9	G3/8	14	G3/8	14
OT 100 P25	2.50	43.0	G3/8	14	G3/8	14
OT 100 P32	3.10	45.0	G3/8	14	G3/8	14
OT 100 P40	3.80	47.8	G3/8	14	G3/8	14
OT 100 P49	4.70	50.9	G3/8	14	G3/8	14
OT 100 P58	5.55	54.0	G1/2	14	G3/8	14
OT 100 P65	6.25	56.5	G1/2	14	G3/8	14
OT 100 P79	7.60	61.2	G1/2	14	G3/8	14

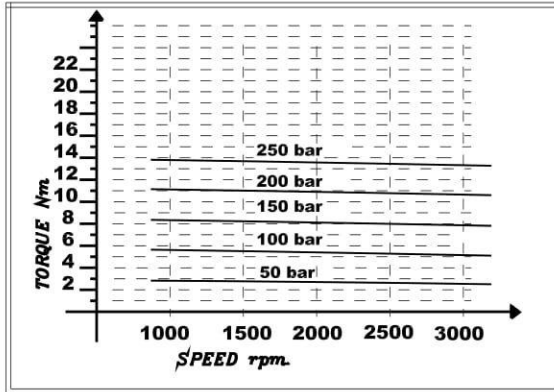
NOTE: Define relative working and peak pressure consulting relative single pump table.

**OT200/100 P 16 / 32 S / G 28 P2 / 2**

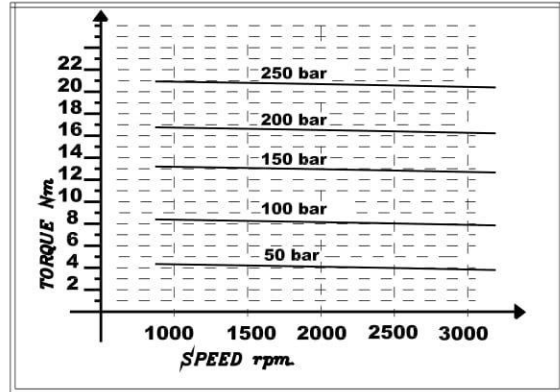


## GROUP2 MOTORS - TORQUE CHARACTERISTICS CURVES

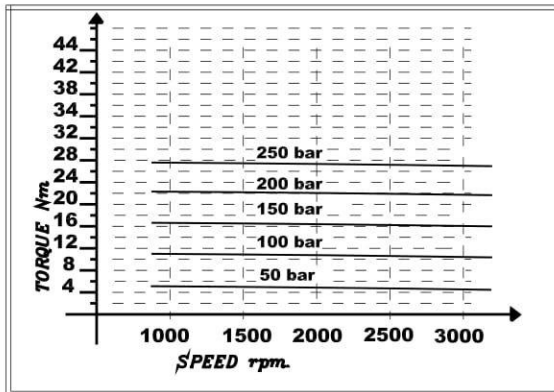
**MOTORS OT200 M04**



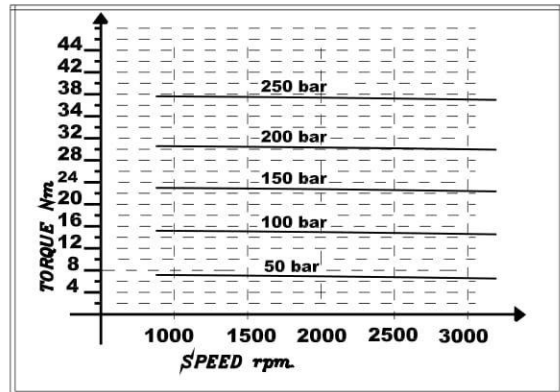
**MOTORS OT200 M06**



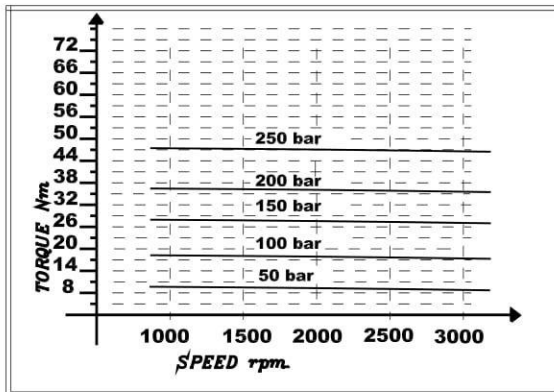
**MOTORS OT200 M08**



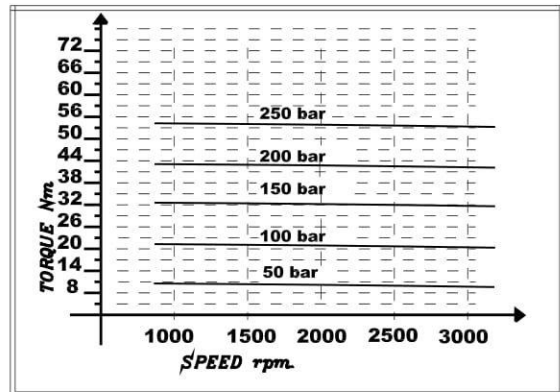
**MOTORS OT200 M11.2**



**MOTORS OT200 M14**

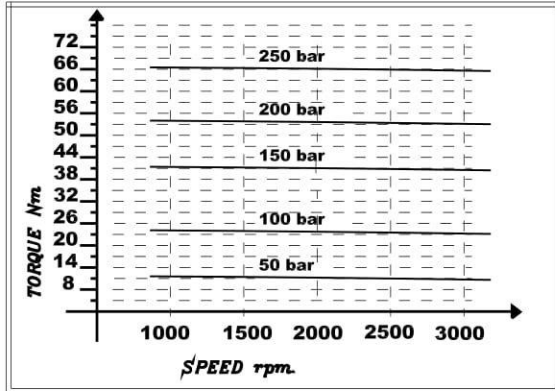


**MOTORS OT200 M16**

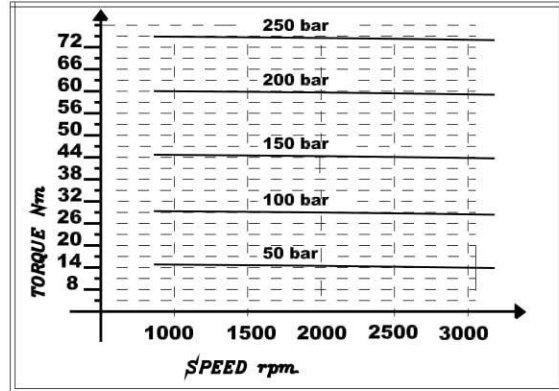


## GROUP2 MOTORS - TORQUE CHARACTERISTICS CURVE

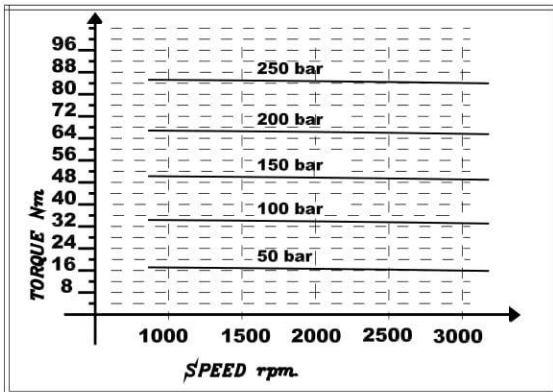
**MOTORS OT200 M20**



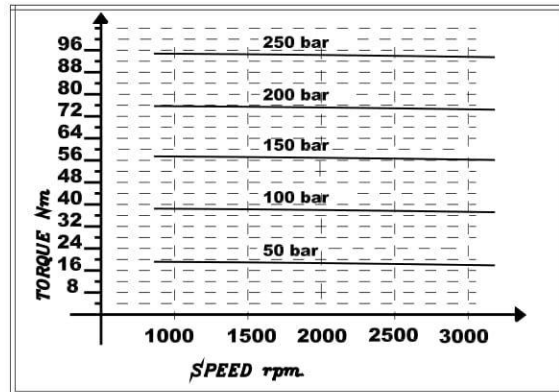
**MOTORS OT200 M22**



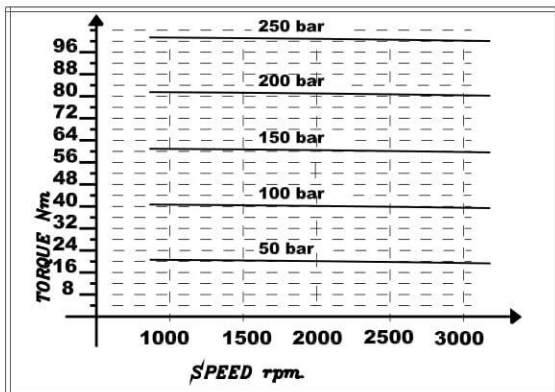
**MOTORS OT200 M25**



**MOTORS OT200 M28**

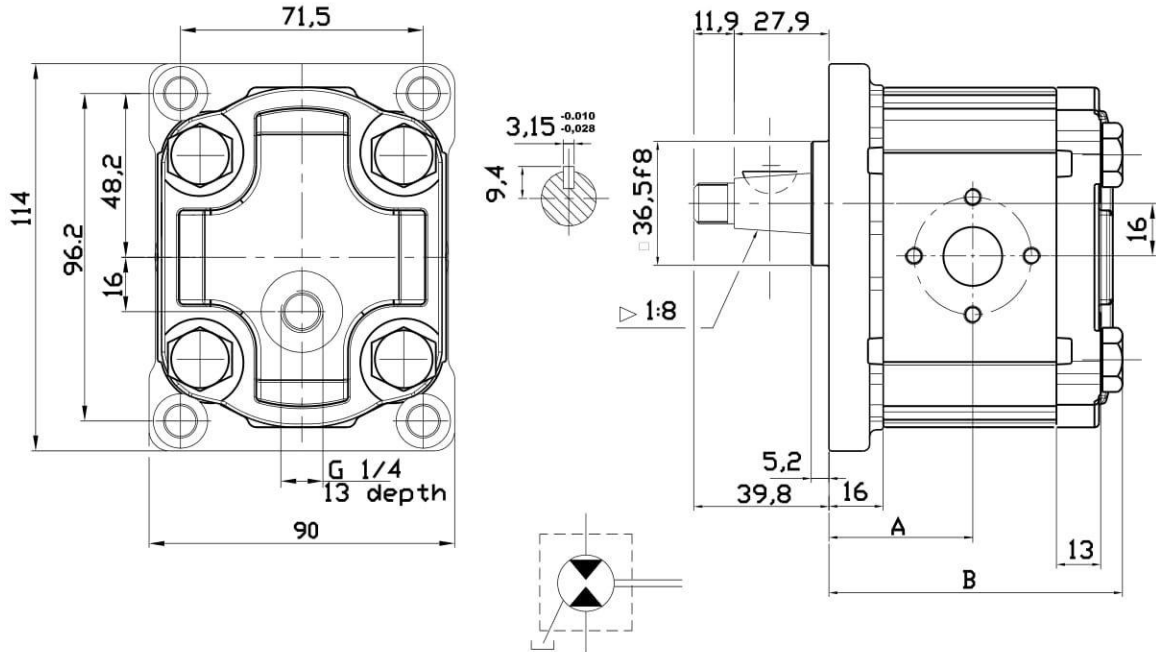


**MOTORS OT200 M30**

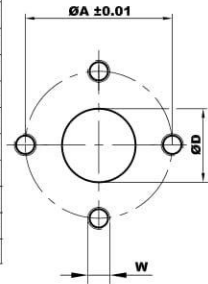


## GROUP2 REVERSIBLE MOTORS - EUROPEAN STANDARD

**VERSION: P28 P2**

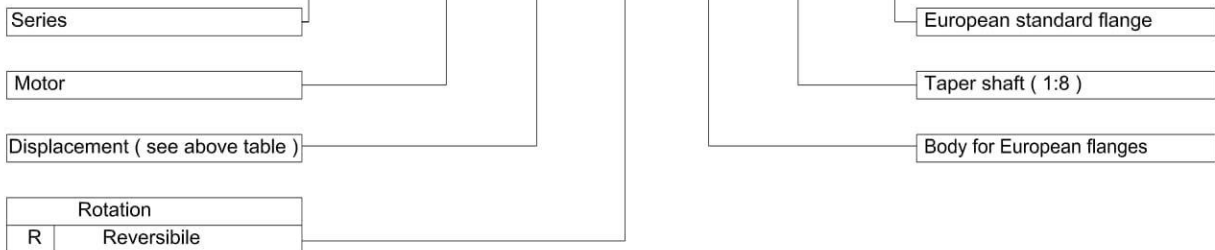


Type	Displacement (cc/rev)	Max working pressure P1 (bar)	Peak pressure P3 (bar)	Max speed (r.p.m)	Dimension		Inlet port			Outlet port		
					A	B	ØD	ØA	W	ØD	ØA	W
OT 200 P04	04,10	210	240	4000	40,00	83,50	13	30	M6	13	30	M6
OT 200 P06	06,20	220	255	3500	41,50	86,50	13	30	M6	13	30	M6
OT 200 P08	08,20	220	255	3500	43,00	89,50	13	30	M6	13	30	M6
OT 200 P11	11,20	220	255	3500	45,15	93,80	13	30	M6	13	30	M6
OT 200 P14	14,00	220	255	3000	47,15	97,80	20	40	M8	20	40	M8
OT 200 P16	16,00	220	255	3000	48,60	100,7	20	40	M8	20	40	M8
OT 200 P20	20,00	200	240	3000	51,50	106,5	20	40	M8	20	40	M8
OT 200 P22	22,50	170	210	2500	57,35	118,2	20	40	M8	20	40	M8
OT 200 P25	25,10	170	180	2500	59,25	122,0	20	40	M8	20	40	M8
OT 200 P28	28,00	140	180	2500	61,35	126,2	20	40	M8	20	40	M8
OT 200 P30	30,00	130	170	2000	62,75	129,0	20	40	M8	20	40	M8



### EXAMPLE OF ORDERING CODE

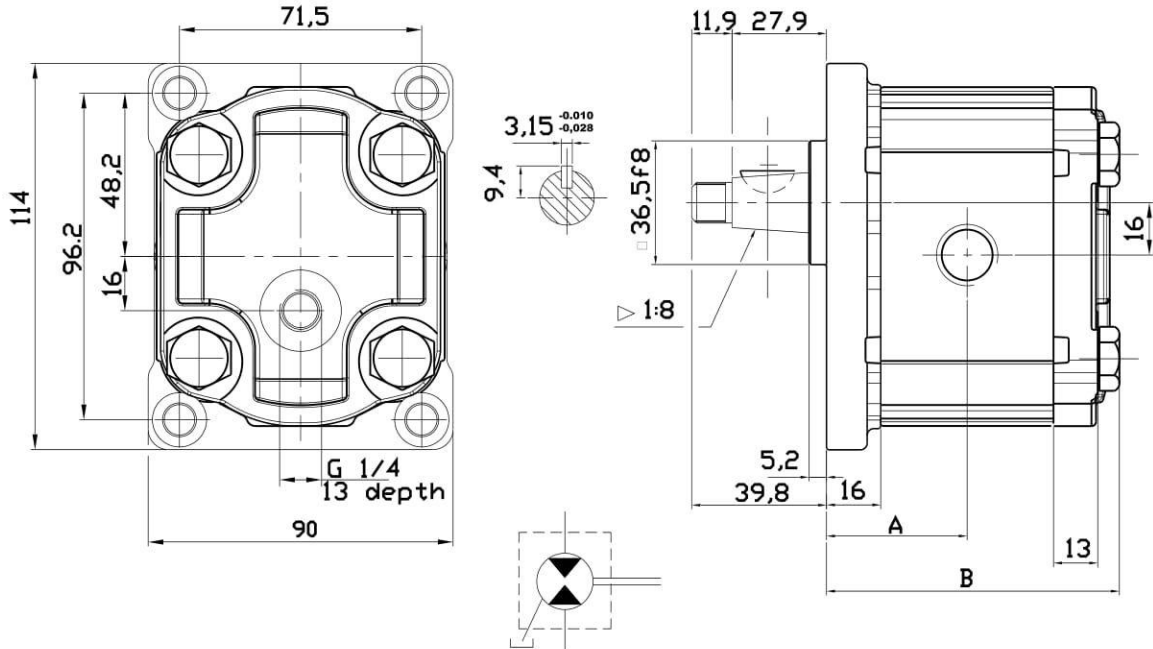
**OT200 M 08 R / P 28 P2**



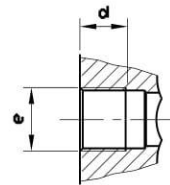
Consult our technical department.

## GROUP2 REVERSIBLE MOTORS - EUROPEAN STANDARD

**VERSION: G28 P2**

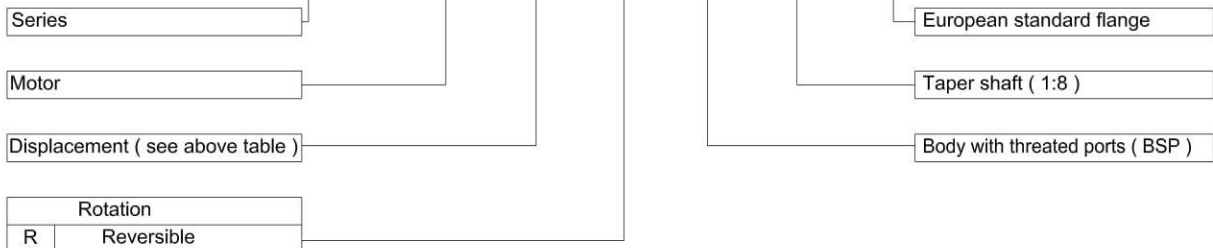


Type	Displacement (cc/rev)	Max working pressure P1 (bar)	Peak pressure P3 (bar)	Max speed (r.p.m)	Dimension		Inlet port		Outlet port	
					A	B	e	d	e	d
OT 200 P04	04,10	210	240	4000	40,00	83,50	G1/2	14	G1/2	14
OT 200 P06	06,20	220	255	3500	41,50	86,50	G1/2	14	G1/2	14
OT 200 P08	08,20	220	255	3500	43,00	89,50	G1/2	14	G1/2	14
OT 200 P11	11,20	220	255	3500	45,15	93,80	G1/2	14	G1/2	14
OT 200 P14	14,00	220	255	3000	47,15	97,80	G3/4	16	G3/4	16
OT 200 P16	16,00	220	255	3000	48,60	100,7	G3/4	16	G3/4	16
OT 200 P20	20,00	200	240	3000	51,50	106,5	G3/4	16	G3/4	16
OT 200 P22	22,50	170	210	2500	57,35	118,2	G3/4	16	G3/4	16
OT 200 P25	25,10	170	180	2500	59,25	122,0	G3/4	16	G3/4	16
OT 200 P28	28,00	140	180	2500	61,35	126,2	G3/4	16	G3/4	16
OT 200 P30	30,00	130	170	2000	62,75	129,0	G3/4	16	G3/4	16



### EXAMPLE OF ORDERING CODE

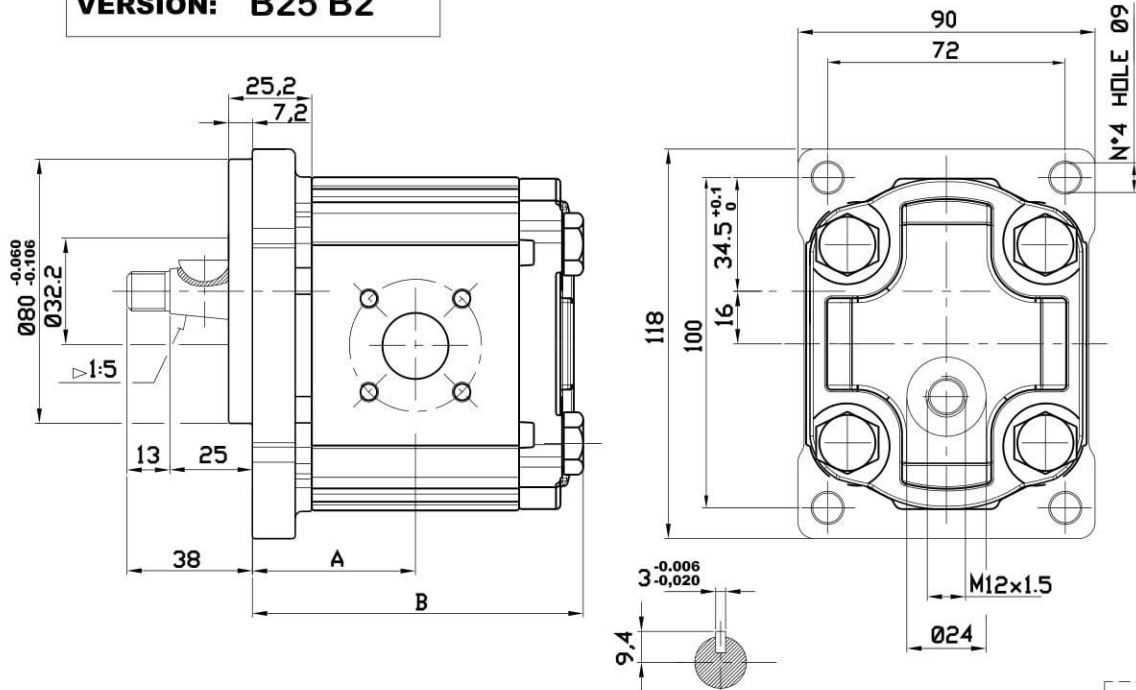
**OT200 M 08 R / G 28 P2**



Consult our technical department.

## GROUP2 REVERSIBLE MOTORS - GERMAN STANDARD

**VERSION: B25 B2**

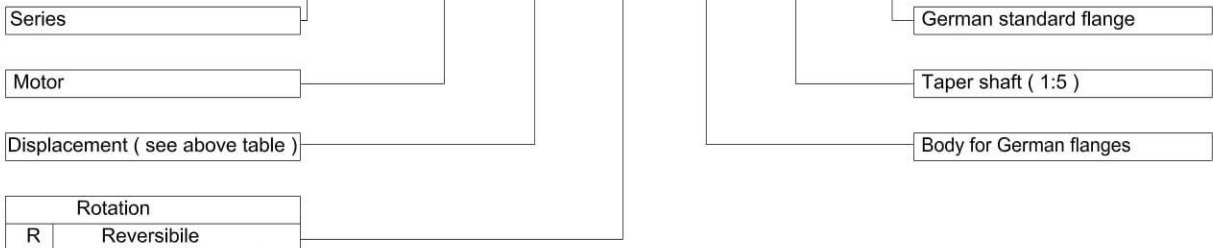


Type	Displacement (cc/rev)	Max working pressure P1 (bar)	Peak pressure P3 (bar)	Max speed (r.p.m)	Dimension		Inlet port			Outlet port		
					A	B	ØD	ØA	W	ØD	ØA	W
OT 200 P04	04,10	210	240	4000	42,00	85,50	15	35	M6	15	35	M6
OT 200 P06	06,20	220	255	3500	43,50	88,50	15	35	M6	15	35	M6
OT 200 P08	08,20	220	255	3500	45,00	91,50	15	35	M6	15	35	M6
OT 200 P11	11,20	220	255	3500	47,15	95,80	15	35	M6	15	35	M6
OT 200 P14	14,00	220	255	3000	49,15	99,80	15	35	M6	15	35	M6
OT 200 P16	16,00	220	255	3000	50,60	102,7	20	40	M6	20	40	M6
OT 200 P20	20,00	200	240	3000	53,50	108,5	20	40	M6	20	40	M6
OT 200 P22	22,50	170	210	2500	59,35	120,2	20	40	M6	20	40	M6
OT 200 P25	25,10	170	180	2500	61,25	124,0	20	40	M6	20	40	M6
OT 200 P28	28,00	140	180	2500	63,35	128,2	20	40	M6	20	40	M6
OT 200 P30	30,00	130	170	2000	64,75	131,0	20	40	M6	20	40	M6



### EXAMPLE OF ORDERING CODE

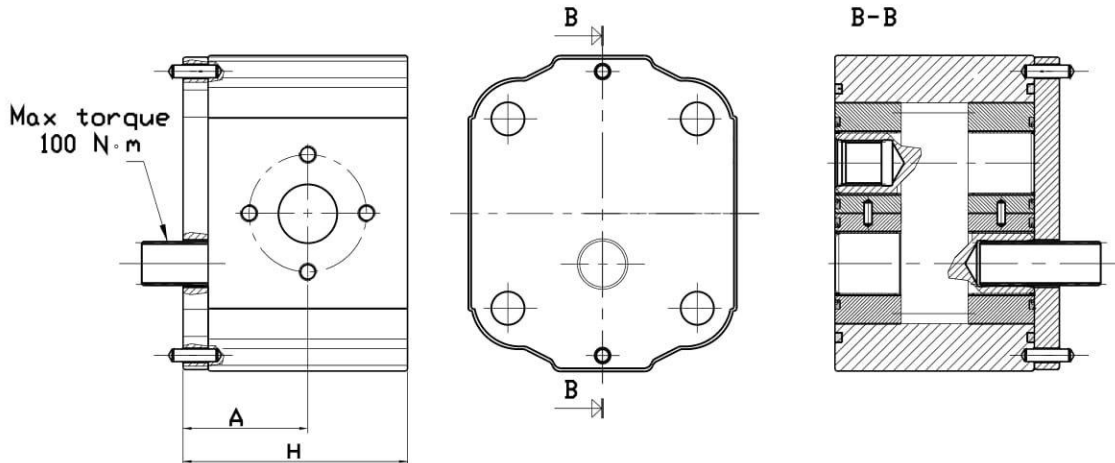
**OT200 M 08 R / B 25 B2**



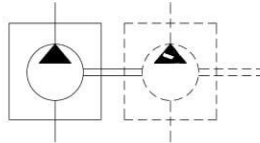
Consult our technical department.

# INTERMEDIATE GROUP 2 PUMPS FOR TANDEM UNITS

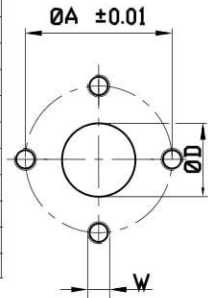
**VERSION : P X X INTERMEDIATE**



NOTE : Screw tightening torque 48 N.m



Type	Displacement ( cc/rev )	Max working pressure P1 ( bar )	Peak pressure P3 ( bar )	Max speed ( r.p.m )	Dimension		Inlet port			Outlet port		
					H	A	ØD	ØA	W	ØD	ØA	W
OT 200 P04	04,10	250	300	4000	55.50	31.50	13	30	M6	13	30	M6
OT 200 P06	06,20	250	300	3500	58.50	33.00	13	30	M6	13	30	M6
OT 200 P08	08,20	250	300	3500	61.50	34.50	13	30	M6	13	30	M6
OT 200 P11	11,20	250	300	3500	65.80	36.65	13	30	M6	13	30	M6
OT 200 P14	14,00	240	300	3000	69.80	36.65	20	40	M8	13	30	M6
OT 200 P16	16,00	240	300	3000	72.70	40.10	20	40	M8	13	30	M6
OT 200 P20	20,00	200	240	3000	78.50	43.00	20	40	M8	13	30	M6
OT 200 P22	22,50	170	210	2500	90.20	48.85	20	40	M8	13	30	M6
OT 200 P25	25,10	170	210	2500	94.00	50.75	20	40	M8	13	30	M6
OT 200 P28	28,00	140	180	2500	98.20	52.85	20	40	M8	13	30	M6
OT 200 P30	30,00	130	170	2000	101.00	54.25	20	40	M8	13	30	M6



## EXAMPLE OF ORDERING CODE

**OT200 P 08 S / P X X INTERMEDIATE**

Series

Pump

Displacement ( see above table )

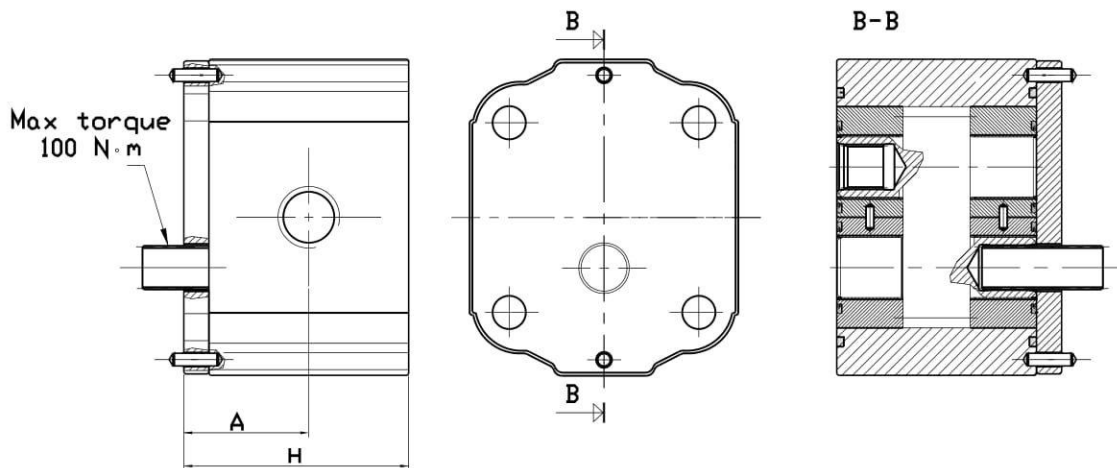
Rotation

S	Anti-clockwise
D	Clockwise

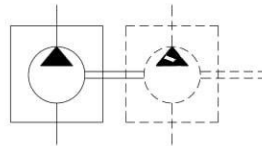
Body for European flanges

# INTERMEDIATE GROUP 2 PUMPS FOR TANDEM UNITS

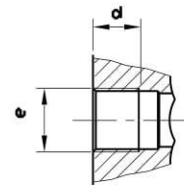
**VERSION : G X X INTERMEDIATE**



NOTE : Screw tightening torque 48 N.m

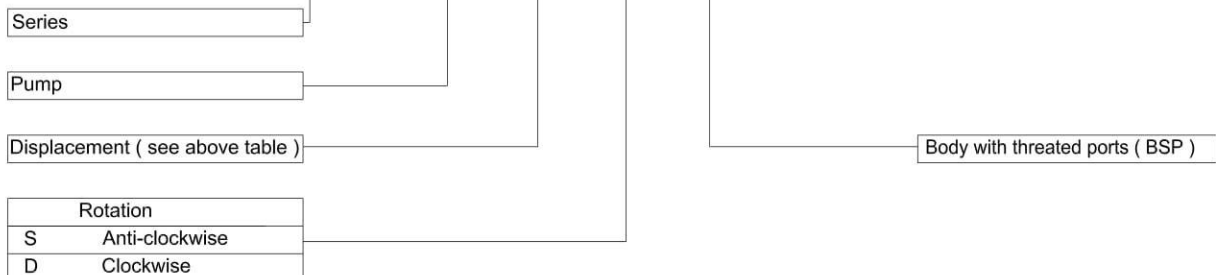


Type	Displacement ( cc/rev )	Max working pressure P1 ( bar )	Peak pressure P3 ( bar )	Max speed ( r.p.m )	Dimension		Inlet port		Outlet port	
					H	A	e	d	e	d
OT 200 P04	04,10	250	300	4000	55.50	31.50	G1/2	14	G1/2	14
OT 200 P06	06,20	250	300	3500	58.50	33.00	G1/2	14	G1/2	14
OT 200 P08	08,20	250	300	3500	61.50	34.50	G1/2	14	G1/2	14
OT 200 P11	11,20	250	300	3500	65.80	36.65	G1/2	14	G1/2	14
OT 200 P14	14,00	240	300	3000	69.80	36.65	G3/4	16	G3/4	16
OT 200 P16	16,00	240	300	3000	72.70	40.10	G3/4	16	G3/4	16
OT 200 P20	20,00	200	240	3000	78.50	43.00	G3/4	16	G3/4	16
OT 200 P22	22,50	170	210	2500	90.20	48.85	G3/4	16	G3/4	16
OT 200 P25	25,10	170	210	2500	94.00	50.75	G3/4	16	G3/4	16
OT 200 P28	28,00	140	180	2500	98.20	52.85	G3/4	16	G3/4	16
OT 200 P30	30,00	130	170	2000	101.00	54.25	G3/4	16	G3/4	16



## EXAMPLE OF ORDERING CODE

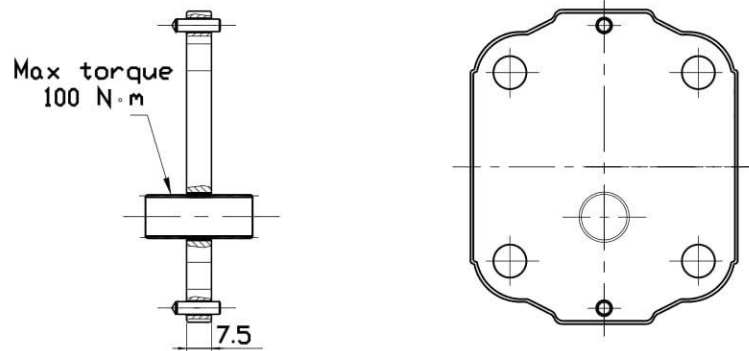
**OT200 P 08 S / G X X INTERMEDIATE**





## COMPONENTS FOR GROUP2 TANDEM PUMPS

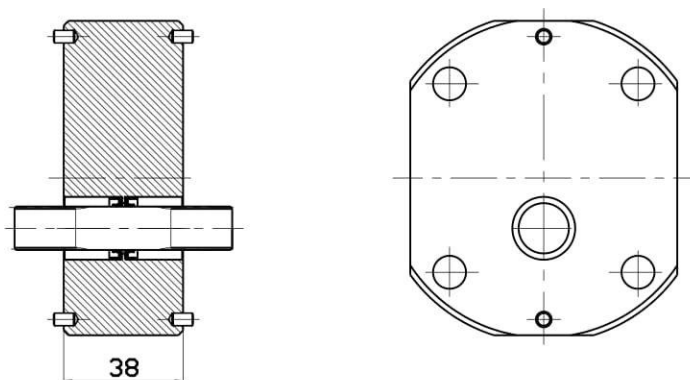
### OT 200+OT200 MOUNTING KIT



NOTE : Screw tightening torque 48 N·m

**ORDERING CODE: PS20370001**

### OT200+OT200 MOUNTING KIT FOR SEPARATE UNITS

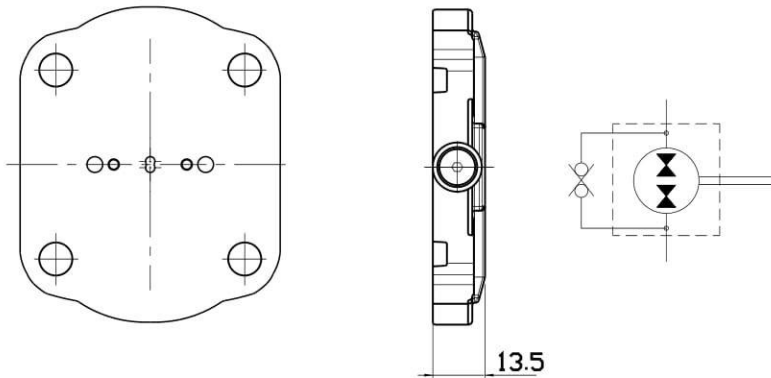


NOTE : Screw tightening torque 48 N·m

**ORDERING CODE: PS20370050**

## REAR COVERS FOR GROUP2 PUMPS AND MOTORS

### INTERNAL DRAIN REAR COVER FOR PUMPS AND MOTORS



NOTE : Max back pressure 5 - 7 [ bar ]

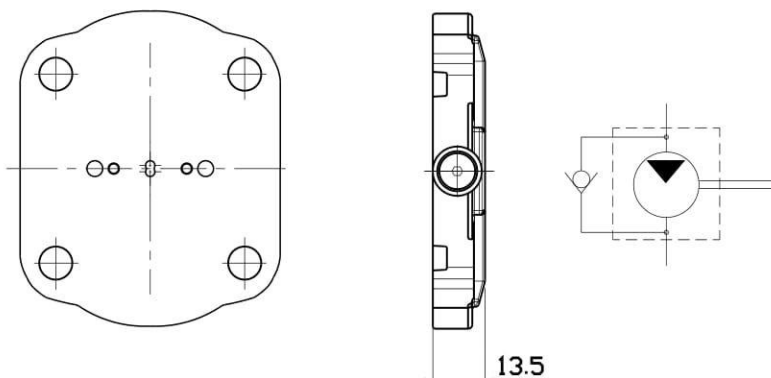
### EXAMPLE OF ORDERING CODE

**OT200 M 08 R / G 28 P2 - DI**

See correspondent reversible motors and pumps tables

Cover for INTERNAL DRAIN

### REAR COVER WITH ANTICAVITATION VALVE



NOTE : Max back pressure 5 - 7 [ bar ]

### EXAMPLE OF ORDERING CODE

**OT200 M 08 D / G 28 P2 - VA**

See correspondent UNIDIRECTIONAL motor tables

Rear cover with ANTICAVITATION VALVE