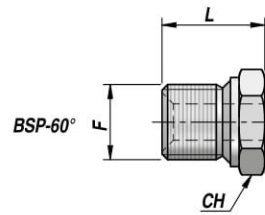


RV501

RV502

NEW!

**UNION MALE A SOUDER A 6 PANS
WELDABLE MALE**



Code Code	F BSP	CH	L	kg x100
RV501.0400	1/4"	19	18~	2,00
RV501.0600	3/8"	22	20~	3,60
RV501.0800	1/2"	27	23~	5,00
RV501.1200	3/4"	32	26~	7,60
RV501.1600	1"	41	30~	15,40
RV501.2000	1"1/4	50	32~	26,60

Code Code	F	CH	L	kg x100
RV502.1415	M14x1.5	19	19~	2,20
RV502.1615	M16x1.5	22	21~	2,60
RV502.1815	M18x1.5	24	22~	4,40
RV502.2215	M22x1.5	27	24~	5,80

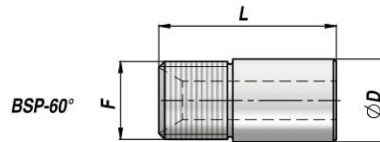
MATERIEL : ACIER
MATERIAL : STEEL

RV511

RV512

NEW!

**UNION MALE A SOUDER
WELDABLE MALE**



Code Code	F BSP	ØD	L	kg x100
RV511.0400	1/4"	15	25~	2,00
RV511.0600	3/8"	17	35~	3,80
RV511.0800	1/2"	21	35~	5,60
RV511.1200	3/4"	28	41~	9,40
RV511.1600	1"	35	41~	15,20
RV511.2000	1"1/4	43	45~	26,30

Code Code	F	ØD	L	kg x100
RV512.1415	M14x1.5	14	30~	2,00
RV512.1615	M16x1.5	16	31~	3,00
RV512.1815	M18x1.5	18	35~	4,00
RV512.2215	M22x1.5	21	37~	5,50

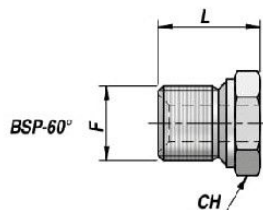
MATERIEL : ACIER
MATERIAL : STEEL

RV501

RV502

NEW!

UNION MALE A SOUDER A 6 PANS
WELDABLE MALE



Code Code	F BSP	CH	L	kg x100
RV501.0400	1/4"	19	18~	2,00
RV501.0600	3/8"	22	20~	3,60
RV501.0800	1/2"	27	23~	5,00
RV501.1200	3/4"	32	26~	7,60
RV501.1600	1"	41	30~	15,40
RV501.2000	1 1/4"	50	32~	26,60

Code Code	F	CH	L	kg x100
RV502.1415	M14x1.5	19	19~	2,20
RV502.1615	M16x1.5	22	21~	2,60
RV502.1815	M18x1.5	24	22~	4,40
RV502.2215	M22x1.5	27	24~	5,80

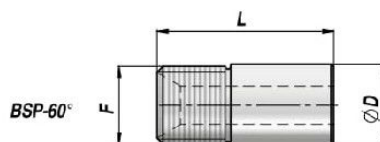
MATERIEL : ACIER
MATERIAL : STEEL

RV511

RV512

NEW!

UNION MALE A SOUDER
WELDABLE MALE



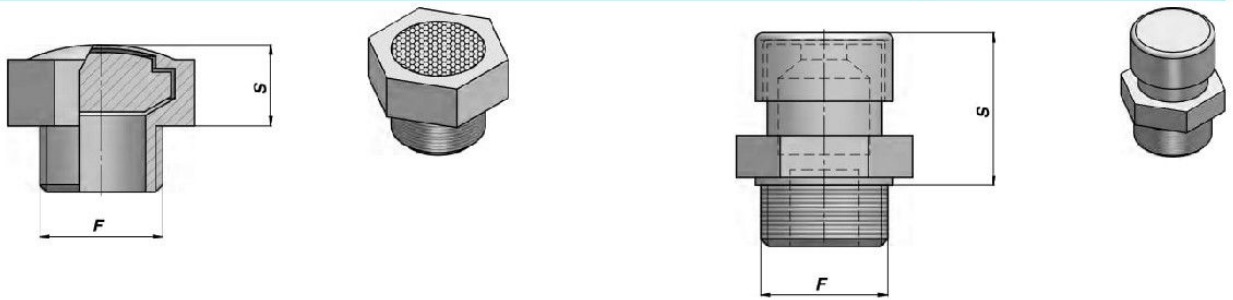
Code Code	F BSP	ØD	L	kg x100
RV511.0400	1/4"	15	25~	2,00
RV511.0600	3/8"	17	35~	3,80
RV511.0800	1/2"	21	35~	5,60
RV511.1200	3/4"	28	41~	9,40
RV511.1600	1"	35	41~	15,20
RV511.2000	1 1/4"	43	45~	26,30

Code Code	F	ØD	L	kg x100
RV512.1415	M14x1.5	14	30~	2,00
RV512.1615	M16x1.5	16	31~	3,00
RV512.1815	M18x1.5	18	35~	4,00
RV512.2215	M22x1.5	21	37~	5,50

MATERIEL : ACIER
MATERIAL : STEEL

RENIFLARD
AIR PLUG

ASEP/ATS



Code Code	F BSP	S	kg x100
ASEP030000	1/8"	7	1,00
ASEP040000	1/4"	8	1,20
ASEP060000	3/8"	9	2,00
ASEP080000	1/2"	9	2,30
ASEP120000	3/4"	11	4,00
ASEP160000	1"	12	6,00

Code Code	F BSP	S	kg x100
ATS31A0030	1/8"	15	3,00
ATS31A0040	1/4"	20	4,00
ATS31A0060	3/8"	19	4,50
ATS31A0080	1/2"	19	6,00
ATS31A0120	3/4"	23	15,00
ATS31A0160	1"	30	24,00

MATERIEL CORPS : LAITON FILTRE : BRONZE SINTERISE
 BODY MATERIAL : BRASS FILTER : SINTERED BRONZE

MATERIEL CORPS : LAITON FILTRE : BRONZE SINTERISE PROTECTION: ACIER ZINGUE
 BODY MATERIAL : BRASS FILTER : SINTERED BRONZE CAP : ZINC PLATED STEEL

PROTECTION TARAUDAGES
CAP FOR THREADED HOLES

APG/APM



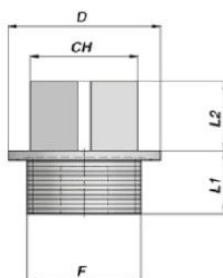
Code Code	F BSP	ØD	L
APG0300000	1/8"	9,0	7,5
APG0400000	1/4"	12,0	9,0
APG0600000	3/8"	15,5	9,5
APG0800000	1/2"	19,0	10,5
APG1200000	3/4"	25,0	12,0
APG1600000	1"	31,0	10,5
APG2000000	1"1/4	39,5	11,0
APG2400000	1"1/2	46,0	10,5
APG3200000	2"	57,5	13,5

Code Code	F	ØD	L
APM1215000	M12x1,5	10,5	8,0
APM1415000	M14x1,5	13,0	9,5
APM1615000	M16x1,5	15,0	9,5
APM1815000	M18x1,5	17,0	10,5
APM2015000	M20x1,5	19,0	10,5
APM2215000	M22x1,5	21,0	11,0

MATERIEL : POLYETHYLENE L.D.
 MATERIAL : POLYETHYLENE L.D.

APSEP435

PROTECTION TARAUDAGES
CAP FOR THREADED HOLES



Code Code	F BSP	D	L1	L2	CH
APSEP43516	1/8"	16.8	9	10	13
APSEP43519	1/4"	19.2	9	10	13
APSEP43522	3/8"	22.2	9	11	17
APSEP43527	1/2"	27.2	12	13	19
APSEP43532	3/4"	32.3	12	13	24
APSEP43540	1"	40.0	15	14	27
APSEP43550	1 1/4"	50.4	15	15	36
APSEP43555	1 1/2"	55.4	15	15	41
APSEP43568	2"	68.4	15	15	55

Code Code	F	D	L1	L2	CH
APSEP435M12	M12x1,5	17.2	10	10	13
APSEP435M14	M14x1,5	19.2	10	10	13
APSEP435M16	M16x1,5	22.0	10	10	17
APSEP435M18	M18x1,5	24.0	10	11	17
APSEP435M20	M20x1,5	26.0	10	14	19
APSEP435M22	M22x1,5	27.2	10	14	19

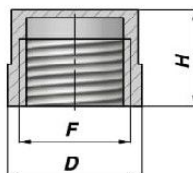
MATERIEL : POLIAMIDE PA 6

MATERIAL : POLYAMIDE PA 6

APSEP510

NEW!

PROTECTION TARAUDAGES
CAP FOR THREADED HOLES



Code Code	F BSP	ØD	H
APSEP510018001	1/8"	13.0	12.0
APSEP510014001	1/4"	16.0	13.0
APSEP510038001	3/8"	20.5	14.5
APSEP510012001	1/2"	24.5	15.5
APSEP510034001	3/4"	30.5	16.5
APSEP510100001	1"	40.0	19.5
APSEP510114001	1 1/4"	48.0	17.5
APSEP510112001	1 1/2"	56.0	18.0
APSEP510200001	2"	68.0	19.0

Code Code	F	ØD	H
APSEP510M01215	M12x1.5	10.5	14
APSEP510M01415	M14x1.5	18.5	14
APSEP510M01615	M16x1.5	20.5	14
APSEP510M01815	M18x1.5	22.0	15
APSEP510M02015	M20x1.5	24.5	16
APSEP510M02215	M22x1.5	26.5	16

MATERIEL : POLYETHYLENE

MATERIAL : POLYETHYLENE