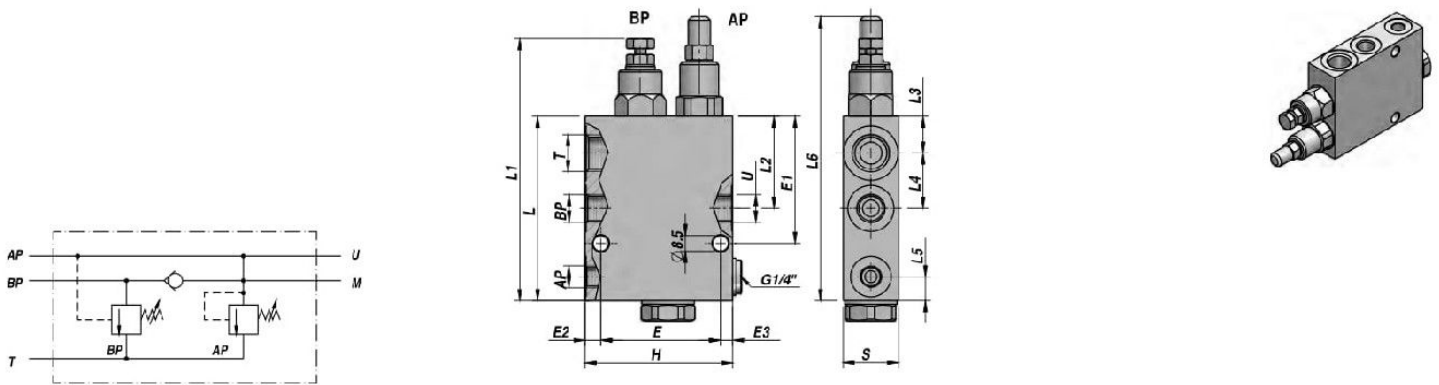


VALVE D'EXCLUSION HAUTE/BASSE PRESSION  
"HI-LOW" UNLOADING VALVE

VABP



Code Code	AP BSP	BP-U BSP	T BSP	Q MAX l/min	P MAX bar	Type Type	L	L1	L2	L3	L4	L5	L6	E	E1	E2	E3	H	S	kg
V1290.0512	1/4"	3/8"	1/2"	60	300	VABP 3/8"	100	142	50.0	20	30.0	13	155	65	69	8.5	6.5	80	30	1,75
V1290.0513	3/8"	1/2"	3/4"	80	350	VABP 1/2"	105	147	54.0	18	36.0	15	160	65	73	17.0	8.0	90	35	2,33
V1290.0514	1/2"	3/4"	1"	120	350	VABP 3/4"	140	187	52.5	20	42.5	20	212	65	95	27.0	8.0	100	40	3,97

RESSORT "BP" - "BP" SPRING : B= 20.80 bar ( Standard )  
 RESSORT "AP" - "AP" SPRING : D= 50.350 bar ( Standard )

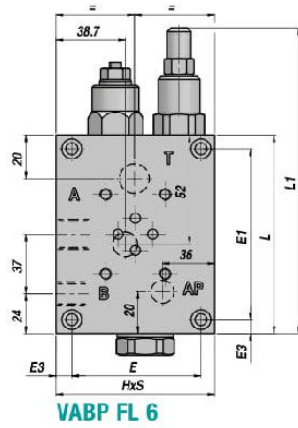
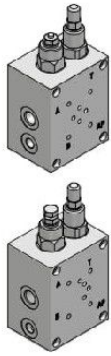
MATERIEL CORPS : ACIER MONTAGE EN LIGNE  
 BODY MATERIAL : STEEL LINE MOUNTING

# VALVES CONTROLE PRESSION - PRESSURE CONTROL VALVES

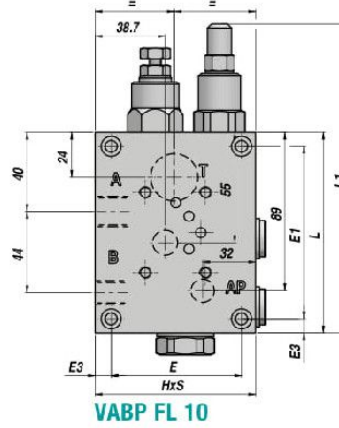
## VABP/FL

NEW!

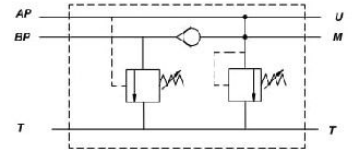
VALVE D'EXCLUSION HAUTE/BASSE PRESSION + EMBASE CETOP  
"HI-LOW" UNLOADING VALVE WITH CETOP SUB-PLATE



VABP FL 6



VABP FL 10



Code Code	A-B-T BSP	AP BSP	BP BSP	Q MAX l/min	P MAX bar	Type Type	L	L1	E	E1	E3	H	S	kg
V1290.0518	1/2"	1/4"	3/8"	60	350	VABP FL 6	100	154	76	86	7.0	90	60	3,85
V1290.0515	3/4"	3/8"	1/2"	80	350	VABP FL 10	114	168	73	97	8.5	90	90	6,34

RESSORT "BP" - "BP" SPRING: B= 20-80 bar ( Standard )  
RESSORT "AP" - "AP" SPRING: D= 50-350 bar ( Standard )

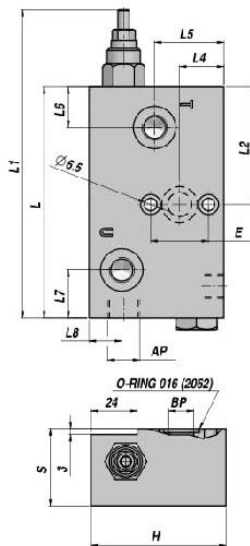
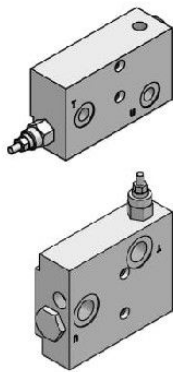
MATERIEL CORPS : ACIER  
BODY MATERIAL : STEEL

MONTAGE EN LIGNE  
LINE MOUNTING

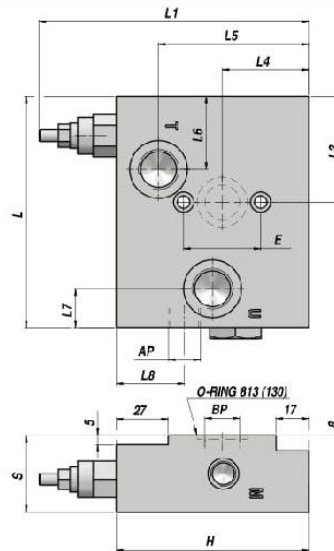
## VEP-FLP

NEW!

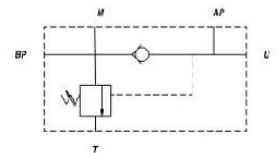
VALVE D'EXCLUSION BASSE PRESSION  
"LOW" UNLOADING VALVE



VEP FLP 1/2" - I30



VEP FLP 1/2" - I40



Code Code	AP BSP	BP	T-U BSP	Q MAX l/min	P MAX bar	Type Type	L	L1	L2	L4	L5	L6	E	L7	L8	H	S	kg
V1290.0517	3/8"	Ø 11	1/2"	60	320	VEP FLP 1/2"-I30	120	170	61	23	36	21	30	25	17	70	40	2,30
V1290.0521	3/8"	Ø 15	1/2"	60	320	VEP FLP 1/2"-I40	120	150	55	45	78	38	40	20	34	100	40	2,30

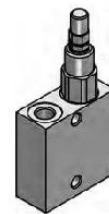
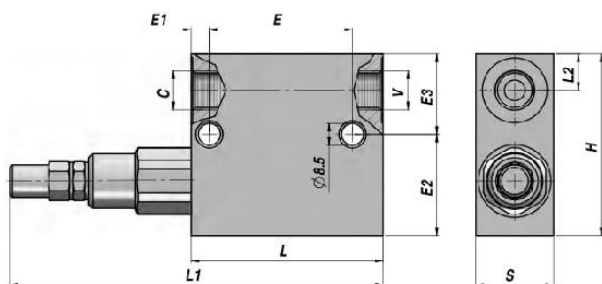
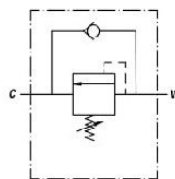
RESSORT "BP" - "BP" SPRING: B= 20-80 bar ( Standard )

MATERIEL CORPS : ACIER  
BODY MATERIAL : STEEL

FLASQUABLE  
FACE MOUNTING

VALVE DE SEQUENCE  
SEQUENCE VALVE

VS2C



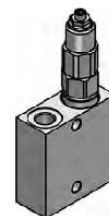
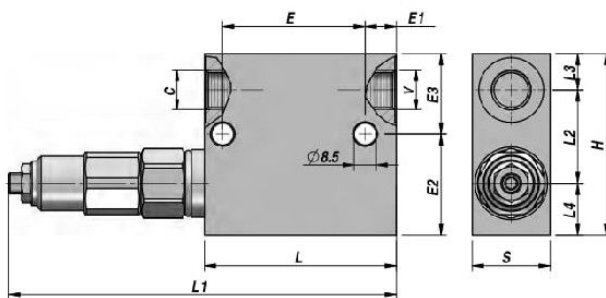
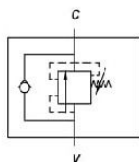
Code Code	C BSP	V BSP	Q MAX l/min	P MAX bar	Type Type	L	L1	L2	E	E1	E2	E3	H	S	kg
V1390.0640	3/8"	3/8"	35	350	VS2C 3/8" C	74	146	14	55	7	39	31	70	30	1,17
V1390.0660	1/2"	1/2"	70	350	VS2C 1/2" C	80	152	15	55	7	37	33	70	30	1,13
V1390.D665	3/4"	3/4"	110	400	VS2C 3/4" D	100	164	20	80	10	50	50	100	40	2,90

RESSORT - SPRING VS2C 3/8" - 1/2": A= 10:50 bar - B= 20:100 bar - C= 10:180 bar ( Standard ) - D= 50:250 bar - E= 80:300 bar  
 RESSORT - SPRING VS2C 3/4" : C= 20:200 bar - D= 50:400 bar ( Standard )

MATERIEL CORPS : ACIER MONTAGE EN LIGNE  
 BODY MATERIAL : STEEL LINE MOUNTING

VALVE DE SEQUENCE AVEC ANNULLATION PRESSION PRIMAIRE  
SEQUENCE VALVE WITH ZERO SETTING ON PRIMARY PRESSURE

VSQ-APP



Code Code	C BSP	V BSP	Q MAX l/min	P MAX bar	Type Type	L	L1	L2	L3	L4	E	E1	E2	E3	H	S	kg
V1390.0642	3/8"	3/8"	35	350	VSQAPP 3/8" C	74	149	36	14	20	55	12	39	31	70	30	1,25
V1390.0662	1/2"	1/2"	70	350	VSQAPP 1/2" C	80	155	36	15	19	55	18	37	33	70	30	1,28
V1390.0667	3/4"	3/4"	110	400	VSQAPP 3/4" Q	100	190	55	20	25	80	10	50	50	100	40	2,85

RESSORT - SPRING (3/8" - 1/2") : A= 10:50 bar - B= 20:100 bar - C= 10:180 bar ( Standard ) - D= 50:250 bar - E= 80:300 bar  
 RESSORT - SPRING (3/4") : N= 20:200 bar - Q= 50:400 bar ( Standard )

MATERIEL CORPS : ACIER MONTAGE EN LIGNE  
 BODY MATERIAL : STEEL LINE MOUNTING