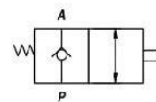
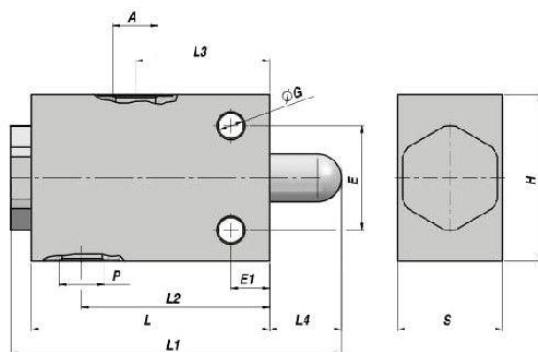
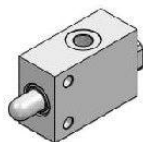


FCS-C

NEW!

VALVE FIN DE COURSE - NORMALEMENT FERMEE
END-STROKE VALVE - NORMALLY CLOSED



Code Code	A - P BSP	Q MAX l/min	P MAX bar	Type Type	L	L1	L2	L3	L4	ØG	E	E1	H	S	kg
VSG104.020000	3/8"	30	300	FCS-C 020	65	83	43	30	10	8.5	35	13.5	60	30	0,79
VSG104.030000	1/2"	60	300	FCS-C 030	80	103	51	37	13	10.5	40	13.5	75	35	1,28

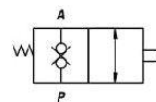
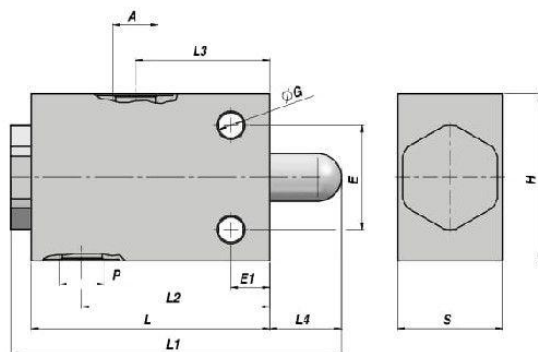
MATERIEL CORPS : ACIER
BODY MATERIAL : STEEL

MONTAGE EN LIGNE
LINE MOUNTING

FC-C

NEW!


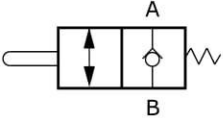
VALVE FIN DE COURSE ANTI-RETOUR DOUBLE - NORMALEMENT FERMEE
END-STROKE VALVE - DOUBLE LOCK - NORMALLY CLOSED



Code Code	A - P BSP	Q MAX l/min	P MAX bar	Type Type	L	L1	L2	L3	L4	ØG	E	E1	H	S	kg
VSG105.020000	3/8"	30	300	FC-C 020	65	83	43	30	10	8.5	35	13.5	60	30	0,79
VSG105.030000	1/2"	60	300	FC-C 030	80	103	51	37	13	10.5	40	13.5	75	35	1,30

MATERIEL CORPS : ACIER
BODY MATERIAL : STEEL

MONTAGE EN LIGNE
LINE MOUNTING

SCHEDA - CARD	PRODOTTO - PRODUCT	SCHEMA - SCHEMA	FCS-C
O10/0			FINECORSO A PULSANTE NORMALMENTE CHIUSO END STROKE VALVE NORMALLY CLOSED

APPLICAZIONE

Valvola utilizzata per aprire il passaggio di olio in un circuito idraulico attraverso un comando meccanico. Sono impiegate per azionare la sequenza di due attuatori o come valvola di fine corsa con flusso collegato a scarico.

MONTAGGIO

Collegare la bocca B all'alimentazione e la bocca A a scarico.

FUNZIONAMENTO

Una volta azionato meccanicamente il cursore si ha libero passaggio dell'olio da B verso A. Collegare A al secondo attuatore da comandare o direttamente a scarico.

A RICHIESTA

Dimensioni speciali - Marcatura personalizzabile.

NOTE COSTRUTTIVE

Corpo in acciaio zincato - Componenti in acciaio trattati termicamente - Non ammette trafilementi.

APPLICATION

This pushbutton valve allows oil passage in a hydraulic circuit by means of a slider. Used to set the sequence of two actuators or as an end stroke valve with flow to tank.

INSTALLATION

Connect port B to the inlet flow and A to tank.

OPERATION

Once the slider is set into action oil flow is free from B towards A. Connect A to the second actuator to operate or directly to tank.

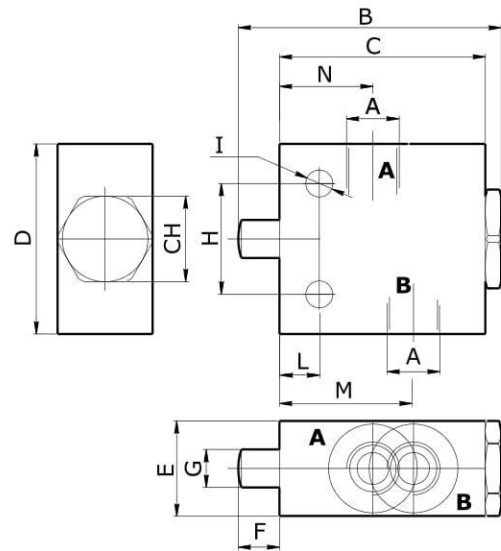
OPTIONAL

Special dimensions - Custom marking.

FEATURES

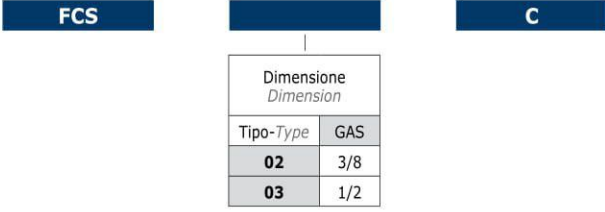
Steel body - Zinc plated - Hardened internal components - No leakage.

CARATTERISTICHE - HYDRAULIC FEATURES		
Dimensione <i>Dimension</i>	02	03
Pressione max <i>Max Pressure (bar)</i>	300	300
Portata max <i>Max Flow (l/min)</i>	30	60
Corsa max <i>Max Stroke (mm)</i>	10	12
Spinta molla <i>Spring bias (N)</i>	20	20




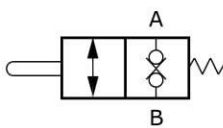
DIMENSIONI E PESI - EXTERNAL DIMENSIONS AND WEIGHTS														
Dimensione <i>Dimension</i>	A	B	C	D	E	F	G	H	I	L	M	N	CH	Peso <i>Weight (kg)</i>
02	3/8	83	65	60	30	10	8	35	8.5	13.5	43	30	27	0.79
03	1/2	103	80	75	35	13	12	40	10.5	13.5	51	37	32	1.28

CODICE ORDINAZIONE - ORDERING CODE



ESEMPIO ORDINAZIONE - ORDERING CODE EXAMPLE

FCS 02 C	FCS - Dimensione 02 - Filetto 3/8 GAS / FCS - 02 Dimension - 3/8 GAS Port thread
-----------------	--

SCHEDA - CARD	PRODOTTO - PRODUCT	SCHEMA - SCHEMA	FC-C
020/0			<p>FINECORSA A PULSANTE DOPPIO RITEGNO NORMALMENTE CHIUSO <i>END STROKE VALVE, DOUBLE LOCK NORMALLY CLOSED</i></p>

APPLICAZIONE

Valvola utilizzata per aprire il passaggio di olio in un circuito idraulico attraverso un comando meccanico (Flusso bloccato in entrambe le direzioni). Sono impiegate per azionare la sequenza di due attuatori o come valvola di fine corsa con flusso collegato a scarico.

MONTAGGIO

Collegare la bocca B all'alimentazione e la bocca A a scarico.

FUNZIONAMENTO

Una volta azionato meccanicamente il cursore si ha libero passaggio dell'olio da B verso A e da A verso B. Collegare indifferentemente A o B al secondo attuttore da comandare o direttamente a scarico.

A RICHIESTA

Dimensioni speciali - Marcatura personalizzabile.

NOTE COSTRUTTIVE

Corpo in acciaio zincato - Componenti in acciaio trattati termicamente - Non ammette trafileamenti.

APPLICATION

This pushbutton valve allows oil passage in a hydraulic circuit by means of a slider (Flow is blocked in both directions). Used to set the sequence of two actuators or as an end stroke valve with flow to tank.

INSTALLATION

Connect port B to the inlet flow and A to tank.

OPERATION

Once the slider is set into action oil flow is free from B towards A and vice-versa. Connect A or B to the second actuator to operate or directly to tank.

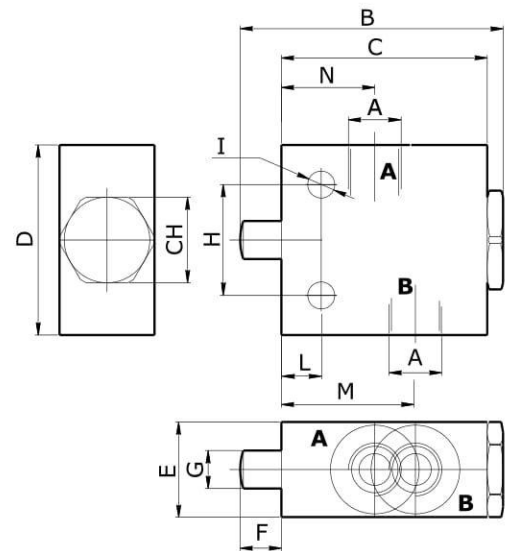
OPTIONAL

Special dimensions - Custom marking.

FEATURES

Steel body - Zinc plated - Hardened internal components - No leakage.

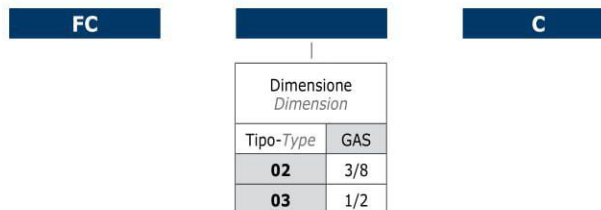
CARATTERISTICHE - HYDRAULIC FEATURES		
Dimensione <i>Dimension</i>	02	03
Pressione max <i>Max Pressure (bar)</i>	300	300
Portata max <i>Max Flow (l/min)</i>	30	60
Corsa max <i>Max Stroke (mm)</i>	10	12
Spinta molla <i>Spring bias (N)</i>	20	20



DIMENSIONI E PESI - EXTERNAL DIMENSIONS AND WEIGHTS

Dimensione <i>Dimension</i>	A	B	C	D	E	F	G	H	I	L	M	N	CH	Peso <i>Weight (kg)</i>
02	3/8	83	65	60	30	10	12	35	8.5	13.5	43	30	27	0.79
03	1/2	103	80	75	35	13	16	40	10.5	13.5	51	37	32	1.30

CODICE ORDINAZIONE - ORDERING CODE



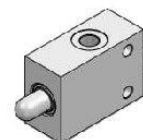
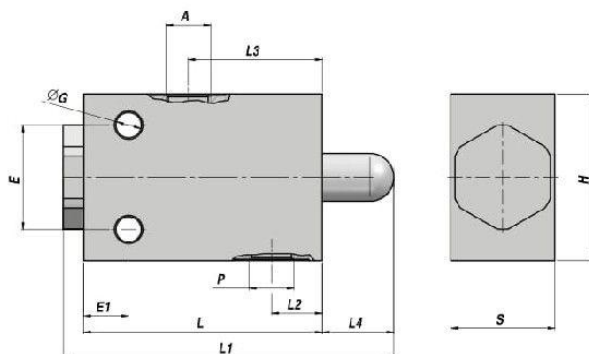
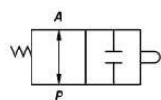
ESEMPIO ORDINAZIONE - ORDERING CODE EXAMPLE

FC 02 C	FC - Dimensione 02 - Filetto 3/8 GAS / FC - 02 Dimension - 3/8 GAS Port thread
----------------	--

VALVE FIN DE COURSE - NORMALEMENT OUVERTE
END-STROKE VALVE - NORMALLY OPEN

NEW!

FC-A



Code Code	A - P BSP	Q MAX l/min	P MAX bar	Type Type	L	L1	L2	L3	L4	ØG	E	E1	H	S	kg
VSG106.020000	3/8"	30	300	FC-A 020	65	81.5	17	28	12	8.5	40	15	60	30	0,80
VSG106.030000	1/2"	60	300	FC-A 030	65	81.5	17	28	12	8.5	40	15	60	30	0,80

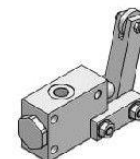
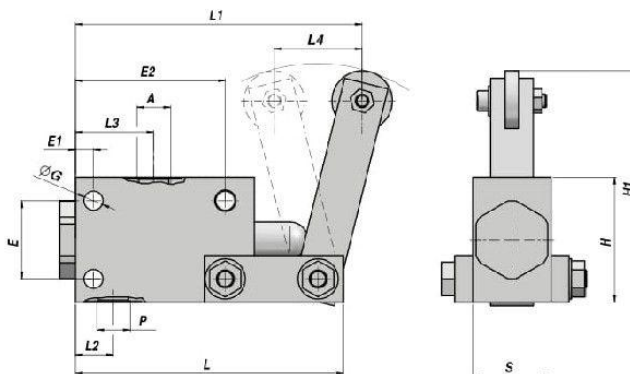
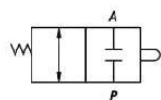
MATERIEL CORPS : ACIER
 BODY MATERIAL : STEEL

MONTAGE EN LIGNE
 LINE MOUNTING

VALVE FIN DE COURSE CONTACT MECANIQUE - NORMALEMENT FERMEE
MECHANICAL DRIVE END-STROKE VALVE - NORMALLY CLOSED

NEW!


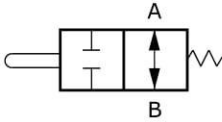
V-FCC.NC



Code Code	A - P BSP	Q MAX l/min	P MAX bar	Type Type	L	L1	L2	L3	L4	ØG	E	E1	E2	H1	H	S	kg
V7090.0815	1/2"	70	350	V-FCC 1/2"-NC	107	124.5	24.5	45	48	7	35	7	55	112.5	50	35	1,28

MATERIEL CORPS : ACIER
 BODY MATERIAL : STEEL

MONTAGE EN LIGNE
 LINE MOUNTING

SCHEDA - CARD	PRODOTTO - PRODUCT	SCHEMA - SCHEMA	FC-A
030/0			FINECORSA A PULSANTE NORMALMENTE APERTO END STROKE VALVE NORMALLY OPEN

APPLICAZIONE

Valvola utilizzata per chiudere il passaggio di olio in un circuito idraulico attraverso un comando meccanico (Flusso normalmente aperto in entrambe le direzioni).

MONTAGGIO

Collegare indifferentemente A o B al secondo attuatore da comandare o direttamente a scarico.

FUNZIONAMENTO

Una volta azionato meccanicamente il cursore si blocca il passaggio dell'olio da B verso A e da A verso B.

A RICHIESTA

Dimensioni speciali - Marcatura personalizzabile.

NOTE COSTRUTTIVE

Corpo in acciaio zincato - Componenti in acciaio trattati termicamente - Non ammette trafilementi.

APPLICATION

This pushbutton valve closes oil passage in a hydraulic circuit by means of a slider (Flow is normally open in both directions).

INSTALLATION

Connect independently A or B to the distributor and to the circuit.

OPERATION

Once the slider is set into action oil flow is blocked from B towards A and vice-versa.

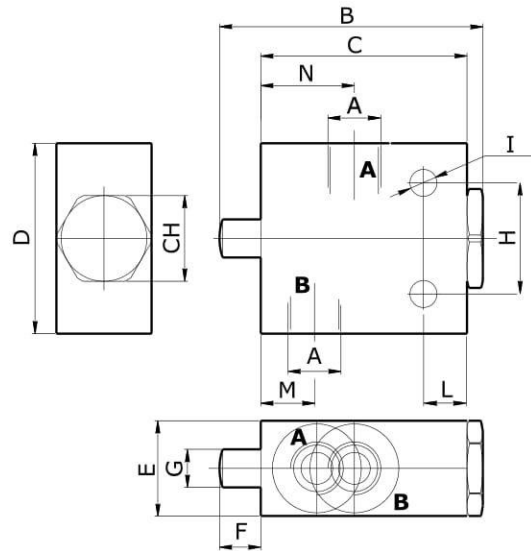
OPTIONAL

Special dimensions - Custom marking.

FEATURES

Steel body - Zinc plated - Hardened internal components - No leakage.

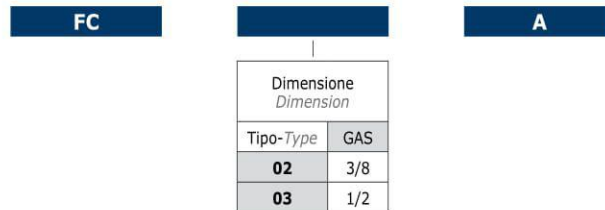
CARATTERISTICHE - HYDRAULIC FEATURES		
Dimensione Dimension	02	03
Pressione max Max Pressure (bar)	300	300
Portata max Max Flow (l/min)	30	60
Corsa max Max Stroke (mm)	12	12
Spinta molla Spring bias (N)	100	100



DIMENSIONI E PESI - EXTERNAL DIMENSIONS AND WEIGHTS

Dimensione Dimension	A	B	C	D	E	F	G	H	I	L	M	N	CH	Peso Weight (kg)
02	3/8	81.5	65	60	30	12	14	40	8.5	15	17	28	27	-
03	1/2	81.5	65	60	30	12	14	40	8.5	15	17	28	27	-

CODICE ORDINAZIONE - ORDERING CODE



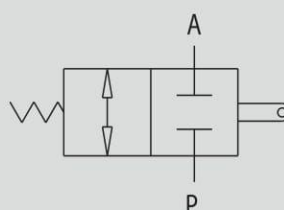
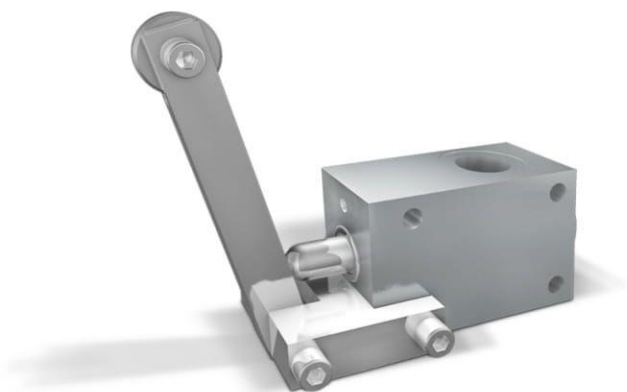
ESEMPIO ORDINAZIONE - ORDERING CODE EXAMPLE

FC 02 A	FC - Dimensione 02 - Filetto 3/8 GAS / FC - 02 Dimension - 3/8 GAS Port thread
----------------	--

FINECORSA CON CAMMA, NORMALMENTE CHIUSO

TIPO / TYPE
V-FCC NC

SCHEMA IDRAULICO
HYDRAULIC DIAGRAM



MECHANICAL DRIVE END STROKE VALVES, NORMALLY CLOSED

IMPIEGO:

Valvola utilizzata per aprire il passaggio di olio in un circuito idraulico (valvola normalmente chiusa). Una volta azionato meccanicamente il cursore, si ha il libero passaggio dell'olio da P a A. Può avere principalmente due impieghi:

- per azionare la sequenza di due attuatori;
- come valvola di fine corsa, con flusso direttamente collegato allo scarico.

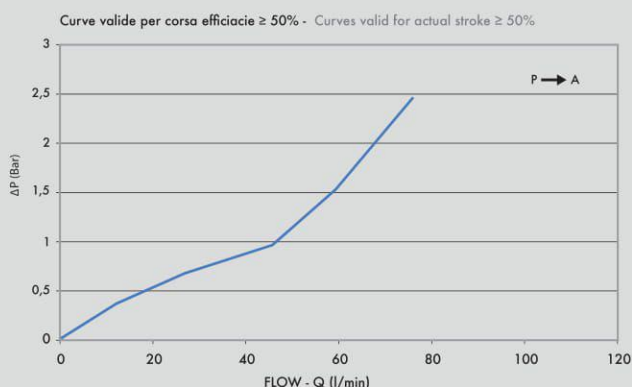
MATERIALI E CARATTERISTICHE:

Corpo: acciaio zincato
Componenti interni: acciaio temprato termicamente e rettificato
Guarnizioni: BUNA N standard
Tenuta: a sfera. Trafilamento nullo

MONTAGGIO:

Collegare P alla linea di utilizzo e A direttamente allo scarico. Lo schema di montaggio può variare in base al servizio richiesto.

PERDITE DI CARICO PRESSURE DROPS CURVE



USE AND OPERATION:

This valve allows oil passage in a hydraulic circuit (normally closed valve). Once the slider is set into action, oil flow is free from P to A. It can be used:

- to set the sequence of 2 actuators;
- as an end strokes valve, where flow is directly connected to the tank.

MATERIALS AND FEATURES:

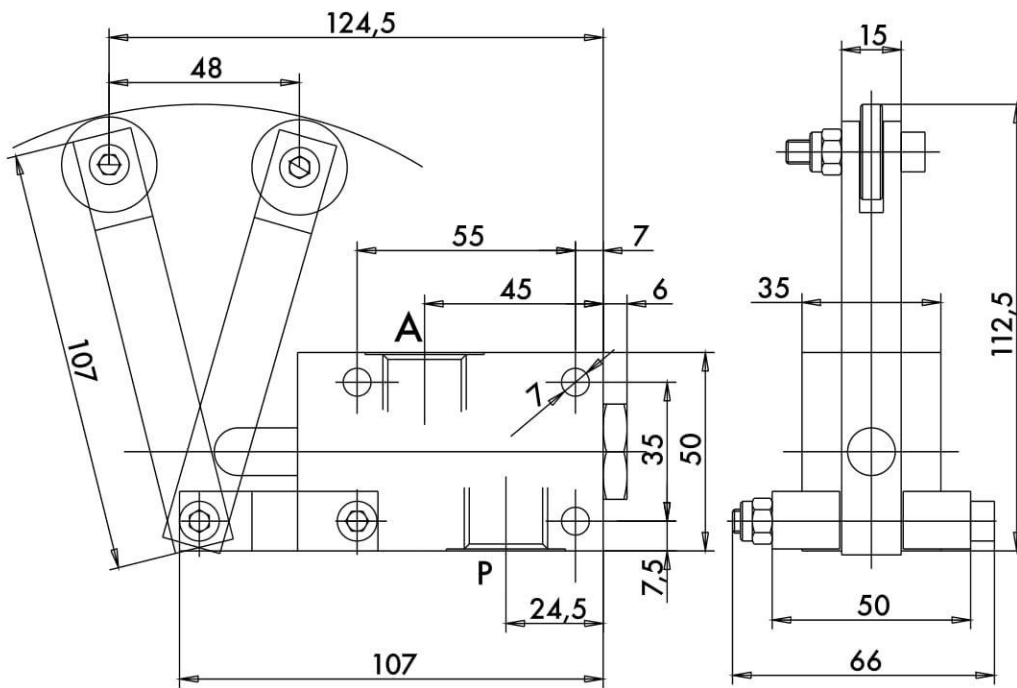
Body: zinc-plated steel
Internal parts: grounded and hardened steel
Seals: BUNA N standard
Ball type: any leakage

APPLICATIONS:

Connect A directly to the tank and P as for necessity. Mounting scheme can vary according to the use.

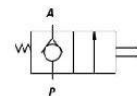
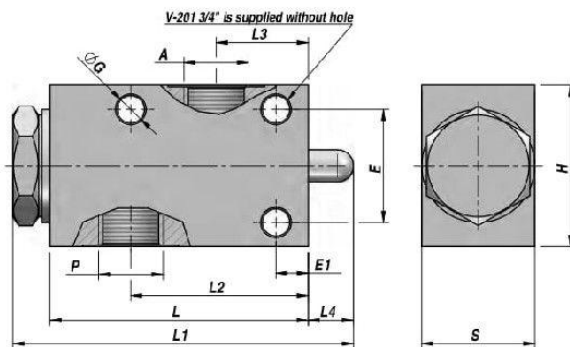
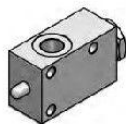
Temperatura olio: 50°C - Viscosità olio: 30 cSt
Oil temperature: 50° C - Oil viscosity: 30 cSt

CODICE CODE	SIGLA TYPE	PORTATA MAX MAX FLOW Lt. / min	PRESSIONE MAX MAX PRESSURE Bar
V0815	V - FCC 1/2" NC	70	350



FCV ... NC

VALVE FIN DE COURSE - NORMALEMENT FERMEE
END-STROKE VALVE - NORMALLY CLOSED



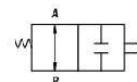
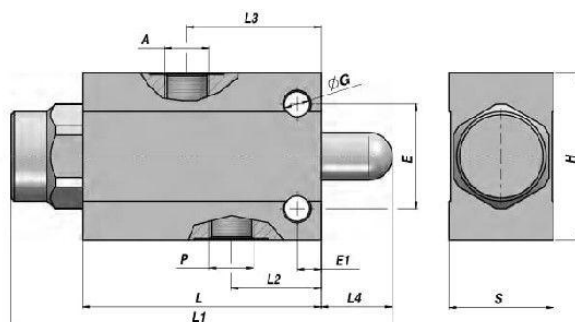
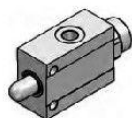
Code Code	A - P BSP	Q MAX l/min	P MAX bar	Type Type	L	L1	L2	L3	L4	ØG	E	E1	H	S	kg
V7015.0600	3/8"	50	350	FC V-101 NC	80	105	55	30.0	14	8.5	35	10	50	35	0,96
V7015.0800	1/2"	70	350	FC V-121 NC	80	105	55	28.5	14	8.5	35	10	50	35	0,93
V7015.1200	3/4"	100	350	FC V-201 NC	88	115	61	23.0	14	8.5	50	20	70	45	0,86

MATERIEL CORPS : ACIER
BODY MATERIAL : STEEL

MONTAGE EN LIGNE
LINE MOUNTING

FCV ... NA

VALVE FIN DE COURSE - NORMALEMENT OUVERTE
END-STROKE VALVE - NORMALLY OPEN



Code Code	A - P BSP	Q MAX l/min	P MAX bar	Type Type	L	L1	L2	L3	L4	ØG	E	E1	H	S	kg
V7090.0817	3/8"	40	350	FC V-101 NA	80	129	30	45	24	8.5	35	8	56	35	1,24
V7090.0818	1/2"	60	350	FC V-121 NA	80	129	30	45	24	8.5	35	8	62	35	1,38

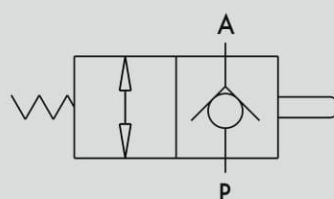
MATERIEL CORPS : ACIER
BODY MATERIAL : STEEL

MONTAGE EN LIGNE
LINE MOUNTING

FINECORSA A PULSANTE NORMALMENTE CHIUSO

TIPO / TYPE
VF-NC

SCHEMA IDRAULICO
HYDRAULIC DIAGRAM



Normalmente chiuso
Normally closed

PUSHBUTTON END STROKE VALVES, NORMALLY CLOSED

IMPIEGO:

Valvola utilizzata per aprire il passaggio di olio in un circuito idraulico (valvola normalmente chiusa). Una volta azionato meccanicamente il cursore, si ha il libero passaggio dell'olio da P a A. Può avere principalmente due impieghi:

- per azionare la sequenza di due attuatori;
- come valvola di fine corsa, con flusso direttamente collegato allo scarico.

MATERIALI E CARATTERISTICHE:

Corpo: acciaio zincato
Componenti interni: acciaio temprato termicamente e rettificato
Guarnizioni: BUNA N standard
Tenuta: a sfera. Trafilamento nullo
Corsa massima del cursore: 13 mm
Apertura immediata

MONTAGGIO:

Collegare P alla linea di utilizzo e A direttamente allo scarico. Lo schema di montaggio può variare in base al servizio richiesto.

USE AND OPERATION:

This valve allows oil passage in a hydraulic circuit (normally closed valve). Once the slider is set into action, oil flow is free from P to A. It can be used:

- to set the sequence of 2 actuators;
- as end strokes valve, where flow is directly connected to the tank.

MATERIALS AND FEATURES:

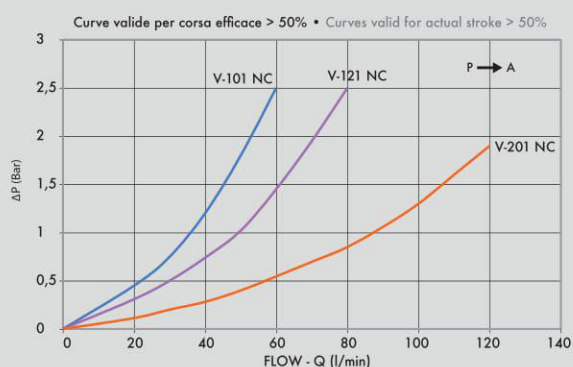
Body: zinc-plated steel
Internal parts: grounded and hardened steel
Seals: BUNA N standard
Ball type: any leakage
Maximum stroke: 13 mm
Prompt opening

APPLICATIONS:

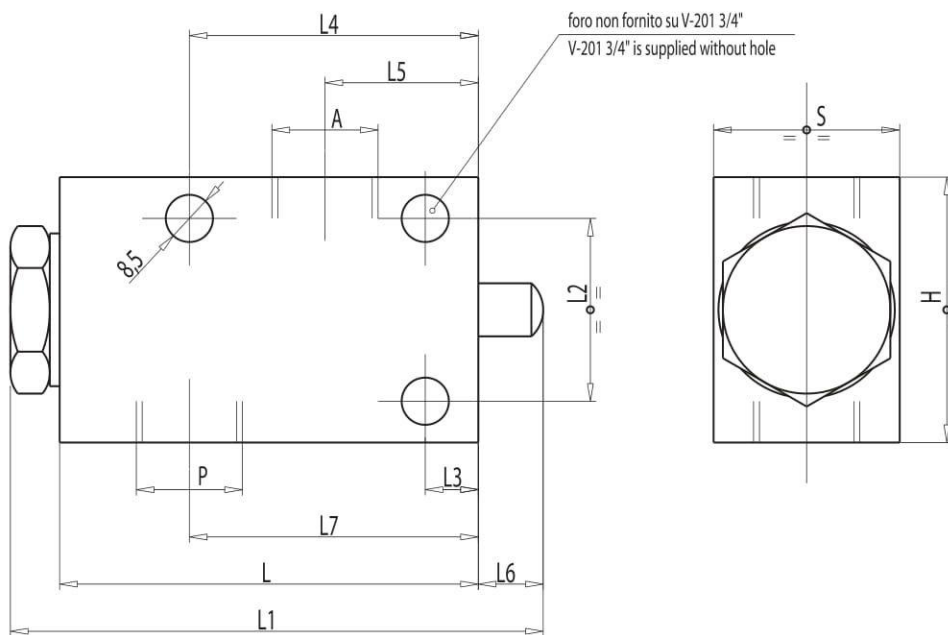
Connect A directly to the tank and P as for necessity. Mounting scheme can vary according to the use.

PERDITE DI CARICO PRESSURE DROPS CURVE

Temperatura olio: 50° C - Viscosità olio: 30 cSt
Oil temperature: 50° C - Oil viscosity: 30 cSt



CODICE CODE	SIGLA TYPE	PORTATA MAX MAX FLOW Lt. / min	PRESSIONE MAX MAX PRESSURE Bar
V0827	V - 101 3/8" NC	50	350
V0828	V - 121 1/2" NC	70	350
V0829	V - 201 3/4" NC	100	350

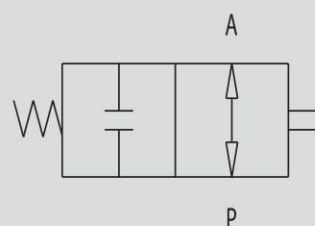


CODICE CODE	SIGLA TYPE	A-P GAS	L mm	L1 mm	L2 mm	L3 mm	L4 mm	L5 mm	L6 mm	L7 mm	H mm	S mm	PESO WEIGHT Kg.
V0827	V-101 3/8" NC	G 3/8"	80	105	35	10	55	30	14	55	50	35	0,962
V0828	V-121 1/2" NC	G 1/2"	80	105	35	10	55	28,5	14	55	50	35	0,934
V0829	V-201 3/4" NC	G 3/4"	88	115	50	20	68	23	14	61	70	45	0,860

FINECORSA A PULSANTE NORMALMENTE APERTO

TIPO / TYPE
VF-NA

SCHEMA IDRAULICO
HYDRAULIC DIAGRAM



PUSHBUTTON END STROKE VALVES, NORMALLY OPENED

IMPIEGO:

Valvola utilizzata per chiudere il passaggio di olio in un circuito idraulico (valvola normalmente aperta). La chiusura della valvola è ottenuta spingendo meccanicamente il cursore.

MATERIALI E CARATTERISTICHE:

Corpo: acciaio
Componenti interni: acciaio temprato termicamente e rettificato
Guarnizioni: BUNA N standard
Tenuta: trafilemento trascurabile
Corsa massima del cursore: 15 mm
Chiusura dopo 4 mm di corsa

MONTAGGIO:

Collegare A e P indifferentemente al distributore e al circuito. Quando il cursore è azionato il flusso è bloccato in entrambe le direzioni, viceversa il flusso è libero.

USE AND OPERATION:

This valve is used to block oil passage in a hydraulic circuit (normally opened valve). The valve closes by pushing mechanically the slider.

MATERIALS AND FEATURES:

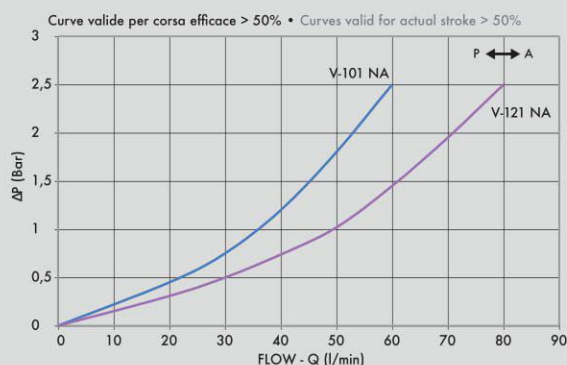
Body: zinc-plated steel
Internal parts: grounded and hardened steel
Seals: BUNA N standard
Ball type: minor leakage
Maximum stroke: 15 mm
Closing after 4 mm stroke

APPLICATIONS:

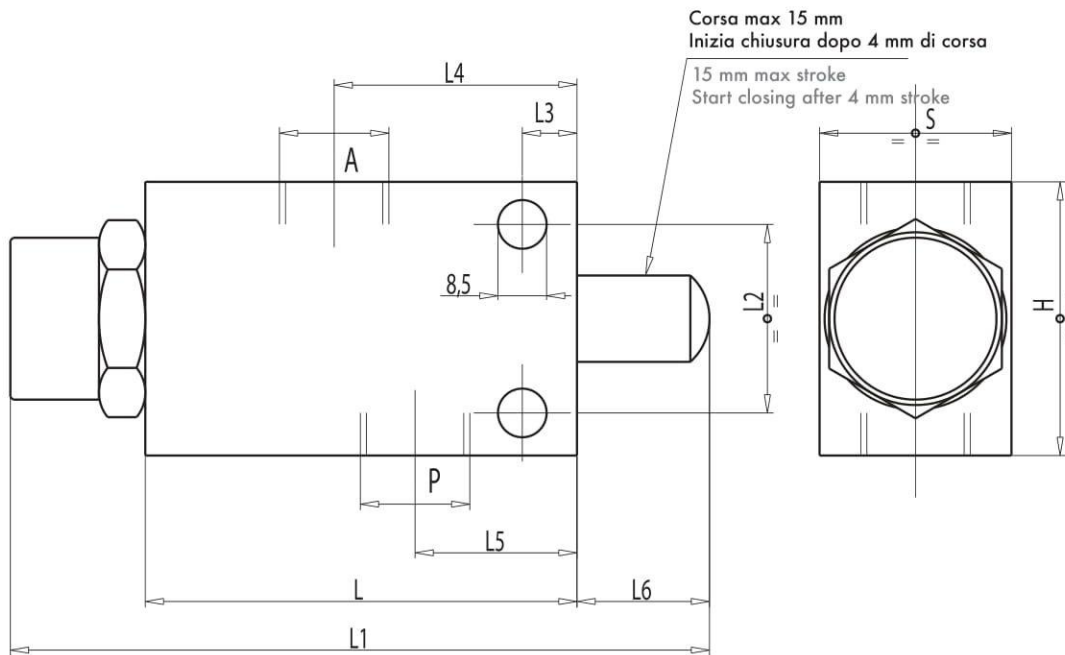
Connect independently A or P to the distributor and to the circuit. When slider is operating flow is blocked in both direction, vice versa it is free.

PERDITE DI CARICO PRESSURE DROPS CURVE

Temperatura olio: 50° C - Viscosità olio: 30 cSt
Oil temperature: 50° C - Oil viscosity: 30 cSt



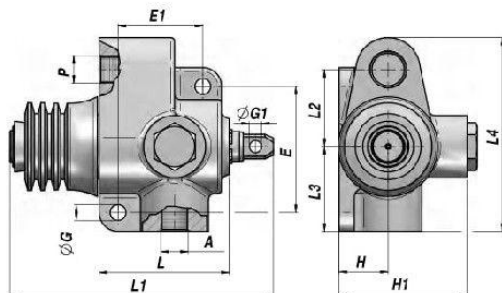
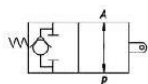
CODICE CODE	SIGLA TYPE	PORTATA MAX MAX FLOW Lt. / min	PRESSIONE MAX MAX PRESSURE Bar
V0817	V - 101 3/8" NA	45	350
V0818	V - 121 1/2" NA	60	350



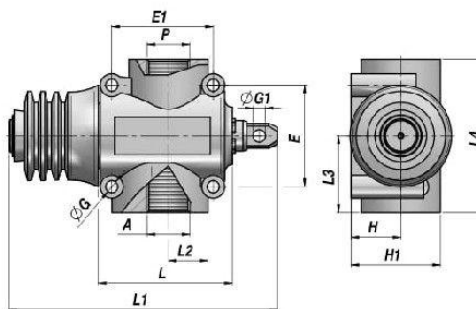
CODICE CODE	SIGLA TYPE	A-P GAS	L mm	L1 mm	L2 mm	L3 mm	L4 mm	L5 mm	L6 mm	H mm	S mm	PESO WEIGHT Kg.
V0817	V-101 3/8" NA	G 3/8"	80	129	35	8	45	30	24	56	35	1,240
V0818	V-121 1/2" NA	G 1/2"	80	129	35	8	45	30	24	62	35	1,380

VALVE FIN DE COURSE - NORMALEMENT OUVERTE
END-STROKE VALVE - NORMALLY OPEN

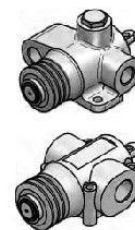
FCR-1T NA



FCR-1T 3/8" - 1/2"



FCR-1T 3/4"



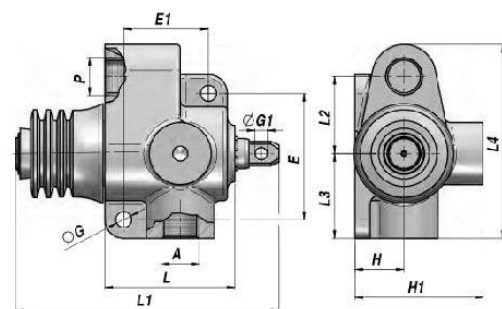
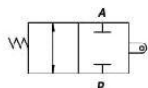
Code Code	A - P BSP	Q MAX l/min	P MAX bar	Type Type	L	L1	L2	L3	L4	ØG	ØG1	E	E1	H	H1	kg
V7090.0824	3/8"	60	350	FCR-1T 60-NA 38	69	130	41.0	45	103	8.5	6.5	66	45	26.0	68	1,63
V7090.0826	1/2"	80	350	FCR-1T 80-NA 12	69	130	41.0	45	103	8.5	6.5	66	45	26.0	68	1,62
V7090.1200	3/4"	120	350	FCR-1T120-NA 34	88	173	23.5	46	92	8.5	13.0	50	56	27.5	50	2,11

MATERIEL CORPS : FONTE
BODY MATERIAL : CAST IRON

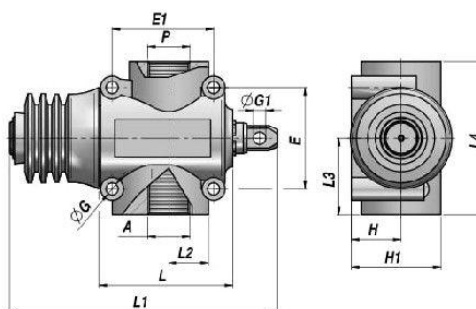
MONTAGE EN LIGNE
LINE MOUNTING

VALVE FIN DE COURSE - NORMALEMENT FERMEE
END-STROKE VALVE - NORMALLY CLOSED

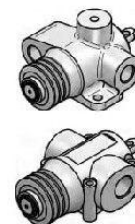
FCR-2T NC



FCR-2T 3/8" - 1/2"



FCR-2T 3/4"



Code Code	A - P BSP	Q MAX l/min	P MAX bar	Type Type	L	L1	L2	L3	L4	ØG	ØG1	E	E1	H	H1	kg
V7090.0820	3/8"	60	350	FCR-2T 60-NC 38	69	130	41.0	45	103	8.5	6.5	66	45	26.0	68	1,65
V7090.0822	1/2"	80	350	FCR-2T 80-NC 12	69	130	41.0	45	103	8.5	6.5	66	45	26.0	68	1,65
V7090.0823	3/4"	120	350	FCR-2T120-NC 34	88	179	23.5	46	92	8.5	13.0	50	56	27.5	50	2,20

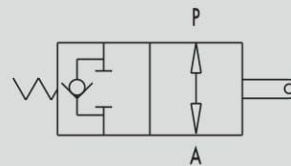
MATERIEL CORPS : FONTE
BODY MATERIAL : CAST IRON

MONTAGE EN LIGNE
LINE MOUNTING

FINECORSA IN TRAZIONE O SPINTA NORMALMENTE APERTO

TIPO / TYPE
V-FCR 1T

SCHEMA IDRAULICO
HYDRAULIC DIAGRAM



END STROKE VALVES, NORMALLY OPENED

IMPIEGO:

Valvola utilizzata per bloccare l'immissione di olio in un circuito idraulico o per fermare la corsa di un attuatore (valvola normalmente aperta). La chiusura della valvola, ottenuta azionando il cursore in trazione o spinta, permette un arresto immediato e totale del flusso di olio.

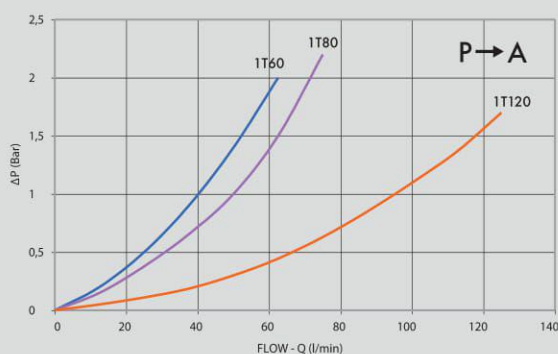
MATERIALI E CARATTERISTICHE:

Corpo: ghisa
Componenti interni: acciaio temprato termicamente e rettificato
Guarnizioni: BUNA N standard
Tenuta: trafilemento trascurabile

MONTAGGIO:

Collegare P al distributore e A al circuito o all'attuatore. Con il cursore azionato il flusso è bloccato da P ad A mentre, nella direzione opposta, la valvola di ritegno permette il libero passaggio dell'olio da A a P.

PERDITE DI CARICO PRESSURE DROPS CURVE



USE AND OPERATION:

This valve is used to stop oil inlet in a hydraulic circuit or to stop actuator's stroke (normally opened valve). The valve closing, obtained by pulling or pushing the slider, allows an immediate and total stop of the oil flow.

MATERIALS AND FEATURES:

Body: cast iron
Internal parts: grounded and hardened steel
Seals: BUNA N standard
Tightness: minor leakage

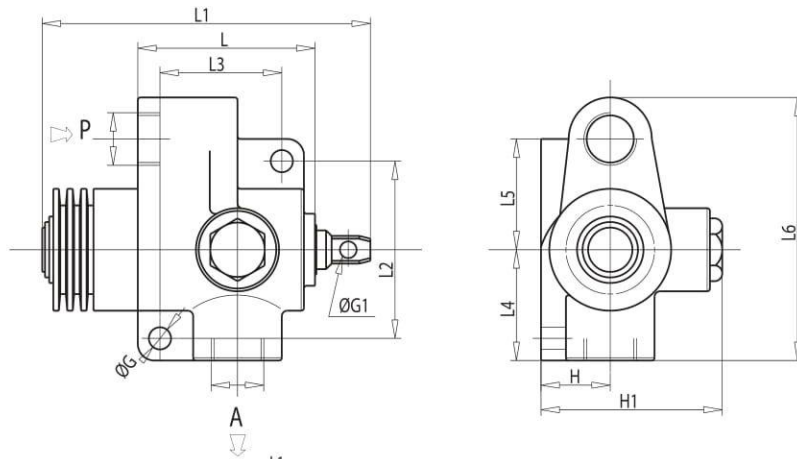
APPLICATIONS:

Connect P to the distributor and A to the circuit or to the actuator. When slider is operating, flow is blocked from P towards A, whilst the check valve enables free oil flow in the reverse direction (from A towards P).

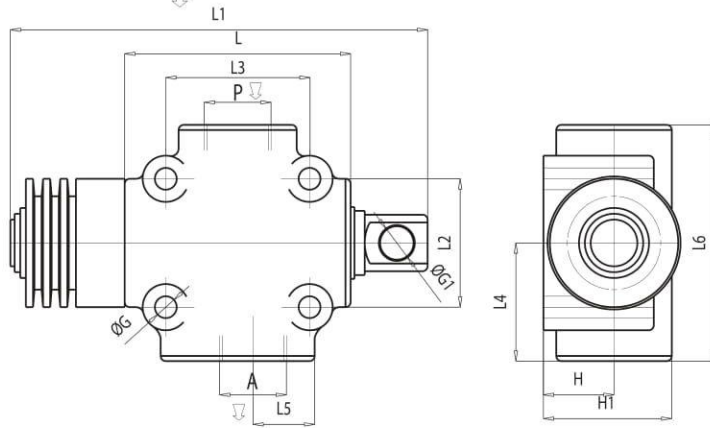
Temperatura olio: 50°C - Viscosità olio: 30 cSt
Oil temperature: 50° C - Oil viscosity: 30 cSt

CODICE CODE	SIGLA TYPE	PORTATA MAX MAX FLOW Lt. / min	PRESSIONE MAX MAX PRESSURE Bar	INIZIO CHIUSURA START CLOSING mm	FORZA POWER Kg (±10%)	CORSA MAX MAX STROKE mm	FORZA POWER Kg (±10%)
V0824	V-FCR 1T 60	60	350	7	6,5	20,5	18
V0826	V-FCR 1T 80	80	350	7	6,5	20,5	18
V0825	V-FCR 1T 120	120	350	9	33	15,5	50

V-FCR 1T 60-80



V-FCR 1T 120

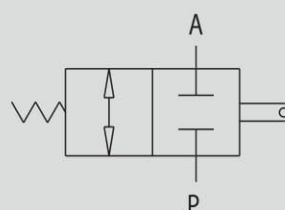


CODICE CODE	SIGLA TYPE	A-P GAS	L mm	L1 mm	L2 mm	L3 mm	L4 mm	L5 mm	L6 mm	ØG mm	ØG1 mm	H mm	H1 mm	PESO WEIGHT Kg.
V0824	V-FCR 1T 60	G 3/8"	69	130	66	45	45	41	103	8,5	6,5	26	68	1,628
V0826	V-FCR 1T 80	G 1/2"	69	130	66	45	45	41	103	8,5	6,5	26	68	1,616
V0825	V-FCR 1T 120	G 3/4"	88	173	50	56	46	23,5	92	8,5	13	27,5	50	2,112

FINECORSA IN TRAZIONE O SPINTA NORMALMENTE CHIUSO

TIPO / TYPE
V-FCR 2T

SCHEMA IDRAULICO
HYDRAULIC DIAGRAM



END STROKE VALVES, NORMALLY CLOSED

IMPIEGO:

Valvola utilizzata per aprire il passaggio di olio in un circuito idraulico (valvola normalmente chiusa). L'apertura della valvola è ottenuta azionando il cursore in trazione o spinta.

MATERIALI E CARATTERISTICHE:

Corpo: ghisa
Componenti interni: acciaio temprato termicamente e rettificato
Guarnizioni: BUNA N standard
Tenuta: trafileamento trascurabile

MONTAGGIO:

Collegare A e P indifferentemente al distributore e al circuito. Quando il cursore è azionato il flusso è libero in entrambe le direzioni, viceversa il flusso è bloccato.

USE AND OPERATION:

This valve is used to enable oil inlet in a hydraulic circuit (normally closed valve). The valve opens by pulling or pushing the slider.

MATERIALS AND FEATURES:

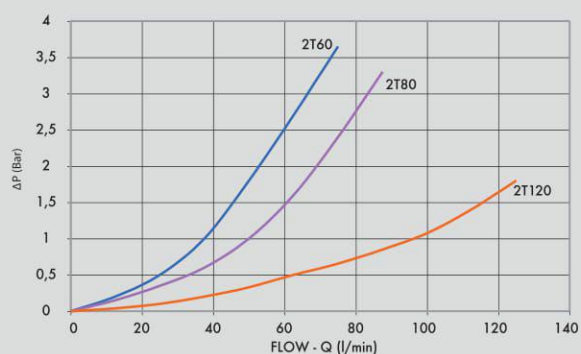
Body: cast iron
Internal parts: grounded and hardened steel
Seals: BUNA N standard
Tightness: minor leakage

APPLICATIONS:

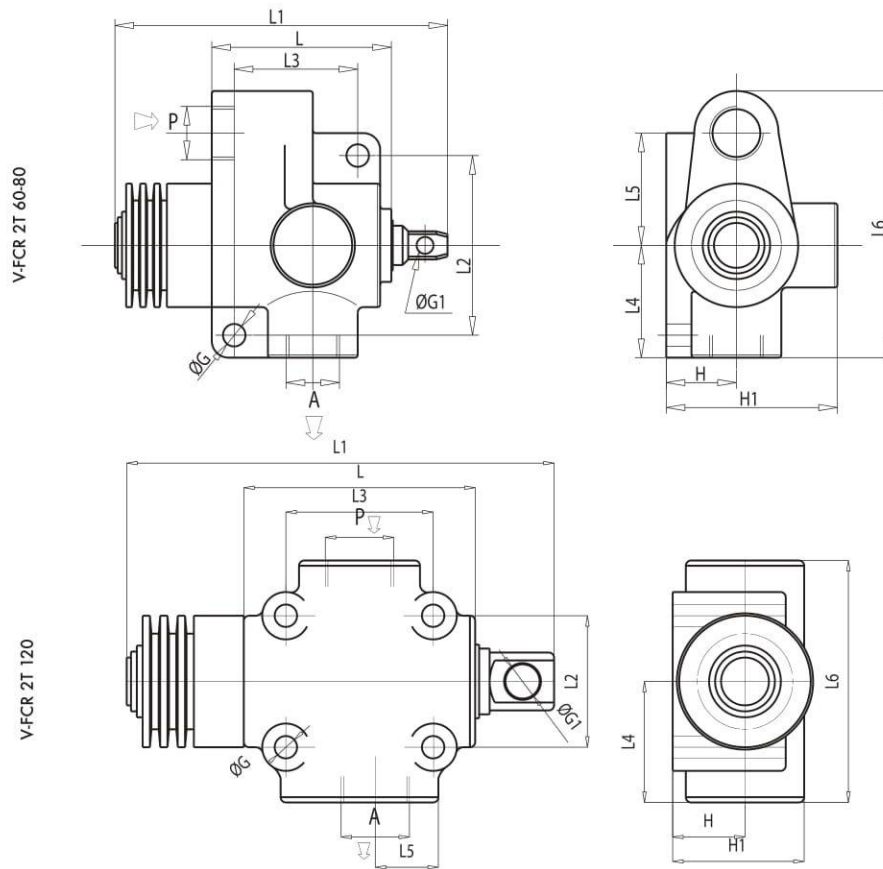
Connect independently A and P to the distributor and to the circuit. When slider is operating, flow is free in both directions, vice versa it is blocked.

PERDITE DI CARICO PRESSURE DROPS CURVE

Temperatura olio: 50°C - Viscosità olio: 30 cSt
Oil temperature: 50° C - Oil viscosity: 30 cSt



CODICE CODE	SIGLA TYPE	PORTATA MAX MAX FLOW Lt. / min	PRESSIONE MAX MAX PRESSURE Bar	INIZIO CHIUSURA START CLOSING mm	FORZA POWER Kg (±10%)	CORSA MAX MAX STROKE mm	FORZA POWER Kg (±10%)
V0820	V-FCR 2T 60	60	350	7	6,5	20,5	18
V0822	V-FCR 2T 80	80	350	7	6,5	20,5	18
V0823	V-FCR 2T 120	120	350	9	33	15,5	50



CODICE CODE	SIGLA TYPE	A-P GAS	L mm	L1 mm	L2 mm	L3 mm	L4 mm	L5 mm	L6 mm	ØG mm	ØG1 mm	H mm	H1 mm	PESO WEIGHT Kg.
V0820	V-FCR 2T 60	G 3/8"	69	130	66	45	45	41	103	8,5	6,5	26	68	1,648
V0822	V-FCR 2T 80	G 1/2"	69	130	66	45	45	41	103	8,5	6,5	26	68	1,652
V0823	V-FCR 2T 120	G 3/4"	88	179	50	56	46	23,5	92	8,5	13	27,5	50	2,204