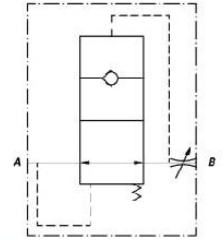
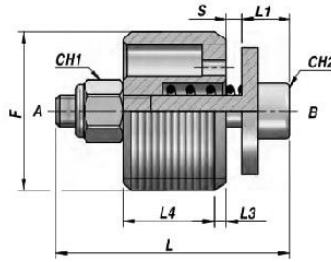


VUBA

VALVE PARACHUTE
HOSE BURST VALVE



Code Code	F BSP	Q MAX l/min	P MAX bar	S	Q STD l/min	Type Type	L	L1	L3	L4	CH1	CH2	kg x 100
VCG390.100800	1/4"	29	350	0.8	15.5	VUBA 010 - 0.8	19	5.0	1.0	7.0	5.5	2.5	1.00
VCG390.201500	3/8"	45	350	1.5	35.5	VUBA 020 - 1.5	23	5.0	1.5	9.5	5.5	2.5	1.50
VCG390.301800	1/2"	67	350	1.9	60.0	VUBA 030 - 1.9	29	6.0	1.5	11.5	7.0	3.0	2.50
VCG390.402200	3/4"	169	350	2.2	149.0	VUBA 040 - 2.2	34	6.0	2.5	15.5	7.0	3.0	4.50
VCG390.502600	1"	223	350	2.6	190.0	VUBA 050 - 2.6	40	8.5	1.5	18.5	8.0	4.0	9.80

S = OVERTURE STANDARD - STANDARD OPENING

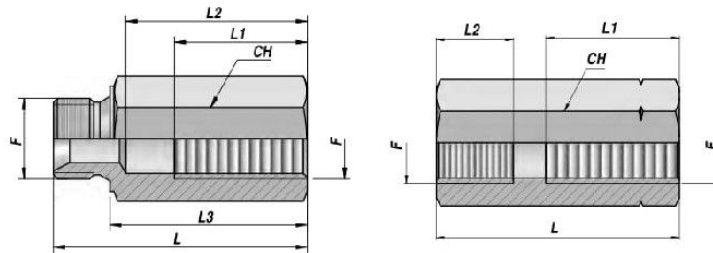
SURFACES CORPS TRAITÉES - LAPPED TIGHT SURFACES

MATERIEL CORPS : ACIER
BODY MATERIAL : STEEL

CARTOUCHE
CARTRIDGE

CMF x VUBA CFF x VUBA

RACCORD POUR VALVE "VUBA"
"VUBA" VALVE ADAPTER


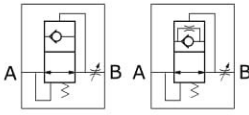


TYPE CMF

TYPE CFF

Code Code	F BSP	P MAX bar	Type Type	L	L1	L2	L3	CH	kg x 100
MALE-FEMELLE / MALE-FEMALE									
VCG391.100000	1/4"	350	CMFxVUBA-010	50	23	31	38	19	7.00
VCG391.200000	3/8"	350	CMFxVUBA-020	60	30	43	48	22	9.50
VCG391.300000	1/2"	350	CMFxVUBA-030	63	33	45	49	27	14.70
VCG391.400000	3/4"	300	CMFxVUBA-040	75	36	50	59	32	22.50
VCG391.500000	1"	250	CMFxVUBA-050	88	46	60	70	41	42.50
FEMELLE-FEMELLE / FEMALE-FEMALE									
VCG392.100000	1/4"	350	CFFxVUBA-010	50	20	12	-	19	7.00
VCG392.200000	3/8"	350	CFFxVUBA-020	58	27	14	-	22	9.80
VCG392.300000	1/2"	350	CFFxVUBA-030	60	33	19	-	27	14.50
VCG392.400000	3/4"	300	CFFxVUBA-040	76	36	19	-	32	22.20
VCG392.500000	1"	250	CFFxVUBA-050	85	46	18	-	41	43.50

MATERIEL : ACIER
MATERIAL : STEEL

SCHEDA - CARD	PRODOTTO - PRODUCT	SCHEMA - SCHEMA	VUBA
G70/0		 <p style="font-size: small;">Con foro sul piattello With hole on the disk</p>	VALVOLA UNIDIREZIONALE DI BLOCCO AUTOMATICO HOSE BURST VALVE

APPLICAZIONE

La valvola viene impiegata per bloccare automaticamente l'improvviso aumento di portata di una utenza idraulica.

MONTAGGIO

Inserire la valvola nell'apposita cavità facendo attenzione che A sia collegato alla linea di ritorno e B all'attuatore.

FUNZIONAMENTO

Il flusso passa libero da A verso B e viceversa in normali condizioni di lavoro. In caso di aumento improvviso della portata da B verso A il piattello della valvola si sposta bloccando completamente il passaggio. In caso di piattello con foro calibrato, il flusso dopo un primo arresto, defluisce lentamente. Per aumentare la portata da controllare, aumentare lo spessore di apertura S o, viceversa, per ridurla.

A RICHIESTA

Filetti metrici - Collettore MF o FF (vedere Scheda Z10/0) - RegISTRAZIONI personalizzate
Chiave speciale per il montaggio - Foro calibrato

NOTE COSTRUTTIVE

Corpo in acciaio zincato - Trafilamento ridotto.

APPLICATION

The valve is used to automatically stop a sudden flow increase.

INSTALLATION

Fit the valve in the suitable cavity making sure that A port is connected to the return line and B port to the actuator.

OPERATION

The flow is free in both directions under normal working conditions. In case of a sudden increase in flow from B to A, the valve immediately stops the flow. A little calibrated orifice can be made on the disk so that after the valve has closed, the orifice will determine the descent flow. To set the flow to be controlled increase or decrease the S dimension.

OPTIONAL

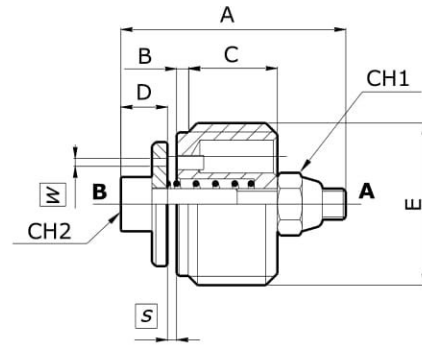
Metric threads - Male/Female or Female/Female body (see Z10/0 card) - Special adjustment on request - Special tool for mounting - Calibrated Hole

FEATURES

Zinc plated steel body - Low leakage.

CARATTERISTICHE - HYDRAULIC FEATURES

Dimensione Dimension	01	015	02	02SAE	03	04	05
Pressione max Max pressure (bar)	350	350	350	350	350	350	350
Portata max Max Flow (l/min)	29	29	45	45	67	169	223
Portata std Std Flow rate (l/min)	18.5	22.6	35.5	34.5	60	149	190
Apertura A std Std setting S	1	1	1.5	1.5	1.8	2.2	2.6



Nota:

Il valore di registrazione S deve corrispondere 1.5-2 volte il valore della portata massima di discesa.
W = foro calibrato a richiesta

Note:

the setting of "S" is recommended to be 1.5-2 times the maximum descent flow.
W = optional calibration hole

DIMENSIONI E PESI - EXTERNAL DIMENSIONS AND WEIGHTS

Dimensione Dimension	A	B	C	D	E gas	E sae	CH1	CH2	Peso Weight (kg)
01	19	1	7	5	1/4	-	5.5	2.5	0.010
015	19	1	7	5	-	9/16-18	5.5	2.5	0.010
02	23	1.5	9.5	5	3/8	3/4-16	5.5	2.5	0.015
03	29	1.5	11.5	6	1/2	7/8-14	7	3	0.025
04	34	2.5	15.5	6	3/4	1 1/16-12	7	3	0.045
05	40	1.5	18.5	8.5	1	1 5/16-12	8	4	0.098

CODICE ORDINAZIONE - ORDERING CODE

VUBA	Dimensione - Dimension	Collettore Line Fittings	Tipo Type	Tipo Filetto Port type																												
	<table border="1"> <thead> <tr> <th>Tipo-Type</th> <th>GAS</th> <th>SAE</th> </tr> </thead> <tbody> <tr> <td>01</td> <td>1/4</td> <td>-</td> </tr> <tr> <td>015</td> <td>-</td> <td>9/16-18</td> </tr> <tr> <td>02</td> <td>3/8</td> <td>3/4-16</td> </tr> <tr> <td>03</td> <td>1/2</td> <td>7/8-14</td> </tr> <tr> <td>04</td> <td>3/4</td> <td>1 1/16-12</td> </tr> <tr> <td>05</td> <td>1</td> <td>1 5/16-12</td> </tr> </tbody> </table>	Tipo-Type	GAS	SAE	01	1/4	-	015	-	9/16-18	02	3/8	3/4-16	03	1/2	7/8-14	04	3/4	1 1/16-12	05	1	1 5/16-12	<table border="1"> <tbody> <tr> <td>Solo valvola Cartridge only</td> </tr> <tr> <td>MF Maschio-Femmina Male-Female</td> </tr> <tr> <td>FF Femmina-Femmina Female-Female</td> </tr> </tbody> </table>	Solo valvola Cartridge only	MF Maschio-Femmina Male-Female	FF Femmina-Femmina Female-Female	<table border="1"> <tbody> <tr> <td>Senza foro Without Hole</td> </tr> <tr> <td>C/F Foro calibrato / with hole W = specificare / specify</td> </tr> </tbody> </table>	Senza foro Without Hole	C/F Foro calibrato / with hole W = specificare / specify	<table border="1"> <tbody> <tr> <td>GAS</td> </tr> <tr> <td>S SAE</td> </tr> </tbody> </table>	GAS	S SAE
Tipo-Type	GAS	SAE																														
01	1/4	-																														
015	-	9/16-18																														
02	3/8	3/4-16																														
03	1/2	7/8-14																														
04	3/4	1 1/16-12																														
05	1	1 5/16-12																														
Solo valvola Cartridge only																																
MF Maschio-Femmina Male-Female																																
FF Femmina-Femmina Female-Female																																
Senza foro Without Hole																																
C/F Foro calibrato / with hole W = specificare / specify																																
GAS																																
S SAE																																

ESEMPIO ORDINAZIONE - ORDERING CODE EXAMPLE

VUBA 015 S	VUBA - Dimensione 015 - Tipo Filetto 9/16-18 SAE - Senza valvola - Senza foro / VUBA - 015 Dimension - 9/16-12 SAE Port thread - Cartridge only - Without hole
VUBA 02 CF(0.8)	VUBA - Dimensione 02 con foro 0.8 mm - Tipo filetto 3/8 GAS - Senza valvola / VUBA - 015 Dimension with hole mm 0.8 - 3/8 GAS Port thread - Cartridge only

Z10/0	PRODOTTO - PRODUCT 	CMF-CFF VALVOCOLLETTORI PER VALVOLE SERIE VUBA-VSC-VRD LINE FITTINGS FOR VUBA-VSC-VRD CARTRIDGE SERIES
--------------	--	---

APPLICAZIONE

Sono speciali collettori che permettono il montaggio in linea delle valvole serie VUBA, VSC e VRD evitando la realizzazione di costose cavità.

OPZIONI DISPONIBILI:

Maschio/Femmina; Femmina/Femmina

MONTAGGIO

Inserire le valvole all'interno della sede filettata prestando attenzione al senso di funzionamento

A RICHIESTA

Zincatura nera - Misure speciali - Marcatura personalizzabile.

NOTE COSTRUTTIVE

Acciaio zincato - Parte maschio con centraggio per rondella.

APPLICATION

They are special line bodies inside which VUBA - VSC - VRD cartridges can be fitted, thus avoiding expensive solutions (special cavities).

OPTIONS AVAILABLE:

male / female or female / female types.

INSTALLATION

Fit the cartridges into their line bodies, checking the correct direction.

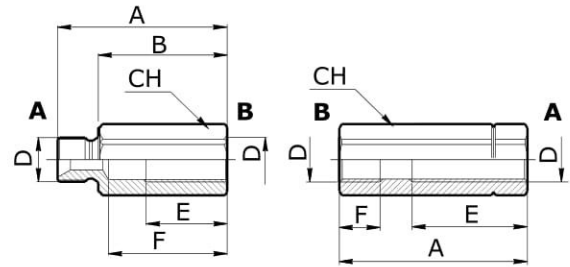
OPTIONAL

Black zinc-plating - Special dimensions - Custom marking.

FEATURES

Zinc-plated steel - Male end is arranged for washer centering.

CARATTERISTICHE - HYDRAULIC FEATURES					
Dimensione Dimension	01	02	03	04	05
Pressione max Max Pressure (bar)	350	350	350	300	250



DIMENSIONI E PESI - EXTERNAL DIMENSIONS AND WEIGHTS									
Tipo Type	Dimensione Dimension	A	B	D gas	D sae	E	F	CH	Peso Weight (kg)
CMFVUBA	01	50	38	1/4	-	23	31	19	0.070
	02	60	48	3/8	3/4-16	30	43	22	0.095
	03	63	49	1/2	7/8-14	33	45	27	0.147
	04	75	59	3/4	1 1/16-12	36	50	32	0.225
	05	88	70	1	1 5/16-12	46	60	41	0.425
CFFVUBA	01	50	-	1/4	-	20	12	19	0.070
	02	58	-	3/8	3/4-16	27	14	22	0.098
	03	60	-	1/2	7/8-14	33	19	27	0.145
	04	76	-	3/4	1 1/16-12	36	19	32	0.222
	05	85	-	1	1 5/16-12	46	18	41	0.435
CMFVRD	01	76	66	1/4	-	41	61	19	-
	02	82	70	3/8	3/4-16	41	63	22	0.110
	03	100	86	1/2	7/8-14	45	79	27	0.165
	04	112	96	3/4	1 1/16-12	55	86	32	0.250
CFFVRD	01	66	-	1/4	-	34	12	19	0.080
	02	70	-	3/8	3/4-16	37	14	22	0.110
	03	80	-	1/2	7/8-14	41	16	27	0.165
	04	100	-	3/4	1 1/16-12	54	19	32	0.250
CMFVSC	01	62	50	1/4	-	42	45	19	0.070
	02	82	70	3/8	3/4-16	41	63	22	0.095
	03	100	86	1/2	7/8-14	45	79	27	0.147
CFFVSC	01*	50	-	1/4	-	21	12	19	0.080
	02	70	-	3/8	3/4-16	37	14	22	0.110
	03	80	-	1/2	7/8-14	50	16	27	0.165

* = montaggio valvola invertito - Valve to be inserted in the reverse direction

CODICE ORDINAZIONE - ORDERING CODE

C				
	Tipo - Type	Tipo di Valvola Cartridge valve	Dimensione - Dimension	Tipo Filetto Port type
	MF Maschio - Femmina Male - Female	VUBA	Tipo-Type GAS SAE	S GAS
	FF Femmina - Femmina Female - Female	VSC	01 1/4 -	
		VRD	02 3/8 3/4-16	
			03 1/2 7/8-14	
			04 3/4 1 1/16-12	
			05 1 1 5/16-12	

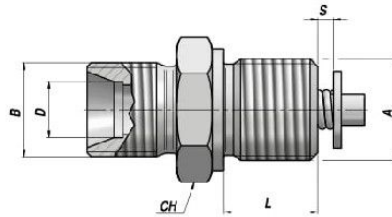
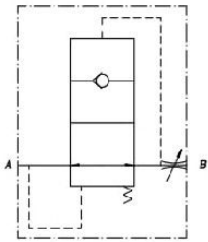
ESEMPIO ORDINAZIONE - ORDERING CODE EXAMPLE

C MF VUBA 2 C - Tipo Maschio Femmina - Valvola VUBA - Dimensione 02 - Filetto 3/8 GAS / C - Male-female Type - VUBA Valve - 02 Dimension - 3/8 GAS Port thread

VALVE PARACHUTE - DIN 2353
HOSE BURST VALVE - DIN 2353

NEW!

VUBA DIN



Code Code	A BSP	B	Q MAX l/min	P MAX bar	S	Q STD l/min	Type Type	L	D	CH	kg x 100
V1690.0784	3/8"	M16x1.5	50	350	1.2	32	VUBA-DIN 3/8" T10L	11	10	22	6,00
V1690.0786	3/8"	M18x1.5	50	350	1.2	32	VUBA-DIN 3/8" T12L	11	12	22	6,50
V1690.0787	3/8"	M22x1.5	50	350	1.2	32	VUBA-DIN 3/8" T15L	11	15	24	9,70
V1690.0794	1/2"	M22x1.5	80	350	1.6	54	VUBA-DIN 1/2" T15L	13	15	27	11,50

S = OVERTURE STANDARD - STANDARD OPENING

MATERIEL CORPS : ACIER
BODY MATERIAL : STEEL

CARTOUCHE
CARTRIDGE