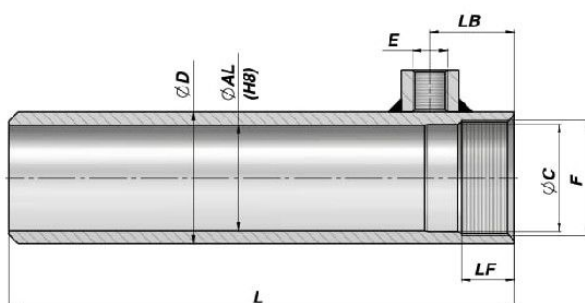


STS

TUBE USINE AVEC BOSSAGE SOUDE
TURNED CYLINDER TUBE WITH WELDED THREADED PORT



Series M250

Code Code	ØAL	Course Stroke	L	ØD	E BSP	LB	F	LF	ØC	kg
STS5700200	80	200	335	95	1/2"	50	M85x2	34	80,6	5,44
STS5700250		250	385							6,25
STS5700300		300	435							7,05
STS5700400		400	535							8,66
STS5700500		500	635							10,27
STS5700600		600	735							11,87
STS5700800		800	935							15,09
STS5701000		1000	1135							18,31
STS6700200	100	200	360	115	1/2"	70	M105x2	52	100,6	7,17
STS6700250		250	410							8,16
STS6700300		300	460							9,14
STS6700400		400	560							11,12
STS6700500		500	660							13,09
STS6700600		600	760							15,07
STS6700800		800	960							19,02
STS6701000		1000	1160							22,97

MATERIEL TUBE : ACIER St 52.3 DIN 2391 ISO H8

TUBE MATERIAL : STEEL St 52.3 DIN 2391 ISO H8