

Monoblock valve BM45

SINGLE LEVER VALVE

BM45



Caratteristiche generali / Technical characteristics

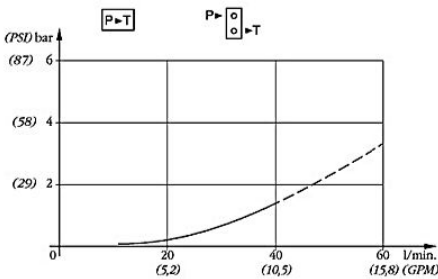
	l/min	GPM
• Portata nominale / Nominal flow	40	10,5
• Portata limite / Max flow	50	13
• Portata limite EO / Max flow EO	35	9
	bar	PSI
• Pressione nominale / Nominal pressure	250	3600
• Pressione nominale EO / Nominal pressure EO	180	2600
• Contropressione max allo scarico / Max pressure in tank-line	80	1100

MOD	L	I	Kg
BM45			2,2

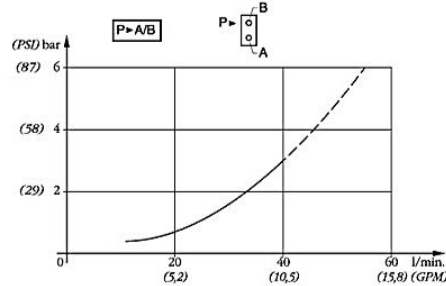
FILETTATURA STANDARD - STANDARD THREADS

COD	A-B	P ₂	T ₂
G	1/2"	1/2"	1/2"
F	7/8" - 14	7/8" - 14	7/8" - 14

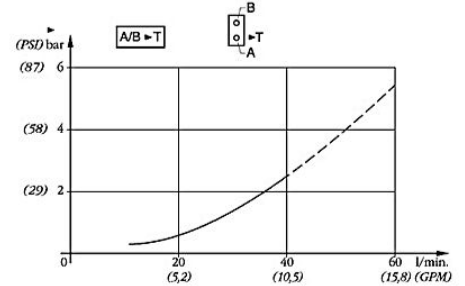
P>T TEMPERATURA OLIO 50°C - VISCOSITÀ 3,5°E



P>A/B TEMPERATURA OLIO 50°C - VISCOSITÀ 3,5°E

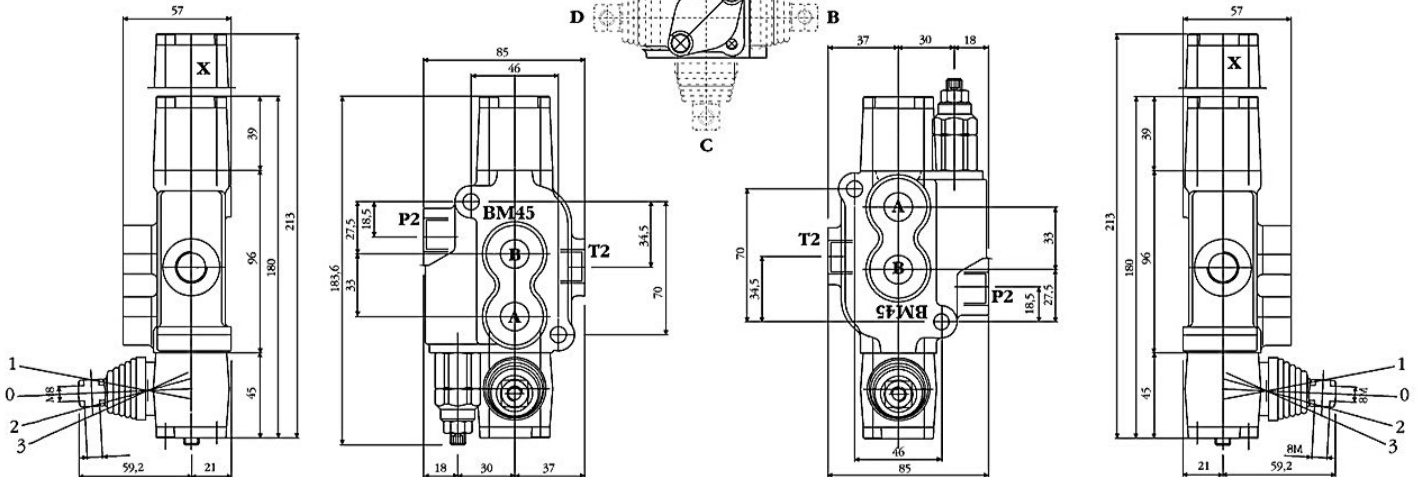


A/B>T TEMPERATURA OLIO 50°C - VISCOSITÀ 3,5°E



BM45/L = ENTRATA SINISTRA (A - B - C)
LEFT INLET (A - B - C)

BM45/R = ENTRATA DESTRA (A - B - C - D)
RIGHT INLET (A - B - C - D)



X = POSIZIONATORE - SPOOL CONTROL 2-3-12-14

X = POSIZIONATORE - SPOOL CONTROL 2-3-12-14

