

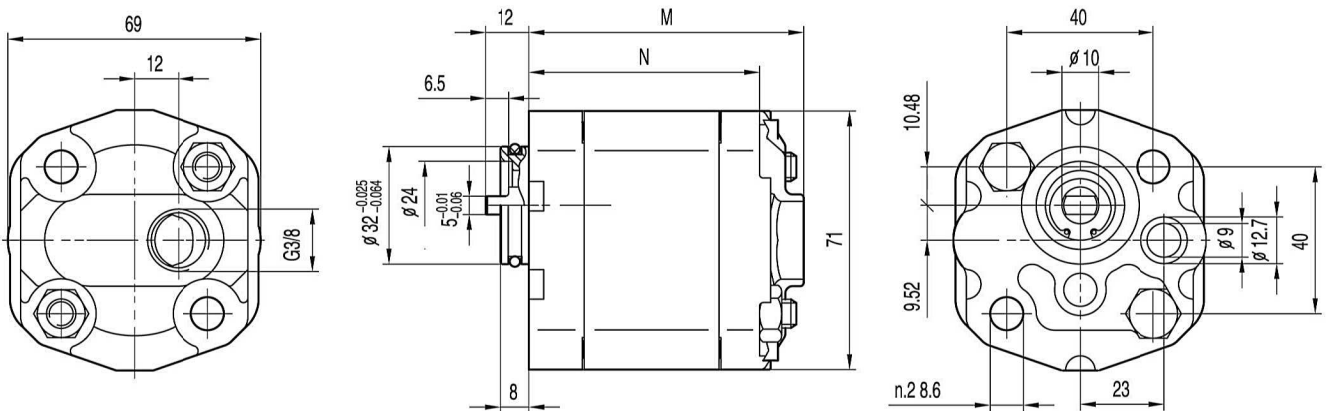
BKP1Q0



End cover: G3/8 thread depth 12.
To mount the pump, n.2 M8 screws, with a torque wrench setting fixed at 27 ± 3 Nm.

INLET

OUTLET

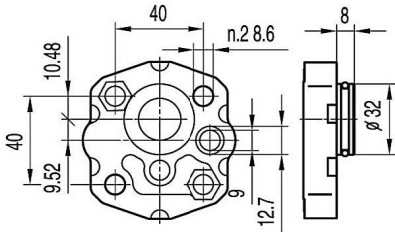


Type	Displacement (cm ³ /rev)	Max pressure			Max. speed (r/min)	Min. speed (r/min)	Dimensions	
		P1 bar	P2 bar	P3 bar			M mm	N mm
BKP1Q0-D-0.8	0.8	230	250	270	6000	1000	73.5	61.5
BKP1Q0-D-1.1	1.1	230	250	270	6000	1000	74	62
BKP1Q0-D-1.3	1.3	230	250	270	6000	1000	75	63
BKP1Q0-D-1.6	1.6	230	250	270	6000	1000	76	64
BKP1Q0-D-1.8	1.8	230	250	270	6000	1000	77	65
BKP1Q0-D-2.1	2.1	230	250	270	6000	1000	78	66
BKP1Q0-D-2.7	2.7	230	250	270	6000	800	80	68
BKP1Q0-D-3.2	3.2	210	230	250	5000	800	82	70
BKP1Q0-D-3.7	3.7	210	230	250	4500	800	84	72
BKP1Q0-D-4.2	4.2	210	230	250	4000	800	86	74
BKP1Q0-D-4.8	4.8	190	210	230	3500	600	88	76
BKP1Q0-D-5.8	5.8	190	210	230	3000	600	92	80
BKP1Q0-D-7.0	7.0	160	180	200	2500	600	96	84
BKP1Q0-D-8.0	8.0	160	180	200	2100	600	100	88

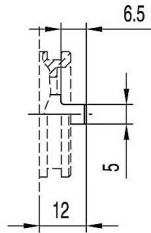
BKP1

FRONT COVER

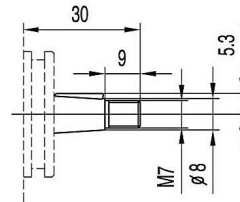
SHAFTS



Q0



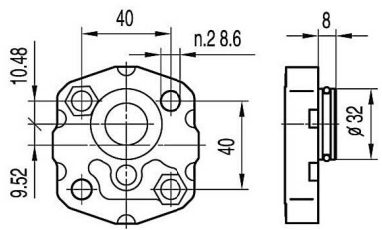
G0



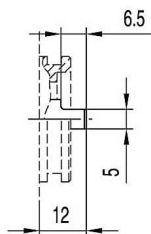
T0

Max.Torque 20 Nm

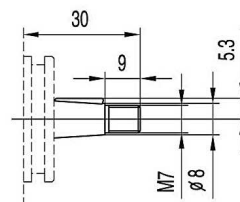
Max.Torque 25 Nm



Q1



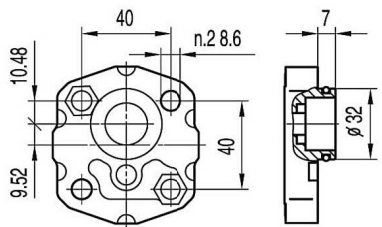
G0



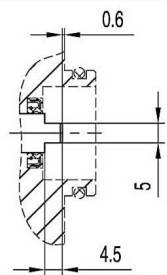
T0

Max.Torque 20 Nm

Max.Torque 25 Nm

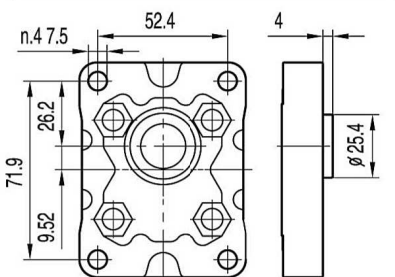


Q2

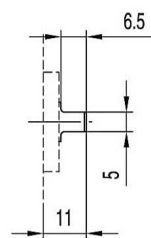


G1

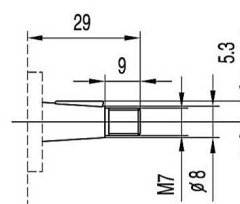
Max.Torque 20 Nm



B0



G0



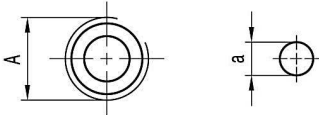
T0

Max.Torque 20 Nm

Max.Torque 25 Nm

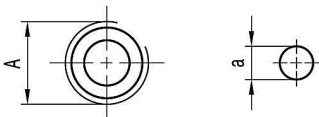
BKP1

PORTS



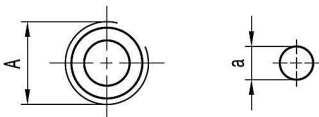
L0

TYPE	INLET	OUTLET
	A	a
BKP1...0.8 ÷ BKP1...8.0	G1/4	∅9



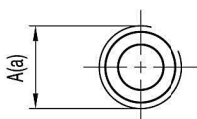
L1

TYPE	INLET	OUTLET
	A	a
BKP1...0.8 ÷ BKP1...8.0	G3/8	∅9



N0

TYPE	INLET	OUTLET
	A	a
BKP1...0.8 ÷ BKP1...8.0	3/8 NPT	∅9

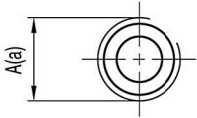


L2

TYPE	INLET	OUTLET
	A	a
BKP1...0.8 ÷ BKP1...8.0	G3/8	G1/4

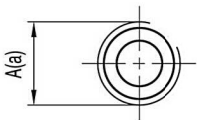
BKP1

PORTS



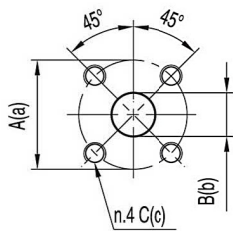
L3

TYPE	INLET	OUTLET
	A	a
BKP1...0.8 ÷ BKP1...8.0	G3/8	G3/8



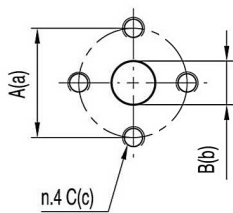
Z0

TYPE	INLET	OUTLET
	A	a
BKP1...0.8 ÷ BKP1...8.0	M18x1.5	M14x1.5



F0

TYPE	INLET			OUTLET		
	A	B	C	a	b	c
BKP1...0.8 ÷ BKP1...8.0	30	12	M6	30	12	M6



E0

TYPE	INLET			OUTLET		
	A	B	C	a	b	c
BKP1...0.8 ÷ BKP1...8.0	30	12	M6	30	12	M6